

(First publication Aug. 23.)  
**NOTICE OF FINAL SETTLEMENT**  
 Estate No. 1419.  
 In the County Court of Holt County, Nebraska, August 18, 1923.  
 In the matter of the Estate of John Beller, Deceased.  
 All persons interested in said estate are hereby notified that the Administratrix of said estate has filed in said court her final report and a petition for final settlement and distribution

of the residue of said estate; and that said report and petition will be heard September 12, 1923, at 10 o'clock A. M. at the County Court Room in O'Neill, Nebraska, when all persons interested may appear and be heard concerning said final report and the distribution of said estate.  
 (County Court Seal)  
 12-3  
 C. J. MALONE,  
 County Judge.  
 The Frontier, only \$2.00 per year.

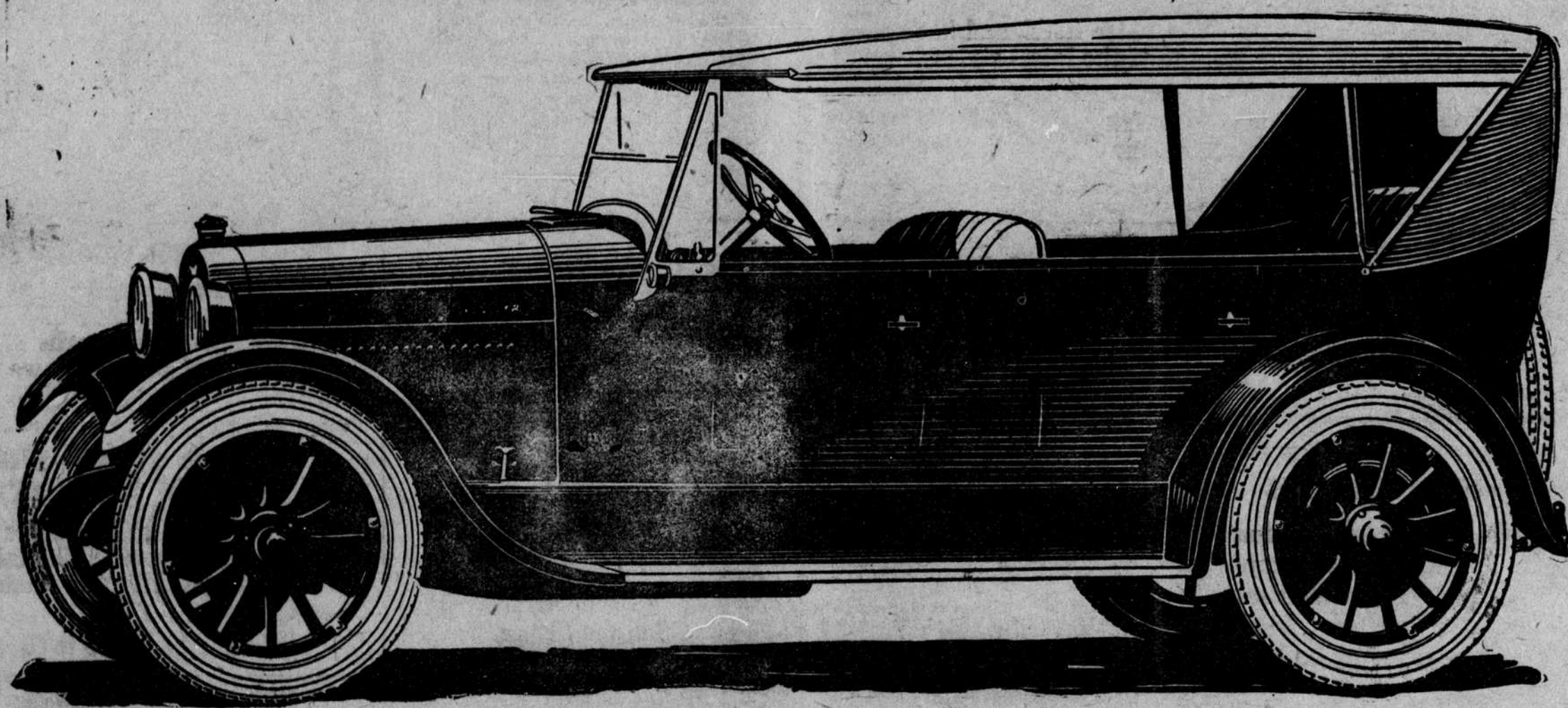
(First publication Aug. 23.)  
**NOTICE OF FINAL SETTLEMENT**  
 Estate No. 1498.  
 In the County Court of Holt County, Nebraska, August 21, 1923.  
 In the matter of the Estate of William Simpson, Deceased.  
 All persons interested in said estate are hereby notified that the Executor of said estate has filed in said court his final report and a petition for final settlement and distribution of the residue of said estate; and that said re-

port and petition will be heard September 12, 1923, at 10 o'clock A. M. at the County Court Room in O'Neill, Nebraska, when all persons interested may appear and be heard concerning said final report and the distribution of said estate.  
 (County Court Seal)  
 12-3  
 C. J. MALONE,  
 County Judge.  
 The Frontier, only \$2.00 per year.  
 The Frontier for Sale Bills.

(First publication Aug. 23.)  
**NOTICE TO CREDITORS.**  
 Estate No. 1613.  
 In the County Court of Holt County, Nebraska, August 22, 1923.  
 In the matter of the Estate of John B. Anderson, Deceased.  
 CREDITORS of said estate are hereby notified that the time limited for presenting claims against said estate is December 20, 1923, and for the payment of debts is August 22, 1924, and that on September 19, 1923, and

on December 20, 1923, at 10 o'clock A. M., each day, I will be at the County Court Room in said County to receive, examine, hear, allow, or adjust all claims and objections duly filed.  
 (County Court Seal.)  
 12-4  
 C. J. MALONE,  
 County Judge.  
 Subscribe for The Frontier and keep posted upon the affairs of this great court of ours.

# The New HIGH POWERED REO "SIXES"



The New 6-Cylinder Touring  
**\$1335** Add Tax  
 At Lansing

DEVELOPED by nineteen years' experience, the 1924 line of Reo high-powered six-cylinder passenger cars more forcefully expresses the significance of Reo as "The Gold Standard of Values."  
 The rugged, powerful chassis is hung lower to the road for easier riding, greater safety and improved appearance. The double-frame mounting of power units,—long a distinctive Reo feature,—is maintained. So is the simple dual foot control.  
 Super strength marks the new rear axle, which combines the advantages of both the semi-floating and full floating types.

Greatly improved and oversized brakes with 15-inch drums and 2½-inch faces provide positive control; a simple, sure and safe design of time-tried goodness is assurance of continued efficiency.  
 Powered with the wonderful Reo 6-cylinder engine; nothing experimental nor untried. With intake valves in head and exhaust valves at side, positive lubrication and cooling systems and unusual accessibility, it provides dependable power for every driving condition.  
 Safety—reliability—comfort—economy—roadability—appearance,—on whatever factor motor car satisfaction is based, Reo dominates.

The Gold Standard of Values

New Phaeton Reo \$1545 4 Pass. Coupe \$1875 5 Pass. Sedan \$1985 4 Door Brougham \$2235

All prices are f. o. b. Lansing, plus federal tax

Reo Motor Car Company, Lansing, Michigan

REO MOTOR CAR COMPANY Lansing ~ ~ ~ Michigan