

PROHIBITION Does Increase the Tax Burden

Absolute proof is at hand that prohibition has enormously increased the tax burden for the Kansas farmer and property owner. So great is the burden of taxation in prohibition Kansas that half the counties in that state find themselves in serious financial difficulties.

HERE IS THE PROOF:

(From the Topeka "State Journal" of Dec. 7, 1915)

"MUST RAISE LIMIT"

"One-Half of Kansas Counties in Financial Mire"
"Bond Issues, Economy or Legislative Relief Only Hope"

"Fifty per cent of the counties of Kansas will be forced to adopt sweeping economy measures or issue bonds to cover deficits in their general revenue funds, unless the next legislature raises the limit of the general revenue tax levy, according to men in touch with the financial condition of counties over the state."

The reason for the heavy tax burden under prohibition is not far to seek. Under prohibition, it becomes necessary to prosecute in court every year thousands of persons having alcoholic beverages in their possession. Each such case costs the county about \$50, according to the Topeka, Kan., "State Journal" of August 29, 1916. This paper also states in the same issue that in Topeka alone, there are 106 such cases docketed for the September term of court. This is the condition in one Kansas county, at one term of court alone.

Kansas spent \$701,944.40 in the last two years to maintain the inmates of her state prisons, while Nebraska spent less than half that sum.

WHO CARRIES THE TAX BURDEN?

It is interesting to observe how the prohibition politician always manages to unload the increased burden of taxation on the farmer and on the property owner. In Kansas the state tax levy for 1916 is equal to 6.5 mills on a one-fifth valuation, and in Nebraska it is only 6.1 mills on a one-fifth valuation.

In order to deceive the people and keep the state tax levy from mounting sky-high, the prohibition politicians in Kansas simply raised the assessed valuation of farm lands many millions of dollars this year.

HERE IS THE PROOF:

(From the Topeka "State Journal" of Oct. 5, 1916)

"Twice has he (Governor Capper, the prohibitionist) handed the FARMERS a package, by raising the valuations of their farm land, in order to raise more taxes, yet he permitted the railroads and corporations to go at the same old rate."

GOVERNOR CAPPER OF KANSAS HAS PUBLICLY ADMITTED THAT THE VALUATION OF KANSAS PROPERTY WAS BOOSTED \$79,000,000 IN 1915 FOR PURPOSES OF TAXATION. THIS IS TYPICAL OF THE PROHIBITION POLITICIAN EVERYWHERE. HE RIDES INTO OFFICE ON THAT ISSUE, AND THEN PROMPTLY PUTS THE BURDEN OF INCREASED TAXATION BROUGHT ABOUT BY PROHIBITION, ON THE FARMER AND ON THE PROPERTY OWNER.

The squares shown below will appear at the TOP of the ballot. An X marked in square 301 is a vote AGAINST PROHIBITION.

Yes		} Shall the above and foregoing amendment to the Constitution be adopted?
300	<input type="checkbox"/>	
No		
301	<input checked="" type="checkbox"/>	

The Nebraska Prosperity League

OPPOSED TO STATE PROHIBITION. IN FAVOR OF LOCAL OPTION, HIGH LICENSE
President, L. F. CROFOOT Treasurer, W. J. COAD Secretary, J. B. HAYNES
Send for our literature.

M

IN THE DAYS OF THE LONG AGO.

THIRTY YEARS AGO.

Taken from the files of The Frontier of Oct. 21, 1886:

The republican senatorial convention was held in this city last Saturday and A. N. Robbins of Valley county was nominated for state senator. At that time the following counties comprised this senatorial district: Antelope, Brown, Blaine, Garfield, Holt, Loup, Pierce, Keya Paha, Valley and Wheeler.

Charlie Schram went to Lincoln Tuesday morning.

At the democratic senatorial con-

vention held in Neligh last Saturday, John M. McDonough, editor of the O'Neill Tribune, was nominated for state senator.

The O'Neill Free Press by W. D. Mathews has made its appearance, making four papers in this city. As a newspaper man Mathews has but few equals in North Nebraska and will no doubt succeed. Long may it Press for the Free.

Joe Miller and Miss Eva Crandall were quietly married at the County Judge's office last Saturday morning.

Clarkson R. Young and Miss Maggie B. Long were married at the residence of H. G. Cross at Inman last Sunday, Rev. D. C. Winship officiating. Both

of these young people are residents of Parker.

Taken from the files of The Frontier of October 28, 1886:

Stephen McNichols, brother of John and P. H., came in from Leadville last Thursday evening and will make his many friends here a short and pleasant visit.

John McNichols, our city marshal, has leased the MoFitt barn and will hereafter have full charge of the same.

John McClellan, who had been a resident of Holt county for ten years, died at his home near Leonia on October 23rd at the age of 70 years.

TWENTY YEARS AGO.

Taken from the files of The Frontier of October 22, 1896:

R. R. Dickson has opened up his law office in rooms over Morris' drug store.

S. J. Weekes returned last Thursday evening from Lincoln where he had been attending the Grand Lodge of the Knights of Pythias.

Taken from the files of The Frontier of October 29, 1896:

Will Mullen, who has been attending school at Lincoln the past year, came home Saturday evening and will spend a few weeks recuperating among relatives and friends.

About twenty-five members of the O'Neill Ladies' McKinley Club went up to Atkinson Tuesday evening to attend a political rally. Several members of the McKinley and Hobart Club were also in attendance. The parade was the largest ever seen in this section of the state.

TEN YEARS AGO.

Taken from the files of The Frontier of October 18, 1906:

J. H. Meredith went to Omaha Monday.

Bob Brittell went to Tilden yesterday, he having work there for the winter.

James Ryan of Bonesteel, S. D., and Miss Kathryn Stanton of this city were united in marriage at the Catholic church last Wednesday morning.

Taken from the files of The Frontier of October 25, 1906:

Incalculable damage resulted from the storm of sleet Sunday, Monday and Tuesday. Telephone poles and wires were broken down and trees broken off and stripped of limbs. The telephone lines here were cut off from connection with the outside and only a small portion of city numbers were in operation. The storm was especially severe on stock as but few were prepared for a storm.

Political Advertising.



John L. Kennedy
Republican Candidate for U. S. Senator

Experienced as a Congressman. Closely associated with State and National affairs. Knows the needs of Nebraska people. The logical candidate to elect.

VOTE FOR HIM

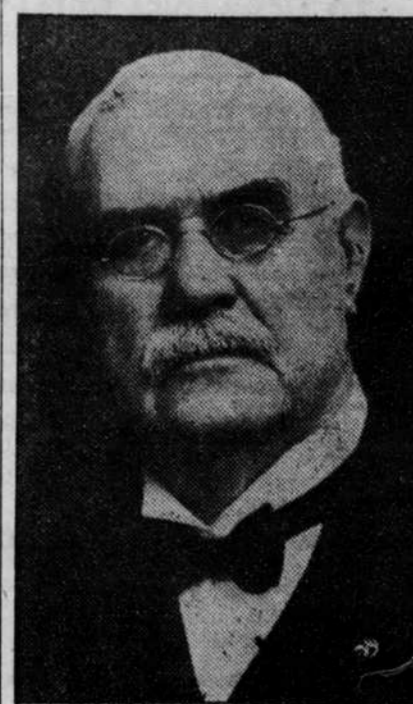


Chief Justice Andrew M. Morrissey
Non-Partisan Candidate to Succeed Himself.

The Judiciary has been taken out of politics. Judges are not nominated by political parties, but are voted for on a separate non-partisan ballot.

Judge Morrissey's work as Chief Justice has been heartily commended by those having business before the Supreme Court. In the April primaries the voters showed their appreciation of his efforts by giving him a splendid majority. Out of 93 counties he received a majority of 80; and in the whole state he received 9,993 more votes than were cast for any other candidate for Chief Justice. He is in vigorous health; in the prime of life; has demonstrated his fitness for the position, and for these reasons you are asked to help elect him to succeed himself.

Political Advertising.



JACOB FAWCETT
Candidate For Chief Justice of the Supreme Court.

Judge Fawcett was born in Wisconsin. He studied law and was admitted to the bar in Galena, Illinois. In 1888 he came to Nebraska, locating at Omaha, where he successfully practiced law until he was elected Judge of the District Court in 1895. He was re-elected four years later. In 1908 he was appointed Judge of the Supreme Court by Governor Sheldon to serve until the general election in 1909, at which time he was elected for a full term, which he is now completing. Four years ago he was elected by his associates as acting Chief Justice, and in that capacity has at all times presided in the absence of the Chief Justice. On the death of Judge Hollenbeck, in 1915, his associates joined in a written request to the governor for his appointment as Chief Justice. He is now a candidate for election to that office on the non-partisan ballot.

Judge Fawcett enlisted in the 16th Wisconsin Infantry at the age of fourteen years and served until the close of the Civil War. He was twice wounded. He is a man of vigorous health, of wide experience and fearless in the discharge of his duties. The best interests of Nebraska will be served by his election as Chief Justice.

SURVEYOR.

Vote for M. F. Norton for County Surveyor, a man of mature knowledge of your requirements: The Engineer who has located and superintended the substructure of most of the costly buildings in the county; who is constantly locating the town boundaries and surveying additions thereto, and even in the frontier town of Chambers (where some presuming persons saw fit to insult Mr. Norton and beat the Republican Party of this County out of their chosen candidate whom they have nominated and supported for the last seven years for surveyor of this county by writing in on their primary ballot the name of a totally inexperienced school boy) Mr. Norton has re-surveyed their town; surveyed and platted thereto five additions, namely: Fluckeys' Addition, Bakers' Addition, Robertsons' Addition, Bakers' Second Addition and Robertsons' Second Addition. All of which are shown of record in Mr. Norton's hand writing and over his signature and official title. Mr. Norton has surveyed their school grounds, their fair grounds, their race track, their public high ways and their burying ground or cemetery; besides scores of private surveys covering a term of twenty-two years and all to their entire satisfaction.

Mr. Voter, will you resent this imposition by putting a cross in the square opposite the name of the only practical Surveyor on the ticket

M. F. NORTON.

For County Superintendent.

I am a candidate for County Superintendent of Holt County having received the nomination on the Democratic, Prohibition and Socialist tickets.

I am a graduate of the Atkinson High School; taught in the rural schools of Holt County two years; grade teacher at Atkinson ten years, principal of the Atkinson High School two years.

I hold a Professional State Certificate for Life from the State of Nebraska and a Superintendent's Professional City State Certificate for Life from the State.

I am now serving you as County Superintendent and if my work has met with your approval I would like your support.

18-4 MINNIE B. MILLER.

The "people's attorney" in rate cases before the state railway commission is himself a candidate for election to the commission this year. He is among the most widely known Nebraskans from his authorship of the bank guaranty and the 8 o'clock saloon closing laws, and his great fight against the increase of telephone rates. His years of experience successively as farmer, business man, bank examiner, legislator and attorney, in connection with the soundness of his views on telephone and railway regulation, especially fit him for the office. Voters, don't fail to vote for him.

—Victor E. Wilson, for state railway commissioner. He is on the democratic ticket, but he thinks that the office should be made non-partisan.

WHEN IN OMAHA VISIT THE Gayety "Omaha's Fun Centre"

Brand New Show MUSICAL BURLESQUE EVERY WEEK

Clean, Classy Entertainment. Everybody Does. Ask Everybody

DON'T GO HOME SAYING I DIDN'T VISIT THE GAYETY

MONEY!

Loaned to buy or build your home or place of business.

Payable in monthly installments. Entire loan or any part thereof paid any time.

Optional Farm Loans made at lowest rates.

Farm, City and Auto Insurance written.

L. G. Gillespie

O'Neill, Nebraska

J. H. Davison

A Full Stock of Everything in

Harness and Horse Furnishings

SHOE REPAIRING

Guaranteed Goods and Satisfied

Customers. Highest Price Paid for Hides. Come and See Me.

O'NEILL, NEB.

\$595 - Maxwell

F. O. B. FACTORY

A. G. WYANT

O'NEILL, NEBRASKA

H. U. ROLAND

PRACTICAL AUCTIONEER

Farm Sales a Specialty.

Cry Sales Any Place.

Phone 301 for Dates.

O'NEILL, NEBRASKA

PREPAREDNESS

When in Need of Any Thing in

VETINARY

line, you will find us prepared to treat diseases of all domestic animals. We perform any and all Surgical Operations. We have state license and have had years of successful practice.

TRY US!

C. C. Fouts. A. J. Fouts
Phone No. 215, O'Neill, Neb. 7-4

FARM & RANCH LOANS

Very attractive rates on Farm loans; very liberal privileges to pay—also handle Ranch Loans.

You will do yourself no harm to write me. I will get on the ground, and will endeavor to give you prompt service.

FRED T. ROBERTSON,
Chambers, Neb.

THE CITY GARAGE

Walter Stein, Prop.

Auto Livery

All Kinds of Repairing. We have competent Workmen. All kinds of Oils and Automobile Accessories. Old Campbell Garage, O'Neill, Neb.

FARM LOANS

Repayable Any Day
No Renewal Required

MATURES IN 15½ YEARS

THE CONSERVATIVE SAVINGS & LOAN ASSOCIATION OMAHA

JOHN K. QUIG, Agent
For

HOLT COUNTY

O'Neill, Nebraska