

SUPERVISOR SESSIONS

Official: Publication: of: Proceeding

O'Neill, Neb. Dec. 23, 1904.—Board called to order at nine o'clock a. m. Minutes of yesterday's session read and approved. The board then proceeded with the examination of the delinquent tax list until 5 o'clock p. m. at which time the board adjourned until one o'clock p. m. Dec. 28, 1904.

F. W. Phillips, Chairman. E. S. Gilmour, Clerk.

O'Neill, Neb. Dec. 28, 1904.—Board called to order at one o'clock p. m. There being no quorum present adjourned until tomorrow morning at nine o'clock.

O'Neill, Neb., Dec. 29, 1904.—Board called to order at nine o'clock a. m. Present: Biglin, Grimes, Simar, Moler and Reuting.

On motion Supervisor Simar was elected chairman protem. Minutes of session Dec. 23 and 28 were read and approved.

Communication was read from Farmers Loan & Trust Co. asking permission to withdraw their petition for a refund.

On motion the clerk was instructed to inform them that the matter was in the hands of the County Attorney for settlement.

On motion the assessment of the Holt County Telephone Co. in book B, page 4 was stricken from the tax list, the same being a double assessment.

On motion the personal tax against Bennett Martin in Paddock township for the years 1889, 1890 and 1892 were stricken from the tax list, the same being an erroneous assessment.

On motion a refund warrant was ordered drawn in favor of J. S. Harrington for \$29.20 amount of tax on erroneous assessment in 1903.

On motion the following bonds were approved:

Township clerks—W. N. Dawson; Ewing; E. D. Henry, Willowdale.

Road Overseer District No.—C. P. Conger, 35; Frank Powell 19; John Funk Jr. 15.

On motion the board adjourned until one o'clock p. m.

One o'clock p. m. Board called to order and proceeded with the examination of the delinquent tax list until 5 o'clock p. m. at which time the board adjourned until 9 o'clock tomorrow morning.

W. P. Simar, Chairman, protem. E. S. Gilmour, Clerk.

O'Neill, Neb. Dec. 30, 1904.—Board called to order at nine o'clock a. m. Present: Biglin, Grimes, Simar, Skidmore, Moler and Reuting.

Minutes of yesterday's session read and approved.

The board then proceeded to the examination of the delinquent tax list until 12 o'clock at which time they adjourned until one o'clock p. m.

One o'clock p. m. Board called to order.

Impoverished Soil

Impoverished soil, like impoverished blood, needs a proper fertilizer. A chemist by analyzing the soil can tell you what fertilizer to use for different products.

If your blood is impoverished your doctor will tell you what you need to fertilize it and give it the rich, red corpuscles that are lacking in it. It may be you need a tonic, but more likely you need a concentrated fat food, and fat is the element lacking in your system.

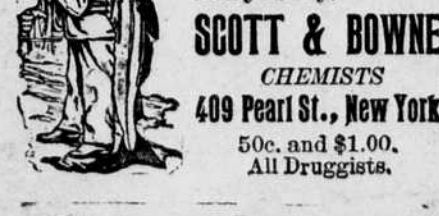
There is no fat food that is so easily digested and assimilated as

Scott's Emulsion of Cod Liver Oil

It will nourish and strengthen the body when milk and cream fail to do it. Scott's Emulsion is always the same; always palatable and always beneficial where the body is wasting from any cause, either in children or adults.

We will send you a sample free.

Be sure that this picture in the form of a label is on the wrapper of every bottle of Emulsion you buy.



SCOTT & BOWNE
CHEMISTS
409 Pearl St., New York
50c. and \$1.00.
All Druggists.

Ayer's

Don't try cheap cough medicines. Get the best, Ayer's Cherry Pectoral. What a record it has, sixty years of

Cherry Pectoral

cures! Ask your doctor if he doesn't use it for coughs, colds, bronchitis, and all throat and lung troubles.

"I have found that Ayer's Cherry Pectoral is the best medicine I can prescribe for bronchitis, influenza, coughs, and hoarse voices."

Small text: J. C. AYER & CO., Lowell, Mass.

Bronchitis

Correct any tendency to constipation with small doses of Ayer's Pills.

On motion the following bonds were approved:

Justice of Peace—J. M. Hunter, Willowdale; P. A. Lindberg, Shields. Road Overseer Dist. No.—Anthony Murry, 4; John Enright, 16.

On motion the following claims were allowed: E. S. Gilmour \$13.50 expenses in printing ballots.

On motion 1902 tax receipt No. 7423 was ordered cancelled as general fund warrant No. 46 was applied on same and a refund warrant ordered in favor of D. J. Cronin for amount.

On motion the treasurer was instructed to collect the delinquent personal tax, a list of such being furnished him by this board, and he was authorized to employ help to make a list of all delinquent personal taxes uncollected that the county may receive proper credit for same from the state.

On motion a refund warrant was granted to Albert Kenney, Inman township, for \$6 amount of labor tax paid both in cash and labor for the years 1902 and 1903.

On motion the court house committee were instructed to purchase a type writer for the office of county superintendent.

On motion the board adjourned sine die.

W. P. Simar, Chairman protem. E. S. Gilmour, Clerk.

Do Not Suppress a Cough.

When you have a cough do not try to suppress it but remove the cause. The cough is only a symptom of some disease, and the disease is what should cure, then the cough will stop of itself. The most common cause of coughing is a cold. Anodynes will promptly suppress the cough, and preparations containing chloroform, opium, etc., are used for that purpose, but they do not cure the cold. Chamberlain's Cough Remedy on the other hand does not suppress the cough, but relieves it by removing from the throat and lungs the mucus which obstructs the breathing, and allaying the irritation and tickling in the throat. It also opens the secretions and effectually and permanently cures the cold as well as the cough. For sale by P. C. Corrigan.

Very Low Excursion Rates to Denver, Colorado Springs and Pueblo.

Via the North-Western Line, will be in effect from all stations January 7, 8 and 9, 1905, with favorable return limits, on account of Annual Conventions, National Live Stock and Wool Growers' Association Two fast trains through to Colorado daily, only one night. For full information apply to agents Chicago & North-Western R'y.

Finding an Excuse.

An irascible old colonel who used to play golf at Sandwich, which is on the river Stour, had a habit, common with many, of blaming everybody but himself for his bad strokes. Finally one day, becoming badly bunkered, he first took mighty vengeance on the turf with his club; then, glaring around in expectation of the usually friendly comments and nobody saying anything, he blurted out, "How can you expect a man to play decent golf on these cursed links with ships passing up and down the channel?"—London Mail.

Eyes as a Sign of Intellect.

Generally the special point of difference between unimportant and remarkable people lies in their eyes. In the clear, steady, piercing gaze which is able to subdue or terrify the beholder, writes Lady Violet Greville in the Graphic. Sir Richard Burton's look could never be forgotten; neither, I imagine, could Napoleon's or Victor Hugo's or that of any other great man. The eye is the window of the brain, and through it shines the intelligence.

mutual slips.

Tom—What made you give me away so when I was telling that yarn at the dinner table? Dick—I didn't mean to; it was only a slip of the tongue. But that's no reason why you should have kicked me so hard! Tom—Oh, I didn't mean to—it was only a slip of the foot. —Detroit Free Press.

Ingratitude is a form of weakness. I have never known a man of real ability to be ungrateful.—Goethe.

GOSPEL OF PURE SEED

Northwestern Train Makes Tour With University Lecturers.

MANY FARMERS ARE INTERESTED

On the Selection of Seed Depends the Profits in the Corn Crop.

The seed corn special run over the Northwestern line left Lincoln Monday for a five days trip over this road. The special is composed of two auditorium cars for lecture demonstrations on the selection of seed corn and two private cars for the accommodation of the railroad officials and the university lecturers and newspaper correspondents. The cars are well equipped for lecture purposes and will seat about 100 each. At several stops overflow meetings have been held in the waiting room of the depot.

Great interest is being taken all along the line by the farmers. The attendance for the first two days was 3,500 and it was expected that 10,000 people will be the total for the week. The train went as far north as Bone-steel, and as far west as O'Neill, also reaching Hastings and Superior in the southern part of the state.

The largest crowd for Monday was at Wisner and for Tuesday was at Battle Creek.

The Northwestern officials in charge of the train are Supt. Hughes, Asst. P. and F. Agent Kuhn, Traveling Passenger Agent Benjamin, Train Master Roach. The University lecturers are Professors I. L. Lyon, Samuel Avery, A. L. Hacker, L. Turner, C. W. Pugsley, Alvin Keyser, E. H. Clark and D. P. Ashbuan of the Farmers Institute staff. The Lincoln and Omaha Dailes and the Nebraska Farmer have representatives in the party.

Synopsis of Lecture.

The average yield of corn per acre in Vermont is 40 bushels. The average yield per acre in Nebraska is 30 bushels. One would think from these figures that Vermont is in the corn belt and Nebraska just outside. What it means is that the difficulty in raising corn in Vermont has resulted in better methods of culture. If the same care were given the crop in Nebraska, the present yield would be doubled.

How does selection of seed increase the yield? By increasing the amount of corn on the ear. There a number of points to be considered in selecting ears of superior excellence. A cylindrical ear carries more corn and more uniform kernels than a tapering ear. A tapering ear may be due to kernels growing smaller towards the tip or to the dropping out of rows, which make irregular sized kernels and lessens the amount of corn. It may thus be seen that a tapering ear by dropping out rows or shortening kernels may decrease the corn on the ear by 5 or 10 percent. A rough ear with deep kernels produces the greatest yield of corn. It is obvious that a deep kernel is desirable, as it produces from 20 to 30 per cent more corn on the same cob than will a shallow kernel. A rough kernel is desirable because it is a deep kernel. On the other hand a smooth kernel is usually shallow. A deep, rough kernel goes with late maturity and can not be used in a region having a short growing season. There is, therefore, a limit to the depth of the kernel that can be grown in this region, but since we want the corn in our main crop to occupy the full growing season in order to give the largest yield, we want to grow as deep a grain as it is possible to mature.

The tip of the ear should be well filled out with kernels. A tapering tip with shallow kernels is a sign of degeneration. Such corn is in the process of "running out." A well filled out butt with deep kernels is desirable. The shank should be small and yet large enough so there will be no danger of the ear blowing off. A large shank means a large cob with shallow kernels. The shape of the kernels should be such that they fit snugly from tip to crown.

The kernels should not be square because they leave large spaces between the rows. You can't fit square kernels on a round cob without leaving space. They should not be round for the same reason, and should not be too pointed as they leave spaces at the cob. They should not be tapering on the narrow side because it leaves spaces at the cob.

The kernels except on the tip and butt should be of uniform size. It is impossible to make a machine drop the same number of grains per hill unless the grains are uniform. Our experiments show that with ordinary corn butted and tipped only sixty per cent of the hills contained three kernels, when it was attempted to plant that number. The best yields of corn can only be obtained from a perfect stand, hence the importance of accurate planting.

In order to get nearly uniform kernels it will be necessary to either screen the corn or sort the ears according to size of kernel. There is a prevalent opinion that it is desirable to send to a distance for seed corn. This

is a mistake. Our experiments have shown beyond doubt that corn must become acclimated before it can give its maximum yield. The most carefully bred varieties of corn have been brought from Indiana, Illinois and Iowa, but have not yielded so well as home grown corn until they have been raised here for several years. Seed brought from Iowa and grown side by side with seed of the same variety, but having been grown here for two years yielded much less than the latter.

Well-bred seed corn from a distance may not yield well at first, but pure-bred seed corn of the right type will prove better in the end than scrub corn.

Seed corn should be selected immediately. If left in the crib from now until spring the vitality will probably decrease 25 per cent. The corn should be placed on racks or hung up. It should be kept in a well ventilated room where it is not likely to freeze. Do not pack it in boxes or barrels.

Will it pay to go to this trouble? We can expect such selection to increase the yield at least five bushels per acre. Suppose we are raising 100 acres of corn. We would thus increase the crop 500 bushels, worth about \$200. The entire work of selecting and storing the 15 bushels of corn would not take more than five days, making our time about \$40 per day.

Star Twinkles

The old year has gone, the new year is with us. We wonder what it will bring for each? We hope success and happiness; we know it will bring peace to those who understand, for is it not so written?

Christmas eve at Hainsville was a decided success owing to so many entertainments around; the house was not crowded, the program was good, the presents were many and appropriate and all went home wearing "the smile that wont come off." We think a vote of thanks should be tendered Mrs. Joe Hunter for her untiring energy in training those who took part in the entertainment.

Mr. Theorlf is busy herding cattle these cool days.

Henry Smith and family spent Christmas with relatives near Ruth. The father, mother and brother, of Will Young is here visiting Will. We stated in a former article that Will went to Omaha for medical care which was a mis-information as it was an O'Neill Dr. who amputated his fingers which were shot, he is at this writing at home and we were informed yesterday that his arm is yet badly swollen.

After a week of vacation school has again commenced in the Star school house. The 1st term closed with a small program and treat from the teacher. Miss Ellis is to be commended on the good work she is doing.

Miss Mate Theorlf has been on the sick list the past week.

Miss Alice Lee of Dorsey spent New Years day with Miss Ethel Harris.

E. E. Cole and family ate New Years dinner with Aaron Harr's.

Jud Parkhurst was seen going around Saturday with his head in a sling as the result of too much lodge meeting.

Phoenix Pick-Ups

L. G. Coburn had business at the county seat Saturday.

Bert and Ted Anderson spent Sunday at Mr. Snyders at Annear.

Mrs. Damero was in town Friday. Mary Bartels visited at R. E. Coburn's the latter part of the week.

Emma Moore spent Saturday and Sunday with Atkinson friends.

Ethel Anderson visited with Jessie Coburn Sunday afternoon.

Henry Stansberry spent Sunday at Mr. McMains.

Dave Lamphier came out from town one day last week for a visit with his parents at Phoenix.

Mrs. Nilson was on the sick list Saturday.

All who attended the dance at S. W. Anderson's Friday evening report a good time.

Perry Miller visited at John Doroos the latter part of the week. Edith Damero was a caller at Mrs. Coburns Saturday last.

CASTORIA

The Kind You Have Always Bought, and which has been in use for over 30 years, has borne the signature of

and has been made under his personal supervision since its infancy. Allow no one to deceive you in this. All Counterfeits, Imitations and "Just-as-good" are but Experiments that trifle with and endanger the health of Infants and Children—Experience against Experiment.

What is CASTORIA

Castoria is a harmless substitute for Castor Oil, Paregoric, Drops and Soothing Syrups. It is Pleasant. It contains neither Opium, Morphine nor other Narcotic substance. Its age is its guarantee. It destroys Worms and allays Feverishness. It cures Diarrhoea and Wind Colic. It relieves Teething Troubles, cures Constipation and Flatulency. It assimilates the Food, regulates the Stomach and Bowels, giving healthy and natural sleep. The Children's Panacea—The Mother's Friend.

GENUINE CASTORIA ALWAYS
Bears the Signature of

Chas. H. Fletcher

The Kind You Have Always Bought

In Use For Over 30 Years.

THE CENTAUR COMPANY, 77 MURRAY STREET, NEW YORK CITY.

FIRST SAILING SATURDAY, JAN. 21
of the
Magnificent New Twin-Screw Steamer

MINNESOTA

Sailing from Seattle, Wash., for Japan, China and the Philippines.

Built expressly for the Asiatic trade by the
GREAT NORTHERN STEAMSHIP COMPANY.

The largest and finest equipped steamship ever built in the United States

For rates and full particulars call on or address F. I. WHITNEY, General Passenger and Ticket Agent, St. Paul, Minn.; or to the local agent of the Great Northern Railway.

Storz Brewing Co
Gold Medal Beer

ON DRAFT

and the renowned **Blue Ribbon** in quarts and pints

FOR SALE AT O'NEILL BY

WM. LAVIOLLETTE PEELER & CO.

O. O. SNYDER & CO.
LUMBER, COAL
BUILDING
MATERIALS, ETC.

PHONE 32 O'NEILL, NEB.

YOU CAN GET
CHATTEL MORTGAGE BLANKS
OF THE FRONTIER

writing to advertiser it will be to your interest to say that you are their "ad" in this