

COMMITTEE REPORTS TAX INVESTIGATIONS

DAWSON COUNTY TAXPAYERS' LEAGUE GETS INTERESTING FACTS

Following is a copy of the report mentioned above which was taken from the Gothenburg Independent. The report appeared in all the Dawson county papers of last last week. It is worth reading:

Lexington, Neb., April 3, 1922.
To the Officers and Members of the Dawson County Tax Payers League:
Honorable Sirs: Pursuant to instructions given at the meeting of the league held in Lexington on February 8, 1922, we, the committee you appointed to investigate conditions concerning our present high taxes, the reasons thereof, and also as to whether or not the taxes for the coming year could be lowered or not, beg to report as follows.

On February 19 we met in the county court house and spent the day searching and investigating county records, questioning and interrogating the commissioners and other county officers. The commissioners were in session this day and received us very cordially. We found that the commissioners had prepared in advance a statement showing the amounts levied in 1921 for the various funds, also showing estimate of the amounts being contemplated by them for this year's levies, these showing in the total a contemplated reduction of 41 per cent in county taxes for this year. The greatest proportion of this reduction being in the special bridge, old indebtedness and judgment funds. We find this statement shows they are contemplating but a nominal reduction in the general fund. We find they have considerably reduced the fixed labor wages for the coming year, placing the same on a basis more in common with the general average of labor wages in the county.

We gravely deplore the fact that the bridge fund cannot be greatly lowered for the coming year, due to the many blunders made in the construction of the state aid bridge at a repetition of such careless and in the spring of 1921 this bridge settled

badly and became unsafe for traffic. Due to faulty construction and material and poor supervision and inspection on the part of state authorities in the building of this bridge, it has proved to be almost an entire failure. This bridge originally cost the tax payers of Dawson county and the state \$39,000, and now, due to negligence and incompetency on the part of state authorities in construction of the original bridge, repairs must be paid by the tax payers of Dawson county. We recommend you request of our county officials a thorough investigation of this matter with the end in view of preventing a repetition of such careless and incompetent use of public funds.

We recommend that you request of our Commissioners a thorough and competent investigation and auditing of all county offices as far back as the law will both permit and protect, as it is at present being done in many counties in our state. This auditing to be done by parties thoroughly capable and reliable for such an investigation.

For General Information.

We find that the following offices are provided for by the state legislature and that it is mandatory on the commissioners to furnish funds for the same when conditions required by the legislature are met to-wit:

The County Farm Bureau, the County Fair fund, the County Truant officer, the Recorder of Deeds, the Highway Commissioner. If the tax payers desire relief from any of these, it will be necessary to secure repeal or amendment of these laws through the legislature.

We find that the office of county assessor and the payment of bounty on scalps of predatory animals can be abolished by petition to the commissioners to have this question placed on the ballots at any general election.

We recommend a striving on the part of our county officers for greater efficiency and stricter economy in all county work, especially do we recommend this be their endeavor in all road and bridge work where we feel great savings may be made the tax payers, and also we recommend that all employees on road and bridge work being employed on a monthly salary be compelled to give their entire working time to the county.

We feel this is no time for experimenting with fads and fancies but a time for real visible tax reductions.

We recommend careful scrutiny on behalf of our county authorities of all the "matching dollars" propositions.

The state has made a fair start in reduction of taxes, the county is contemplating a reduction and working with this end in view and now we recommend that all school districts, villages, and cities within our county the levies of which we find very large and by far the greatest proportion of our taxes do their share in this lowering the levies in their line.

Their appropriations should be cut down to meet present day conditions.

We recommend that all proceedings of our county commissioners be published in the paper receiving the contract for same, within ten days after each meeting of the county

board and that all items be published in such a manner that the general public may understand them.

We recommend that our state representative and senator be requested to endeavor to have repealed the law forbidding the commissioners to undertake bridge construction to an amount greater than \$500, believing our commissioners might be enabled to save the tax payer considerable money were they given freer hand in this matter; also that our representative and senator be requested to endeavor to have the laws regulating salaries of various state and county officials repealed to an extent that will place said salaries on a basis of present day prices and conditions.

We recommend that no county money be used to defray any expense of any county officer attending any meeting or gathering that is not totally and solely business concerning Dawson county and the tax payers thereof, and that all such moneys previously used in this manner be returned to the county by those who may have used same.

We find a vast difference in the assessed valuations of both real and personal property in Lincoln and Dawson county. In many cases we find the assessed valuation of personal property in the western part of Dawson county to be double that of similar property in the eastern part of Lincoln county. We recommend that the authorities of Dawson county investigate this matter thoroughly and strive to have the assessed valuation of Dawson county properly placed on a par with that of Lincoln county.

We recommend the attention of the county board and the highway commission be called to the following state laws: Sec. 3063, 1917 R. S., P. 172; Sec. 3067, 1913 R. S.; Sec. 3068, 1913 R. S.; Sec. 3069, 1913 R. S.; Sec. 3071, 1913 R. S.; Sec. 3072, 1913 R. S.; Sec. 3073, 1913 R. S., and Sec. 3075, 1913 R. S., with the view of facilitating their knowledge of the duties of the highway commissioner and creating greater efficiency and economy in the construction and maintenance of all roads and bridges within the county.

We further recommend that all bridge work, both repairing and new work that has been paid for but not checked over as to cost of construction and repair be checked and examined by the highway commissioner at earliest possible moment and reported to the county board with the view of ascertaining if said work has been performed and charged for according to contract.

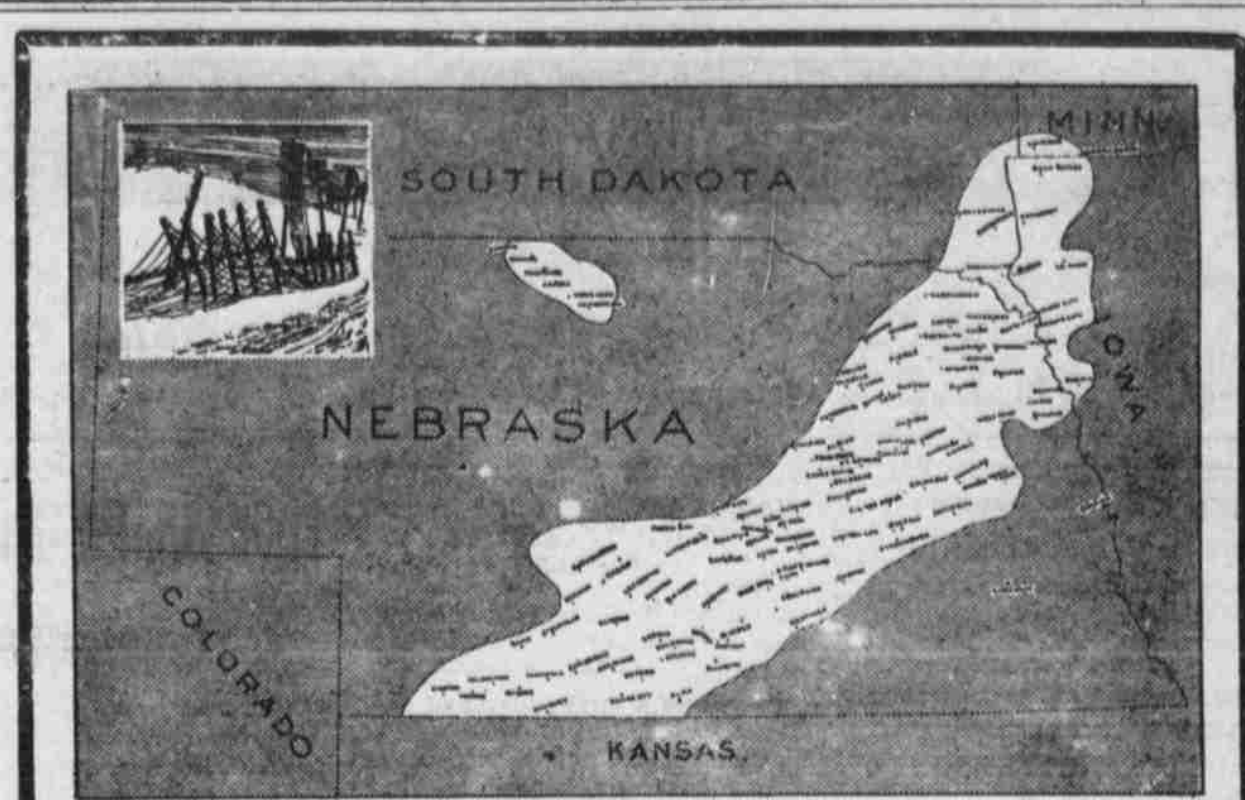
COMMISSIONERS' PROCEEDINGS

The board of county commissioners met in the Court House Monday, April 24, with present Commissioners Springer, Cohagen and Coker.

The following bills were approved and allowed:

Dr. S. J. Richardson, services	\$ 42.50
Mrs. F. J. Cook, care of poor	16.00
L. E. Ludwig, Com. 1	72.00
Cy Cochran, bridge work	5.00
N. C. Bowen, bridge work	42.00
Dave Murry, bridge work	15.00
Cy Clark, bridge work	28.00
Nick Camblin, bridge work	20.50
Wm. Earhart, bridge work	10.00
E. H. Dow, bridge work	13.00
Dick Earhart, bridge work	12.50
Lon Perkins, bridge work	24.00
Geo. Brown, bridge work	15.00
F. Phillips, bridge work	12.00
N. S. Cover, merchandise	14.37
Leo Toillion, dragging	6.00
Ollie Z Toillion, dragging	3.75
Clarence Mathers, road	10.00
E. E. Feagun, road	70.00
Henry Hansen, road	10.00
Dan Carlisle, road	15.00
Wm. Schroeder, road dist. 43	5.00
Frank Carbon Co.	7.00
J. N. Keeney, Com. 3	16.50
Ralph Clough, road dist. 44	15.00
Wm. Horner, road dist. 44	7.50
Robert Horner, road dist. 44	33.00
Clarence Clough, road dist. 44	25.00
Milton Raney, road dist. 44	29.00
Ray Raney, road dist. 44	16.00
Dee Raney road dist. 44	30.00
Worth Kenney, road dist. 44	20.00
Walter Single, Com.	7.00
N. G. Dean, county poor	446.81
J. W. Rose, county poor	7.00

Adjourned to April 25.
Dixon Optical Co., eye service.



The above map shows the territory swept by the sleet storm on April 10th

\$950,000 of Telephone Property Lost in a Night

The chilly afternoon of April 10th a light rain began to fall over a strip nearly a hundred miles wide, from southwestern Minnesota to southwestern Nebraska.

As evening came on the rain began to freeze as it fell on the telephone wires. Before midnight the wires in many places were coated with ice nearly an inch thick. Under the weight of the ice, and whipped by a rising wind, mile after mile of telephone poles and wires swayed back and forth, and then crashed to the ground.

A survey of this company's damage from the storm shows the following result:

- 26,944 miles of wire out of service
- 21,200 poles broken down or destroyed
- 71 exchanges in the storm area
- \$950,000 property loss

Nearly all of the long distance lines damaged by the storm have been restored by more than 1,200 telephone repairmen who have been on the job constantly since the storm. And in those cases where the local lines were damaged, the repair work is going forward as rapidly as it is possible to do so.

It is a man's size job to reset more than 20,000 poles, to re-attach the crossarms and wires to them, and to re-establish communication over telephone wires that if extended in a single line would reach more than around the world.

We take this opportunity to thank our customers for the splendid spirit of co-operation with which you have accepted the unavoidable interruption of telephone service, and we want to assure you that we have been doing everything possible to hurry the reopening of communication.

NORTHWESTERN BELL TELEPHONE COMPANY

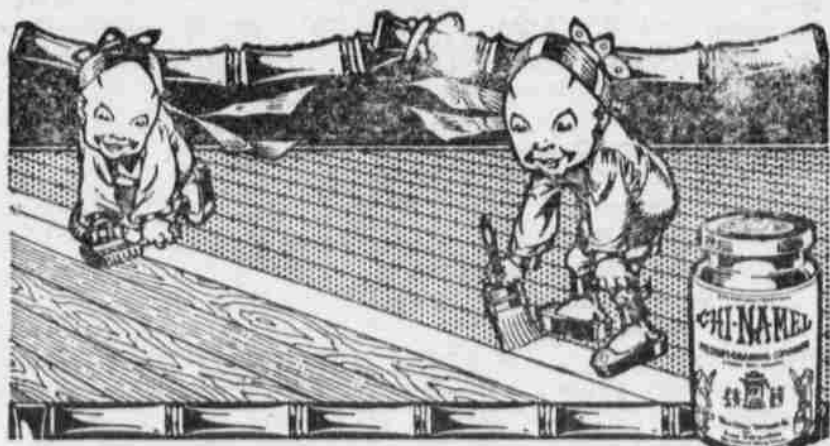


PASTURE FOR LEASE

Six sections in Lincoln County, Nebraska; nine miles northwest of Sutherland; two wells, mills and tanks; rolling land; mixed grass; immediate possession.

I will be in Sutherland about May 1st. Write for information and I will advise by letter or wire exact date to meet me in Sutherland.

JOHN W. BAUGHMAN
Address Liberal, Kansas.



Chi-Namel Demonstration and Exhibition

CHI-NAMEL DEMONSTRATOR will be at Our Store on the dates given below, to give Valuable Suggestions for finishing old or new, hard or soft wood floors, furniture, woodwork, doors, walls, ceilings, radiators, stove pipes, porch furniture, screens, autos, etc. with Chi-Namel High Quality Enamels, Paints and Varnishes.

The Ready-to-use, Practical and Inexpensive Method.

Simplifies and Beautifies

by giving old and dingy softwood furniture and woodwork that New, Lustrous, Hardwood Effect.

Costs only 3c per sq. ft. and OUTWEARS most Hardwood Finishes.

THIS FREE COUPON entitles bearer to one 30 cent Can of Chi-Namel FREE at our Store upon purchase of a 25c Varnish Brush to insure a fair trial or will be accepted as 30c upon purchases of larger cans of Chi-Namel Products.

Name _____ Address _____

DEMONSTRATION DAYS MAY 1 AND 2

STONE'S DRUG STORE

LIBERTY BONDS

We will purchase a limited amount of Liberty Bonds at par (full face value) and accrued interest in exchange for investments bearing a higher rate of interest, or will pay cash less a very small handling charge.

GOODMAN-BUCKLEY TRUST CO.

114 East Front Street.

You Don't Buy Inexperience or Take Chances When We Work on Your Car.

EXPERT AUTO TOP MAKERS AND TRIMMERS PLATTE AUTO TRIM CO.

PHONE 300J

107 West 6th Street

ALMOST ONE

An accident that narrowly missed being serious occurred Tuesday afternoon east of this city when an extra west bound freight with 71 cars and double-header pulled the front truck out from under the eleventh car in the train. Luckily the truck remained on the track and the damaged car with the train following did not turn over. The train was going about 35 miles an hour and it seems strange that a serious wreck did not occur. As it was practically no damage or delay occurred.—Lexington Clipper.

MRS. M. HENRY GILFOYL

Teacher of Voice Culture and the Art of Singing
Res. Studio 108 W. Third Phone 114J

The Farmer's Auctioneer

H. M. Johansen,
North Platte, Nebraska.
Phone 783F3

For those who do not have enough stock or machinery for a general farm sale, I am located so I can hold a combination sale at North Platte or at the Fairview dairy 1 1/2 miles west of town, I have always got enough stock or machinery listed with me so we can hold a combination sale any time.

NOTICE OF TAKING UP ESTRAY

Taken up by the undersigned, 4 horses, near the stock yards, County of Lincoln, State of Nebraska; on the 26th day of March 1922: two bay geldings, weight about 1300 pounds; one black gelding, weight about 1300 pounds; one bay mare, weight about 1200 pounds.
Dated this 28th day of March 1922.
(Signed) J. E. STEVENS.

FOR SALE

Choice lot of young Red Poll bulls at farmers prices at

PAYNE'S DAIRY FARM

South Dewey Street

JOHN S. SIMMS, M. D.

Special Attention Given to Surgery
McDonald Bank Building
Office Phone 83 Residence 38

DR. L. A. SNAVELY

Dentist
X-Ray Diagnosis Oxygen and Gas Anesthesia for Extractions.
Over Union State Bank
Phone 296.

DERRYBERRY & FORBES

Licensed Embalmers
Undertakers and Funeral Directors
Day Phone 41 Night Phone Black 548

GEO. B. DENT

Physician and Surgeon
Special Attention Given to Surgery and Obstetrics
Office: Building & Loan Building
Phones: Office 130 Residence 115