

**OF INTEREST TO RURAL READERS**

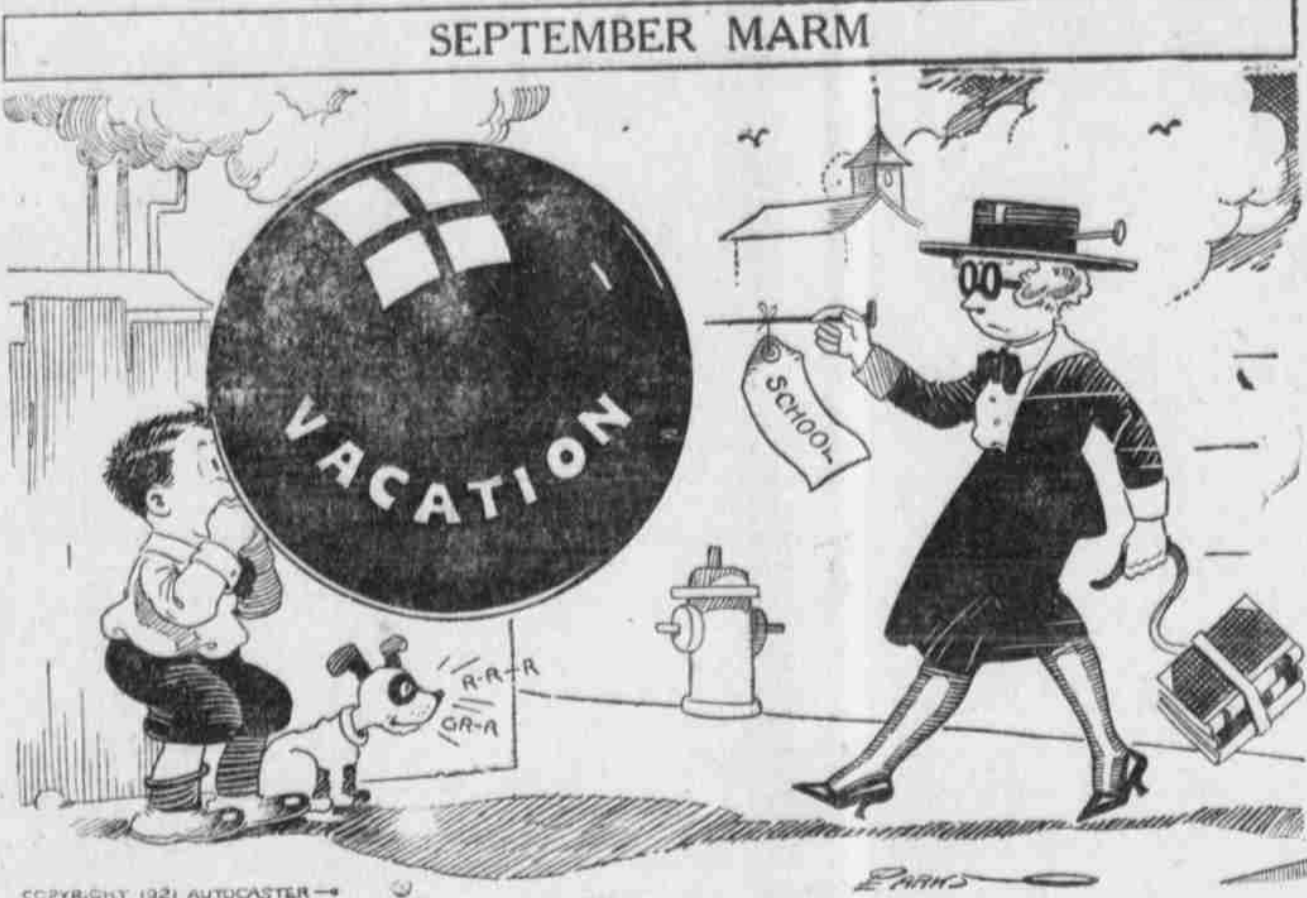
FARM BUREAU NEWS SERVICE  
SUPPLIES ITEMS FOR THE  
TRIBUNE READERS

American cheese is such a good, rich palatable food that no home should be without it, especially when it is considered that it can be made almost as easily as butter. The United States Department of Agriculture recently issued a farmers' bulletin giving full directions for making this cheese. With a milk supply on every farm there is no good reason why every farmer should not have this food on his table. Ask any agricultural extension agent or write the College of Agriculture for farmers' bulletin 1191.

Several eastern Nebraska counties are sufficiently infested with Hessian flies to make late wheat sowing advisable, according to the State College of Agriculture. The fall wheat counties along the Missouri river and the second counties back may well delay sowing until the last week in September. As a general rule, fairly early seeding is desirable. Condition in certain sections this year, however, warrant delay in order to avoid the Hessian fly pest. Those attending the State Fair should not fail to study the charts and other exhibits of the College of Agriculture and the State Entomologist, showing the distribution of the Hessian fly dates of seeding, and other information relative to insects and pests.

Many farmers, attracted by their higher yielding quality, are arranging to sow Kanred and other improved strains of wheat this fall. Complaints regarding the milling qualities of these improved strains have little or no foundation. The same complaints were heard when Turkey Red wheat was introduced. There is no way to identify Kanred wheat after it is threshed. The only certain means of identification is by the rust test while it is standing in the field, Kanred being immune to certain strains of back rust Experiments conducted in Kansas, the home of Kanred, show no more variation in the milling qualities of this wheat than in the milling qualities of other strains grown under similar conditions. The Nebraska College of Agriculture has issued a circular setting forth what the Kansas Crop Improvement Association has to say about Kanred. Those interested should ask their agricultural agent or write the College for Extension Circular 112.

The Union Pacific Railroad is seeking to encourage boys to take more interest in farming by offering free scholarships in the University of Nebraska to the highest ranking club boys in the counties served by the road. A scholarship worth \$75, and free transportation will be given away in each of 29 counties this year



and in each of 39 counties next year. Competition is open to all club boys this year, but it will be limited to those raising corn, wheat or potatoes next year. The winner in each county will be selected from among the ten highest ranking boys. The scholarship must be used in the College of Agriculture, School of Agriculture or in the winter short course in agriculture. The railroad officials believe that club work is doing much to interest the coming generation in the land, and they desire to encourage boys and girls to continue their study of agriculture by attending the state school at Lincoln. Full information about these scholarships may be obtained from agricultural extension agents or the College of Agriculture.

Much interest is developing over the state in stopping the washing of the soil. This is especially true in the southeastern counties, where the soil washes quite badly, and where much good soil has already been allowed to run away. The State College of Agriculture has been assisting county farm bureaus in staging demonstrations as to what may be done to stop washing. In many cases, a simple brush dam, well staked and wired, will check the washing and save a lot of soil. In some instances a more elaborate dam is necessary. In all cases the sooner the work is begun the better. A few counties in improving the road, are co-operating with farm owners in installing a special culvert that will help prevent the formation of ditches through the land. Several county farm bureaus are planning demonstrations, and work for this fall and winter, in an effort to institute a definite program to save the soil of valuable farms. Farmers interested in this work should talk with their agricultural extension agent or write the College of Agriculture.

According to announcement made at the American Farm Bureau headquarters, a producer-owned and controlled co-operative live stock commission company is to be established at the National Stock Yards, East St. Louis. The Farmers' Live Stock Marketing Committee of fifteen has appointed a special committee with authority to select the first board of directors for the new company. The committee is also authorized to proceed in the organization of the St. Louis co-operative commission company in accordance with the co-operative marketing plan of the committee of fifteen. The first terminal board will consist of seven members. A resolution calling for a flat duty of thirty cents per pound on wool to be incorporated in the Fordney tariff bill, was passed at a meeting held recently by the national wool committee of the American Farm Bureau Federation at the Chicago office of that organization. Due to the low price of foreign wool, and the low rate of exchange, the resolution states, the provision in the present draft of the bill calling for a tariff limit on wool of 35 per cent ad valorem minimizes the effects of the tariff to the vanishing point, and would work a flagrant injustice to the production of domestic wool. Arrangements were made at the meeting for carrying on a strenuous fight before the senate finance committee, the congressional agricultural bloc, and for informing the consuming public in regard to actual conditions pertaining to the sheep industry in this country.

The Farmers Live Stock Marketing committee of fifteen has agreed upon the essential plan for live stock marketing, according to word received at Nebraska headquarters of the Farm Bureau Federation. The main features of the plan which will soon be submitted for national ratification are as follows: (a) That co-operative live stock shipping associations will hold membership in the terminal livestock shipping associations, which in turn will hold membership in the national association of live stock producers. Individual stock growers may also hold memberships in the terminal association. (b) The terminal live stock commission association provides for the establishment of producer-owned and controlled co-operative livestock commission companies at the markets where needed. The demand for the terminal association must come from the members themselves. Subsidiary to each commission company will be a stocker and feeder company, patronage dividends to be prorated back to the consignor member. The association at the terminal markets will be governed by a board of five to nine members. This board shall select the manager, hire employees and direct the general policy. Earnings from the commissions will be prorated back on the patronage dividend plan. The directors of the terminal association will be elected by delegates to the annual convention. (c) The various terminal associations will federate into a national organization, governed by a board of not less than seven or more than fifteen directors. The national board will be supported by the terminal commission associations. National headquarters will be in Chicago. No contract to be signed by the members is anticipated. The sub-committee on co-operative marketing will call a conference to be held in Chicago September 2 to work out a standardized plan for the various live stock shipping associations. An effort will be made to outline ideal shipping associations. President James R. Howard, of the American Farm Bureau Federation has been requested to call a ratification conference of the live stock producers of the nation between October 15 and November 1 to consider the full report of the committee of fifteen.

quarters, a producer-owned and controlled co-operative live stock commission company is to be established at the National Stock Yards, East St. Louis. The Farmers' Live Stock Marketing Committee of fifteen has appointed a special committee with authority to select the first board of directors for the new company. The committee is also authorized to proceed in the organization of the St. Louis co-operative commission company in accordance with the co-operative marketing plan of the committee of fifteen. The first terminal board will consist of seven members. A resolution calling for a flat duty of thirty cents per pound on wool to be incorporated in the Fordney tariff bill, was passed at a meeting held recently by the national wool committee of the American Farm Bureau Federation at the Chicago office of that organization. Due to the low price of foreign wool, and the low rate of exchange, the resolution states, the provision in the present draft of the bill calling for a tariff limit on wool of 35 per cent ad valorem minimizes the effects of the tariff to the vanishing point, and would work a flagrant injustice to the production of domestic wool. Arrangements were made at the meeting for carrying on a strenuous fight before the senate finance committee, the congressional agricultural bloc, and for informing the consuming public in regard to actual conditions pertaining to the sheep industry in this country.

The Farmers Live Stock Marketing committee of fifteen has agreed upon the essential plan for live stock marketing, according to word received at Nebraska headquarters of the Farm Bureau Federation. The main features of the plan which will soon be submitted for national ratification are as follows: (a) That co-operative live stock shipping associations will hold membership in the terminal livestock shipping associations, which in turn will hold membership in the national association of live stock producers. Individual stock growers may also hold memberships in the terminal association. (b) The terminal live stock commission association provides for the establishment of producer-owned and controlled co-operative livestock commission companies at the markets where needed. The demand for the terminal association must come from the members themselves. Subsidiary to each commission company will be a stocker and feeder company, patronage dividends to be prorated back to the consignor member. The association at the terminal markets will be governed by a board of five to nine members. This board shall select the manager, hire employees and direct the general policy. Earnings from the commissions will be prorated back on the patronage dividend plan. The directors of the terminal association will be elected by delegates to the annual convention. (c) The various terminal associations will federate into a national organization, governed by a board of not less than seven or more than fifteen directors. The national board will be supported by the terminal commission associations. National headquarters will be in Chicago. No contract to be signed by the members is anticipated. The sub-committee on co-operative marketing will call a conference to be held in Chicago September 2 to work out a standardized plan for the various live stock shipping associations. An effort will be made to outline ideal shipping associations. President James R. Howard, of the American Farm Bureau Federation has been requested to call a ratification conference of the live stock producers of the nation between October 15 and November 1 to consider the full report of the committee of fifteen.

**LOCAL AND PERSONAL**

Mrs. E. R. Marshall visited in the city Friday.  
Mrs. O. G. Cross of Paxton visited local friends Friday.  
Mrs. C. W. Wood left Saturday to visit relatives for a week.  
Miss Miriam Jones left Saturday for Cheyenne to visit friends.  
Quigley Wilson went to Paxton Saturday to visit his grandmother.  
Miss Lucy Tilford spent Saturday in Maxwell transacting business.  
Mrs. Robert Queale spent Saturday and Sunday in Brady visiting friends.  
Miss Gladys Bird returned Saturday from Chicago where she visited friends.  
Mrs. Roy Johnson and baby went to Lexington the latter part of the week to visit.  
Mrs. A. B. Wortman and baby went to Cozad Saturday to spend a week visiting friends.  
Mrs. Omar Huff left Saturday for Grand Island to visit at the home of Mrs. J. Horrigan.  
Miss Alma Sjolinter returned to her home in Grand Island Sunday after visiting local friends.  
Mrs. Elmer Mastin and children returned Sunday from Denver where they have been visiting.

A baby girl was born to Mr. and Mrs. A. A. Smith Friday. All concerned are doing nicely.  
Misses Hattie and Lydia Bjorklund are off duty at the W. J. O'Connor store on a two weeks' vacation.  
Mr. and Mrs. Wm. Anderson left Saturday for Franklin, Nebr. where Mr. Anderson has accepted a position.  
Coy States returned the latter part of the week from Lincoln where he has been attending the state university.  
Mrs. Wm. T. Pritchard returned the latter part of the week from Omaha where she visited her sister for a few days.  
Miss Sylvia Watts returned from Gothenburg Saturday and is a guest at the home of her brother Thos. Watts.  
Misses Wilma Coates, Eva Hoagland and Marjory Russell returned yesterday from Kearney where they attended a house party given by Miss Mary Hendryx.

**The Farmer's Auctioneer**  
**H. M. Johansen,**  
North Platte, Nebraska.  
Phone 783F3  
For those who do not have enough stock or machinery for a general farm sale, I am located so I can hold a combination sale at North Platte or at the Fairview dairy 1 1/2 miles west of town. I have always got enough stock or machinery listed with me so we can hold a combination sale any time.

**Ed Kierig, Auctioneer.**

General Farm Sales A Specialty, also Real Estate, References and Date-First National Bank.  
North Platte, Nebraska.

**NOTICE TO PROPERTY OWNERS.**

Notice is hereby given that the City Council of the City of North Platte, Lincoln County, Nebraska, will sit as a board of equalization beginning at the hour of 8 o'clock A. M. on the 6th day of September 1921, at the council room of the Fire Station situated on the corner of West Front and Vine Streets, in the City of North Platte, Nebraska, for the purpose of levying on the real estate lying and being within Sewer District G-5, taxes for the purpose of paying costs of the construction of the lateral sewer in said sewer district G-5, and that the said taxes will be levied upon each parcel of real estate according to the extent of benefits to such property by reason of the construction of said lateral sewer and if the city council shall find such benefits to be equal and uniform, such levy of taxes will be according to the front foot of the lots or parcels of real estate within said sewer district G-5, or according to such other rules as the City Council sitting as a board of equalization may adopt for the distribution or adjustment of such costs.  
ALL PERSONS INTERESTED will file their objections, if any they have, to the assessing of taxes against their property on or before the 6th day of September, 1921 at 8 o'clock P. M. with the City Clerk.  
By order of the Mayor and City Council made the 2nd day of August, 1921.  
O. E. Elder, City Clerk.

**NOTICE TO PROPERTY OWNERS.**

Notice is hereby given that the City Council of the City of North Platte, Lincoln County, Nebraska, will sit as a Board of Equalization beginning at the hour of 8 o'clock A. M. on the 6th day of September, 1921, at the Council Room of the Fire Station situated on the corner of West Front and Vine Street, in the City of North Platte, Nebraska, for the purpose of levying on the real estate lying and being within paving District No. 2, taxes for the purpose of paying costs of the construction of the paving of the alleys in said paving District No. 2, and that the said taxes will be levied upon each parcel of real estate and lots and lands abutting upon the alleys so paved, according to the extent of benefits to such property by reason of the construction of said paving and if the city council shall find such benefits to be equal and uniform, such levy of taxes will be according to the abutting foot of the lots or parcels of real estate within said Paving District No. 2, or according to such other rules as the city council sitting as a Board of Equalization may adopt for the distribution or adjustment or such costs.  
ALL PERSONS INTERESTED will file their objections, if any they have, to the assessing of taxes against their property on or before the 6th day of September, 1921 at 8 o'clock P. M. with the City Clerk.  
By order of the Mayor and the City Council made the 2nd day of August, 1921.  
O. E. Elder, City Clerk.

**NOTICE TO PROPERTY OWNERS.**

Notice is hereby given that the City Council of the City of North Platte, Lincoln County, Nebraska, will sit as a Board of Equalization beginning at the hour of 8 o'clock A. M. on the 6th day of September, 1921, at the Council Room of the Fire Station situated on the corner of West Front and Vine Streets, in the City of North Platte, Nebraska, for the purpose of levying on the real estate lying and being within paving District No. 7, taxes for the purpose of paying costs of the construction of the paving of the alleys in said paving District No. 7, and that the said taxes will be levied upon each parcel of real estate and lots and lands abutting upon the alleys so paved, according to the extent of benefits to such property by reason of the construction of said paving and if the city council shall find such benefits to be equal and uniform, such levy of taxes will be according to the abutting foot of the lots or parcels of real estate within said Paving District No. 7, or according to such other rules as the city council sitting as a Board of Equalization may adopt for the distribution or adjustment of such costs.  
ALL PERSONS INTERESTED will file their objections, if any they have, to the assessing of taxes against their property on or before the 6th day of September, 1921 at 8 o'clock P. M. with the City Clerk.  
By order of the Mayor and City Council made the 2nd day of September, 1921.  
O. E. Elder, City Clerk.

Office 340 House 1367  
**DR. W. I. SHAFFER**  
Osteopath Physician  
Over the Oasis. North Platte.

**OTIS E. PLATT, M. D.,**  
Physician and Surgeon  
X-RAY  
Diagnosis and Treatment  
Calls answered Day and Night.  
Over Union State Bank.  
Office Phone 296 House Phone 1236J

**W. T. PRITCHARD**  
Graduate Veterinarian  
Ex-Government Veterinarian and ex-assistant deputy State Veterinarian.  
Hospital 315 South Vine Street. Hospital Phone 633, House Phone 633.

**DRS. STATES & STATES**  
Chiropractors  
5, 6, 7 Building & Loan Building.  
Office Phone 70. Res. Phone 1242

**DR. J. R. MCKIRAHAN**  
Practice Limited to Diseases of Women and Surgery  
OVER REXALL DRUG STORE  
Phones—Office 113. Residence 640J

**WYLIE WALKER**  
Expert Piano Tuner and Repairer.  
Leave orders at 914 W. 4th St.  
Or Phone 334.

**GEO. B. DENT**  
Physician and Surgeon  
Special Attention Given to Surgery and Obstetrics  
Office—Building & Loan Building  
Phone: Office 130. Residence 1115

**HOWARD YOST**  
Dental Surgeon  
Oral Prophylaxis Mouth Hygiene  
Phone 307 Twinem Bldg.  
Office phone 241. Res. phone 317

**L. C. DROST,**  
Osteopathic Physician  
North Platte, Nebraska  
Knights of Columbus Building.

**JOHN S. SIMMS, M. D.**  
Special Attention Given to Surgery  
McDonald Bank Building  
Office Phone 83 Residence 35

**DR. HAROLD FENNER**  
Osteopath  
OVER HIRSCHFELD'S  
Office Phone 333 Res. Phone 1020

**DR. REDFIELD**  
PHYSICIAN, OBSTETRICIAN  
Surgeon, X-Ray  
Calls Promptly Answered Night or Day  
Phones Office 642, Residence 676

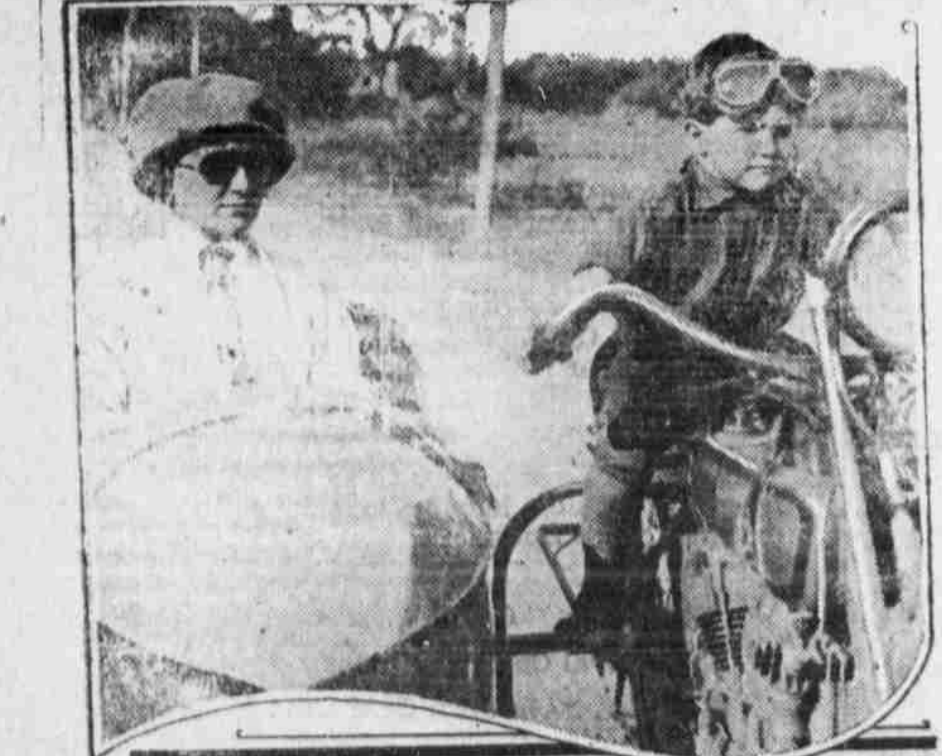
**DERRYBERRY & FORBES,**  
Licensed Embalmers  
Undertakers and Funeral Directors  
Day Phone 41  
Night Phone Black 588

**SHERIFF'S SALE**  
By virtue of an order of sale issued from the District Court of Lincoln County, Nebraska, upon a decree of foreclosure rendered in said Court wherein Continental Guaranty Corporation, a Corporation, is plaintiff, and Fred J. Bremers is defendants, and to me directed, I will on the 19th day of September, 1921, at two o'clock P. M. at the east front door of the Court House in North Platte, Lincoln County, Nebraska, sell at Public Auction to satisfy said decree, interest and costs, the following described property, to-wit:  
Lot Ten (10) of Platteview Subdivision, Lincoln County, Nebraska.  
Dated North Platte, Neb., August 15, 1921.  
A. J. Salisbury, Sheriff.

**NOTICE OF APPLICATION FOR TERMINATION OF HEIRSHIP.**  
In the County Court, Lincoln County, Nebraska.  
In re Thomas M. Dawson, deceased.  
Notice is hereby given to Charly J. Dawson, John V. Dawson, Charles L. Dawson, Frank G. Dawson, Guy T. Dawson, Laura J. Moore and to all other persons, both creditors and heirs interested in the estate of Thomas M. Dawson, deceased, that a petition was filed in the County Court of Lincoln County, Nebraska, August 1st, 1921, in which was set out as facts that Thomas M. Dawson died July 31, 1902, that at the time of his death he was a resident of Lincoln County, and was seized in fee of the Northeast Quarter of Section 26, Township 9, Range 26, West of the 6th P. M. in Lincoln County, Nebraska. The petitioner Arthur D. McNickle is now the owner in fee of the said premises and prays for a determination of the time of the death of the decedent, and a determination of the heirs of said deceased, the degree of kinship and the right of descent of the real property belonging to the deceased. That the time for hearing said petition has been fixed at September 15th, 1921, at 10 o'clock a. m. by the County Court.  
WM. H. C. WOODHURST,  
County Judge.

**WELLS C. JONES,**  
Attorney for the Petitioner.

**MILWAUKEE CHILD OF THREE DRIVES MOTORCYCLE**



Bobby Scherer, of Milwaukee, three years old, makes the claim of being the youngest motorcycle rider in the world. In a recent 1,500-mile tour with his mother, he drove the machine a majority of the time, while his mother directed the operation from the side car. He displays rare judgment in driving for one so young, it is said.

**A QUIET PLACE**  
to bring your friends to dine. A place where the greatest care is exercised in the selection of the food materials. A place where the cuisine is exquisite, where the china and cutlery is tasteful, and the surroundings pleasant. This is such a place. Come and enjoy it.  
**HOTEL PALACE AND CAFE.**