

## DODGE BROTHERS 4 DOOR SEDAN

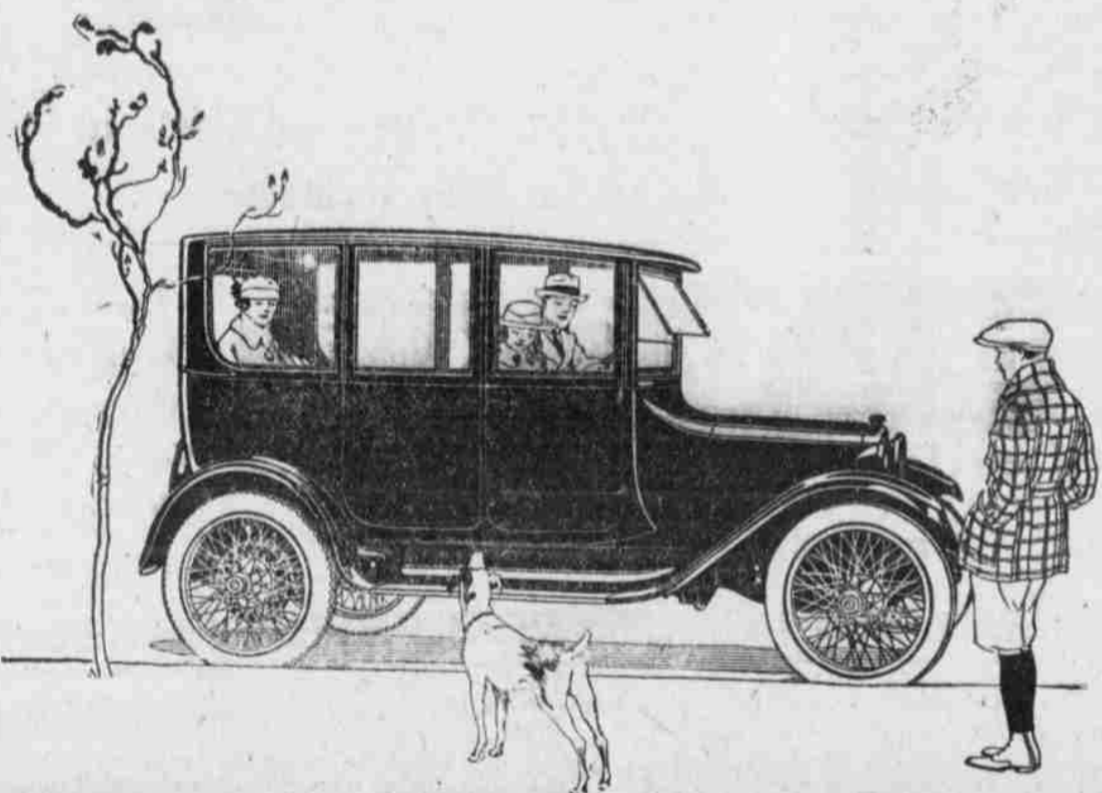
The Sedan has become a permanent part of the substantial domestic life of the nation.

This could not be so if the car were not deserving in the sense of being good and economical.

The gasoline consumption is unusually low.  
The tire mileage is unusually high.

**J. V. ROMIGH,**

Cor. 6th and Locust. North Platte, Nebr.



## OF INTEREST TO COUNTRY FOLKS

FARM BUREAU NEWS SERVICE  
SUPPLIES ITEMS FOR THE  
TRIBUNE READERS

A number of Hereford breeders of Dawes county and fifteen boys recently met in Crawford and organized a Calf Club. Sam Swinbank, Clyde Buffington and Mr. Lemons were named on a committee to purchase calves for the club. Mr. Buffington was appointed local leader for the club. A pig club was recently formed and some interesting meetings will be scheduled this summer.

A large number of Duroc Jersey breeders of northwest Nebraska met at Hay Springs recently and organized the Northwestern Duroc Breeders' association. The matter of a show to be held this fall was discussed at some length and twenty men agreed to enter their herds in case such a show should be held. This show will probably be held at Chadron. Four hundred dollars in premium money has been appropriated.

A farmers' livestock shipping association was recently formed in Frontier county. A number of farmers have been shipping together for some time and have found that it pays to do it co-operatively. The following officers were elected: President, August Olson; vice-president, F. H. Hecht; secretary-treasurer, Thorwald Peterson; board of directors, Will Price, B. A. Wilford, E. J. Keigh was elected by the board as sales manager.

Officials of the U. S. Grain Growers' Inc. have just announced that because of the organization work which remains to be done the campaign for new members will not start in Nebraska for at least a month and that due publicity of this campaign would be given beforehand in the press. This warning is given the farmers of the state in order that they may beware of fraudulent solicitors, should such solicitors appear.

C. H. Gustafson of Lincoln, former president of the Farmers' Union in

this state, was elected president of the U. S. Grain Growers' Inc. at a meeting of the board of directors held in Chicago last week following receipt of a telegram giving notice that the incorporation of the company had been effected. J. M. Anderson of St. Paul, Minnesota, was elected first vice-president; Wm. G. Eckhardt of Dekalb, Illinois, treasurer, and Frank M. Myers of Fort Dodge, Iowa, secretary.

Though free transportation rulings for gift-corn terminated on April 15, it does not necessarily mean that the project has been brought to a close in the state, according to H. D. Lute of the Nebraska Federation. Freight on cars billed out after April 15 is being met by the relief committees from the cash they have on hand. Figures from the Chicago office of the gift-corn project total 431 cars or approximately 800,000 bushels. On April 15 Nebraska had contributed 20 cars. Illinois led the list with 147 cars.

Several purebred livestock breeders throughout the state have raised objection to the value placed upon their stock by assessors, according to Fred Dewese, head of the legal service department of the state federation. He is of the opinion that the county assessor should use his influence to have the precinct assessors use a method of valuation which will give to the same classes of stock the same value throughout the county. Purebred stock assessments may vary in adjoining counties and the State Board of Equalization may deal with that question, but uniformity within the county may best be secured by friendly co-operation between the breeders of purebred stock and the county assessor.

After an invitation to speak before the Omaha Chamber of Commerce had been withdrawn due to pressure from livestock and grain members, Clifford Thorne, General Counsel for the U. S. Grain Growers' Inc., the new farmers' co-operative grain marketing organization, spoke to 300 farmers in Omaha Friday afternoon and in no uncertain terms pointed out the defects of the present grain marketing system. He said that the greatest genuine grain marketing exchange in the United States had developed into the world's greatest gambling den. Mr. Thorne appeared upon an urgent invitation of the Nebraska Co-oper-

ative Grain and Livestock Association. He accepted an invitation to speak to the Lincoln Chamber of Commerce on April 30th.

To whom are you going to sell your Hay and Grain? The Harrington Mercantile Co. will offer the highest prices.

## SPECIALS

FOR SATURDAY ONLY

YOUNG MEN'S  
BLUE SERGE Suits \$16.<sup>50</sup>

A REGULAR \$25.00 VALUE

JUST RECEIVED

A NEW LOT OF

Boys TWO PANTS Suits

BELTED MODELS OF ALL  
WOOL ENGLISH TWEED  
A \$15.00 VALUE

EXTRA SPECIAL \$11.<sup>95</sup>

MEN'S AND BOY'S  
CAPS

A VARIETY OF STYLES AND  
COLORS

\$1.<sup>10</sup> to \$2.<sup>75</sup>

Where Low Price  
Meets  
Good Quality.

The Famous  
FOR VALUES

68r. Front & Dewey Sts.

### COMMISSIONERS' PROCEEDINGS.

The Board of County Commissioners met Monday, May 2, in the court house at North Platte, with Commissioners Springer, Cohagen and Coker and Co. Clerk Allen present.

The following claims were approved and allowed:

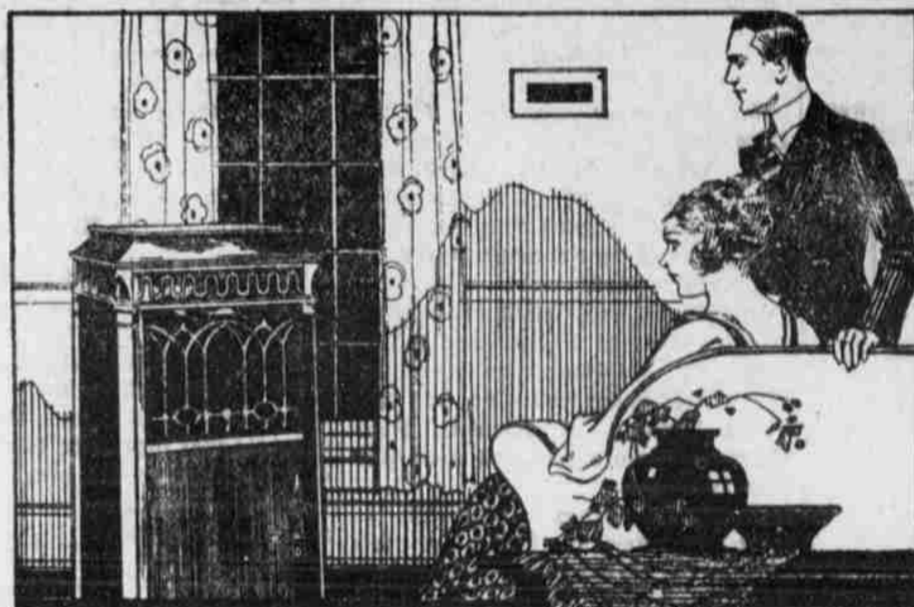
Harold Anderson, dragging, \$27.45.  
Ray Hodson, road work, \$130.  
W. M. LaRue, road work, \$86.75.  
Nelson & Sullivan, mdse., \$25.70.  
Virgie Thayer, labor, \$42.  
W. B. Salisbury, salary, \$150.  
L. J. Ford, patrolman, \$100.  
R. W. Schleicher, patrolman, \$100.  
D. W. Staple, patrolman, \$100.  
John Toillion, patrolman, \$100.  
Frank Coker, patrolman, \$100.  
R. B. Widner, patrolman, \$100.  
W. B. Salisbury, mileage, \$110.  
R. W. Schleicher, expenses, \$26.74.  
J. H. VanCleave, labor, \$14.19.  
E. A. Rishel, road dist. 9, \$61.65.  
J. D. Welch, supplies, \$44.20.  
E. A. Rishel, road dist. 8, \$79.05.  
Sundry persons surveying, \$100.60.  
Andy Hite, dragging, \$31.59.

L. E. Ludwig, engineman, \$60.  
John Schram, dragging, \$14.40.  
Derryberry & Forbes, supplies, \$17.60.  
Hendy-Ogier Auto Co., hire, \$10.  
N. P. Light & Power Co., \$72.85.  
Paul G. Meyer, office rent, \$25.  
C. W. Yost, office expenses, \$10.  
E. C. Hostetter, bridg work, \$36.  
J. I. Case Co., repairs, \$106.66.  
J. S. Davis Auto Co., repairs, \$34.41.  
A. W. Hoatson, labor, \$135.26.  
E. H. Dow, road dist. 46, \$15.  
National Refining Co., oil, \$49.65.  
A. D. Clinton, clock, \$5.  
Chas. Mason, road dist. 8, \$36.  
Henry Adams, dragging, \$27.  
Aileen G. Cochran, office expense, \$30.  
Adelaide Shilling, salary, \$85.  
Chas. Cohagen, dragging, \$24.  
Aileen G. Cochran, salary, \$175.  
Aileen G. Cochran, expenses, \$138.70.  
Standard Oil Co., oil, \$634.66.  
Aileen G. Cochran, expenses, \$50.53.  
Sundry persons road dist. 32, \$42.  
Chas. R. White, supplies, \$21.22.  
Fred McCaig, hauling, \$225.  
Martin Wyman, labor, \$25.85.

Derryberry & Forbes, supplies, \$1.  
C. C. Carleton, labor, \$150.  
T. M. Cohagen, services and mileage, \$186.78.  
O. M. Sholy, blademan, \$150.  
A. H. Terrell, engineman, \$150.  
H. Huckfeldt, road dist. 30, \$3.  
Roy E. Dalton, road work, \$150.  
A. J. Colby, road dist. 27, \$20.70.  
Wm. Heyse, salary, etc., \$130.55.  
Wm. H. C. Woodhurst, salary, \$208.33.  
T. S. Blankenburg, services, \$95.  
Roy Wilson, salary, \$125.  
A. J. Salisbury, salary, \$166.  
A. G. Stack, dragging, \$36.  
Geo. Rogers, rent Co. poor, \$10.  
Sundry persons, dragging, \$51.  
Geo. Schrecongost, labor, \$94.  
Wm. Ritner, salary, \$125.  
A. S. Allen, salary, \$233.33.  
Clarence McNeel, labor, \$50.  
Geo. Winslow, services, \$5.  
Chas. Leypoldt, engineman, \$146.  
S. & R. Service Station, supplies, \$65.65.  
A. J. Salisbury, board of prisoners, \$96.55.  
A. J. Salisbury, mileage, \$287.55.  
A. J. Salisbury, jailor fees, \$135.  
A. J. Salisbury, office expenses, \$43.98.  
O. R. Stevens, care of Blakely, \$21.  
R. B. Weidner, labor, \$20.  
Tom Karr, haying roads, \$8.40.  
Frank Preitauer, haying roads, \$18.40.  
J. H. Hatchin & Co., lumber, \$19.15.  
Lola E. Wyman, refund of tax, \$24.91.  
B. R. Merrill, road dist. 21, \$30.55.  
D. E. Raney, refund of tax, \$6.50.  
Annie Coffett, right of way, \$100.  
Corner Garage, oil, \$5.75.  
E. H. Springer, services and mileage, \$201.20.  
H. Coker, services and mileage, \$158.90.  
Chas. R. White, road dist. 5, \$4.61.  
Oscar Lemkoden, dragging, \$8.  
Wallace Winner, printing, \$34.88.  
Farm Bureau, salary, \$396.91.  
H. S. Kariger, freight, \$26.73.  
Geo. Kariger, dragging, \$29.50.  
Board adjourned to May 19, 1921.

### PLAYER PIANO AT SACRIFICE PRICE

We have a strictly high grade player piano in storage in North Platte. No reasonable offer refused for quick disposal. Easy terms if responsible. Write at once if interested to the Denver Music Company, Denver, Colorado.



What we do for homes that buy

## The NEW EDISON

"The Phonograph with a Soul"

AFTER you've bought, what then?

Will you be able to get the selections you like best? Will you have an expert to look after your instrument regularly and keep it tuned year after year? Will you have a music organization interested in helping you get every enjoyment out of your instrument?

You will,—if you buy your New Edison from us.

Our business is helping people find true musical enjoyment. Equipping their homes with New Edisons is only one step in the process. Serving their homes with Edison after-service is the other step.

We give this service, every time we sell a New Edison. Remember,—the two together bring the music you want in your home.

## Dixon Music Shop.

### Get Your Copy

of "What Edison Likes in Music." Use our Edison Requisition Blank. Find out which are Mr Edison's 25 favorite tunes. Note his views on listening to music. See if you have the six selections he thinks every home should possess. Remember, too, that we carry complete stock of the RE-CREATIONS Mr. Edison has picked.

### Edison Requisition Blank

Bring or send. Entitles you to copy of "What Edison Likes in Music." No charge or obligation.

Name \_\_\_\_\_  
Address \_\_\_\_\_

## Mutual Building & Loan Association of North Platte.

INCORPORATED IN 1887.

Resources \$1,370,427.14.

### SAFETY FIRST.

Investors in this association get the benefits of the following requirements of the laws of Nebraska under which it is operating:

First. The association is required to invest only in first mortgages on real estate or the stock of this association.

Second. Such investments are non-negotiable and non-assignable, and can only be discharged by payment direct to the association. This is a very important protection not available to any financial institution except Building & Loan Associations.

Third. The association is subject to the supervision of the State Banking Board.

How well the interests of the investors in this association have been safeguarded is evidenced by the fact that in the more than thirty three years of its operation not one dollar has been lost.

T. C. PATTERSON, President. BESSIE F. SALISBURY, Secretary.