

**EASTER DAY FASHION PARADE AT ATLANTIC CITY**



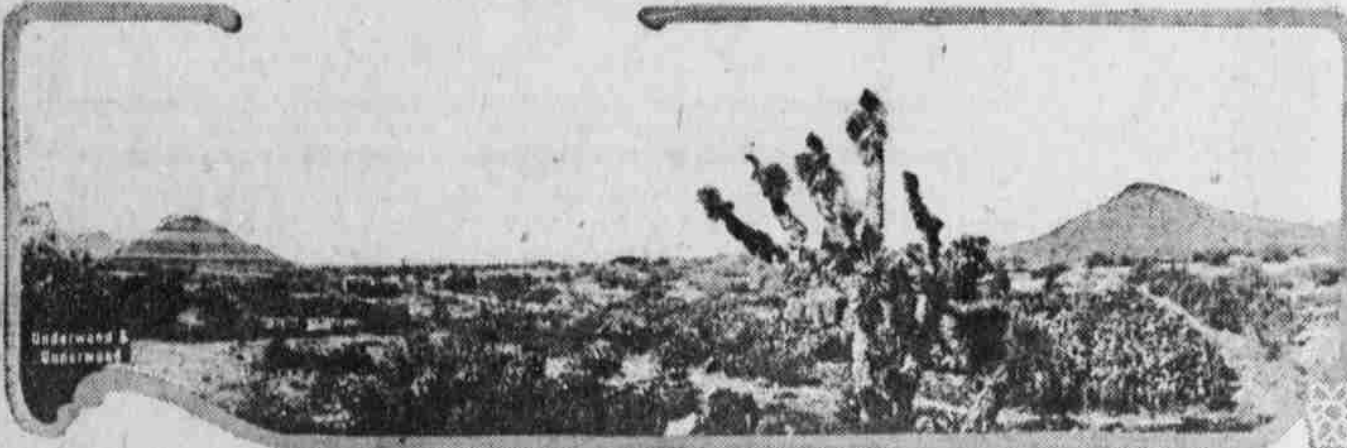
The boardwalk at Atlantic City is the mecca for the well dressed on Easter Sunday.

**COULDN'T MEET EXORBITANT RENT DEMANDS**



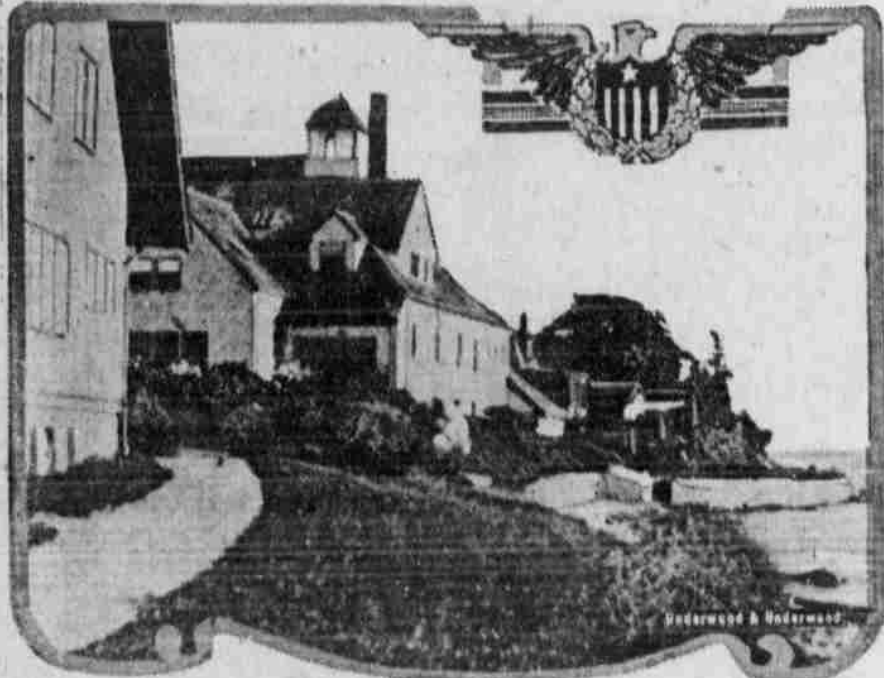
View taken in Brooklyn showing the furniture of an evicted tenant who was unable to pay the high rent demanded by his landlord.

**PYRAMIDS OF THE SUN AND MOON**



Panoramic view of the historic pyramids of the sun and moon at San Juan Teotihuacan, 30 miles from Mexico City. A newly discovered pyramid in the same vicinity is now being opened.

**SUMMER WHITE HOUSE AT WOOD'S HOLE**



View taken from the grounds of the Charles R. Crane estate, showing a portion of the building and a view of Vineyard sound.

**DIPLOMATS SNAPPED IN WASHINGTON**



Henry Morgenthau, new ambassador to Mexico, with Balubridge Colby, secretary of state, and Frank L. Polk, undersecretary. Mr. Morgenthau was formerly ambassador to Turkey.

**PUBLIC HEALTH WORKER**



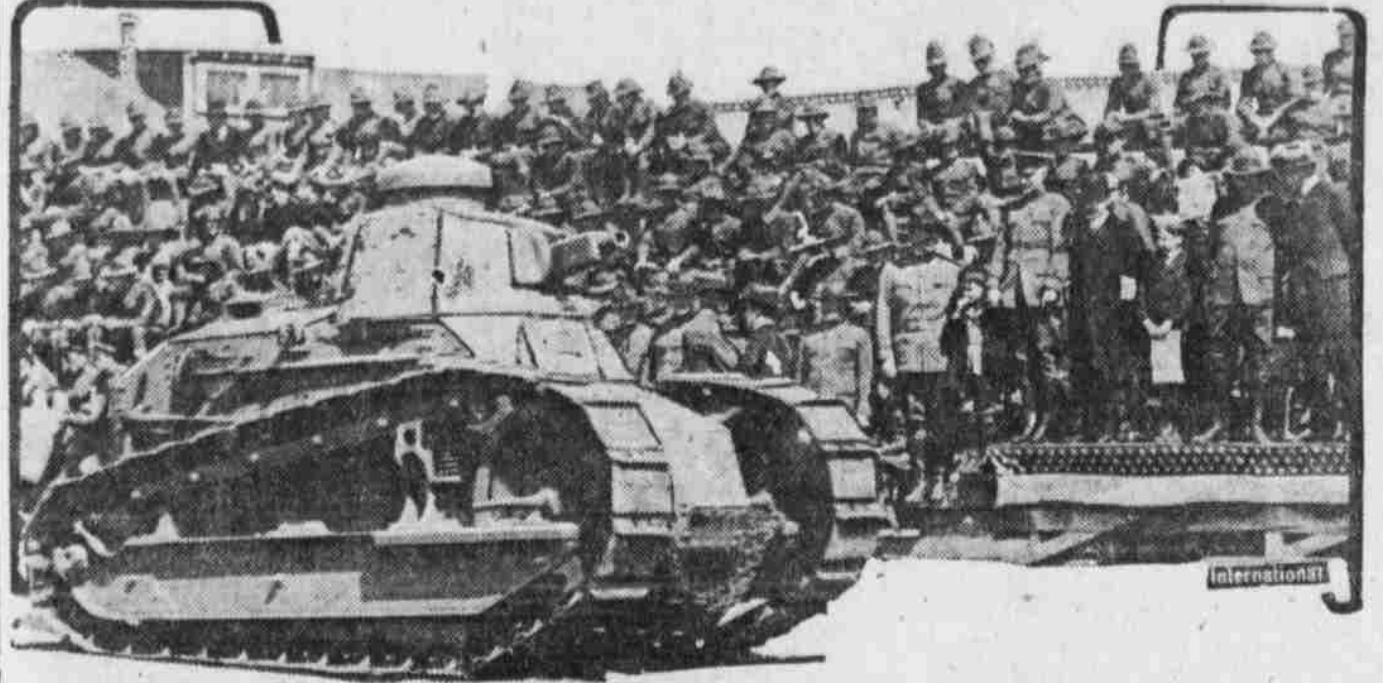
Miss Emily Greer of Columbus, O. who has accepted a responsible position with the United States public health service in Nebraska.

**GEN. W. W. HARTS**



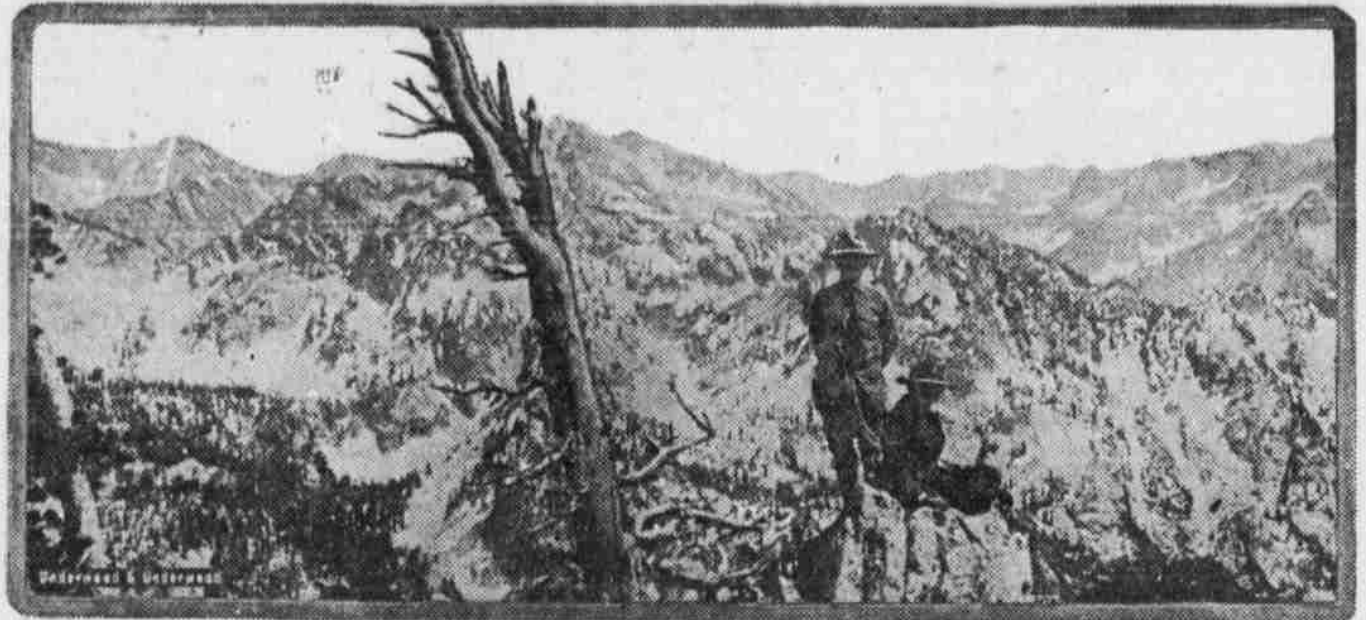
General Harts for the last nine months chief of staff of the army of occupation in Germany, recently arrived in Washington to testify in the case of Capt. "Hard-Boiled" Smith, accused of brutal treatment of men in prison camps in France.

**SECRETARY OF WAR INSPECTS TANK CORPS**



Units of the Tank corps at Camp Meade passing in review before Secretary of War Baker, General March, General Hutchison, General Hines and other leading army men during the field day maneuvers and inspection.

**VIEW IN PROPOSED SAWTOOTH NATIONAL PARK**



E. Grandjean, forest supervisor of the Boise forest in Idaho, looking over the proposed Sawtooth National park in the Sawtooth mountains. He was accompanied on this tour by Otto M. Jones, state game warden of Idaho, and Mrs. Jones, who is shown in the photograph.

**CARRIES WEIGHT ALMOST EQUAL TO ITS OWN**



View of the Thomas Morse mail plane which recently accomplished a feat long the dream of aviation pioneers, when with a useful weight almost equal to its own, it gracefully left the snow and slush at Ithaca, N. Y. The craft is a biplane evolved and produced by the Thomas Morse Aircraft corporation. Its weight empty is 2,800 pounds. Its weight loaded is 5,500 pounds. Thus its useful load is 2,710 pounds, or only 280 pounds less than the weight of the craft. Many planes carry less than half their weight.

**USE FOR CELLARETTE**

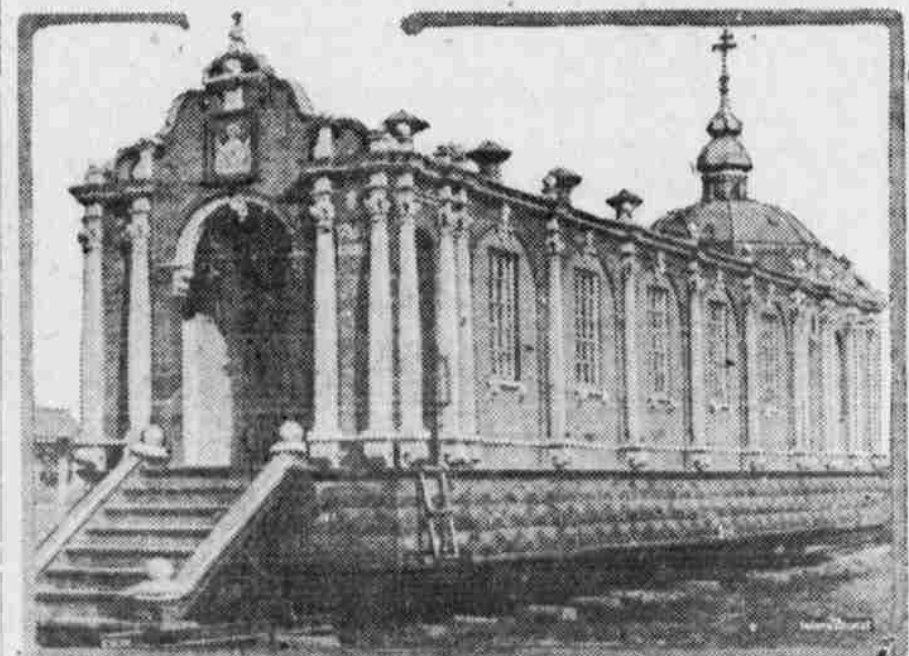


When prohibition came on, Mr. E. J. McMullin, a Philadelphia artist, found a very good and antique cellarette on his hands. He purchased necessary parts of a phonograph and converted the cellarette into an excellent talking machine which now dispenses grand opera or jazzy music instead of wine.

**Easy for Autoists.**

Keeping the radiator of his parked car from freezing is the least of troubles to the autoist of London, Ontario, says Popular Mechanics Magazine. By paying a fat fee for the season he obtains a key which unlocks the covers of electric sockets attached to terminal boxes, mounted on posts at frequent intervals along the streets of the city. A small electric heater with a long cord is carried in the car and connected to the street box by simply inserting a plug. Not only is the car's circulatory system safeguarded, but its interior is kept comfortable during the owner's absence.

**RELIGION ON WHEELS IN ROUMANIA**



This is the famous church on wheels which followed the Roumanian army during the invasion of Hungary. It was used as a dressing station on many occasions by American Red Cross doctors caring for wounded in the Roumanian ranks. It is built on standard passenger coach frame, and is still used.

**SEA SLED MAKES 43 MILES AN HOUR**



A 32-foot standard navy sea sled running at 43 miles per hour. Two of these boats ran from Boston to Bay Shore, Long Island, a distance of 250 miles against a 25-mile head wind in eight hours, five minutes, an average speed of 32 miles per hour. This performance completely out-classed that of any other motor boat of similar size made under similar weather conditions.