

**IF BACK HURTS USE SALTS FOR KIDNEYS**

Eat less meat if kidneys feel like lead or bladder bothers.

Most folks forget that the kidneys, like the bowels, get sluggish and clogged and need a flushing occasionally, else we have backache and dull misery in the kidney region, severe headaches, rheumatic twinges, torpid liver, acid stomach sleeplessness and all sorts of bladder disorders.

You simply must keep your kidneys active and clean, and the moment you feel an ache or pain in the kidney region, get about four ounces of Jad Salts from any good drug store here, take a tablespoonful in a glass of water before breakfast for a few days and your kidneys will then act fine. This famous salt is made from the acid of grapes and lemon juice, combined with lithia, and is harmless to flush clogged kidneys and stimulates them to normal activity. It also neutralizes the acids in the urine so it no longer irritates, thus ending bladder disorders.

Jad Salts is harmless; inexpensive; makes a delightful effervescent lithia-water drink which everybody should take now and then to keep the kidneys clean, thus avoiding serious complications.

A well-known local druggist says he sells lots of Jad Salts to folks who believe in overcoming kidney trouble while it is only trouble.—Adv.

**No Use.**

"Do you question my knowledge?" "Why, no, sir. That wouldn't answer."

**\$100 Reward, \$100**

Cataract is a local disease greatly influenced by constitutional conditions. It therefore requires constitutional treatment. HALL'S CATARRH MEDICINE is taken internally and acts through the blood on the mucous surfaces of the system. HALL'S CATARRH MEDICINE destroys the foundation of the disease, gives the patient strength by improving the general health and assists nature in doing its work. \$100.00 for any case of Cataract that HALL'S CATARRH MEDICINE fails to cure. Catarrh Druggists, Inc. Testimonials free. F. J. Cheney & Co., Toledo, Ohio.

**A Plea.**

"I have always maintained that alcohol is a food." "Me, too. Could you help a starving man?"



A WELL-KNOWN INSTITUTION.

Probably no institution in America is more widely known than Doctor Pierce's Invalids' Hotel in Buffalo, N. Y. Although established many years ago it is today a modern sanitarium, having all the latest facilities for the correct diagnosis of diseases and their successful treatment through medicine or surgery.

It was Dr. Pierce, its founder, who over 50 years ago gave to the world that wonderful stomach tonic and blood purifier, "Golden Medical Discovery," and that famous non-alcoholic medicine for women, "Favorite Prescription."

In his early professional career, Dr. Pierce realized that every family, but especially those who live remote from a physician, should have at hand an instructive book that would teach them something about First Aid, Physiology, Anatomy, Hygiene; how to recognize different diseases, how to care for the sick, what to do in case of accident or sudden sickness, etc., so he published that great book, the "Medical Adviser," an up-to-date edition of which can be procured by sending 50 cents to Doctor Pierce's Invalids' Hotel in Buffalo, N. Y.

Later, Dr. Pierce added another link to his chain of good works by establishing a bureau of correspondence to which any one can write for medical advice, without any expense whatever, and if necessary, medicines especially prepared in Doctor Pierce's Laboratory will be sent by parcel post or express for use at home, at a reasonable cost. Thus those who have symptoms of disease need not suffer mental agony fearing that they have some serious ailment, but can have a diagnosis made free by a physician of high professional standing. Write to Dr. Pierce relating your symptoms if you need medical advice for any chronic disease. All letters regarded as confidential.

**SQUEEZED TO DEATH**

When the body begins to stiffen and movement becomes painful it is usually an indication that the kidneys are out of order. Keep these organs healthy by taking

**GOLD MEDAL BARLEIN OIL CAPSULES**

The world's standard remedy for kidney, liver, bladder and uric acid troubles. Famous since 1896. Take regularly and keep in good health. In three sizes. All druggists. Guaranteed as represented. Look for the name Gold Medal on every box and accept no imitation.

**FRECKLES**

WE START YOU in business worth \$7,000 per year. Write for particulars. Fual Savings Co., 1427 N. Seventh St., Springfield, Ill.

**PLAN INCREASED EGG PRODUCTION**

Marked Attention Should Be Paid to Feeding, Housing, Culling and Breeding.

**BREEDING FLOCK ESSENTIAL**

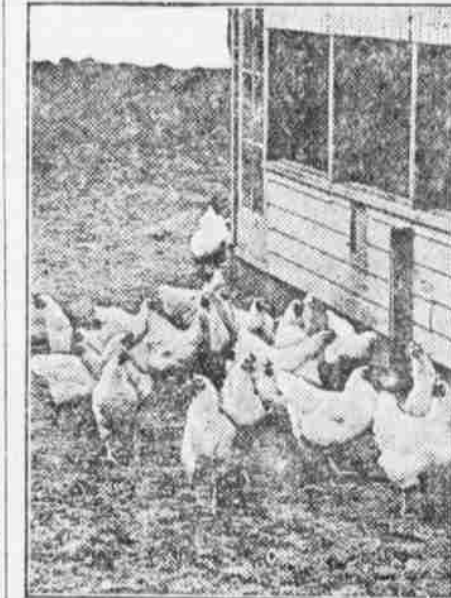
Free Range Gives Ideal Conditions for Fowls—Close Confinement Reduces Vitality of Stock—Mash Hoppers Favored.

Poultry keepers interested in increasing the egg production of their flocks will pay marked attention to the methods of feeding, housing, culling and breeding. Probably the least progress on most farms has been made in the art of breeding poultry, says T. S. Townsley of the University of Missouri College of Agriculture, in Extension Circular 72.

To produce high layers only the best individual producers should be used as breeders. This suggests the necessity for having a special breeding flock. On farms where eggs for setting are saved from the entire flock, selection is usually based only on the size and shape of the eggs. With this system the breeder stands a good chance of setting many eggs from the very lowest producers. Even the poorest hens lay fairly well during the hatching season and their eggs are usually large and smooth. This method of mass selection of setting eggs is in the same class as the crib selection of seed corn and will bring just as poor results. The first step in improving the egg production is the establishment of a special breeding flock.

Free Range Is Ideal. No special fencing is necessary to handle the flock. Free range gives ideal conditions for breeding fowls. A pen is a great detriment to the efficiency of the breeding flock and is not at all needed on the farm. Close confinement reduces the vitality of the flock and results in poor hatches and weak chicks.

Where separate houses are available for the breeding flock and the commercial flock, free range can be given the birds in each group. If feed is kept constantly available in the mash hoppers in each house the birds will so that the eggs can be kept separate without any attention to yards. Of course, males should be supplied only for the breeding flock, and by keeping these birds in the house until eight or nine o'clock in the morning, satisfactory mating will be insured. Some



Utility and Quality Are Combined in Fowls of This Kind.

mating may occur on the range between the hens in the commercial flock and the males from the breeding flock, but this does no special harm. On farms where there is only one poultry house, a partition can be put in to keep the two flocks separate. If it seems undesirable to allow both flocks to range at the same time, alternate the range by letting the breeders run at large one day, and the commercial layers the next. During the cool weather of the breeding season this system works satisfactorily.

Number of Breeders. The number of birds to include in the breeding flock should be determined by the number of high-class individuals available and by the number of eggs needed for hatching. If incubators are used, enough breeders should be kept to fill the machines without holding any eggs longer than two to twelve days. Usually a production of at least 50 per cent can be expected during the hatching season. Forty breeders should furnish enough eggs to fill a 200-egg machine within ten days. However, only hens of high producing ability should be used as breeders even if it is necessary to buy some eggs for hatching.

**LARGER YIELDS OF ALFALFA**

Practically Double the Amount of Clover Hay Obtained in Tests at Wisconsin Station.

Trials conducted on the Wisconsin experiment station farm at Madison show that alfalfa gives yields practically double that of clover hay and three times as much as timothy. An acre of alfalfa produced in a single season three times as much protein as an acre of clover and nine times as much as an acre of timothy.

**PRODUCERS BENEFIT BY MEAT INSPECTION**

Foreigners Insist on Federally Inspected Product.

Possible to Obtain Detailed Records of Conditions of Animals at Time of Slaughter—Diseases Can Be Traced.

(Prepared by the United States Department of Agriculture.)

"Contrary to the common belief that meat inspection is conducted principally for consumers, it has a side which is of direct help to live stock producers," says the chief of the bureau of animal industry. "In the first place, the bulk of our foreign trade in meats depends almost entirely on the federal meat-inspection service. Most foreign governments will not accept meat that has not been federally inspected. Inspection of import meats,



Inspectors at Work on Regular Post-mortem Examination.

accompanied by rejection of meat products not entitled to entry, is of course a factor in our domestic market.

"Through the federal meat-inspection service it has been possible to obtain very detailed records of conditions of animals at time of slaughter. These records show clearly whether certain animal diseases are on the increase or decrease, and, through a system known as field inspection, centers of infection have in numerous cases been found and wiped out.

"Of course, the main benefit of federal meat inspection to producers is the confidence of the American public in inspected meats, and it is noteworthy that the average per capita consumption of meats has increased as the meat-inspection service has been extended."

**BENEFITS OF SWEET CLOVER**

Crop Makes Valuable Feed for Live Stock and Enriches Soil by Adding Humus.

The northwest experiment station at Crookston, Minn., strongly recommends the growing of sweet clover on a more extensive scale than heretofore. A recent statement issued at the station says:

"Sweet clover is not only one of the greatest soil enrichers, but is a valuable feed for live stock. It adds humus to the soil, because of the depth to which the roots penetrate and the ease with which they decay. Land that has been cropped with sweet clover which has been inoculated will grow a better stand of alfalfa without further inoculation. "Sweet clover is commonly sown with a nurse crop. It is more easily plowed up than alfalfa. It is a good cash crop when grown for seed, and should be tried at least on a small scale by every farmer."

**DISPOSITION OF DEAD FOWLS**

Carcasses of Birds Should Not Be Allowed to Lie Around and Decay—Burning Is Best.

Never allow the carcasses of birds that have died to lie around and decay. Either bury them good and deep or, better still, burn them. If you have no furnace or stove in which you want to burn them, saturate them good with kerosene and set fire to them. If you leave them uncovered and allow them to decay, your whole flock is liable to be stricken with limberneck.

**DEEP SOIL HOLDS MOISTURE**

Main Agent by Which Roots of Plants Get Their Food—Aeration Also Is Essential.

A deep soil is conducive to maximum crop production. It will hold more moisture, and when this is exhausted will draw the moisture from the subsoil. Since moisture is the main agent by which the roots of plants get their food it is necessary that the soil be deep to get the best results. By plowing a deep soil it will be pulverized and aerated, which is also necessary for a good root growth.



**FARM POULTRY**

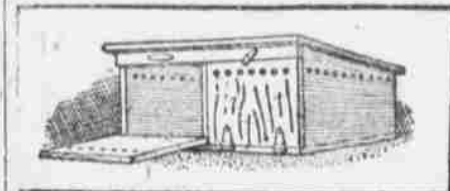
**BROOD COOPS FOR CHICKENS**  
Directions Given for Construction of Cheap and Effective Pens for Little Chicks.

The accompanying drawing gives an idea of how quickly and cheaply any number of brood compartment coops can be constructed. It shows only two sections, but any desired number can be put together, saving material. We suggest that only three at the most be united, as they are easier handled when desiring to remove to new quarters, says a writer in an exchange.

The one section shows the door closed and button turned to hold lid up at night. The other section shows the door down for daytime to allow the hen and young free range in the orchard or pasture, wherever the coops may be located.

A very convenient size both for cutting material and the handling of completed coop has been found to be as follows: Twenty-four inches high in front, 18 inches high at rear, 18 inches deep from front to back. One-inch holes can be bored at each end and a line of them through the top of the door, as indicated by the closed door in drawing. Also, if the roof boards are allowed to project over back wall several inches it is not a bad idea to bore a few holes in the back wall. Some farmers have been very thoughtful and constructed similar coops during the cold, wet, steely weather the last winter when nothing in the field could be done, and they are ahead much when the fields demand so much time and attention at this season.

Shingles or prepared roofing, whatever is convenient, will make an ideal



Homemade Brooders.

covering for the roofs. We have seen where a farmer having a half dozer such constructed coops used galvanized iron from an old shed in tow that he obtained for the hauling.

**AVOID HIGH-FLAVORED FEEDS**

Onions Have Been Fed in Sufficient Quantities to Affect Eggs—Color of Yolk Influenced.

In extreme cases the flavor and odor of the feed have been imparted to the egg. Onions have been fed in sufficient quantity to bring about this effect. Those who desire to market a first-class article should not give feeds of high and objectionable flavor to their flocks.

In no case should tainted feed be allowed to enter the ration. Feed also has an influence on the color of the yolk, according to the United States department of agriculture. Corn fed exclusively will give a deep yellow or highly colored yolk, while wheat feed alone will produce a much lighter yolk. A fairly high-colored yolk is usually preferred and can usually be obtained by feeding a moderate amount of corn. Plenty of green feed also enriches the color of the yolk.

**DO NOT OVERCROWD POULTRY**

Few Hens in Small Yard Do Better Than Larger Number in Same Space—Room for Each.

Better results will be obtained from a few hens in a small yard than from a larger number in the same yard. The backyard poultry flock rarely will consist of more than 20 to 25 hens, and if many cases only a half-dozen hens are kept. For a flock of 20 to 25 hens a space of not less than 25 by 30 feet is required. From 20 to 30 square feet per hen should usually be allowed.

**LARGE BREEDS GROW SLOWLY**

Brahmas and Cochins Are Profitable Where There Is Demand for Heavy Fowls.

The biggest breeds of poultry, like Brahmas and Cochins, grow more slowly than the medium-sized breeds and therefore are not ready for market as soon, but they weigh more and are profitable where the market demands a large-sized fowl.

**NEEDED EXERCISE BY FOWLS**

Hens Can Be Kept Busy by Scattering Grain in Litter on Dry and Clean Floor.

Be sure that the floor of the henhouse is dry and reasonably clean and covered with three or four inches of clean litter in which grain can be scattered so that the fowls can obtain exercise scratching for it.

**WRIGLEYS**

Here's to teeth, appetite, digestion!

The flavor lasts—and the electrically-sealed package brings

**WRIGLEYS** to you with all its goodness perfectly preserved.

Sealed Tight—Kept Right!

UNITED STATES PATENT OFFICE  
A11

WRIGLEY'S JUICY FRUIT CHEWING GUM THE FLAVOR LASTS

WRIGLEY'S DOUBLEMINT CHEWING GUM PEPPERMINT

WRIGLEY'S SPEARMINT CHEWING GUM THE PERFECT GUM MINT LEAF FLAVOR

**E-Z STOVE POLISH**

Save time and hard work by using E-Z Stove Polish; absolutely dustless, smokeless, odorless; gives a durable — ebony-black shine.

Try a 15c box of E-Z Oil Shoe Polish. All colors and white. It saves the leather and prevents cracking. Don't risk cheap polish. To open box just lift the latch.

**E-Z SHOE POLISH**

MARTIN AND MARTIN  
ESTAB. 1882  
CHICAGO

**Nebraska Directory**

OMAHA FIXTURE & SUPPLY CO.  
S. W. Cor. 11th and Douglas Sts., Omaha, Neb.  
Mfrs. of MODERN STORE, OFFICE and BANK FIXTURES  
Phone Douglas 374. All we ask is a chance to bid.

**Hotel Castle**  
632 S. 16th Street  
Omaha, Neb.  
New, absolutely fireproof.  
300 ROOMS  
With private toilet \$1.25;  
with private bath \$1.75 to \$2.50  
FRED A. CASTLE, Proprietor

**Expert Radiator Repairers**  
New Cores Installed  
We make 'em — We sell 'em  
We repair 'em  
OMAHA AUTO TINNERS  
Telephone Douglas 3564  
2107 1/2 Farnam St., Omaha

**DR. BRADBURY, DENTIST**  
30 YEARS IN OMAHA. Painless Dental Work guaranteed 10 years. Fillings, Crowns, Bridge-work, Plates and Extracting. Home treatment for Gum Diseases, tightens teeth and preserves health. It will pay you to come for this Quality Work. Send for Booklet.  
921 WOODMEN OF WORLD BUILDING, OMAHA, NEB.

**"Hatching Dollars"**  
is a book that tells you how money makes money—it tells you about high-class securities from which big men get their incomes—how you can buy these same securities by small payments. Send for your free copy today to  
Investment Department  
MORGAN, LIVERMORE & CO.  
71 Broadway New York City  
(Members N. Y. Stock Exchange)

**Ladies Let Cuticura Keep Your Skin Fresh and Young**  
Soap 25c, Ointment 25 and 50c, Talcum 25c.

**PARKER'S HAIR BALSAM**  
Removes Dandruff—Stops Hair Falling  
Restores Color and  
Beauty to Gray and Faded Hair  
Sole and Mfg. at drug stores,  
Hibcox Chem. Wks., Paterson, N. Y.

**HINDERCORNS** Remove Corns, Calluses, etc., stop all pain, restore comfort to the foot, make walking easy. See by mail or at drug stores. Hibcox Chemical Works, Paterson, N. Y.

**PATENTS** Watson E. Coleman, Patent Lawyer, Washington, D. C. Advice and book free. Rates reasonable. Highest references. Best service.