

SQUEEZED TO DEATH

When the body begins to stiffen and movement becomes painful it is usually an indication that the kidneys are out of order. Keep these organs healthy by taking **GOLD MEDAL MARBLE OIL CAPSULES**



LOOK HERE
Fix It Yourself
For 40c

By sending to us for a can of **BALL'S An-Ti-Le-Ko**

The Faultless Radiator Cement. One can will positively stop all small leaks in any Auto, Truck or Tractor Radiator, Cap, Jacket or Cylinder Block in 20 minutes. It does not clog and it is perfectly harmless. It is a permanent repair. If your dealer does not have it, upon receipt of 40 cents we will mail a can to any address.

Made in DETROIT, MICH., by **BALL PRODUCTS CO.**
115 Grand River Ave.
Successors used at all Ford Stations.
Dealers requested to write for retail agency.

PARKER'S HAIR BRASAM
Removes Dandruff, Itching, Scaling, Restores Color and Brings to Gray and Faded Hair its former color and luster. Sells at 50c per bottle. Dr. C. H. Barry, 237 1/2 Michigan Ave., Chicago, Ill.

HINDERCORNS Remove Corns, Callosities, etc. Apply all pain, ensures comfort to the foot. Making walking easy. 25c. By mail or at drug stores. **Hiscox Chemical Works, Patagonia, N. Y.**

FORD OWNERS
Don't Crank Your Heads Off
Start your car in coldest weather first turn over with "One Minute Manifold Heater." Sent postpaid \$1.00. Satisfaction guaranteed or money refunded.
CARD-HAWKINS CO., Franklin, Neb.

DANCING--FREE

Be an expert dancer. Learn at home. My new, wonderful, illustrated method of dancing. Send \$1.50 for Waite. I will give free One-Step and Fox-Trot with every order. Send for free booklet on Dancing.

PROF. G. ERICKSON
P. O. Box 822 Joplin, Mo.

PATENTS **Watson E. Coleman**, Patent Attorney, 111 N. 2nd St., Omaha, Neb. Drafts, U. S. Advice and book free. Rates reasonable. Highest references. Best services.

FRECKLES POSITIVELY REMOVED by Dr. Barry's Freckle Eliminator. Sent by mail. Dr. C. H. Barry, 237 1/2 Michigan Ave., Chicago, Ill.

W. N. U., OMAHA, NO. 2-1920.

Nebraska Directory

Hess & Swoboda FLORISTS
Special attention to outside orders for floral designs by mail or express. Quick service 1615 FARNAM ST., OMAHA, NEBRASKA

OMAHA PIPE CO.
Importers and Jobbers
PIPES AND SMOKERS' SUPPLIES
EXPERT PIPE REPAIRING
1503 Howard Street, Omaha, Neb.

VAN ARNAM DRESS PLEATING & BUTTON CO.
412-17 Paxton Block, Omaha, Neb.
Accordions, knife, side, space, box, number and combination, leather, hemstitching, piecing, edging, pinking, ruffling, covering buttons, all styles and sizes. Price list free.

Creamery and Cream Station Supplies
Milk Bottles and Dairy Supplies; Egg Cases and Chicken Coops
KENNEDY & PARSONS CO.
1309 Jones St. 1901 E. 4th St. OMAHA, NEBRASKA

LEE W. EDWARDS CHIROPRACTOR
N. E. Cor. 24th and Farnam Sts. OMAHA, NEB.
Telephone Douglas 945
Night telephone Harney 5791
LADY ATTENDANT

Hoteloyal, Omaha
Take Dodge Street Car From Stations
ABSOLUTELY FIREPROOF
Rates \$1.50 up without bath. \$1.75 up with bath.
The Hotel With a Reputation
MOUSTOUN R. HARPER—Proprietor—CHAS. J. KRILL

IT PAYS TO SHIP CREAM DIRECT
ALFALFA BUTTER CO., OMAHA
Ask us to put your name on our quotation list that you may compare our prices with others

A Bad Cough
If neglected, often leads to serious trouble. Satisfy your health, relieve your distress and soothe your irritated throat by taking
PISCO'S

Thousands Have Kidney Trouble and Never Suspect It

Applicants for Insurance Often Rejected.

Judging from reports from druggists who are constantly in direct touch with the public, there is one preparation that has been very successful in overcoming these conditions. The mild and healing influence of Dr. Kilmer's Swamp-Root is soon realized. It stands the highest for its remarkable record of success. An examining physician for one of the prominent Life Insurance Companies, in an interview on the subject, made the astonishing statement that one reason why so many applicants for insurance are rejected is because kidney trouble is so common to the American people, and the large majority of those whose applications are declined do not even suspect that they have the disease. It is on sale at all drug stores in bottles of two sizes, medium and large.

Never permit a costive tendency to develop into a habit; but if the habit exists have recourse to once to Garfield Tea.—Adv.

A Resemblance.
"A certain Buddhist priest is said to have been eight years on his way from Peking to Lhasa, and confidently expects to complete his journey in about eight years more," related Professor Pate. "He travels in this wise: He lies at full length on the ground with his arms outstretched beyond his head, then gets up, walks to the mark he scratched with his fingers, prostrates himself as before, measures again, and so on. He—"

"Eh-yop!" interrupted old Dorsey Dudgeon. "He probably progresses with almost the lightning-like rapidity that does my brother-in-law when he is telling what he said to the feller in 1878 and what the feller said to him, and so forth."—Kansas City Star.

BREAKS YOUR COLD IN JUST A FEW HOURS

"Pape's Cold Compound" instantly relieves stiffness and distress

Don't stay stuffed-up! Quit blowing and snuffling! A dose of "Pape's Cold Compound" taken every two hours until three doses are taken usually breaks up a severe cold and ends all gripe misery.

The very first dose opens your clogged-up nostrils and the air passages of the head; stops nose running; relieves the headache, dullness, feverishness, sneezing, soreness and stiffness. "Pape's Cold Compound" is the quickest, surest relief known and costs only a few cents at drug stores. It acts without assistance, tastes nice, contains no quinine—insist upon Pape's!—Adv.

Classic Discontent.
"That's a pretty good little speech of yours, Frank," said Manager Shakespear, as Judge Bacon slipped into the stage entrance with another bunch of manuscript.

"Which one is that?"
"The one beginning, 'To be or not to be.' But it is incomplete."
"But I have mentioned the oppressors' wrongs and love's pangs, and legal delays and all that sort of thing."
"Yes. But you don't carry out the thought. You don't say a word about shorter hours and more wages."

SHE THOUGHT DRESS WOULD LOOK DYED

But "Diamond Dyes" Turned Her Faded, Old, Shabby Apparel Into New.

Don't worry about perfect results. Use "Diamond Dyes," guaranteed to give a new, rich, fadeless color to any fabric, whether it be wool, silk, linen, cotton or mixed goods.—dresses, blouses, stockings, skirts, children's coats, feathers, draperies, coverings—everything!

The Direction Book with each package tells how to diamond dye over any color.

To match any material, have dealer show you "Diamond Dye" Color Card.—Adv.

In Hopeless Mood.
"Is your family trying to economize on clothes?"
"Can't be done," declared Mr. Grovcher. "The less material they put in gowns the more they appear to cost."

Don't Forget Cuticura Talcum
When adding to your toilet requisites. An exquisitely scented face, skin, baby and dusting powder and perfume, rendering other perfumes superfluous. You may rely on it because one of the Cuticura Trio (Soap, Ointment and Talcum). 25c each everywhere.—Adv.

Distinction of Grammar.
"Does your wife play bridge still?"
"No," replied Mr. Meekton; "not if by 'still' you mean 'silent.'"

Chronic Constipation is as dangerous as disagreeable. Garfield Tea cures it.—Adv.
Even real estate men occasionally build castles in the air.

EUROPEAN BORER IS DESTRUCTIVE

Estimated Loss of Million Dollars Daily if Insect Once Gets Established.

FOUND IN EASTERN STATES

Larva is Dirty White Caterpillar. About One Inch Long, With Brown Head—Ears of Corn Are Bored Through.

A million dollars' worth of damage a day is conservatively estimated as the effect of the European corn borer if it once gets established in the corn belt of the United States. This is the statement of George A. Dean, head of the entomology department in the Kansas State Agricultural college.

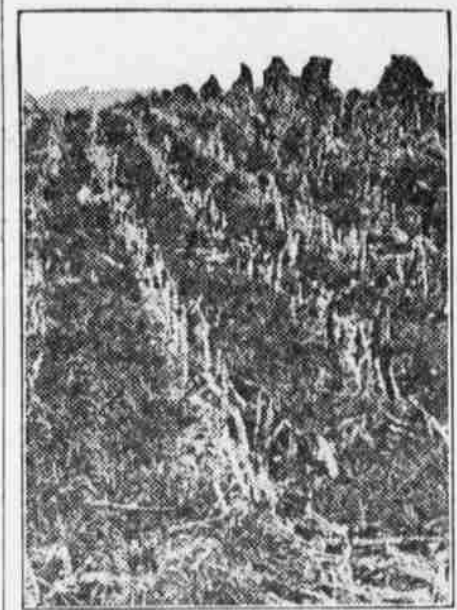
The insect, which has done tremendous damage in Europe and Asia, has been introduced into New York and Massachusetts and is looked for in other regions.

Larva is White Caterpillar.
The larva of the European corn borer is a dirty white caterpillar, about an inch long, with a brown head. It passes the winter in a nearly full-grown condition within its food plants. In the spring its growth is completed and it then bores its way to the surface of the food plant, where it makes a slight hole to serve as an exit for the resulting moth.

The larva now forms a cocoon in the burrow, passes into the pupal stage, and in about two weeks the adult moth emerges. The moth, which lives about two weeks, deposits 300 to 700 eggs on the food plant. In about five days the eggs hatch, and the young larvae at first feed on the tender shoots of the plants, but finally bore their way into the main stem of the plant. In about six weeks, after burrowing through all parts of the plant, the larvae pupate as before and emerge as moths about the middle of summer.

The female moths of the second brood do the greatest damage to corn, since they attack not only the stalk, but also the tassel and the ear, and continue feeding until cold weather.

Destroy Ears Completely.
The ears of corn are bored through from bottom to top and from side to side, the borers feeding on the kernels while they are soft. Complete de-



A Good Harvest of Corn, With Good Organic Matter Left, Which, if Plowed Under, Will Make Next Crop a Better One.

struction of the ear is generally accomplished either by the borer or through decay which follows the injury. One moth which emerges in the spring may be responsible for from 100,000 to 200,000 larvae later in the same season. Every farmer and gardener should be on the look-out for the insect. Professor Dean urges, and upon discovering signs of its presence should immediately inform his state entomologist or experiment station, sending in the insect or the plant on which it has evidently worked.

INSULATE HIVES IN WINTER

Ample Protection Should Be Supplied to Keep Out Cold Winds—Leave Entrance Open.

Protect hives from prevailing cold winds, and insulate hives to retain the heat generated by the bees. A grove of trees, an adjacent hill, or nearby fence may serve as a windbreak. The packing usually done should completely surround the hive, including the bottom, but the bees' entrance should remain open, though reduced in size. Cork chips, sawdust, fine shavings, dry leaves, chaff, and similar material should be used and packed tightly in a box built about the hive, allowing from six to eight inches space for the insulation.

QUARTERS FOR YOUNG STOCK

Preferable to Have Calves Separated From Main Part of Cow Barn—Mothers Not Disturbed.

Some dairymen fail to consider housing the young stock when they build their barns. It is preferable to have the young stock separated from the main part of the cow barn because of odors and because calves near their mothers will cause the cows to become restless. The quarters for the calves should be connected with the dairy barn, and a location on the south or east side of the barn is desirable.

GRASSHOPPERS MAKE FINE POULTRY FEED

Especially Relished by Turkeys and Guinea Fowls.

Fowls Consume Millions of Destructive Insects During Course of Year—With Minimum Amount of Trouble to Farmers.

Grasshoppers are beginning to pay big cash dividends in North Dakota through the medium of poultry, especially in turkeys and guinea fowls. The experiment has been successfully tried at the state agricultural college and numerous farmers have taken the cue.



Fattened Turkeys Being Driven to Market.

Wherever there are green fields, there are grasshoppers and other insects. G. R. Greaves of the agricultural college, who has conducted the experiments, says:

"It seems the inexorable law of nature that wherever there is something good to eat there is something to eat it, and man's existence is a continual struggle for supremacy over the creatures that are determined to consume the food he requires."

During past years in North Dakota, prairie chickens, sage hens and grouse held the grasshoppers in check, and their plumpness and the delicious quality of their meat attested to the superiority of their food.

Now the prairie chickens especially are going the way of the buffalo, and Mr. Greaves was assigned to find a substitute that would keep down the insect pests with a minimum of trouble and expense to the farmer. The answer is turkeys and guineas.

Mr. Greaves declares that flocks of turkeys and guineas consume millions of grasshoppers and other insect pests, and naturally do their own foraging. Early in the season the experimental flocks at the agricultural college have grown fat and strong on the young insects.

Later in the season they have received the abundant exercise necessary for their proper market conditioning by chasing the elusive hoppers, have saved the field corps and provided a new, big source of income.

"Three old turkeys kept through one winter," said Mr. Greaves, "produced a flock of young turkeys the following season which kept the fields near their house clear of grasshoppers, and fulfilled their destiny by gracing Thanksgiving tables."

BEST PRACTICE IN PLOWING

According to Minnesota Expert It is Best to Deepen Furrows Gradually Each Year.

The nature of the soil and the crop to be grown should determine the question of whether to plow deeply or more shallow. As with most other farm problems, the farm operator's judgment and experience must be called into play in determining which practice is best on any farm.

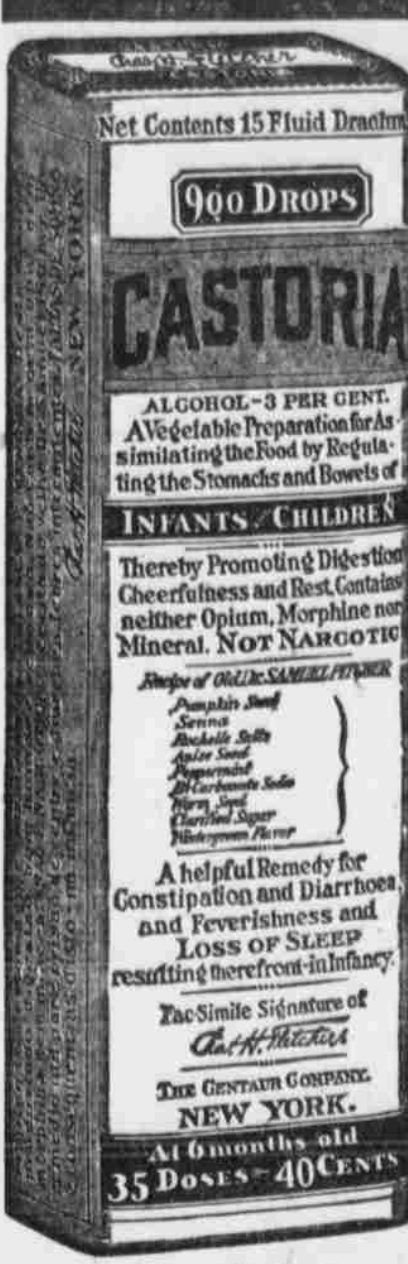
Andrew Ross, vice director of the Minnesota experiment station, believes that deep furrows turned on edge, or "three-quarters over," furnish the best conditions for pulverizing and sweetening the soil. "It is not good practice," he says, "to deepen the plowing greatly in any one year. It is better to deepen it by one-half inch or an inch each year until a sufficient depth has been reached. Rarely is it necessary to plow deeper than seven or eight inches, except for certain deep-rooted crops like sugar beets, carrots, potatoes and like crops.

"Where it is desirable to incorporate in the soil water-holding material, such as a green manure crop or a dressing of coarse barnyard manure, deep plowing is wise. Either a very sandy or a very heavy dense clay would be benefited by such treatment periodically."

FALLACIOUS IDEA OF SHEEP

Animals Will Consume More Weeds and Shrubs Than Other Animals, but Need Some Feed.

Many farmers who have failed with sheep have gone into the business with the fallacious idea that sheep will eat anything, simply because some misinformed person started the tale. Sheep will consume more weeds and shrubs than any other class of animals, but to turn them into the woodlot and expect them to thrive on sprouts and dry leaves is asking too much of their digestive systems. However, there is usually waste land on most farms on which the sheep may be kept at certain periods of the year very profitably.



Net Contents 15 Fluid Drachms
900 DROPS

CASTORIA

ALCOHOL—3 PER CENT.
A Vegetable Preparation for Assimilating the Food by Regulating the Stomachs and Bowels of

INFANTS & CHILDREN

Thereby Promoting Digestion, Cheerfulness and Rest. Contains neither Opium, Morphine nor Mineral. **NOT NARCOTIC**

Prepared by **W. D. PARKE & CO.**
Largest and Purest
Serravallo's Tonic
Bismuth Salts
Fruit Syrup
Cathartic
Chloride of Potassium
Dissolved Sugar
Vitamin-Free Flavor

A helpful Remedy for Constipation and Diarrhoea, and Feverishness and LOSS OF SLEEP resulting therefrom—in infancy.

The Similar Signature of **Chas. H. Fletcher**

THE CENTAUR COMPANY, NEW YORK.
At 6 months old
35 Doses—40 CENTS

Exact Copy of Wrapper.

CASTORIA

For Infants and Children.

Mothers Know That Genuine Castoria

Always Bears the Signature of **Chas. H. Fletcher**

In Use For Over Thirty Years

CASTORIA

THE CENTAUR COMPANY, NEW YORK CITY.

Watch the Little Pimples; They are Nature's Warning

Unusually and Disfiguring Signals of Bad Blood.

Pimples on the face and other parts of the body are warnings from Nature that your blood is sluggish and impoverished. Sometimes they forestall eczema, boils, blisters, and other skin disorders that burn like flames of fire.

They mean that your blood needs S. S. S. to cleanse it of these impure accumulations that can cause

SEASONS HAVE NOT CHANGED

Records Show That Weather and Climate Are the Same Today as They Were Long Ago.

"Weather and climate have not changed from the time of the Pilgrims down to the present day," are the closing words of an article by Prof. Robert de C. Ward of Harvard university, on "The Snowfall of the United States," in the Scientific Monthly. That this is so is proved by a comparison of present-day conditions with those so accurately recorded by the early settlers of New England, "There are accounts of great cold; of deep snows; of violent winter storms. There are also many descriptions of very mild and open winters. Thus, we read of December and January resembling May and June; of flowers growing in the woods in midwinter; of 'so little snowfall as scarcely to give opportunity for enjoying the music of the sleigh bells,' of 'green Christmas-nasses,' of 'winter turned into summer;' of the 'ground bare for the most part;' of little ice; of crocuses up of wild violets in bloom, and of lilacs 'throwing out their leaves' in January."

The Fitting Place.
"What action did the club take on that resolution to have an annual dinner?"
"They laid it on the table."

The Difficulty.
"What do you think of street paving in the abstract?"
"How can you take abstract views of a concrete subject?"

Naturally.
"How do you pay for your apartment?"
"Oh, at flat rates."

Coffee troubles Vanish

when the table drink is changed from coffee to

Postum Cereal

Its rich flavor makes it fully acceptable to those who like coffee but find coffee doesn't like them.

This healthful table beverage has not increased in price

At Grocers and General Stores

Two Sizes Usually sold at 15¢ and 25¢

Made by Postum Cereal Co. Battle Creek, Mich.