

Flynn's Addition

TO

NORTH PLATTE.

Flynn's Addition to North Platte presents the greatest opportunity ever offered to acquire a fine home site with every comfort and convenience of the city within easy reach.

Five blocks from Locust street.
Two blocks from the Electric plant.
Two blocks from the Water plant.

The logical location for the proposed main to the river which must shortly be constructed by the city to relieve the congested sewer conditions in the Fourth ward.

Neville's Sub-Division

OF

Sections 34 and 27

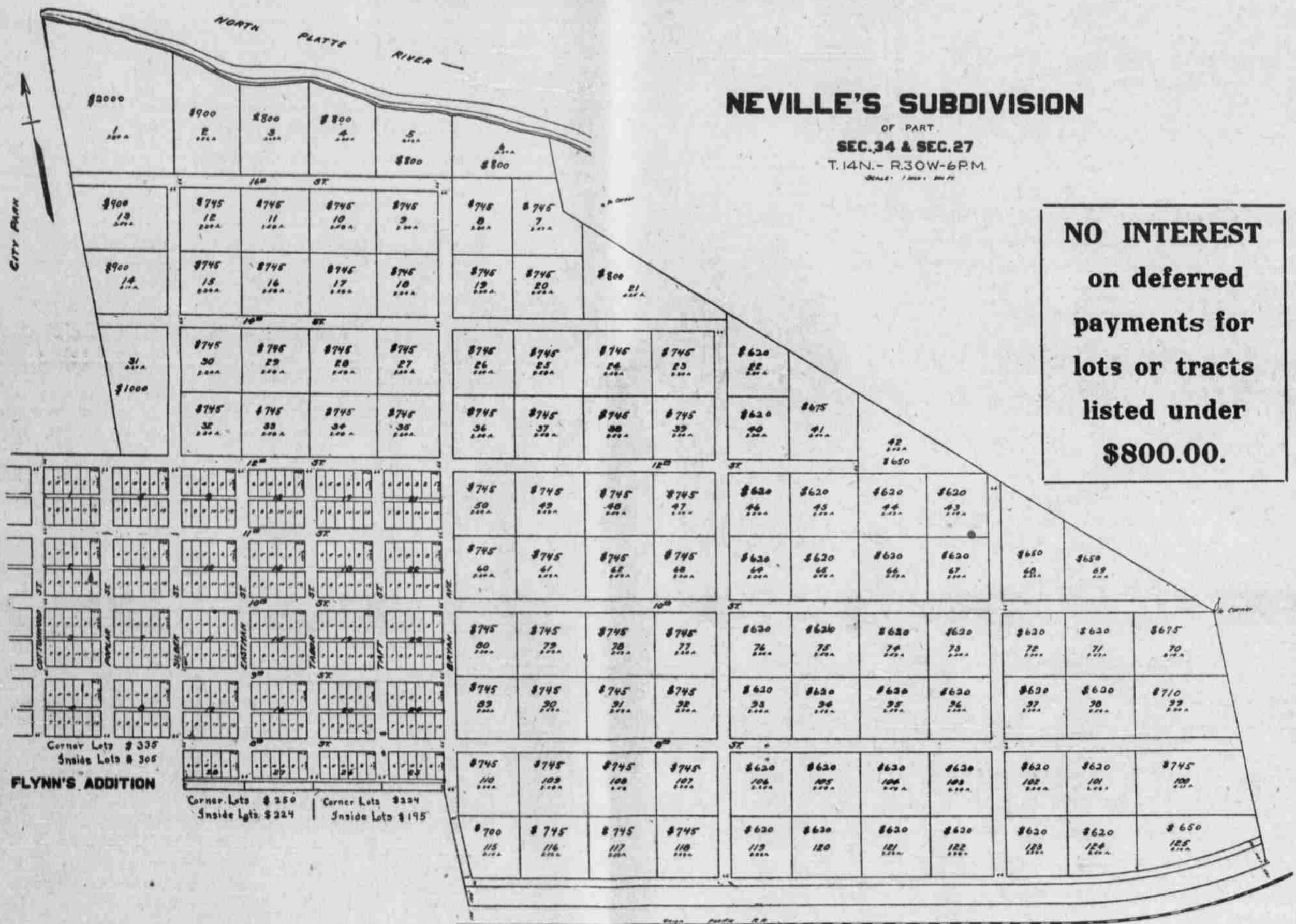
For those who desire a semi rural home within easy reach of city schools and markets, the acre tracts in Neville's Subdivision of Section 34 and 27 will forcibly appeal.

These tracts of fine land are laid out in blocks, the streets conforming with the streets of the city.

Blocks average approximately 2½ acres and 8 blocks approximately 20 acres can be had in one tract if desired.

Blocks purchased in Plattsville Subdivision a few years ago are selling today for as much as 400 per cent profit. Land is the best investment in the world and that is especially true where it borders a city like North Platte. Our population is increasing at the rate of 1000 a year.

Conveyance-Contract for Warranty Deed.



Terms---\$50.00 down and \$10.00 a month. No interest. 10 per cent off for cash.

Lots 7, 8 and 9 Block 2 Flynn's Addition not included in these prices
Fifty Dollars down and \$10.00 for fourteen months will purchase one of the finest home sites in North Platte.

The Building & Loan will help you build. You can not afford to pay rent.

Streets now being graded.
Sale of lots open October 1st, 1919.

Terms---All tracts listed for less \$800.00, \$100.00 down and \$10 per month. No interest. 10 per cent off for cash.

Special terms will be arranged on all tracts listed from \$800 up.
Acre tracts now on sale.

TAKE YOUR PICK. MAKE YOUR SELECTIONS EARLY.

FIRST COME---FIRST SERVED.

CUT THIS PAGE OUT FOR USE IN MAKING YOUR SELECTION.

Keith Neville, Owner.

Gene Crook, Agent.