

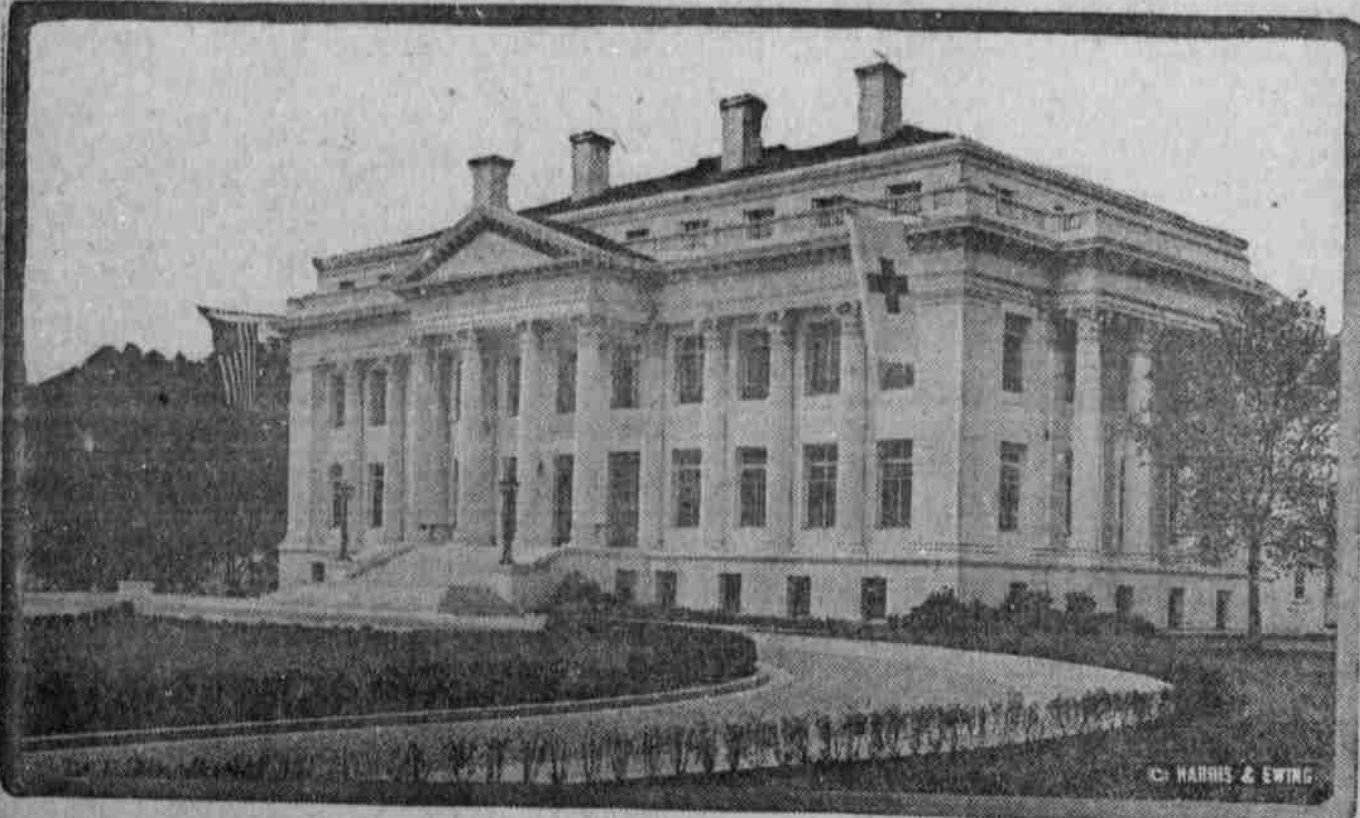
1—Steel cargo ship Galesburg, 7,500 tons, launched at Mariner's Harbor, Staten Island. 2—Observers at American outpost station in France, protected by anti-aircraft gunners. 3—One of the great Handley-Page bombing machines of the British air force being prepared for a raid.

HOFBURG PALACE IN VIENNA STONED BY RIOTERS



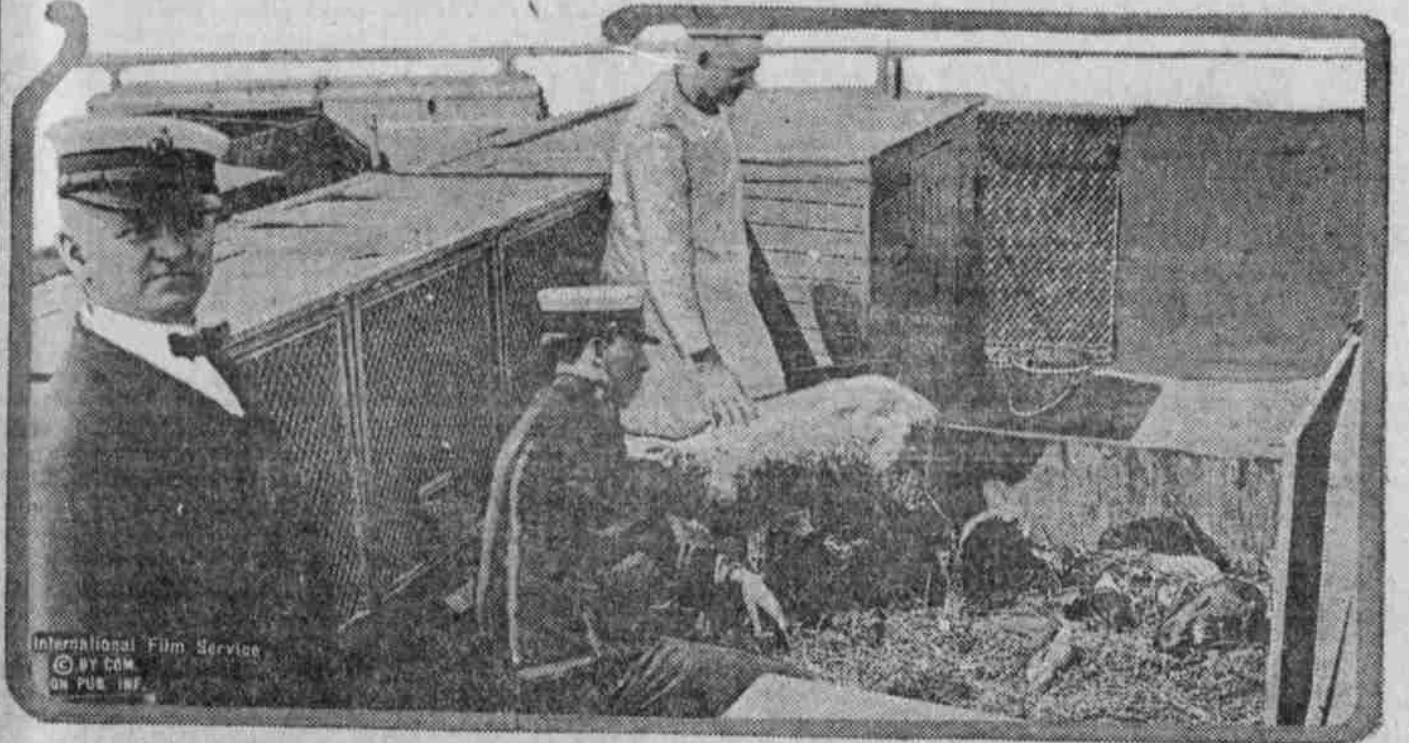
This is the facade of the Hofburg palace in Vienna, one of the residences of Emperor Charles, which was stoned by a hungry mob not long ago.

AMERICAN RED CROSS BUILDING IN WASHINGTON



The completed building of the American Red Cross in Washington is one of the handsomest structures in the capital. Though it was of ample size for prewar needs, it has been necessary to provide several times its floor space in additional temporary quarters back of the permanent building.

LIVE STOCK FARM ABOARD A BATTLESHIP



Some of the American battleships have real farms. This photograph shows the admiral's live stock farm aboard one of the big vessels. Of course the animals are really pets.

BALDY OF NOME AND HIS SERVICE FLAG



Misses Fay and Helen Allan, daughters of "Scotty" Allan, driver of the famous Darling team of dogs, with Baldy of Nome, and his flag representing his 26 sons and grandsons now in the service on the Italian front. Baldy was the leader of the Darling team, but was too old for active war service. His descendants are among the dogs that have been invaluable in carrying supplies and munitions to Italian soldiers in the mountain passes, especially during the winter.

MRS. IRA NELSON MORRIS



Mrs. Ira Nelson Morris of Chicago, wife of the American minister to Sweden, has been taking a rest in the United States. The reports furnished the American state department by her husband have kept the Washington government in close touch not only with inside conditions in Germany, but with the swift changes in the remarkable Russian situation. Mrs. Morris has labored incessantly to alleviate suffering in Sweden and recently was publicly thanked by King Gustave for her help to the destitute.

ONE REASON WHY THE HUN WAS STOPPED



This heap of empty shell cases shows just a part of the ammunition expended by one British battery in a few days' fighting on the French front. "We never have more shells than they need, for all their ammunition factories are working night and day."

Cliff Swallow's Revenge.

L. M. Hollingsworth tells a story of the way a cliff swallow treated a blue bird who had stolen its nest: "While making my home with grandmother, an uncle told me the following incident in the life of the cliff swallows. One spring, on returning to their old home under the eaves, a pair of the swallows found their nest already in possession of a pair of earlier blue birds. They tried in vain to drive them out. At last they called a council of war in which the whole company joined. After reaching a decision, they formed a constant line of swallows from the horse pond to the nest, each carrying a little pellet of mud. Each one built his pellet into the mouth of the nest until they had the blue bird that held the nest walled up within it. The nest afterward became dislodged and fell with the carcass of the blue bird still within it. The bird had died in its prison."

TROUBLES OF THE ENGINEERS IN FRANCE



The engineers across the water are constantly busy making roads and reconstructing those that have been torn up by shells. Here is a roller that has got stuck in a ditch, and it takes husky Canadians like those you see to pry it back into place.

BRAVE CHAPLAIN DECORATED



Chaplain J. B. DeValles, with the Knights of Columbus in France, has been awarded the Croix de Guerre for bravery and coolness while under fire. He was attached to an infantry regiment which was in the thick of the fight, and during the heat of battle he went among the wounded and helped get them to points of safety.

PROTECTING OUR COAST DEFENSES



An anti-aircraft gun of the type which protects many of our coast defenses.

CONDENSATIONS

It is stated that arrangements have been made for the release from the colors of 29,000 British workmen with shipyard experience.

The top of a new table is hinged to fold back and reveal a writing desk with its usual accessories.

Ten power plants for agricultural purposes were erected in the Bombay presidency during the year 1915-16.

How Chaplains Are Equipped.

The following supplies are furnished by the Episcopal diocese of Massachusetts to its chaplains in military service: Communion set, recreation tent, motion picture machine with screen, two fiber trunks for carrying motion picture outfit, portable altar, cross and candlesticks, stationery with name of regiment, talking machine with attachment to play any record, typewriter, and auto truck for motion picture equipment. These articles total a cost of \$1,044.52, as stated in a report from the joint commission on social service of the Protestant Episcopal church.—Oswego Times.

Brought Up Many Families.

The pert elevator boy in the big hotel was airing his views to a passenger on the proper conduct of children.

"What do you know about it?" laughed the passenger. "You aren't married, are you?"

"Well, no," replied the boy, as he flung open the gate on the top floor for his passenger to step out. "but I've brought a good many families up to my time."—Sunshine Bulletin.