

# Official Proceedings of the County Board

Aug. 21, 1916.  
Board met pursuant to adjournment. Present: Herminghausen, Springer, White and clerk.  
Claims allowed as follows:  
J. F. Snyder, road work, Dist. 2, \$24.00.  
J. J. Walters, road work, C. M. Dist. 1, \$70.00.  
George Schoppert, road work, Com. Dist. 1, \$72.00.  
W. D. Waldo, work on U. P. cattle chute, Com. Dist. 3, \$150.00.  
Howard McMichael, 198 loads of brick, Com. Dist. 1, \$89.10.  
Frontier County, culvert, Com. Dist. 3, \$40.10.  
J. D. Adams, Co., repairs for grader, road dist. 30, \$6.00.  
C. A. Robinson, road work, Dist. 30, \$22.00.  
On general fund:  
A. N. Durbin, freight \$3.53.  
Marshall Oil Co., oil and gas for tractor, \$79.22.  
W. T. Elliott, fees State vs. Hill, \$15.05.  
A. B. Hoagland, services on tractor and auto hire, \$230.40.  
Whereupon the board adjourns to Aug. 23, 1916.

C. W. YOST,  
County Clerk,  
August 23, 1916.

Board of equalization met as per recess taken. Present: Herminghausen, Springer and clerk.  
The board proceeded to make and did make the following levies for the year 1916.

### State Levy

General fund 3.40 mills, university fund 1 mill, special university bldg. fund .75 mills, normal school fund

.85 mills, state aid bridge fund .10 mills; total 6.19 mills.  
**County Levy**  
General fund 7.50 mills, road fund 4.30 mills, bridge fund 3.00 mills, soldiers relief fund, 1.0 mill; total 14.90 mills.

### Precinct Levies

Hershey bridge, bond and interest, 1.00 mill. Boatwick bridge, bond and interest 1.00 mill. Birdwood bridge, bond and interest, 1.00 mill. Platte bridge bond and interest, 1.00 mill. South Platte bridge, bond and interest, 2.00 mills.

### Special Levies

Road district No. 2, 5.00 mills. Road District No. 3, 5.00 mills. Road District No. 7, 5.00 mills. Road District No. 9, 5.00 mills. Road District No. 10, 5.00 mills. Road District No. 11, 5.00 mills. Road District No. 15, 5.00 mills. Road District No. 16, 5.00 mills. Road Dist. No. 27, 5.00 mills. Road District No. 28, 5.00 mills. Road District No. 36, 5.00 mills. Road District No. 37, 5.00 mills. Road District No. 45, 5.00 mills. Road District No. 46, 5.00 mills. Road District No. 50, 5.00 mills. Road District No. 51, 5.00 mills. Road District No. 58, 5.00 mills.

### City and Village Levies

North Platte general fund 6.50 mills, water bonds and interest 5.90 mills, sewer bonds and interest 2.00 mills, bridge bonds and interest, .50 mill, park bonds and interest, .50 mill, paving bonds and interest, .50 mill, public library fund 1.50 mills, public park fund 1.00 mill, street lighting fund 4.50 mills, fire department fund 6.00 mills, emergency fund 3.00 mills, sewer maintenance (real estate only) 3.00 mills; total 34.00 mills.

Hershey—general fund 10.00 mills, street lighting fund 5.00 mills, fire protection 20.00 mills, interest on light bonds, 5.00 mills, interest on water bonds 10.00; total 50.00 mills.

Brady—General fund, 10.00 mills, interest on light bonds 5.00 mills, building purposes 2.50 mills; total 17.50 mills.

Maxwell—General fund 15.00 mills, interest on light bonds 7.00 mills, light plant maintenance 5.00 mills; total 27.00 mills.

Sutherland—General fund 15.00 mills, interest on light bonds 5.00 mills, street lighting 5.00; total 25.00 mills.

Wallace—General fund 10.00 mills, street lighting 5.00 mills; total 15.00 mills.

### School Levies

No. 1 general 35, bond 7.50.  
No. 2, general 20, high school 2.  
No. 3 general 15, special building 10.  
No. 4 general fund 20.  
No. 5 general fund 15, high school 2.  
No. 6, general 20.  
No. 7, general 30, bond 10.  
No. 8, general 10, high school 1.  
No. 9, general 8, high school 1.  
No. 10, general 15, high school 2.  
No. 11, general 9.  
No. 12, general 20, high school 2.  
No. 13, general 25.  
No. 14, general 35, high school 3.  
No. 15, general 10, high school 10.  
No. 16, general 30.  
No. 17, general 20.  
No. 18, general 10, high school 2.  
No. 19, general 35, high school 3.  
No. 20, general 30.  
No. 21, general 20.  
No. 22, general 20.  
No. 23, general 35, bond 10.  
No. 24, general 15, high school 2.  
No. 25, general 30.  
No. 26, general 15, high school 3, special building 5.  
No. 27, general 25, high school 2.  
No. 28, general 20.  
No. 29, general 45.  
No. 30, general 20, high school 5.  
No. 31, general 10, high school 1.  
No. 32, general 20, high school 4.  
No. 33, general 20.

No. 34, general 10, high school 3.  
No. 35, general 20, high school 5.  
No. 36, general 25, high school 8.  
No. 37, general 30, bond 5.  
Judgment 5.

No. 38, general 10, high school 2.  
No. 39, general 10.  
No. 40, general 30.  
No. 41, general 30.  
No. 42, general 20, high school 2.  
No. 43, general 30, high school 5.  
No. 44, general 20.  
No. 45, general 35, high school 3.  
No. 46, general 25.  
No. 47, general 35, bond 10, high school 15.

No. 48, general 15, high school 5.  
No. 49, general 35.  
No. 50, general 35.  
No. 51, general 30.  
No. 52, general 35.  
No. 53, general 15, high school 4.  
No. 54, general 25.  
No. 55, general 30, bond 1.  
No. 56, general 15, high school 1.  
No. 57, general 20.  
No. 58, general 20, high school 4.  
No. 59, general 30.  
No. 60, general 35, high school 2, special building 10.


No. 61, general 20, high school 1.  
No. 62, general 35.  
No. 63, general 35.  
No. 65, general 30, high school 1.  
No. 66, general 15.  
No. 67, general 20, bond 5, high school 2.

No. 68, general 20, high school 4.  
No. 69, general 30.  
No. 70, general 10, high school 2.  
No. 71, general 30.  
No. 72, general 25.  
No. 73, general 35.  
No. 74, general 20.  
No. 75, general 25.  
No. 76, general 15, high school 3.  
No. 77, general 35.  
No. 78, general 35.  
No. 79, general 35.  
No. 80, general 20, high school 1.  
No. 81, general 30.

No. 82, general 15.  
No. 83, general 25.  
No. 84, general 30.  
No. 85, general 25, high school 2.  
No. 86, general 30, high school 2.  
No. 87, general 35.  
No. 88, general 15, high school 6.  
No. 89, no school.  
No. 90, no school.  
No. 91, general 30.  
No. 92, general 35.  
No. 93, general 35.  
No. 94, general 30.  
No. 95, general 25.  
No. 96, general 15, high school 3.  
No. 97, general 30, high school 3.  
No. 98, general 35, and 5, high school 3.

No. 99, general 25.  
No. 100, general 35.  
No. 101, general 20, high school 1.  
No. 102, general 20.  
No. 103, general 35.  
No. 104, general 35.  
No. 105, general 35, bond 2.  
No. 106, general 25, high school 4.  
No. 107, general 35.  
No. 108, general 35.  
No. 109, general 30, high school 2.  
No. 110, general 30.  
No. 111, general 35, bond 5.  
No. 112, general 25.  
No. 113, general 35, high school 2.  
No. 114, general 30.  
No. 115, general 35.  
No. 116, general 35.  
No. 117, general 20, high school 5.  
No. 118, general 30, high school 5.  
No. 119, general 35, high school 5.  
No. 120, general 35, bond 2.  
No. 122, general 15, bond 5.  
No. 123, general 25.  
No. 124, general 25.  
No. 125, general 35.  
No. 126, general 30, bond 20.  
No. 127, general 25, bond 2.5, high school 4.  
No. 128, general 35, high school 3.  
No. 129, general 35.  
No. 130, general 35.

Whereupon the board stood adjourned.  
C. W. YOST,  
County Clerk.



## The Farmers' Bank

Distinctively a "farmers' bank" we know the farmers' requirements and make a specialty of meeting them.

Your account at this bank will afford a safe, convenient and ideal banking connection.

We desire your business and will prove ourselves worthy of it by the service we can render. Ask a customer of ours.

### Platte Valley State Bank

North Platte, Nebraska.

No. 82, general 15.  
No. 83, general 25.  
No. 84, general 30.  
No. 85, general 25, high school 2.  
No. 86, general 30, high school 2.  
No. 87, general 35.  
No. 88, general 15, high school 6.  
No. 89, no school.  
No. 90, no school.  
No. 91, general 30.  
No. 92, general 35.  
No. 93, general 35.  
No. 94, general 30.  
No. 95, general 25.  
No. 96, general 15, high school 3.  
No. 97, general 30, high school 3.  
No. 98, general 35, and 5, high school 3.  
No. 99, general 25.  
No. 100, general 35.  
No. 101, general 20, high school 1.  
No. 102, general 20.  
No. 103, general 35.  
No. 104, general 35.  
No. 105, general 35, bond 2.  
No. 106, general 25, high school 4.  
No. 107, general 35.  
No. 108, general 35.  
No. 109, general 30, high school 2.  
No. 110, general 30.  
No. 111, general 35, bond 5.  
No. 112, general 25.  
No. 113, general 35, high school 2.  
No. 114, general 30.  
No. 115, general 35.  
No. 116, general 35.  
No. 117, general 20, high school 5.  
No. 118, general 30, high school 5.  
No. 119, general 35, high school 5.  
No. 120, general 35, bond 2.  
No. 122, general 15, bond 5.  
No. 123, general 25.  
No. 124, general 25.  
No. 125, general 35.  
No. 126, general 30, bond 20.  
No. 127, general 25, bond 2.5, high school 4.  
No. 128, general 35, high school 3.  
No. 129, general 35.  
No. 130, general 35.

Mr. and Mrs. Elmer Coates and family will leave tomorrow by auto to attend the state fair and visit friends in Lincoln.

Mrs. J. S. Twinem and children returned Wednesday morning from an extended visit with relatives in Glendon, Ia.

Mrs. H. E. Hartley and children who have been visiting relatives in Portland for two months, will return tomorrow.

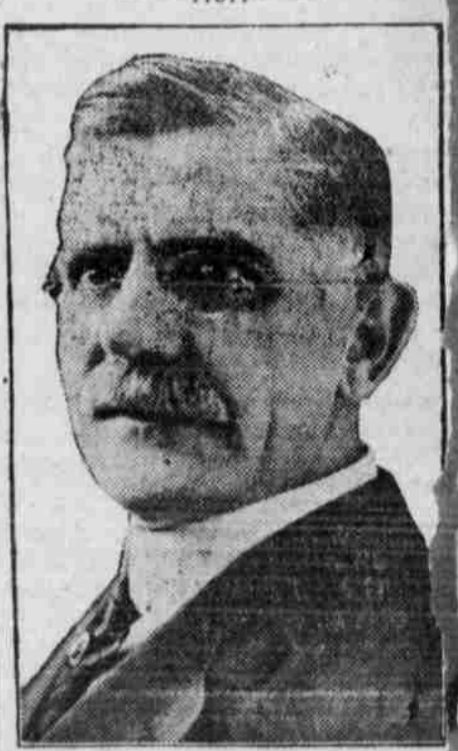
1905 west Fourth street, Homeopathic Hospital.

Masters Donald Newton and Merle Maupin returned Wednesday morning from Omaha where they visited for two weeks.

Miss Mary Elias has resigned her position in the Lieke-Sandall grocery and is attending business college in Grand Island.

Lost—Apron of a Chalmers six last Saturday night between the Schram and Bechon farms. Finder please leave at this office.

Mrs. Arthur Howard and sons returned Tuesday afternoon from Yester, Wash., where they spent several months with relatives.



**JOHN C. MARTIN**  
Central City, Nebraska  
Candidate for Election on the Non-Partisan Judiciary Ballot  
For Supreme Judge

Mr. MARTIN is 55 years of age, was born and reared at Pittsburg, Pa., where he read law for four years prior to coming to Nebraska. He was educated at Wooster University, Wooster, Ohio, and Lafayette College at Easton, Pa. He came to Nebraska in 1883 and first located at Columbus, where he practiced law until 1885 when he moved to Morrill County, Neb. He has devoted his entire time and energy to the practice of the law in this state ever since, excepting during the years 1899 and 1900 when he was legal adviser of the auditing department of the United States located at Havana, Cuba, under the military occupation of Cuba.

As evidence of his conception of the duties of the office to which he aspires, and for the purpose of advising the electors of Nebraska as to his conduct in that office if elected, he announces the following

**PLATFORM**  
Equality before the law.  
Remove the law's vexatious delays.  
Substantial justice unhampered by technicalities.  
Purify the courts by severe punishment for perjury.  
No politics or favoritism known on the bench.  
"To do the right as God gives me to see the right."  
Would Appreciate Your Support and Will Strive to Merit Your Confidence.

**LOCAL AND PERSONAL.**  
Arthur McCabe left a few days ago for Omaha.  
Dr. N. McCabe made a professional visit to Hershey Wednesday.  
Miss Elfreda Mettin visited friends in Ogalala the latter part of last week.  
Miss Ella Weaver is expected home next week from a visit of several weeks in Portland.  
Miss Merle Thornburg has returned to Grand Island after visiting relatives for a few days.  
Wanted—Good girl for general housework. Apply to Mrs. C. F. Tollesen, Sutherland, Neb.  
Miss Evangeline Herrod left Tuesday evening for Denver to visit her aunt Mrs. M. C. Harrington.  
Ralph Allison is expected here tomorrow evening from Cheyenne to visit local friends until Tuesday.  
The regular weekly dance of the Yeoman drill team will be held at the Lloyd opera house this evening.  
Mrs. George Crick and children visited friends here this week while enroute to Kearney from western points.  
Victor Halligan will leave today for Omaha to bring up the Halligan car which was left there two weeks ago.  
Miss Jennie Mitchell of Lexington, who has been the guest of Mrs. M. V. Mitchell for three weeks, left yesterday.

# Does Prohibition Prohibit?

Many Nebraskans have the mistaken idea that state Prohibition makes a state "dry" in the actual sense of that word.

## A Confession of Failure:

(From the Topeka State Journal, of Jan. 14, 1916.)  
"Are the prohibition forces of Topeka cheerfully smiling under a feeling of false security in ignorance of the situation which they have to combat? \* \* \* Legally Topeka is 'dry!' But—"

## The Record:

In the same article the Topeka Journal states that the INCOMPLETE record of shipments for 1915 shows that citizens of Topeka ordered and received during that year a total of 160,169 quarts of various kind of liquors.

The reader's attention is called to the significant fact that these are the present conditions in Topeka after 35 years of constant effort under state Prohibition to compel the people to discontinue the use of liquors.

## The Actual Condition:

Prohibition fails to remove the opportunity and the desire on the part of the people to purchase and to use alcoholic beverages. Denied the opportunity to purchase from manufacturers and dealers operating under license within the state, resort is had to express shipments to bootleggers and to "alley joints."

Extract from an address by Harmon Allen, Chaplain of the Kansas Penitentiary, printed on page 39 of the First Biennial Report of the Kansas State Board of Corrections.

## The Chaplain's Testimony:

\* \* \* "About 37 per cent of the prison population are floaters from other states. Most of them came by the 'dope' and liquor routes. It must be confessed that a large percentage of Kansas citizens incarcerated here came by the same route. \* \* \*"

So long as the desire to purchase and to use exists, better results are achieved by REGULATING the manufacture and sale of alcoholic beverages than are secured by enacting a state Prohibition law.

**The Nebraska Prosperity League**  
OPPOSED TO STATE PROHIBITION. IN FAVOR OF LOCAL OPTION, HIGH LICENSE  
President, L. F. CROFOOT    Treasurer, W. J. COAD    Secretary, J. B. HAYNES  
Send for our literature.    OMAHA, NEBRASKA

- NEBRASKA PROSPERITY LEAGUE**  
A Statewide, Nonpartisan Organization of Taxpayers
- VICE-PRESIDENTS**
- WEBLEY P. ADKINS    SOUTH OMAHA
  - JOHN ALBERTSON    MERCHANT, PENDER
  - DR. C. G. ALLISON    SURGEON
  - GEORGE ANTIL    INVESTMENTS, BLAIR
  - Z. M. BAIRD    HARTINGTON
  - J. L. BAKER    MANUFACTURER
  - J. W. BENDER    FARMER, HUNPHRY
  - ALFRED BRATT    INVESTMENTS, GERRA
  - CHAR. H. BROWN    REAL ESTATE INVESTMENTS
  - W. J. BURGESS    INVESTMENTS
  - HARRY V. BURKLEY    PRINTER
  - W. M. BUSHMAN    STORAGE
  - ALBERT CAHN    MANUFACTURER
  - LOUIS S. DEETS    STOCKMAN, KEARNEY
  - E. H. FAIRFIELD    REAL ESTATE INVESTMENTS
  - JOHN H. FRENZER    REAL ESTATE INVESTMENTS
  - DR. B. GILMORE    PHYSICIAN AND SURGEON
  - T. V. GOLDEN    CAPITALIST, O'HELL
  - FREDERICK HAARMAN    MANUFACTURER
  - J. J. HANIGHER    CONTRACTOR
  - FRED D. HUNTER    ATTORNEY, WEST POINT
  - FRANK B. JOHNSON    GRAIN, PRINTING CO.
  - C. J. KARBACH    INVESTMENTS
  - HON. J. T. KEELY    VALENTINE
  - F. J. KELLY    MERCHANT, HERRING
  - FRANK E. KENNARD    CAPITALIST
  - JACOB KLEIN    MERCHANT, BEATRICE
  - RUD LATTA    RANGE OWNER, TEXASIA
  - E. M. P. LEFLAKE    CAPITALIST
  - G. W. MEGEATH    COAL OPERATOR
  - JOHN A. MOHRBACHER    INVESTMENTS, WYOMING
  - SOPHUS F. NEBLE    PUBLISHER
  - FRANK A. NIMS    RETIRED FARMER, FALLS CITY
  - J. J. NOVAK    BANKER, WILBER
  - J. J. O'CONNOR    ATTORNEY
  - GEORGE PARR    MERCHANT, NEBRASKA CITY
  - HON. WATSON L. PURDY    LAND OWNER, HARRISON
  - THEODORE REIMERS    STOCKMAN, FULLERTON
  - GARL RICHDE    RETIRED FARMER, GILVERSE
  - JOHN S. ROSSICKY    PUBLISHER
  - J. G. ROTH    INVESTOR, FREMONT
  - JOHN SCHINDLER    STANTON
  - W. H. SCHMOLLER    JOBBER
  - THEODORE H. SERK    STOCKMAN, NELSON
  - S. E. SHULTZ    MANUFACTURER
  - HARRY E. SIMAN    WINEBIE
  - PAUL F. SKINNER    MANUFACTURER
  - A. F. SMITH    JOBBER
  - N. A. SPIESBERGER    WHOLESALE
  - HON. P. F. STAFFORD    NORFOLK
  - WILLIAM STORK    INVESTMENTS, ARLINGTON
  - ROBERT G. STRIBLOW    CONTRACTOR
  - GEORGE S. TYLER    INVESTMENTS, HASTINGS
  - A. J. VIERLING    PRES. FACTORY & WAREHOUSE
  - THEODORE WIDAMAN    STOCK BUYER, AUBURN
  - G. B. WILLEY    ATTORNEY, RANDOLPH
  - S. M. WOLBACH    MERCHANT, GRAND ISLAND
  - R. M. WOLCOTT    MERCHANT, CENTRAL CITY
  - HON. OTTO ZUELLOW    MAYOR, SCHUYLER