

SPECIAL

Ladies, we want you to call and see our new line of China and Fancy Articles in China. Beautiful pieces and large stock

CLINTON,

The Jeweler.

DR. O. H. CRESSLER,
Graduate Dentist
Office over the McDonald State Bank.

For rent—Modern 7 room house. Inquire of S. Richards.

Come to the Masonic hall for supper Thursday evening; 25 cents per plate.

The Presbyterian congregation at Gandy is raising funds to build a church to replace the one burned two years ago.

Work on the new three-section ice house will begin in the near future, preparations for the foundation now being made.

"Long Hungry Zeke" is the title of a song that will be heard in The Missouri Girl which appears at the Keith tomorrow evening.

The quail season opens next Sunday and will close the last day of the month. The birds are said to be quite plentiful and local hunters anticipate fine sport.

Genuine Glidden Barb Wire \$3.20, Baker Perfect \$3.25. GINN & WHITE.

The Union Pacific ice lake is now filled with water to the depth of nearly five feet and is therefore in readiness for the first freeze that will form ice of sufficient thickness for filling the houses.

The meeting of the Episcopal Guild will be held on Friday afternoon of this week instead of Thursday at the home of Mrs. M. H. Douglas. A large attendance is especially urged upon this occasion.

Weather forecast. Partly cloudy tonight and Wednesday, not much change in the temperature. Highest temperature yesterday 33; one year ago 52. Lowest temperature this morning 50; one year ago 10.

For insurance. See Temple Real Estate and Insurance Agency.

Yesterday reminded me that winter is here. Snow began falling in the morning and continued until late in the afternoon, but melted almost as fast as it fell. During last night the temperature dropped several degrees, and this morning there was a renewal of snow, sufficient falling by noon to cover the ground.

Let me figure on the storm windows you will need. P. M. SORENSON.

President Roosevelt is at work on his last message to congress. One of his recommendations will be a practical and effective amendment to the Sherman anti-trust act with the view of establishing some such a government supervision of great industrial corporations as the inter-state commerce commission maintains over railroads.

For Sale.—No. 39 Art Garland Store nearly new. Inquire of Alex Meston, at Steam Laundry.

The ladies of the Episcopal church will hold their annual November sale and supper in the Masonic banquet room November 10th. You will find many things suitable for Christmas gifts at their fancy work booth and in the dining room a delicious supper. The ladies will serve escalloped oysters, cold meats, salads, potato chips, white and brown bread, cake and coffee.

That el air—Let me fix it. P. M. SORENSON.

This item appeared in today's Omaha Bee: W. R. McKeen, Jr., president and general manager of the McKeen motor company, of Omaha, who has been quite sick for the last three months and who is now at French Lick Springs, Ind., is reported as improving fast and will be out of the sanitarium in a few days. His plans for recuperation are not completed and it is not known whether he will return to Omaha or go south for a short time.

For Sale.

My present residence, corner of Locust and Twelfth street; eight rooms, bath, electric lights, and a fine dry cellar under entire house; will sell with it, one lot or one acre of fine soil free from alkali. E. A. CARY.

Miss Mary Weinberg has returned from a visit her sister in Lincoln.

The Christian aid society will meet Thursday afternoon with Mrs. George Smythe, Corner of South Vine and A streets.

People of Maxwell and vicinity who desire cut flowers for any purpose can leave orders with Mr. Fetter, the druggist, who is agent for Chas. Pass, the florist of this city.

A good supper for all who come to the Masonic hall Thursday evening, November 12th.

The county commissioners convened yesterday and will remain in session several days transacting business pertaining to roads, the allowance of claims and other matters of a general nature.

For Building & Loan money, see Temple Real Estate and Insurance Agency.

E. S. Davis, of this city, who was one of the republican candidates for presidential electors, lead the ticket in the number of votes received in the county, thus showing that he has lost none of his popularity with the voters.

8 percent private money to loan on farms or city property. BRATT & GOODMAN.

A man who gave his name as Wilson was arrested in town Saturday on the charge of stealing two rings and a pair of trousers from a Julesburg man. He was held in jail until last night when an officer came down and took him back to Julesburg.

Lost—On the streets a sterling silver belt pin. Finder return to this office and receive suitable reward.

The children of the late David Jones desire to express their heartfelt thanks to friends and neighbors and to members of the G. A. R., W. R. C., D. of H., L. O. T. M. and Hose Co. No. 1 for the assistance given during the sickness and at the funeral of their father.

President Roosevelt has issued invitations to a "labor legislation" dinner at the White House November 17. The guests will include many labor organization chiefs, judges and executive officials, but it is understood that Gompers, Morrison and Lennen are not included. Labor legislation will be discussed.

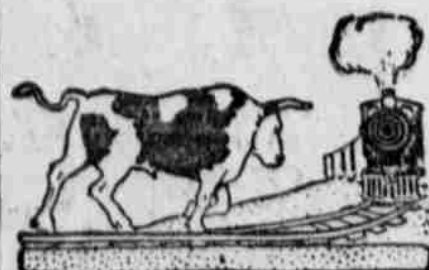
For Rent—5 room cottage, 2 lots, good cellar and city water in house. C. A. Lowell.

The Union Pacific has issued a bulletin giving the estimated yield of crops in the different counties of the state for the year 1908. The total production in Lincoln is tabulated as follows: Winter wheat 344,500 bushels, spring wheat 266,562 bushels, oats 218,900 bushels, rye 47,400 bushels, barley 64,000 bushels, corn 1,885,200 bushels, potatoes 217,360 bushels, millet 4,228 tons, alfalfa 20,250 tons, timothy 65 tons, wild hay 72,569 tons.

\$10.00 Reward

will be paid for the return of my white and black setter dog or information leading to his recovery.

DR. H. C. BROCK.



Trouble Ahead

For those youngsters who aren't shod with our shoes. No matter how hard your boy is on shoes bear in mind its the sign of good health. Don't caution and worry him about it—Buy him a pair of our shoes and the troubles of both will cease.

\$2.00 to \$3.00

GRAHAM & CO.

Frank Coker, of Sutherland, transacted business in town yesterday.

Don't forget to visit the candy booth before leaving the Masonic hall Thursday evening.

The C. E. Society of the Presbyterian church will hold a sale of home made candies at the Masonic hall Thursday evening, November 12th.

The Burlington railroad company paid into the county treasury last Friday twelve thousand dollars, which represents that company's personal taxes for the year 1908.

Ball Brand, First Quality Over shoes and Rubbers, the kind that wear, at Wilcox Department Store.

Willis Karth, night baggageman, has been transferred to Grand Island and in company with his wife left for that city this morning. He is succeeded by Mr. Whyman.

W. A. Paxton, Jr., has sold to George C. White lots 4 and 5, and the north half of the southeast quarter of section 35-14-34, 121.45 acres, for a consideration of \$3,645.

Bargains in City Property.

Beautifully located eight room cottage, strictly modern, shade, and only two blocks from postoffice, \$3000.

One of the finest residences on Dewey street, just complete, two lots, \$3,600.

Six room cottage with corner lot, \$2,800.

Five room cottage, \$1,800.

Good four room house with barn and two lots; snap at \$1,100.

O. H. THOLECKE.

Extra Session Feeler.

Governor Sheldon has sent out the following letter to each member of the last legislature: "The best legislature Nebraska ever had has still an opportunity to render great service to this state. If I convene the legislature will you support a statutory provision for statewide prohibition reserving to any municipality the right by three-fifths vote to suspend it and dispense liquor under such restrictions as may be provided by law."

For Rent

House and storage room, also safety deposit boxes. BRATT & GOODMAN.

Union Pacific Improvements.

The Tribune is creditably informed that early next spring the Union Pacific will renew work on the improvements at this terminal which had been planned in 1907 but not completed this year. These improvements will include a new round house, coal chutes and docks, yardmaster's office and remodeling and extending the present trackage in the yards. The total cost of these improvements will exceed one hundred thousand dollars.

For Sale.

Thirty-three head of high grade Herford yearlings. Apply to or address A. S. Gregg, North Platte, Neb.

THE LATEST STYLE CORSET.



The Primadonna, illustrated, is a new model, a combination of the latest in French corsetry with the graceful lines of the Wade. It has the snug, slender hip, long front and back and a brassiere top, confining and supporting the bust. It is made with or without elastic insertions in front, no insertions in back, and no lining.

All styles of Wade corsets. For sale by Miss Harriet Beyerle. Over McCabe's Drug Store.

Republicans

are not better pleased over the result of the election than are our patrons over

The Quality of our Meats

Give us a trial order and let us convince you

North Platte Meat Market

J. L. STINGLEY, Prop.

THE BEST RANGE

IS A

PENINSULAR



The steel from which Peninsular Steel Range bodies are made is several gauges heavier than other manufacturers use. It is highly polished genuine Planished Steel, which is the most expensive steel made. We were the originators in its use and are today the only manufacturers using it in their ranges. Other manufacturers have used this steel for a short time but on account of the high price discontinued it's use and are now substituting a cheap grade but are still calling it Planished. The bodies of our Ranges are three ply made up of two steel plates, between which is a sheet of genuine Asbestos Mill Board all strongly riveted together, making the most durable Range possible to construct, and one that will retain the heat within the Range to be utilized for baking and cooking. Our Ranges are extra strong for we use more rivets than will be found in two ranges of other makes.

All seams in back as well as in front, are riveted with steeple head rivets, set squarely to front of body, can never pull through. When a flat head is used the steel has to be countersunk to receive the rivet. This operation reduces the tensile pulling strength about one-half, making the walls so weak that they will not stand the strain. Two bottoms are installed, one to protect the floor, and the other to confine the heat to the oven flues. This construction makes the Range extremely rigid. The oven of Peninsular Steel Ranges is just what an oven should be, square and roomy, and with our never break steel oven rack. You can bake on oven rack and oven bottom at same time, doubling your oven capacity without extra fuel. The door is perfectly balanced to open and shut easily and when open forms a broad oven shelf which every cook appreciates. Perfect oven ventilation is accomplished through our original oven ventilators. Fresh air is admitted at bottom of tubular door frame and is drawn into the oven piping hot, and passes out through opening in back carrying with it all odors into stove pipe preventing soggy baking and burnt roasts, as air is always fine and dry. The oven bottom is made of 10 gauge cold rolled steel riveted to body of range by steel flange every two inches and held in center by two heavy steel bolts. We absolutely guarantee it never to break or lose its shape. The oven top consists of three thicknesses, two plates of steel and reinforced by heavy cast plate wherever it comes in contact with the fire. Peninsular key plate top will out last any ordinary top, as key plates are interchangeable with each other making their durability ever-lasting. The corners and centers are strongly braced and ribbed to prevent cracking. These parts are extra heavy and carefully fitted with just sufficient allowance for expansion. The fire boxes are constructed in accordance with right principles for burning hard or soft coal or wood. Grate is latest improved patented duplex grate and can be withdrawn complete through grate door without disturbing the linings or grate front. Ash pot is large and deep with ample room for free circulation of air under grates. The beautiful Planished Steel high closet extends full length of body of Range, made in practically one piece, which keeps it so rigid it will never change its shape and will carry any weight. It has large capacity and is a neat convenience for keeping food and dishes warm. The rolling door operates easily and when open is entirely out of the way. The nickel work is all of Peninsular quality, triple electro plated shines like burnished silver and wears better and lasts longer. Call and examine them for yourselves at

Wilcox Department Store.

FOR SALE.

At the Experimental Sub-Station. Some choice Duroc-Jersey Boars at \$15 each. Twenty-five head of yearling steers and heifers; nearly all of these are Aberdeen-Angus grades. Brome grass seed of the crop of 1908 at 10 cents per pound. Kherson oats for seed at 60 cents per bushel. There is no more winter wheat for sale. W. P. SNYDER, Supt.

Five Hundred Dollars

Buys the northeast quarter of section 10, Twp. 11, Range 34. No terms. Will mail deed to any bank desired. S. E. Donahue, P. O. Box 652, Seattle, Wash.

The Next Best Thing When You Can't Get Guaranty of Bank Deposits.

Invest your money in one of the many good investment policies of the New York Life. TEMPLE REAL ESTATE & INSURANCE AGENCY, AGENTS.



Persian ...Cream

FOR HIS BIRTHDAY

For all roughness of the skin. Chilly weather causes chapped hands, face and lips, but our preparation cures them immediately. Pleasantly perfumed. Fifteen cents a bottle. Bring us your prescriptions.

Schiller & Co., Family Druggists.

First door north of First Nat'l Bank.



We Are Making A Drive

on several styles of fine carriages which we have been using as samples in our warerooms. If you can use one we will make it an object to purchase at once. The carriages are all right in both appearance and make. But we are getting new samples and have not room for both. Hence this unusual carriage chance.

J. F. SCHMALZRIED.

A. M. Lock.