

Out in Society

The Expression class of St. Agnes academy rendered a delightful program last Tuesday evening in the auditorium. A comedy entitled, "The Step Sisters", was played which proved very entertaining.

Following is a list of the characters: Mrs. Temple, Margaret Brennan, Mabel, her daughter, Philomene Daily, Era alias Ethel, Mabel's step-sister, Margaret Phelan, Miss Reid, principal of boarding school, Helen Newberry, Betty, a housemaid of Mrs. Temple, Vivian DuRay, Nora, a house maid of Miss Reid's boarding school, Bonnie Royale, Mary Anne, Mrs. Temple's cook, Mabel Carroll, Fred, a post messenger, Emily Craven, Edith, a school girl, Clare Mackin, Gertrude, a school girl, Mary Kennedy, Fanny, a school girl, Kathleen Blak, Alice, a school girl, Helen Hylton, Gypsy Chorus, Accompanist, Madeline Brennan, ACT I—At Mrs. Temple's Home, Reading, "Des You Wonder Who I am," Frances LaMon, Act II, Scene 1—Ten months later at boarding school, Reading, "Daisy Practise Hour", Helen Hylton, Reading, "Young America," Kathleen Blak, Act II, Scene 2—At Boarding school, Chorus, "Sweet and Low," Glee club, An attractive feature of the program was a fancy dance given by the Misses Kathleen Blak, Helen Hylton, Mary Kennedy, Philomene Daily, Margaret Phelan and Clare Mackin.

Mrs. W. R. Pate and Mrs. A. T. Lunn entertained Thursday afternoon at the home of the former. The party was carried out to a certain extent in a St. Patrick's scheme. Guessing games were played in which Mrs. W. E. Spencer won the prize. Mrs. McVicker won the prize in another contest. The guests came at 2:30 a. d. a luncheon was served at 5:30. Seventy-eight were invited.

The East Side Progressive club met Wednesday with Mrs. J. B. Evann and Mrs. Nels Peterson as hostesses. There was good attendance and an interesting literary paper was read. Lunch was served and the meeting adjourned to meet three weeks later with Mrs. Enoch Boyer and Mrs. Hardy as assistant.

Fred L. Hale and Grace E. Moore of Ashby were married Wednesday by Judge Tash. The groom being only 19, brought his mother with him to give her consent to the marriage. The bride is 18.

Mrs. William Rumer and Mrs. J. Kridelbaugh will entertain (the P. E. O. sisterhood) at the home of the former Monday at a 1:30 luncheon.

Arthur Melville of Broken Bow was in Alliance Wednesday on business connected with his lumber yard here.

The M. E. Ladies aid society will hold a food sale at Mallery's store Saturday afternoon.

Mrs. John Wiker returned from Mullen Thursday, where she has been on business.

Lewis Bohn, of York, is visiting his sister, Mrs. T. J. Beal.

Luckily, most people with hardening of the arteries ride in automobiles. Otherwise the announcement that garlic will cure that disease would make the streets unbearable.

The only daylight saving that is worth a thrip is that which an industrious man salts down with true service. Daylight is not saved by monkeying with the hands of a clock.

In the old days the youth was told to hitch his wagon to a star. Today it is a question of stopping him from hitching his roadster to a comet.

County Farmers' Union Will Meet Monday, March 6

The Box Butte county farmers union will hold its regular quarterly convention on Monday, March 6, at the Fairview church, according to a notice signed by Alex T. Lee, president, and H. L. Click, secretary.

All farmers interested in the potato selling organization which will be organized that day, should be present at this meeting. Delegates at previous meetings are requested to be present, also the members of the newly appointed board of directors.

Dinner will be served at 12, cafeteria style, and those attending are reminded to bring well-filled baskets. The meeting will begin at 10 o'clock, and those attending are asked to arrive on time. All farmers are welcome.

The Fairview church is located about eleven miles northeast of Alliance. Signs are erected on the Chadron highway pointing out the way to the church. There will be an all-day program, combining both business and pleasure.

Try our Special Sunday dinner. City Cafe, 222 Box Butte. 28

American women will not imitate the Paris fashion of putting wings on shoes. They put wings on their money.

Surely Rhein's harness values are appreciated. 28-29

A writer says China's great need is some one in the saddle who will provide a stable government. Something suggests that at some time this writer rode a horse.

Pages From Life Woven Into Dramatic, Absorbing Fiction!

Fannie Hurst Novelettes

In every human life is at least one big story. In this series of eight complete tales which will run in the columns of this publication, Fannie Hurst has given liberally of her talent and wide observation and has gone to very unusual sources for her material. We have the story of the little girl who presided over the "mill-ends" in a big department store and her lover in the "white goods"; the unfortunate chorus girl; the little week-day clerk who became a gorgeous butterfly on Sunday; the New York girl who discovered the West, and others—comparatively small people, but big stories. Into each gray, humdrum little existence are woven the golden threads of love and romance. They are stories of wonderful power and understanding, which once read never can be forgotten.

Do Not Miss This Remarkable Series to Appear Under the Title of "Fannie Hurst Novelettes"

INFORMATION OF ALLIANCE TO BE IN NEW TEXTBOOK

C. OF C. SECRETARY FORWARDS DATA FOR PURPOSE.

Miss Rose B. Clark of Department of Geography, Peru Normal, Writes for Information.

Mrs. Lloyd C. Thomas, secretary of the Alliance chamber of commerce, has forwarded the following letter and accompanying data to Miss Rose B. Clark of the department of geography at the Peru normal, for her use in compiling a new school text book.

"Dear Madam: We are pleased to have your request of recent date for data and information concerning Alliance, for use in a forthcoming school text on the Geography of Nebraska.

"Alliance, we believe, is the best advertised city of its size in the United States. We are proud of our little city and trust the information given you herewith will be of use to you in your forthcoming book.

We have answered your questions as numbered. If we can furnish additional information please do not fail to advise us.

1. What are your manufacturing plants? Newberry Hardware company—manufacturing tanks of all kinds and sizes from metal, all kinds of sheet iron and metal work, harness and saddles. Alliance Creamery company—manufacturing butter, ice cream, artificial ice and other products of similar nature. In the territory a short distance east of Alliance, and in its territory, are the immense potash reducing plants, elected during the war at a cost of millions of dollars and which are not active at this time due to the competition of the German potash which is being imported into this country. These plants are modern and complete, with hundreds of miles of pipe lines radiating out to the sand-hill lakes which contain the potash brine. Should conditions again become favorable, these plants will undoubtedly be operated again in a large way, or it is possible that they may be utilized for other purposes.

2. Why is our city a favorable location for these plants? Because of its geographical location and because of its railroad facilities. It is located in the center of the Nebraska panhandle and is accessible from all directions by railroad and highway. When the present contemplated highways are completed, Alliance will have excellent auto and truck roads from the east, north, west and south. The city has excellent water and plenty of it.

3. What power is used? If coal, and northern Wyoming. Coal is also used at the present time for making power dam near Guernsey, Wyo., in from the great Wyoming coal mines along the Burlington in northeastern and northern Wyoming. Coal is also shipped here from Colorado points. Alliance has a large municipal electric light and power plant, which furnishes ample power. With the completion of the great government power dam near Guernsey, Wyoming directly west of Alliance, it is expected that electric power will be transmitted to this city from that point by high power transmission lines. Should the oil wells which are now being drilled and which are to be drilled in the vicinity of Alliance prove successful in producing oil or gas, these natural fuel products will be available.

4. What automobile highways pass through the city? Have you a tourist camp? The following highways are under construction through Alliance at the present time: Potash Highway from Grand Island along the Burlington through Alliance to the Black Hills of South Dakota, G-P-C (Gulf, Plains, Canadian) from the Gulf of Mexico to Canada, across the western plains, North Star—a north and south highway running along somewhat the lines as the G-P-C, but through different towns and cities in many places. These highways, when completed, will give the people of the east and south a more direct and better route to the Black Hills and to Yellowstone park. Alliance has a tourist camp, at our city park, which is being constantly improved each year, to which tourists are welcome without charge.

5. What railroad lines have you? The Burlington. Alliance is a division and general division point of the Burlington railroad, with immense shops and yards, as well as feeding yards. It is on the Billings main line and is the terminus of the Casper and Denver lines of this railroad.

6. What are your heaviest shipments? Because of the fact that Alliance is the leading railroad point for the immense potato and small grain districts north and west and the cattle

and other stock growing districts east and south, our heaviest shipments are: Livestock—cattle and horses; potatoes, small grain hay, cream and butter, hardware and other manufactured articles.

"7. Are any of your manufactures marketed in foreign countries? None except perhaps potatoes, some of which are probably shipped into Mexico for seed purposes.

"8. What do you consider the most significant reasons for the growth of your city? (1) The progressive spirit of our business men, combined with the 'western spirit' which is common among our citizens. (2) The location, geographically and from a railroad viewpoint. (3) The continual settling up of the large amount of fertile and at present untitled agricultural lands on the prairies adjacent to the city and throughout this portion of western Nebraska. (4) The immense stores of natural resources in this part of the state.

"9. As a business man, do you think children should be taught facts of this kind. Yes. We believe that more attention should be given in our schools, for practical purposes in an educational way, to teaching the children more about their own state and nation for this kind of knowledge is undoubtedly of great practical value when they enter business life."

\$35.00 to \$70.00 for Harness is meeting with approval of buyers. Rhein Hardware Co. 28-29

Random Shots

When is a community building not a community building? And why?

NO JOKE ABOUT IT.

The Northwestern Bell Telephone company prints the following on the joke page of its house organ, under the heading, "Her Bargain Sense."

The local manager at Minden, Neb., was talking to a well educated lady subscriber about our long distance service and had told her of the rates to various towns. The woman then asked the rate to Chicago and when told said, "Is that for all day?"

Hereafter, we'll probably have to label the jokes in this column. In our last issue, we had a number of purely imaginary interviews with prominent citizens on the dance questions. A caller waxed quite wrote at something one of them was supposed to have said: "That fellow's going too far," he declared. "He'll bear watching."

We had thought that the interview we credited to N. A. K. wasn't so bad, but you never can tell. Three or four people have wanted to know what the patriarchal system had to do with dancing, and one flogger figured out that it must be some kind of a new step. She's right about it—we stepped off when we wrote it, apparently.

Roy M. Harrop is to make the race for railway commissioner with the support of the new party. We are willing that he should be elected if he'll only pay a little bill he's been owing us for about two years. Roy was then working hard for the Omaha taxpayers' league.

Political advertising is a great and glorious source of revenue, but if either Anson H. Bigelow or Roy M. Harrop want to say anything to Herald readers, it will have to be cash in advance.

Of course, Anse has never stung us yet, but we aren't going to give him the opportunity.

About the chief pleasure in life, to those of us who are on the diet, is talking about something good to eat. And never before did we realize the futility of mere words.

1922 slogan: "Back to 160 or bust."

Nebraska City Press: "A man is getting old," said Al Rottmann yesterday as he peered up at the sky, "when he is inclined, on account of the 'inclemency of the weather' to cancel a dance engagement."

Ye sporting editor will have either to desist from writing editorials on training or carry an axe.

Surely Rhein's harness values are appreciated. 28-29

That young man who is paying his way through college by shining shoes is lucky. He'll know how to make a living when he gets out.

When you see how plain, honest, sincere and simply great Marshal Foch is, it is hard to realize that he also was a college professor.

RESOLUTION

ALLIANCE, Neb., Feb. 28, 1922.— WHEREAS, It has pleased the All Wise Master in his wisdom to call to his home above, from his work in the Methodist Sunday school, its able and efficient superintendent, Brother Archie Gregory, be it

RESOLVED, That the Baptist Sunday school extend its sincere sympathy to the Methodist Sunday school, and to the wife, children, relatives and many friends of the deceased, ever remembering that at the end of a life like his,

"There is no death, the stars go down, To rise upon some fairer shore, And bright in Heaven's jeweled crown, 'They'll shine forever more.' Signed by the committee from the

Sunday school of The First Baptist church, Alliance,

H. HIRST, A. H. ROBBINS, E. G. LAING, Committee.

\$35.00 to \$70.00 for Harness is meeting with approval of buyers. Rhein Hardware Co. 28-29

Those who see and buy Harness from Rhein say, "Best value we have seen." 28-29

TOO LATE TO CLASSIFY
FOR RENT—Well furnished house-keeping apartment. One block west of postoffice. 114 1/2 West 4th. 281f

Thiele's GIFTS THAT LAST Thiele's



Her Birthday is Next Month

And when Mother has a birthday it is a real family affair. Her age may be a secret, but her birthday deserves more than ordinary attention.

Her appreciation of a gift of jewelry as an addition to her silverware collection, is an inspiration she will forever enjoy.

And nothing is too good for Mother, so you will naturally come here for her gift, knowing that our stock consists of only the best.

Brooches, \$5 up Sets of Silver \$12 up

BRIGHTEN UP YOUR HOME

Alabastine will do it and at a very nominal cost too. Just mix it with cold water and it's all ready to apply. All the colors at Thiele's.

THIELE'S

The Store With a Guarantee Without Red Tape

Canned Fruits SPECIAL

Saturday

See Our BARGAIN COUNTER OF SALMON AND FRUIT

Special low prices in our MEAT DEPARTMENT TOMORROW.

Boiling Meat, per lb.10c
Roasts, per lb.15c

We Sell SKINNERS' The Highest Grade Macaroni Egg Noodles, Spaghetti and other Macaroni Products

Mallery Grocery Co.

Quality Grocers

Telephone Your Orders No Charge for Prompt Delivery

Herald Want Ads are read.



Printing Safeguards Your Money

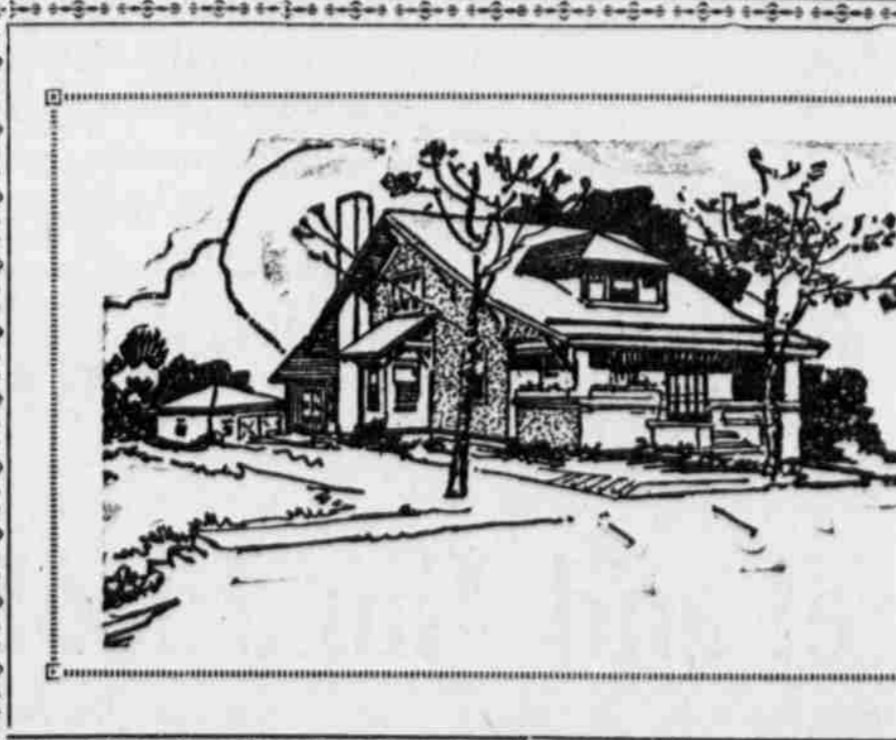
Protect your cash not only with bolts and bars and banks but with businesslike printed forms and records for every transaction you undertake.

We can show you a paper—

Paper—that betrays erasure and prevents fraudulent alteration of your checks, notes, drafts and receipts.

For letterheads and general printed forms we use and recommend a standard paper

HAMMERMILL BOND that we know will give you satisfaction.



HERE'S YOUR HOME! LOOK IT OVER BEFORE YOU BUILD IT

"Just any old house" is not good enough for you. You want a real home—artistic, beautiful and architecturally correct—yet not too large or expensive.

The Forest Lumber Company has made it possible for you to obtain a modern, architecturally correct home at reasonable cost. MORE—You can visualize it before it is built.

There are 500 up-to-date designs from which to choose. Call at this office for additional information.

Special architectural assistance to all customers gladly given.



Forest Lumber Co.

WM. BEVINGTON, Mgr.
Exclusive Representatives of the National Builder's Bureau