

# IMPERIAL THEATRE

**Tonight, Jan. 13**

WM. A. BRADY Presents

**Evelyn Greeley in  
"Me and Captain Kid"**

By HAMILTON THOMPSON  
COMEDY—"A LION IN THE HOUSE"

A scream from start to finish  
International Screen Magazine  
Admission—15c and 25c

**Wed. January 14**

MATINEE 3 P. M. NIGHT 7:30

GOLDWYN Presents

**Louis Bennisson in  
"A MISFIT EARL"**



LOUIS BENNISSON in "A Misfit Earl"  
A Detamod Production. Released through GOLDWYN

A comedy drama in six acts that will interest the audience from beginning to end; a story of a wild and wooly cow puncher who is brought in to English society and turns Lord for a day.

—Added Attraction—  
Fatty Arbuckle in

"A RECKLESS ROMEO"

Midland Lyceum Bureau Presents

"THE WAR PLAYERS and SINGERS"

In a high class attraction which comes guaranteed by the leading Chautauqua circuits.

Adm.—Child 25c, Adults 55c

**Thursday Jan. 15  
MAURICE TOURNIER**

Producer of "MIRACLE MAN"

Presents the Great Drury Lane Melodramatic Success

**"The White Heather"**

A PARAMOUNT-ARTCRAFT SPECIAL

By Cecil Raleigh and Henry Hamilton

Produced by Maurice Tourneur Productions, Inc.

How could she prove that she was this monster's legal wife? The only proof that a court would recognize lay at the bottom of the mighty sea, eight fathoms down.

See the tremendous climax to her quandry! See the staggering scene staged in the ocean depths, where the search for a proof of her marriage leads two men to grapple in death combat, that an innocent woman's faith in all mankind might not be shattered.

By special arrangement the undersea scenes in "The White Heather" were produced by the use of the Williamson Submarine Tube and patented inventions, the only means by which such undersea scenes are made possible.



H. E. HERBERT  
MAURICE TOURNEUR'S  
"The White Heather"  
Paramount-Artcraft Special

COMEDY SATURDAY

Admission—25c and 35c

COMING FRIDAY, JAN. 16

Clara Williams in  
"CARMEN OF THE KLONDIKE"

## OIL NOTES

Reports from the Griffith Oil company, which has many stockholders in Alliance, indicate that the company affairs are in excellent shape and that prospects for an increased value in the holdings are good. In addition to holdings in other localities the Griffith company has 640 acres adjoining the holdings of the Carter Oil company in the Bolton field, twenty miles southwest of Casper. The Carter company has a well down 1700 feet in this field, close to the Griffith holdings. The New York Oil company has a well in its holdings in the same field in which oil is standing several hundred feet in the casing. In the Midway field, between Casper and Salt creek, the Griffith company has several hundred acres adjoining drilling now going on by the Mid West Oil company. The Griffith company also has a one-half interest in 400 acres in the Big Muddy field, with development going on around it in several places.

A decision of much importance to operators in the Osage oil field was given by District Judge E. C. Raymond at Newcastle last week in which he held that original locators of oil land, having brought in a discovery well in commercial quantities, are entitled to possession of the land. Judge Raymond found in favor of J. D. Mounts, representing Deadwood interests, Briggs and McKenna, oil operators, defendants in a suit brought to restrain them from drilling and aimed to cause them to vacate the land.

The injunction, brought by G. F. Sparks, operator in the Osage field, was brought, it is said, as the result of discovery of oil on the southeast half of section 6, township 46, range 63, by the Briggs interests.

According to testimony disclosed at the hearing of the suit it was

shown that J. D. Mount was the original locator. Later the Armstrong company, represented by the Bock brothers, of Sundance and Newcastle, located over the original location and the property was leased by G. F. Sparks, who immediately pulled a rig on and started to drill.

When the drill has been sunk to a depth of ninety-six feet, it is said the Briggs interests, under lease from the original locator, J. D. Mount, also moved on to the property and struck oil at a depth of 296 feet, before the Sparks company had touched the sands. The injunction suit and an order to vacate was the result.

The holding of the court was that the original locators having reached the sands were entitled to the ground. Failure to heed the injunction order of the court in the case of J. D. Mount, Briggs and McKenna brought the operators before the court on a charge of contempt and they were only released after a stern warning from Judge Raymond that the orders of his court must be obeyed and that a second offense of this nature by anyone within his jurisdiction would bring the full penalty of the law.

Pipe has been ordered for the laying of four miles of pipe line in the new Osage field, by the McWhorter Oil and Refining company; according to E. W. Smith, representative of the company. The work of constructing the line will begin immediately upon the arrival of the supplies which, it is said, will be within a week or ten days.

The line will be constructed of four-inch pipe and the laterals will be two inches in diameter. Pumps will be placed through the field to collect the oil which will be sent into four-inch pipes through the laterals and loaded at the Osage station.

A carload of boilers to be used in the new Osage refinery have arrived from Joplin, Mo., according to Mr. Smith and will be the same as constructed by the Midwest at Casper, will be started immediately. The supplies are now being unloaded at Osage.

## FARMERS ATTENDED FREE TRACTOR SCHOOL

Box Butte County Farmers Exhibiting Interest in the Operation of Newest Machinery

Under the auspices of the J. I. Case Threshing Machine company, there was held on Thursday, Friday and Saturday of last week, at the Rumer garage in this city, a free tractor school which was open to everyone interested. Instruction was not limited to the company's machine, but those of all makes were discussed. It was the intention to make the school of practical value to every farmer who owns or expects to purchase a tractor, and the course dealt with the construction and operation of the machines. The company is holding some two hundred of these schools during the winter at points in the United States and Canada.

The work of instruction is done by farmers, men with actual experience in the running of machines under all sorts of conditions. It has been the plan to make the course fit local conditions, and the farmers of the county have shown considerable interest.

Thursday evening "making the tractor," which has been pronounced the best commercial film ever produced, was presented at the garage. This is said to be the equivalent of a trip to the factory.

The following instructors were present: J. H. Kenneth of Dixon, Ill., a plow expert who has spent forty-three years with the Gould-Detour Plow works and is acquainted with conditions in practically every agricultural county west of the Missouri river; N. B. Weyand, traveling expert out of the Lincoln branch; Angus McKay, expert from the Billings branch; J. Leo Ahart, of the service department of the company, who is in charge of the school. Mr. Ahart and Mr. Kennedy usually go only to the towns which have branch houses, but Alliance was deemed of sufficient importance for the whole corps of instructors to be present. The school will go from here to Columbus.

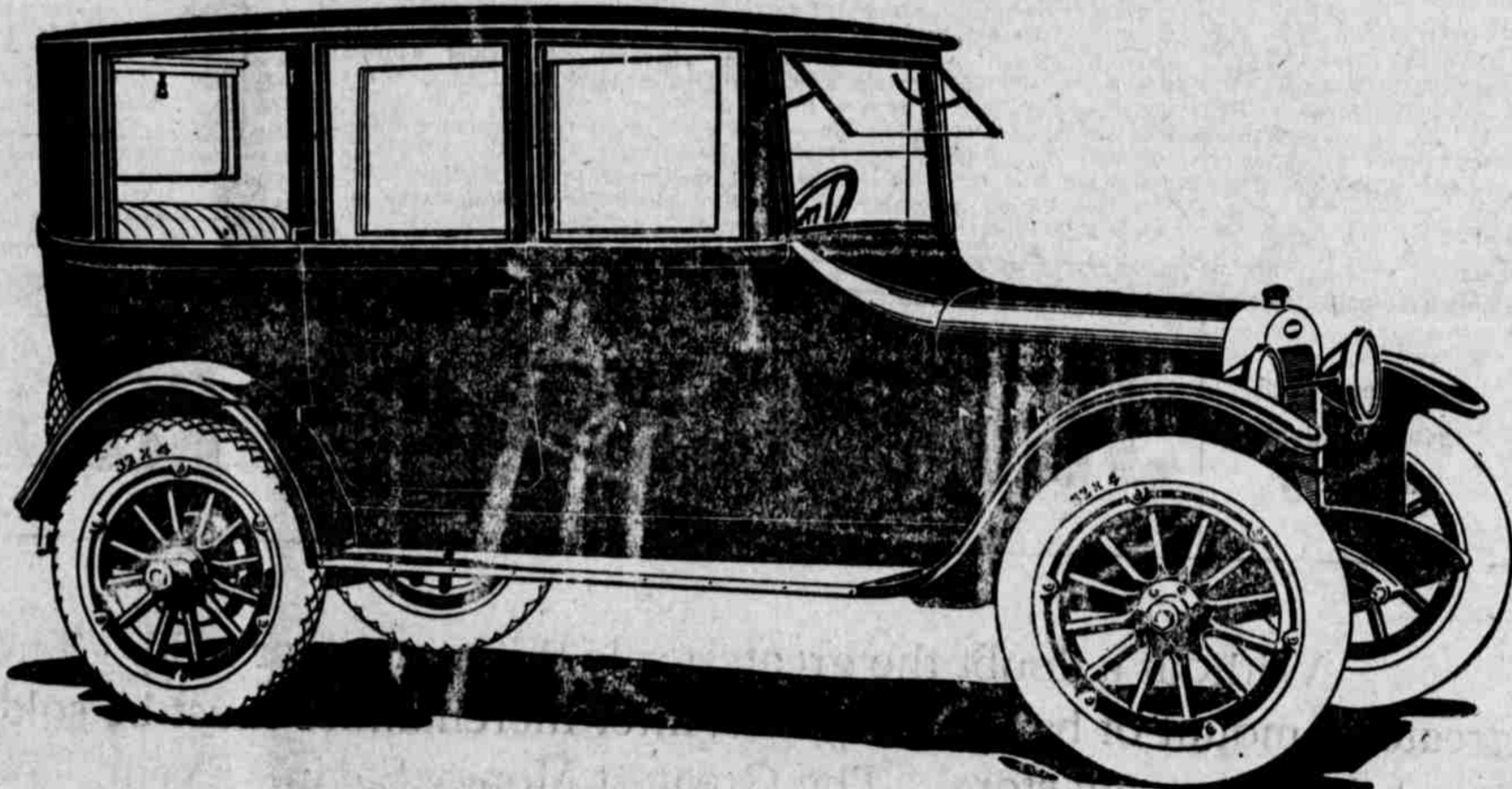
Newcastle is elated over the fact that on December 16 President Wilson issued an order for the moving of the United States land office from Sundance to the former city. The land office has been located in Sundance since 1890.

## Hotel For Sale

This includes prosperous hotel business, hotel building and five town lots; fifteen bedrooms; dining room serves 150 meals a day at the present time. Terms will be reasonable. Parties interested inquire at or call

**LAKESIDE HOTEL**  
Lakeside, Nebr. Same Hatanaka, Prop.

OAKLAND OWNERS REGULARLY REPORT RETURNS OF FROM 18 TO 25 MILES FROM THE GALLON OF GASOLINE AND FROM 8,000 TO 12,000 MILES ON TIRES



The New Oakland Sensible Six Sedan

# OAKLAND SENSIBLE SIX

Every essential convenience, from mechanical lifts for the windows in its double-latch doors to an inconspicuous heater for use on cold days, has place in the equipment of the new Oakland Sensible Six Sedan. And being of solid body construction, and built upon the standard Oakland chassis, its range of activity is fully as great as that of the open car.

Many men and women, who could well afford costlier cars, are driving Oakland Sensible Six Sedans. Their selection was prompted primarily by the unmatched value that this handsome, sturdy car represents and the unusual operating economies that the Oakland Sensible Six effects over a long lifetime of efficient performance.

Touring Car, \$1075; Roadster, \$1075; Coupe, \$1825; Four Door Sedan, \$1825.  
F. O. B. Pontiac, Michigan. Additional for Wire Wheel Equipment, \$75.

# Sturgeon's Garage