

TICKEY CATTLE FOR IMMEDIATE SLAUGHTER

(Continued from Page 19).

Caribbean Sea. Pursuant to the purposes and provisions of this act, joint regulations have been issued, effective October 1, 1917, prescribing the conditions under which tick-infested cattle may be imported.

For the protection of domestic cattle from disease which might be brought in by the imported animals and to make certain that only wholesome meat shall be produced from that source, the requirements prescribed by the act and by the regulations governing the importation and slaughter of these cattle are very strict. Cattle may not be imported from any of the countries mentioned in which it shall be determined by the secretary of agriculture that foot-and-mouth disease exists; nor may cattle be imported which are affected with or have been exposed to any disease other than splenic fever. They can be imported only into those parts of the United States below the southern cattle quarantine line at the ports of entry designated in the regulations, which are as follows: Galveston, Port Arthur, Texas City, New Orleans, Mobile, Pensacola, Jacksonville, Tampa, and Savannah.

A permit from the secretary of agriculture is required for each consignment of cattle offered for importation. The cattle must be slaughtered at an official slaughtering establishment at port of entry immediately after importation and in accordance with the federal meat-inspection act and regulations. They are required to be inspected upon arrival at port of entry and, after unloading, to be held in quarantine for not less than five consecutive hours of daylight, during which time they shall be subjected to such inspection and tests as may be necessary. Movement of the cattle from the vessels to the slaughterhouse at port of entry is required to be carefully supervised and all platforms, chutes, and conveyances used in handling the animals must be disinfected. The hides of the cattle, after slaughter, are required to be disinfected, and if cattle having anthrax are found their hides and carcasses must be destroyed.

The provisions of these regulations do not apply to tick-infested cattle imported from Mexico into Texas for purposes other than immediate slaughter at port of entry, such importations being governed by the amendment to the act of August 30, 1890, approved March 4, 1911, and the regulations thereunder.

GENE HEATH'S NON-PAREIL GRIP

(Continued from Page 19).

some fair agricultural lands surrounding her, but nothing compared with the Box Butte country, and were this trade withdrawn it would be a severe blow to the place. Chadron is a town of our own county, 10 miles nearer, a larger place and of course carries a large assortment of supplies. Chadron is working for our trade. To be sure the rough country of the Pine Ridge lies between Chadron and the river, but she already has a very fair road, and the fact of its being 10 miles nearer is quite an item.

Hay Springs has never merited our patronage; has always talked that we were compelled to trade with her. It has been reported to us that land seekers, on their road to the Box Butte country, have been erroneously advised by Hay Springs parties, to go no farther as the land in this country was all taken up, when in reality there are yet free homes for thousands, as every business man in Hay Springs well knows. Besides, there are a set of lawyers and land sharks in Hay Springs, some of whom (we can mention names when necessary) have already "shown their teeth" in business transactions with several of our citizens. We have a few advertisements from Hay Springs which bring in a small revenue, but we wish this understood, that we do not canvass for patronage at the price of robbing our citizens.

Exhibition and Exposition.
While the two words, exhibition and exposition, in modern usage when applied in the sense of a public show or display of natural or artificial productions, are used interchangeably, yet in some cases the words could not be used interchangeably without altering the meaning of both phrases, as an "exhibition game of ball" conveys an idea very different from that contained in the phrase "an exposition game of ball." As contrasted with exposition, exhibition deals more often with visible things and exposition with things mental; as an exhibition of machinery; an exposition of a text or doctrine of philosophy. Hence in part, perhaps, the disinclination of some to the word exposition for a show.

POTASH PROSPECTING ON PUBLIC LANDS

(Continued from Page 19).

lands, of which there are now many millions of acres under withdrawal. Bills to permit the leasing of these lands have twice passed the house, but have not been passed by the senate.

Prior to the war practically the world's supply of potash was developed in Germany, which has immense deposits of the valuable mineral. At this time Germany is boasting that, on the termination of the war, the world again will have to obtain its potash supply from her. It is known, however, that large deposits of potash exist in this country, and under the law and under the regulations issued exploitation of these beds will begin immediately. Permits may be issued to citizens,

associations and corporations of the United States for the exploration of not exceeding 2,500 acres each of land in compact form, the permits to be for a period of two years. If the permittee discovers potash in commercial quantity and quality he will be entitled to a patent for one-fourth of the area of his permit, the remainder to be subject to lease by the government. Applications for permits must be filed in local United States land offices.

In a few days Secretary Lane will issue the regulations to govern the leasing of public lands containing potash deposits.

POTASH FROM CEMENT DUST

That between 71,000 and 75,000 tons of available recoverable potash, about one-third of the quantity normally consumed in the United States, exists in the dust passing through or retained in the flues of the cement manufacturing plants of the country

is indicated by analyses made by the Bureau of Soils of the United States department of agriculture, according to a recent publication, Department Bulletin 572. By increasing the percentage of potash volatilized, by the addition of substances which will not affect the equality of the cement, the recoverable potash in flue dust can be increased to more than 100,000 tons annually, or nearly one-half of the normal consumption of potash in the United States, according to the bulletin.

Numerous plants have installed electrical precipitation equipment to recover the flue dust, and are finding the installations good investments, the bulletin declares. Some plants are recovering 5 per cent of the potash present in the raw materials fed into the furnaces.

The dust recovered in the flue stacks, connecting kilns, and precipitation apparatus is about 4.5 per

cent potash, while that recovered from the precipitation apparatus itself is about 11 per cent potash. The dust may be used as a source of cement material, may be disposed of as collected for use as a fertilizer or in fertilizer manufacturing, or may be leached to prepare concentrated potash salts.

REPEAL SWINE ORDINANCE

Chadron Chronicle:

Chadron has one ordinance which, as a war measure, we would heartily favor the repeal of, for a year at least—the prohibiting of keeping hogs within the city limits. The ordinance is a splendid one in times of peace and adds greatly to the sanitation of the town, but our nation is some 20 per cent short on porkers at the present time. The letting down the bars for the keeping of a backyard hog would be only following the

example set by many large cities of late, to aid in replenishing the world's hog supply. There is hardly a family that could not raise and keep one pig on the garbage from the kitchen, without much outlay for feed. This appears to us as both conservation and although it might appear to some as a step backward, it would be for a great cause in which every one of us is vitally interested. By keeping the pen clean the presence of a porker in the back yard would not become obnoxious.

His "Womanish Soul"

The French novelist Rolland, speaking of one of his characters in the great book, "Jean Christophe," says: "His was a womanish soul, with its eternal need of loving and being loved." For a man to be effeminate is always a reproach; to have this touch of womanliness is something quite different, and may go to the making of a very fine manhood.—Chicago News.

Shop Early

OUT-OF-TOWN CUSTOMERS

CAN SHOP BY MAIL. ANY ARTICLE LISTED HERE WILL

BE SENT TO YOU PREPAID IF

YOU INCLOSE THE PRICE

AND MENTION THE HERALD.



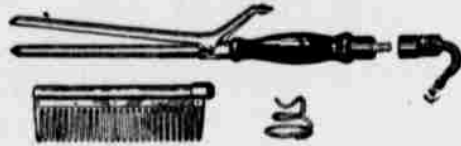
Suggestions

In Keeping With

The Spirit of Christmas



"Universal" Electric Curling Irons



E99021—Electric Curling Iron, with hair-drying attachment as illustrated. No. E99021 \$5.00
As above, without attachment, No. E99021 \$4.25

Sent by parcel post anywhere if you mention The Herald.

Electric Chafing Dishes.....\$12.00
Hot Point Tourist Set.....\$5.00
Electric Coffee Machines.....\$16.00

For the cosy breakfast table, a welcome addition is an Electric Toaster; nickel-plated, with black enameled base. Complete with six feet of cord, and plug. Special at.....\$5.00
Many attractive articles in Electrical gifts.

Useful Gifts

That Save Waste
Conserve Man's Power
Increase Efficiency
and Stimulate Thrift
are appreciated in
these times
and they count

In the Nation's Service



Electrical Devices are Sensible Gifts

E9637—Percolators, with an Electric Attachment, are nothing short of perfection. The coffee percolator illustrated is nickel-plated, and the handle is ebonized; capacity nine cups. Complete with six feet of cord, and plug. At the special price of.....\$10.00

E984—A dainty and appetizing meal can be quickly prepared on an Electric Grill; nickel-plated, with black enameled base, and ebonized handles; four heats. Complete with six feet of cord, and plug. Round shape. At.....\$7.50

E981—Oblong Shape Grill, one heat, otherwise as No. E984; also makes a good toaster. Price.....\$6.00

Sent prepaid anywhere within 100 miles of Alliance to out-of-town customers, if the full amount is inclosed with order. Mention "saw it in Herald."

WAGNER CAST ALUMINUM WARE

"From Generation to Generation"

THE SAFEST WARE MADE

Aluminum is unquestionably the most desirable metal for cooking purposes, since—unlike iron, tin, copper or enamel—it does not rust or form poisonous compounds with fruit or vegetable acids.

Wagner Ware is the highest grade of cast Aluminum on the market. Such a gift solves the rather difficult problem of "what shall I give my wife for Christmas?" Come in and let us show you.

Tea Kettles
No. 7. Price \$4.50 Percolators. \$7.00
No. 8. Price \$4.80 Fry Pan.....\$2.45
Double Cookers.....\$3.00

"STRUCTO" Engineering for Boys

Just received a shipment of STRUCTO Sets, including the new Auto-Builder, the latest thing in Mechanical Toys.

No. 10 Auto Builder.....\$ 5.00
No. 12 Auto Builder..... 10.00
Cadet Structo Outfit..... 1.00
Cadet Structo Outfit..... 1.00
No. 2 Structo Outfit..... 2.50
No. 1A Accessory Outfit..... 1.50
Structo Transformer..... 2.00
Set Auto Wheels, complete... 1.00
Structo Motor..... 2.25



The Light that Says "There It Is"

We are distributors for the famous Eveready Daylo.

Some of the most popular Daylo styles, with prices.

No. 6961—Hinged Bottom Vest Pocket.....\$.75
No. 6962—Hinged Bottom Vest Pocket..... 1.00
2631, Nickel-plated Tubular... 1.50
2632, Nickel-plated Tubular, as illustrated..... 1.75
2633, Nickel-plated Tubular... 2.40
2630, Nickel-plated Tubular... 1.25
Above complete with Tungsten batteries. Sent post-paid upon receipt of price. Write for complete descriptive folder.

Give Her a Complete "Wear-Ever" Alluminum Set For Christmas

Does she have EVERYTHING SHE NEEDS, or does she have to just make the thing that she has "do?" We are showing a splendid line of Aluminum in

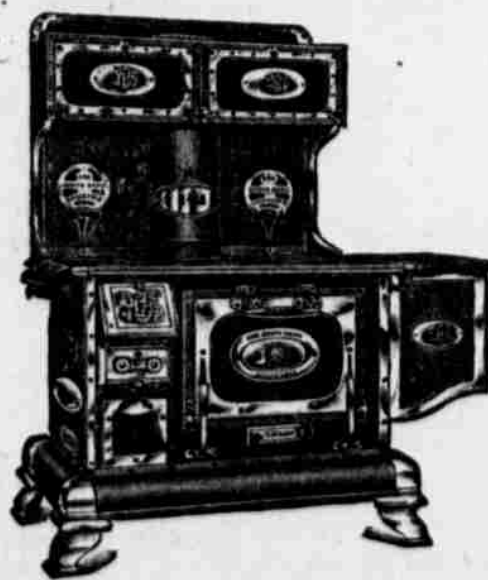
ROASTERS, Cake Griddles, Fry Pans, Tea Kettles and complete sets of Aluminum. Buy your wife a complete set of Shiny Cooking Utensils that will be the delight of her heart—and she'll always have the right utensil for every purpose.

"Royal Rochester" Caseroles



Caserole cooking enables one to make appetizing dishes from cheaper cuts of meat and is, therefore, a large factor in food conservation.

No. 1165—Royal Rochester hand-painted Insert.....\$7.00
Pyrex Inserts, silver plated frames.....\$6.00 up
No. E138R—Guernsey Brown, white lined..... 2.50
Weeler, as illustrated above..... 1.50
Heat-proof China Salad Dish, hand-decorated..... 5.00
Silver-plated Bean Pot, universal insert..... 6.50
Nickel Sandwich Plates..... 2.50
We have many other attractive designs.



Let Santa Bring Her A New Range

IT ISN'T HARD FOR YOU TO IMAGINE HOW pleased she will be—how she will beam with delight at its smooth-polished top, its plain nickel trimmings; no corners to catch dirt. You are invited to drop in and see our complete line of South Bend Malleable Ranges. Prices and terms to suit all.

Newberry's
Hardware Co.

ONEIDA COMMUNITY RELIANCE PLATE



Andover Pattern

If you are looking for an unusual gift, come and see our showing of Community Silver.

ANDOVER, BUTLER GREY RELIANCE PLATE

No. 58602—Six Tea Spoons.....\$1.75
No. 58605—Six Table Spoons... 3.50
No. 58603—Six Dessert Spoons... 3.25
No. 58629—Six Iced Tea Spoons... 2.25
No. 58650R—One Sugar, Spoon, in lined box..... 1.75
No. 58607—Six Medium Forks... 3.50
No. 58611—Six Hollow-handle Knives..... 6.00
No. 58695B—One Butter Knife... .75
No. 58742—Set of 6 H. H. Knives and 6 Bat Forks, in lined box 9.75
No. 58667—One Cold Meat or Salad Fork, as illustrated... 1.00

Any of above sent postpaid to out-of-town customers on receipt of price. Reliance Plate at your service for 25 years.