

LIVE STOCK PRICES AT SOUTH OMAHA

Cattle Market About Steady; Moderate Receipts

HOGS FROM 5-10c HIGHER

Monday's Sheep and Lamb Run consisted Mostly of Range Lambs, Prices Being Strong to 10c Higher. Sprinkling of Oregon and Idaho Wethers and Ewes, Steady to 10c Up.

Union Stock Yards, South Omaha, Nebr., June 12, 1916.—The week opened with a very moderate run of cattle, 144 loads, or about 3,600 head. The demand seemed strong for the choice heavy cattle from both shippers and local dressed beef men. Receipts were not as large as dealers expected and the quality of the offerings as a rule was not as good as last week, but reports from outside markets were favorable for the desirable offerings. Choice heavy beefs sold around \$10.50@10.75. Fair to pretty good beefs, and some yearlings sold at \$9.75@10.25. Good cows and heifers were scarce, but anything good enough to attract competition brought full steady figures.

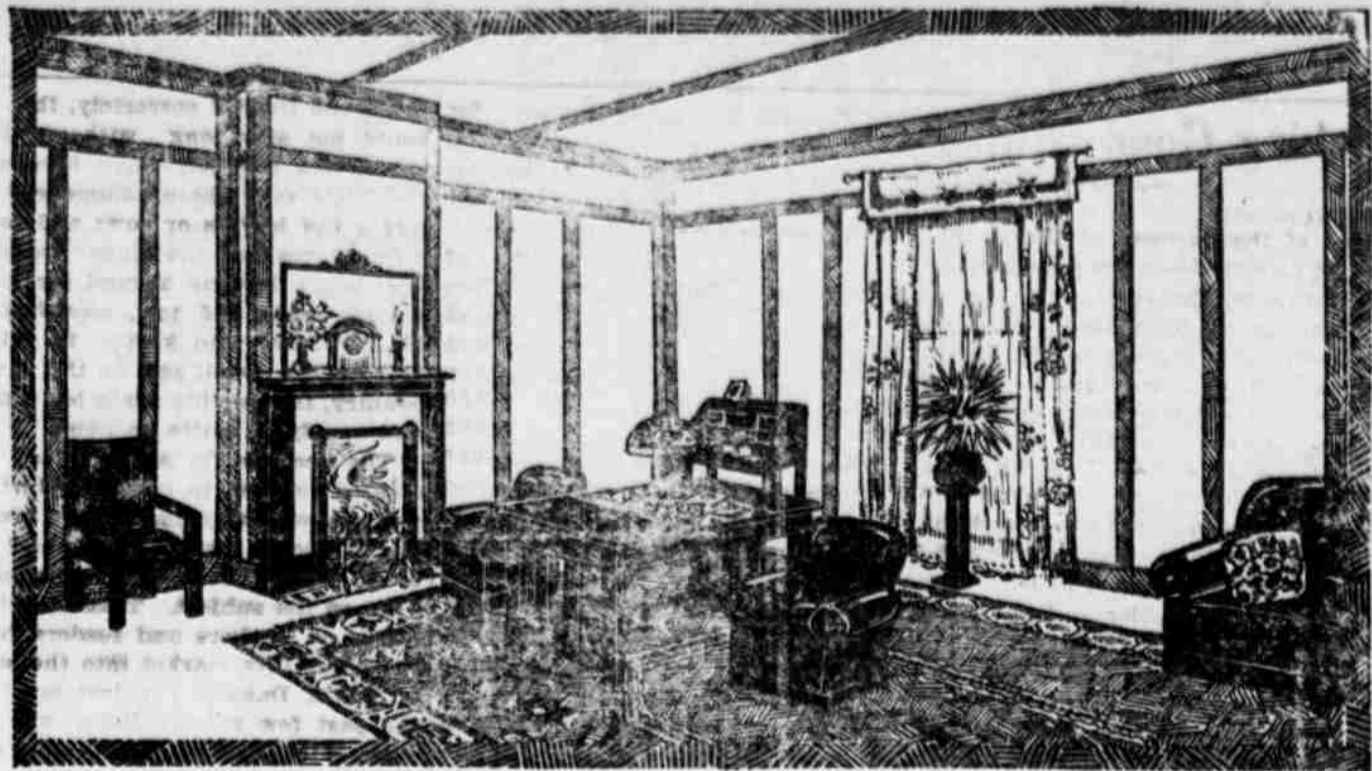
Quotations on cattle: Good to choice beefs, \$10.40@11.00; fair to good beefs, \$9.50@10.25; common to fair beefs, \$8.25@9.40; good to choice yearlings, \$9.75@10.55; fair to good yearlings, \$8.75@9.50; common to fair yearlings, \$7.25@8.50; good to choice heifers, \$8.00@8.75; good to choice cows, \$7.75@8.50; fair to good cows, \$6.50@7.50; canners and cutters, \$4.00@6.25; veal calves, \$9.00@11.75; bulls, stags, etc., \$6.50@8.50.

The shipping demand for hogs for Monday was very strong, prices paid being 5c higher right from the start than the close of last week. The packers also had liberal orders, as they came onto the market in competition with the active buying for shipping account, the market became fully 10c higher, and closed strong at the advance. The market was very active right from the start, and everything was cleaned up at an early hour.

The receipts of sheep and lambs for Monday consisted of only 19 cars. Out of the 19 cars reported in there were 16 cars of range spring lambs and ewes with a few yearlings and wethers. The market was rather slow at the start, but later on fairly active as far as range stock was concerned, prices being anywhere from steady or strong to as much as 10c higher. Best Idaho spring lambs brought \$11.40, the high of the day. A few Idaho and Oregon yearlings sold up to \$8.75 with old wethers at \$7.75. Some Idaho ewes sold at \$6.60 to killers with feeder ewes at \$5.00@5.35.

Quotations on sheep and lambs: Lambs, spring, \$8.00@11.40; lambs, fair to choice handy, \$9.25@10.30; lambs, fair to choice heavy, \$8.50@9.90; yearlings, fair to choice handy, \$8.25@8.75; yearlings, fair to choice heavy, \$7.00@8.00; wethers, fair to choice, \$6.75@7.75; ewes, good to choice, \$6.75@7.25; ewes, fair to good, \$5.00@6.75.

Life Shaped by Thoughts.
A particular train of thought persisted in, be it good or bad, cannot fail to produce its results on the character and circumstances. A man cannot directly choose his circumstances, but he can choose his thoughts, and so indirectly, yet surely, shape his circumstances.—James Allen.



DISTINCTIVE DECORATIVE DESIGNS JUST FOR YOUR HOME—FREE!

It is a surprisingly simple and easy matter to beautify one or all the rooms in your home with Cornell-Wood Board.

Cornell designers will show you exactly how you can beautify and modernize your home and tell you just what the cost of material will be. No matter if you want just an idea, a few suggestions for a single room, or a complete decorative scheme for your entire home, we can give you just what you desire.

This service is absolutely free and places you under no obligation whatever.
ASK YOUR DEALER.

Cornell-Wood-Board

For Walls, Ceilings and Partitions

An endless variety of panel effects is made possible by the use of Cornell-Wood-Board. Cornell-Wood-Board nails right to the studding or over old walls and stays there. Takes paint or kalsomine perfectly.

Guarantee: Cornell-Wood-Board is guaranteed not to warp, buckle, chip, crack or fall.

PRICE: 4 CENTS PER SQUARE FOOT in full box-board cases

Manufactured by the Cornell Wood Products Co. (C. O. Friable, President), Chicago, and sold by the dealers listed here.

S. A. FOSTER LUMBER COMPANY

Alliance, - - - - - Nebraska

Body's Need of Liquid.

There are many reasons why plenty of water is good for you. In the first place the human body is two-thirds water. The blood is four-fifths water the lymph or fundamental fluid being a colorless liquid in which are the red corpuscles which give blood its characteristic color. The muscles are two-thirds water and all of these substances demand replenishment constantly, and exercise their functions most readily when the stomach is well supplied with water.

What Has Become of Them?

Someone asks what has become of the people who could formerly be entertained for hours by asking and answering conundrums. Well, they are too aged to go out much now and their children find eating Welsh rabbits less fatiguing to their overstrained intellects.—Janesville (Wis.) Gazette.

Optimistic Thought.

You may take the greatest trouble, and by turning it around find joys on the other side.

Amphibious Devilfish.

In Japan devilfish weighing up to 200 pounds are sometimes caught. These fish are amphibious; they are often seen wabbling on their tentacles like giant spiders, in search of patches of sweet potatoes.

Mohammed's Warning.

"Beware," said Mohammed to his followers, "of marrying a toadstool woman, a woman that sits and sits, and spends all thy substance on jewels and perfumes and rich stuffs."