

Sioux City Live Stock Market

Fall Feeder Show

Sioux City Stocker and Feeder Show, Oct. 16 to 18, Will be Great Event for Ranchmen

Stocker and feeder cattle shows, accessible to the ranchmen of western Nebraska, are sure to attract their attention and interest. Some cattle from the ranches go direct to the packing houses in good condition for beef, but it is to the feeder buyers and the demand that they make for Nebraska ranch cattle that stockmen look for best prices.

Sioux City is favorably located to make a success of the Stocker and Feeder Show enterprise, which is being launched at an opportune time. For the past several years it has been

duction. It is no new announcement that the bulk of these cattle and sheep must come from the range sections of the west from western South Dakota, from Montana and from Wyoming. True, there is a slight tendency among farmers of the cornbelt to raise two calves this year where they raised but one last year. But, the time when the farmer will, as a rule, breed and raise the cattle for his cornbelt feed lot is as yet a long way off, if, indeed, it is ever to come. As long as the range is a producer of cattle and sheep, above feeding capacity in the comparatively small areas of the mountain states where grain feeds are produced, just so long the cornbelt farmer will be calling on the range man to furnish stock for his feed lots.

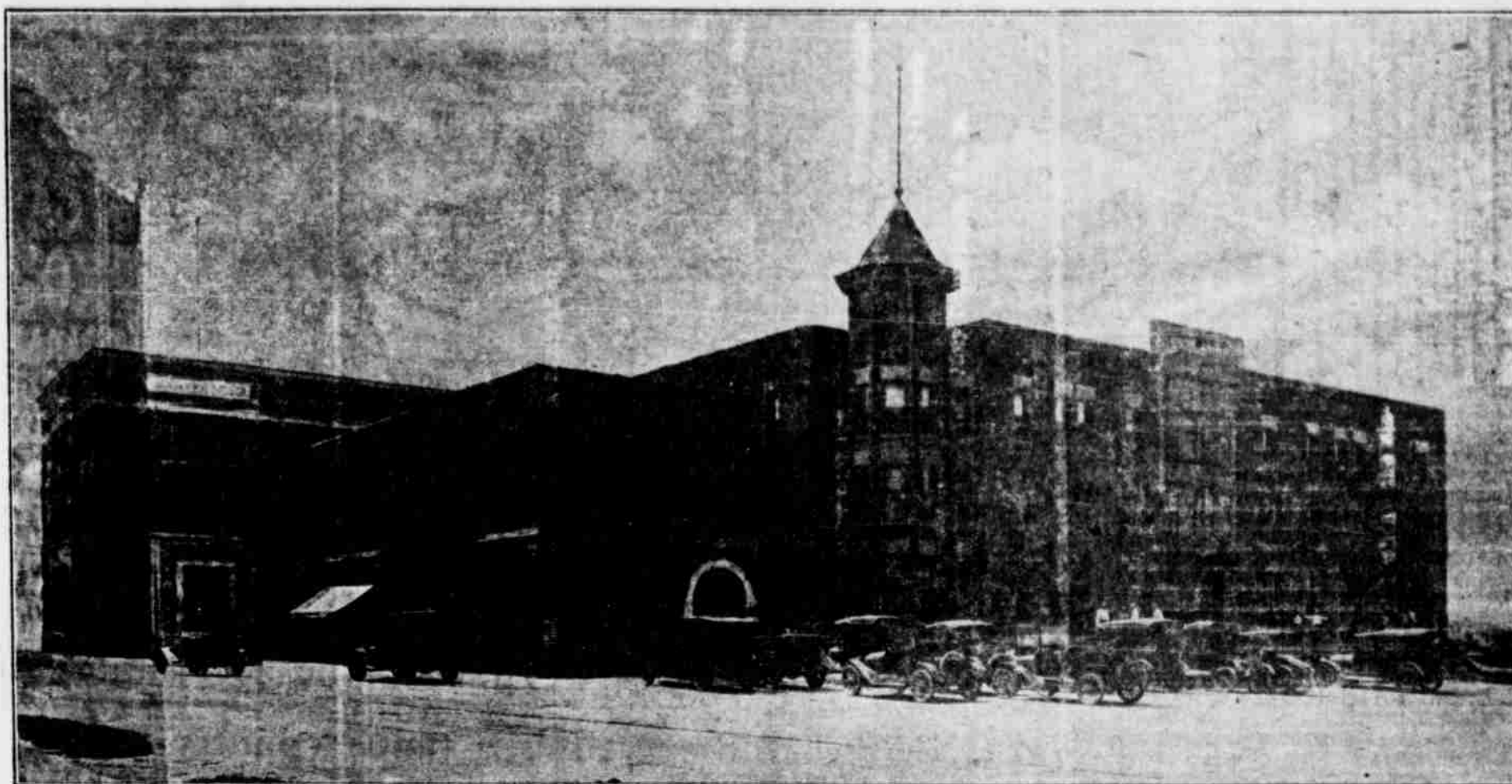
came the feasibility of an annual Stocker and Feeder show. At the beginning of this year the project took on a definite form. An organization for the purpose of holding the first show was effected and dates set for holding the show next fall. The Stock Yards company and the Live Stock exchange joined in the project. A fund of \$3,000 was provided to be disbursed in premiums for stock and feeder cattle and feeder sheep and lambs. The premiums are large enough to prove an attraction to owners of cattle or sheep of feeder grade and the auction feature of the show will guarantee attractive prices to all cattle and sheep that will be in the show. It is a good time right now to begin shaping for sending some good range raised stock for

Making Good Growth

"Home Market of the Great Northwest" Making Rapid Progress in Permanent Development

The amount of business transacted in a year's time at a great live stock market is remarkable. Only four other live stock markets in this country are doing a larger business now than Sioux City, she having passed other markets in volume of business now stands fifth.

Until making some investigation or research for information, one will have an entirely too limited idea of the value of the live stock passing thru the Sioux City market. One firm whose advertisement appears in this paper transacted business last



SIoux CITY LIVE STOCK EXCHANGE—ONE OF THE FINEST BUILDINGS OF ITS KIND

On the left-hand side is shown the east end of the new addition, made necessary by the increasing business of this market. The ground floor of this part of the building is occupied by the Live Stock National Bank of Sioux City.

considered by stock yards interests that an exclusive stocker and feeder cattle and feeder sheep show should be held at this point. This market is located in the center of a vast cornbelt feed lot. For two hundred miles north and northwest of Sioux City it is one vast grain field. It is a hundred miles south and east from Sioux City before the territory of another market is reached, and this is all one great grain section. Put one car load of cattle in a feed lot in the center of each half-section of land in this territory and the total of carrying and feeding capacity in this, Sioux City territory, and the total would run into astounding figures—and every half-section of this territory is equal to more than one car of cattle.

Every year sees this section making advancement toward fuller development of its producing capacity. Every year calls for more cattle and sheep for pastures, stalk fields and feed lots in order to make the most of the capabilities of the land for pro-

When the range man has a herd of well bred, thrifty cattle for sale—cattle that are young and in just good feeder flesh—he wants to go where the best possible buyers are to be found. What better suggestion than the market situated in the midst of a great corn field? This is just what Sioux City offers. And it was with the object of getting the range breeder and raiser of cattle and sheep and the cornbelt farmer into closer touch with each other that the Stocker and Feeder show was projected.

The idea is not a new one, nor one of spasmodic growth at the Sioux City stock yards. The project has been in a developing stage for the past two or three years. But not until last fall did it begin to take on definite form. It became evident more than two years ago that enlarged cattle pen capacity at the Sioux City stock yards must be provided to accommodate the growing trade at this point. Along with this

competition for the prizes and the auction ring in the first annual Stocker and Feeder show at the Sioux City stock yards next October.

Write to any of the commission firms of Sioux City whose advertisements appear in this paper for information regarding the Stocker and Feeder show. They will be glad to furnish you with details of the show.

WAIT ONLY A LITTLE WHILE

If you want to see the races and other sports, you'll have to wait only a little while. July 4th will soon be here. The thing to do now is to attend the annual convention of the Nebraska Stock Growers' Association—which this year will be a real stockmen's convention—and get the benefit of the splendid program that has been prepared. You will be well entertained while in Alliance, besides finding this convention to be the most profitable of any you have ever attended.

Dwight Zediker, Alliance's champion relay rider, will be at the Sioux City Roundup, July 3 to 6.

year amounting to nearly six millions of dollars, dealing with more than four thousand customers.

And it takes a lot of capital to handle such a volume of business as passes thru the Sioux City market. It is estimated that it takes right around \$10,000,000 for the five stock commission firms, stock yards company and packing houses to handle the business of the market, and this does not include the amount invested in the stock yards and equipment, Exchange Building, packing houses, etc.

One item that will be of particular interest to readers of The Nebraska Stockman is the increase in the range cattle business, and it is predicted by persons in a position to know the situation that the increase in this class of business will continue.

The following extract from the Sioux City Live Stock Record's re-

(Continued on page 32)