



STRENGTH



THE FIRST NATIONAL BANK

HAS THE FOLLOWING BANKING STRENGTH TO PROTECT ITS CUSTOMERS FROM LOSS

CAPITAL	\$50,000.00
SURPLUS AND PROFITS	65,000.00
STOCKHOLDERS' LIABILITY	50,000.00
REAL ESTATE	15,000.00
SECURED LOANS AND CASH	500,000.00
DEPOSITORS' TOTAL PROTECTION	\$680,000.00

Over a quarter century of banking in this community under the same management means something to you. It assures you of safety, thorough knowledge of and ready response to legitimate local needs.

For over twenty-five years through panics and prosperity, the old reliable

FIRST NATIONAL BANK

Has Grown Steadily Larger, Stronger and Wiser

Total Resources Over Six Hundred Eighty Thousand Dollars

CHAS. E. FORD, Pres.
R. M. HAMPTON, V. P.

S. K. WARRICK, V. P.

FRANK J. WAS, Cashier
EUGENE E. FORD, Asst. Cashier

The head of one of the greatest steel mills in America walked into a Studebaker store last week and said: "Send me out a Studebaker SIX. Studebakers are the hardest people in the automobile business to satisfy on steels. Judging by their chemical, metallurgical, and physical tests, this must be the best "SIX" in the world."



Economical Light-Weight
SIX
\$1575

One of the reasons why the Studebakers are the hardest people in the automobile business to satisfy on steels is this:

In no other way than by heat treatment of steels can the strength of a "SIX" be greatly INCREASED while the weight is being DECREASED.
In no other way than by the scientific distribution of this weight through intensive manufacturing can that BALANCE be secured which results in the superb ROAD-ABILITY of the Studebaker SIX.

And the important thing for you to remember is that the Studebaker SIX stands absolutely alone among light "Sixes" in the application of manufacturing methods without which LIGHT-WEIGHT, STRENGTH, BALANCE and ROADABILITY are impossible.

How Studebaker SIX Superiority Shows Itself

The Studebaker SIX will glide silently from a standing start on high into a forty mile gait, in a distance of less than 200 yards.

The Studebaker SIX when it is skimming along at a high rate of speed will actually seem to you — from the lack of effort and vibration—to be going at a rate ten miles per hour less.

The Studebaker SIX will stick to a straight line with scarcely a touch on the steering wheel, mile after

mile and hour after hour—while other "Sixes" are constantly creeping to one side or the other, and being coaxed back.

The Studebaker SIX will take steeper hills and more of them, on high, than any other "Six" it meets in a day's run.

The Studebaker SIX is not merely motor-silent, but silent all over—the transmission on the rear axle, in addition to its other advantages, contributing

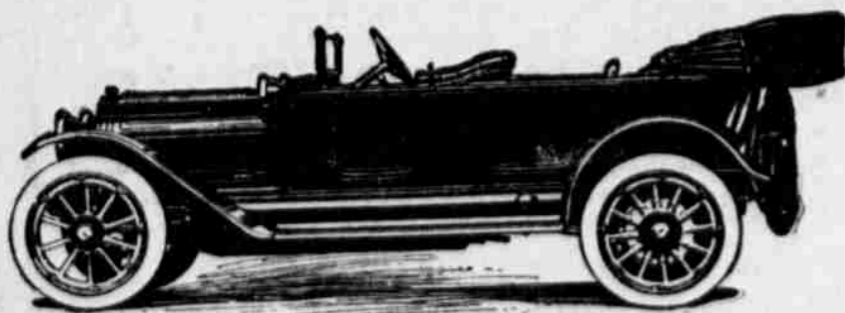
to that result.

The Studebaker Proof Book describes and pictures the scientific manufacturing operations of Studebaker. Send for it.

STUDEBAKER
Detroit

The difference between a brand new manufactured Studebaker SIX and a brand new assembled or semi-manufactured 'Six' is immediately apparent in the superior way in which the Studebaker holds the road. And grows more marked month after month. It culminates tragically, in a second-hand sale of the non-manufactured 'Six' at a terrific depreciation.

The Studebaker FOUR is characterized by the same manufacturing excellence and quality of material as the Studebaker SIX. The ideal car for those who desire a lighter, less expensive model.



LOWRY & HENRY

Agents for This Territory

"Quantity Production of Quality Cars"