

CLASSIFIED Advertising

Coal office at Rowan's feed store
ROWAN & WRIGHT, phone 71. **ut**

ABSTRACTERS

J. D. EMERICK
Bonded Abstractor.
I have the only set of abstract books in Box Butte county. Office Room 7, Opera House Block.
124570

MISCELLANEOUS

Money to loan on real estate. F. E. Reddish. **31t**

For nice clean Niggerhead Lump and Nut, and Eastern Hard nut coal, phone to No. 22.
Derks Lumber & Coal Company

L. W. BOWMAN

Physician and Surgeon
Office in First National Bank Bldg
Phones: Office, 362; residence, 16
59-11-1608 **Advertisement**

E. W. RAY, FLORIST

Cut flowers and potted plants
Floral pieces made on short notice
Mail orders given special attention.
44228549

FOR SALE—REAL ESTATE

Rowan & Wright, coal, wood and posts. Phone 71. **ut**

Buy your coal of Rowan & Wright. Phone 71. **ut**

Steam Plow for Sale

Bargain in Reeves steam plow outfit. Good shape. Address G. B. Carr, Alliance.
18-31-3236

Home grown seed oats for sale. Mixed, 50 cents per bushel. Pure Kherson, hand cleaned, 75 cents. Also some spring rye. J. A. KEEGAN.
18-31-3395

Have one yearling Shorthorn Bull left. Price, \$60 if taken soon.
J. A. KEEGAN.
18-31-3395

WANTED

150 head of horses or cattle wanted for summer pasture. Plenty of range and water. Thirteen miles northeast of Ellsworth, Nebr. Address C. W. MATTHEWS.
13113255

REAL ESTATE FOR SALE

- ONE 9 ROOM HOUSE, corner lot. 4 blocks west of postoffice.
- ONE 7 ROOM HOUSE, corner lot. In library block.
- ONE 7 ROOM HOUSE, corner lot. On Box Butte Ave.
- ONE CORNER RESIDENCE LOT. North of Academy.
- ONE CORNER RESIDENCE LOT. West of Emerson school.
- THREE INSIDE RESIDENCE LOTS. East of Emerson school.
- 800 ACRES fine dairy ranch. 1 m. to Letan, 4 1/2 m. to Alliance.
- 1820 ACRES fine farm and dairy ranch 1 mile to Letan, 6 1/2 miles to Alliance.
- 600 ACRES fine farm, 250 acres ready for crop. 1 mile to Letan, 6 miles to Alliance.
- 600 ACRES dairy farm. 1 1/2 miles to Letan, 7 to Alliance.
- 400 A. 2 1/2 m. south of Alliance.
- 640 ACRES, 3 m. south of Alliance.
- 160 A. 7 1/2 m. southeast of Alliance.
- 640 A. 3 m. east of Hemingford.
- 40, 80 and 120 ACRE irrigated farms in Platte River Valley. Only small payments required. Would consider some live stock. Call or write for description and terms.

W. W. NORTON, ALLIANCE, NEB.
FOR SALE—Small, clean stock of general merchandise. \$2,000 including fixtures. Postoffice thrown in. Postoffice pays \$20 to \$25 monthly. Cream station pays \$50 to \$65 for six months in the year, making \$75 to \$90 per month besides the profits from the store. Cheap rent. Daily mail after next July. 26 miles from railroad. Chance to buy or lease 840 acres in connection. This is a snap for some one. Act quick. Address M. L. Whitaker, Canton, Nebr.
13113286

HORSE ESTRAY

Estray since March 27—a strawberry roan gelding, six years old, weight 1100 pounds, branded L on left thigh and — on left neck. Last seen in the vicinity of Malinda postoffice. Was raised in Alliance and may have headed towards. Reward for information leading to recovery.
LEOPOLD PREUSS,
Mud Springs, Nebr.
186-11-4520

"LET ME CRY FOR YOU" HARRY P. COURSEY

LIVE STOCK AND GENERAL AUCTIONEER
Farm Sales a Specialty
TERMS REASONABLE
PHONE 644
ALLIANCE NEBRASKA

LOCAL ITEMS

From Thursday's Daily:
Miss Easter Kinsley of Hemingford was in Alliance yesterday.
Mrs Harry Suttin of Bingham was shopping in Alliance today.
Judge L. A. Berry returned last night from a trip in Wyoming.
S. A. Powles in a letter to J. W. Miller, deputy sheriff here, states that he and Hans Jensen are nicely located at Roy, Mont. They have selected two excellent homesteads and expect to file soon.
Earl Joder, the son of Mr. and Mrs. B. I. Joder, was operated on at the hospital Tuesday. At present he is convalescing nicely.
A. W. Tyler of Lakeside spent yesterday in Alliance on business. He returned to his home today.
S. E. Hollers, who had the misfortune to have his leg broken about three weeks ago has so far recovered as to be able to leave the hospital. He went to Lakeside today and expects to go from there to his home tomorrow.

Frank McGinness and Miss Ato Sutor, prominent young people of Lakeside, were united in marriage yesterday by Judge Waters in Alliance. They were accompanied by the bride's sister, Miss Irma Sutor and W. R. Crowther. The party returned to Lakeside today where the young people will make their home.
W. D. Potter of Bingham was in Alliance today having some dental work done. He returned on the noon train to his home.

From Friday's Daily:
Mrs J. W. Willis went to Marsland today to spend a few days.
Mrs Ray Marks went to Fort Morgan, Colo. to visit friends a few days.

John Jelinek, the county assessor, went to his home near Hemingford to remain over Sunday.
A daughter was born to Mr. and Mrs. Chas. Rodgers, 308 Big Horn ave. yesterday morning.

Miss Lulu Stout left yesterday for Twin Falls, Idaho, where she will visit her father for a month.

Mrs H. R. Beans left today for Shambaugh, Iowa where she was called on account of the serious illness of relatives.

Miss Jennie Martin and Miss Madge Phillips went to Chadron today where they plan to start a dress making school.

Mrs Clarice A. Shreves of Kearney, Neb. is expected to arrive today for a visit with her brother, A. H. Volker, clerk at the Drake hotel.

Miss Mabel Worley has returned to her studies in Lincoln after absence of a month, spent at her home here and in Thermopolis.

J. Schimek of Marsland was in Alliance today. Recently Mr Schimek suffered an injury to one of his eyes and it was necessary to remove it. He has not completely recovered from the operation.

W. G. Neimann of Beatrice, Neb. has been sent to this territory for the Dempster Mill Mfg. Co. to take the place of O. J. Emory who has been transferred to territory in Kansas.

Mr. and Mrs. G. E. Jordan of Waltham, Mass. are in Alliance on business.
E. M. Brass, of Grand Island is transacting business in Alliance. Walter Kimbell, who has been employed at the Drake hotel for several months left last night for Twin Falls, Idaho. He went by the way of Denver.

Everett Adams, who has been employed as night clerk at the Drake Hotel for about six months left today for Kansas City for a visit with his parents. He will be gone about a month. Sol Breen has taken his place at the hotel.

From Saturday's Daily:
F. M. Gilbaugh of Bingham was an Alliance visitor today.

M. L. Miller of Hemingford was transacting business today.

L. L. Fitzpatrick of Theford was in Alliance yesterday transacting business.

L. H. Welter, a prominent stockman of Sheridan, Wyo., was in Alliance today for several hours, while a shipment of sheep he was taking the eastern market were being fed.

From Monday's Daily:
F. Craft of Toledo, Ohio, is in Alliance today. He has been visiting a daughter at Morrill, Nebr., and may decide to engage in business in western Nebraska.

Rev. A. R. Haislop, district superintendent of Methodist churches, was called to Indianapolis last night on account of the serious illness of his mother. During his absence Rev. O. S. Baker will have charge of his work. Tuesday Rev. Baker will go to Baird to preside at the quarterly conference.

From Tuesday's Daily:
Alex Muirhead of Hemingford was in Alliance today on business.

Dr. J. M. Willis who has been practicing at Marsland for the past seven years, has opened offices in Alliance over Mallerys' store.

Mrs. Olds of Hemingford was shopping in Alliance today. A schedule went into effect Sunday whereby the Denver trains does not leave Alliance until 1 o'clock.

Mrs. D. H. Butler left this morning for Lincoln and Des Moines, Iowa for a month's visit with relatives.

Louie John Johnson of Alliance and Hans Wiess of Hemingford were granted their final citizenship papers yesterday by Judge Grimes.

O. K. Colerick of the Adams Express company left yesterday to take a messenger run between Deadwood and Edgemont for a month to relieve the regular messenger. R. H. Colerick has taken his place in the office here and Jesse Simpson has been assigned to the wagon.

W. G. Buehmer of Sheridan, Wyo., is in Alliance on account of the serious illness of his sister, Mrs. J. W. Burnett of Lincoln. Mrs. Burnett was taken suddenly ill at the home of Mrs. Jerry Rowan where she is visiting.

Strengthens Weak and Tired Women
"I was under a great strain nursing a relative thru three months' sickness," writes Mrs. J. C. Van De Sande, of Kirkland, Ill., and "Electric Bitters kept me from breaking down. I will never be without it." Do you feel tired and worn out? No appetite and food won't digest? It isn't the spring weather. You need Electric Bitters. Start a month's treatment today; nothing better for stomach, liver and kidneys. The great spring tonic. Relief or money back. 50c and \$1.00, at your Drug-gist.

A MISTAKEN IDEA

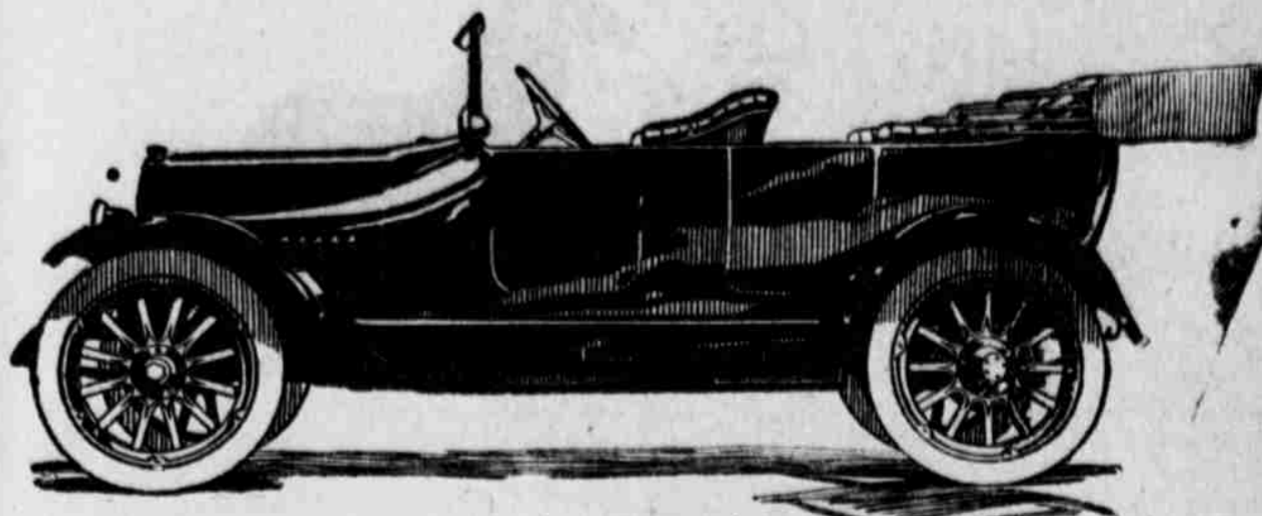
There are some people who still resort to drugged pills or alcoholic syrups to overcome colds, nervousness or general debility, and who know that the pure, unadulterated nourishment in Scott's Emulsion is eminently better, but refrain from taking it because they fear it may lead to excessive fat or obesity.

This is a mistaken idea, because Scott's Emulsion first strengthens the body before making flesh. Its blood-forming properties aid nature, so throw off sickness by building health from its very source, and flesh is formed only by its continued use. Avoid alcoholic substitutes for SCOTT'S

REWARD

Lost a check book with red leather cover, and buttoned with clasp. A pocket on the inside contains three notes payable to W. S. Moore & Sons. It was lost somewhere in the sand hills between Everett Eldred's and Lakeside. Liberal reward for return to First National Bank Alliance, the Harris Clothing Company, Lakeside or W. S. Moore, Gering, Neb.
-113572

Studebaker



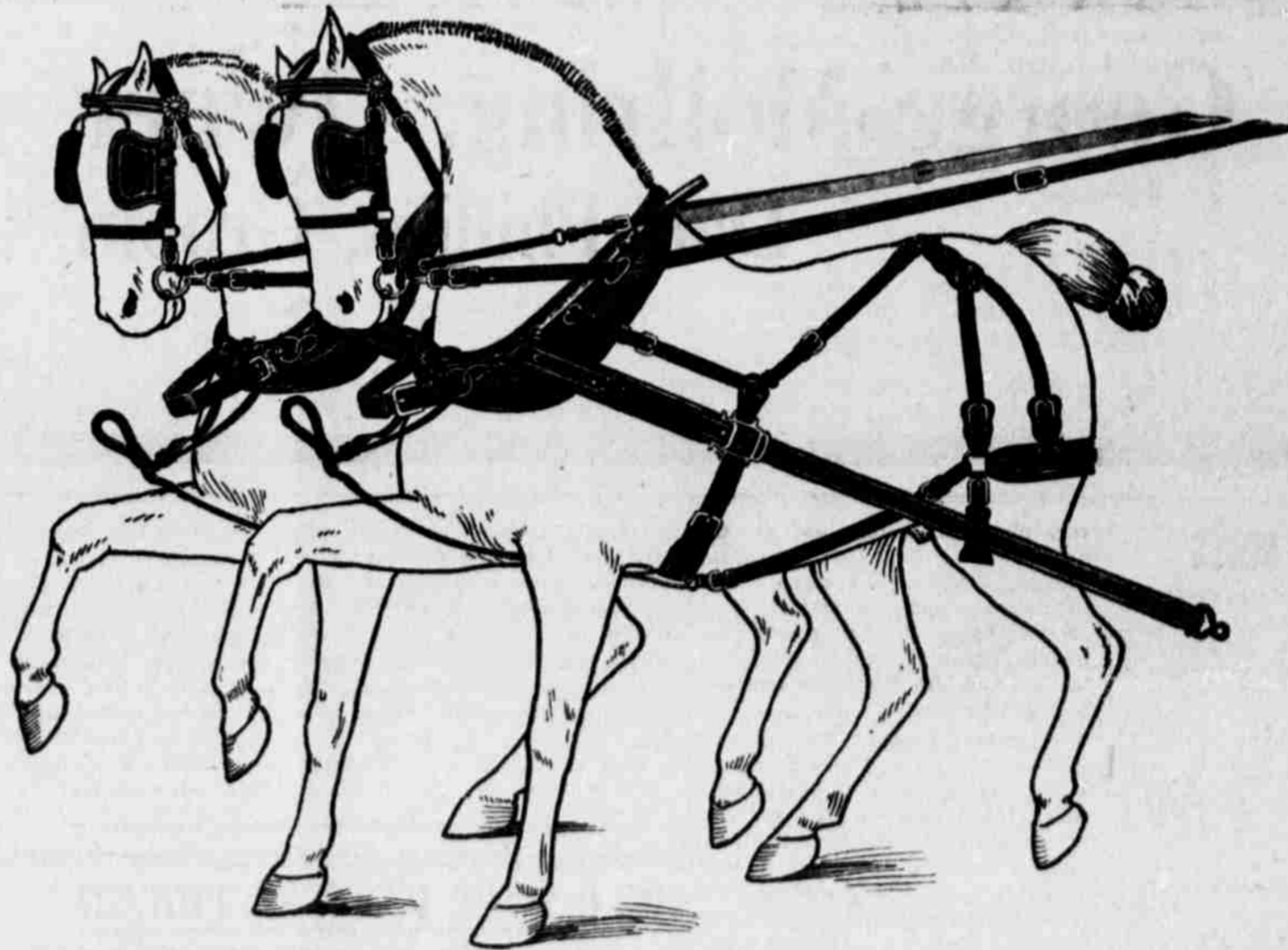
The Car for You

We are offering Studebaker Four and Six models—an automobile that will fill substantially every point to be desired in a car. The lines of both these models are classy incorporating the up-to-minute designs. The equipment includes only the standard makes.

In the construction of the car the safety principle has been given the utmost consideration. Special attention is called to the Studebaker rear axle, an adjunct to safety that is not surpassed in any car at any price. The Studebaker full floating axle is not to be compared with any of the "semi-floating" or "three-quarter floating" types. It is an axle which is scientifically heat treated alloy steel giving a margin of safety of more than 30,000 pound inches. It has the "Timken" bearings which add greatly to its efficiency. It is an axle that defies wear and shock. You may wonder at the special emphasis placed on the rear axle. But consider a moment the load it carries and you will realize why we feature this point. Call and let us explain in detail its value as well as the other features of the Studebaker that makes it the car for you.

The Studebaker Four, f. o. b. Alliance, \$1115
The Studebaker Six, f. o. b. Alliance, \$1650

Lowry & Henry Speedway Garage



Our Special \$37.50 Team Harness

- BRIDLES. Seven one-eighth inch short checks with ring, nose band sewed in, Concord blinds, round winker braces, 1 inch harness leather spotted fronts, short flat checks.
- BREAST STRAPS. 1 1/2 inch with snaps and slide Traces. 1 1/2 inch double and stitched triangular cocknyes.
- BREECHING FOLDED. 1 and one-fourth inch layer, 1 inch breeching tugs, 1 and one-eighth inch back straps, 1 inch double hip straps, 1 inch single side straps, 1 inch, new market straps. Belly bands folded, 1 and one-fourth inch. LINES—1 and one-eighth inch, 20 feet, buckles and billets with snaps.
- MARTINGALES. 1 1/2 inch with seven-eighth inch collar straps. HAMES—No. 5 Concord Bolt, with spread straps, and rings, hame tugs 1 1/2 inch, box loops, champion buckles, 1 and one-fourth inch belly band billets. Hitch Reins.

NEWBERRY'S HARDWARE COMPANY

A Want Ad In the Herald Will Sell It