

The First National Bank

ALLIANCE, NEBRASKA

CAPITAL AND SURPLUS - - \$100,000.00

Total resources over a half million dollars



R. M. HAMPTON,

VICE PRESIDENT

We are the largest bank in Northwestern Nebraska
It is to your advantage to have business relations with us

OFFICERS AND DIRECTORS

CHAS. E. FORD
S. K. WARRICK

EUGENE E. FORD

R. M. HAMPTON
F. J. WAS

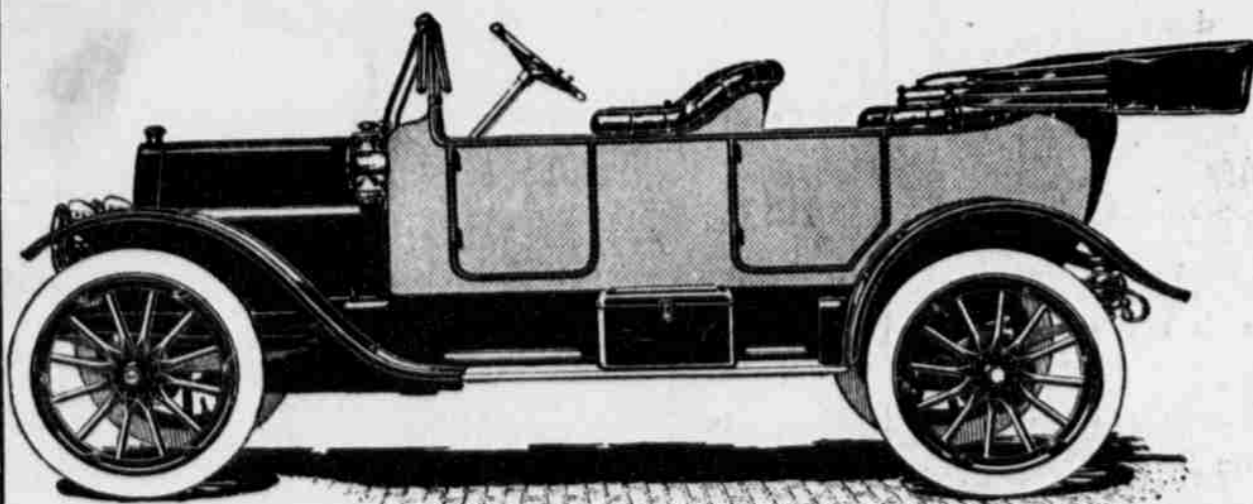
Are your valuable papers in a Safety Deposit Box in our fire-proof and burglar-proof vaults?

When Ready for an Auto

See the firm of Lowry & Henry, western Nebraska agents for the Ford and Studebaker lines. The largest and best equipped garage in western Nebraska. We give special attention to repair work, which is done by first-class competent repair men. We extend an invitation to stockmen to visit our salesrooms and have these cars demonstrated.



Salesroom and Garage, McCorkle Block

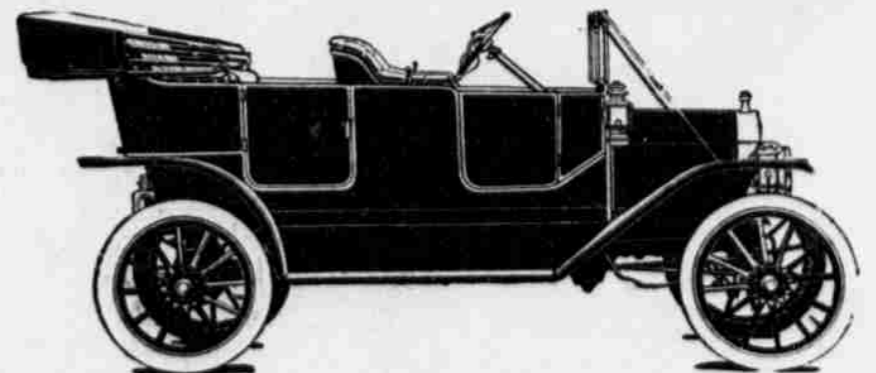


Studebaker "25" Price \$885, equipped

LIST OF FORD MODEL T CARS
F. O. B. ALLIANCE
Touring Car, 5-passenger\$670
Runabout, 2-passenger\$590
Town Car, 6-passenger\$700
Completely equipped, including electric lights

ONLY ONE MODEL

The FORD is a standardized car. The Ford Motor Company devotes all its time and facilities to the



FORD, MODEL T, PRICE \$670 COMPLETE

Complete List of Studebaker Cars

"SIX" Touring Car	\$1550
Roadster	\$1550
Limousine	\$2500
"25" Touring Car	\$1290
Sedan Type	\$2050
Coupe	\$1850
"30" Touring Car	\$1190
"25" Touring Car	\$885
"20" Roadster	\$835
Delivery Car	\$800

All prices for cars fully equipped f. o. b. Detroit

Lowry & Henry

Garage, McCorkle Block Phone 318
Alliance, Nebraska

building of one model—one car, the or Company, when he enters the MODEL T chassis. Several differ- market of supply; eight hundred ent bodies, of course, but the one thousand wheels, eight hundred thousand the one car, as, after all is and tires; one million lamps, all of said and done, the chassis is really the car. ninety thousand tons of steel, and spot cash in payment—no notes, no mortgages, no promises, no delay—spot cash. You cannot measure such a tremendous influence in its effect on price. Big buying and big production— centered upon the making of one model—has made FORD values maximumly high and FORD prices minimumly low.