

CATTLE RANCHES FOR SALE

WE ARE SELLING THIS LAND TO CLOSE UP AN ESTATE ON ACCOUNT OF THE DEATH OF MR. BARTLETT RICHARDS. THERE ARE ABOUT 10,000 ACRES. WILL BE SOLD IN ANY SIZE TRACT THAT THE PURCHASER MAY DESIRE, FROM 160 TO 3,000 ACRES. THE LANDS ARE ON RUNNING WATER AND SNAKE CREEKS IN CHERRY AND SHERIDAN COUNTIES, TRIBUTARY TO THE NORTHWESTERN RAILWAY AND THE TOWN OF GORDON. THEY LIE FROM TWELVE TO TWENTY-FIVE MILES FROM GORDON. CONNECTED BY TELEPHONE WITH GORDON, RUSHVILLE AND ELLSWORTH. BY LONG DISTANCE PHONE WITH ALLIANCE, OMAHA, DENVER, ETC. THREE POST OFFICES AND FIVE SCHOOL HOUSES ON THE RANCHES.

— HERE ARE SOME PARTIAL DESCRIPTIONS —

Big Lake Ranch

800 acres patented land and school section. 5 miles from postoffice and 2 miles from school. Good windmills and wells.

Home Valley Ranch

1280 acres patented land and 640 acres school land. Ample range. Great shelter in winter. 500 to 700 tons of hay can be put up. Frame house, cattle sheds, etc.

On Snake Creek

1600 acres good grazing land with three school-sections. A golden opportunity to secure good pasture land.

Overton Ranch

2,500 acres patented, and a school section. Two and one-half miles from post office. School on land. Ample hay. Snake river, never dry, runs mile and half through land. Two frame houses, blacksmith shop, stable, cattle sheds, windmills, tanks, etc.



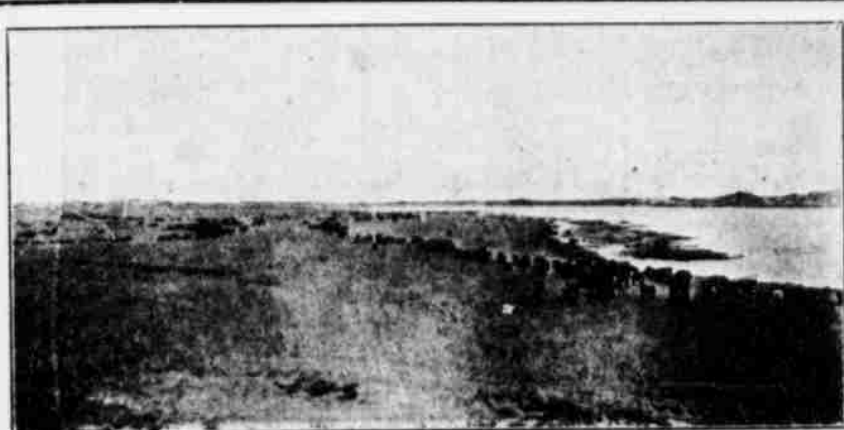
Haying Time on a Ranch

Willow Valley Ranch

1,280 acres patented. Puts up 700 to 800 tons hay. One of best hay valleys in sand hills. Good shelter, timber, splendid water, windmills and sheds. Ample pasture and range adjoining at normal rent. Phone connection. School and postoffice on land.

PRICES and TERMS

Prices depend upon the quality of the land and range, from \$6.00 per acre for grazing valley land to \$15.00 per acre for good hay land. Terms will be made to suit the purchaser, a reasonable payment down and a purchase money mortgage on the balance at a reasonable rate of interest.



SOME WESTERN CATTLE

It is well known that the most prosperous cattle men in the United States are in the sand hills of Nebraska. Cattle have doubled in value in the last two years. Land will soon follow.

Write for any other information you desire or come to see these ranches. They are selling fast. Now is the time to get a good ranch at a bargain price.



A Few Thoroughbreds

RICHARDS & COMSTOCK

ELLSWORTH, NEBRASKA

WILL COMSTOCK, President

MRS. BARTLETT RICHARDS, Vice President

CHAS. C. JAMESON, Sec'y-Treas.