

## Now you Alliance poets get busy Complete this Rhyme and WIN a PRIZE

The Elks' Committee in charge of their Show

### "The Whirl O' th' Town"

which is to be presented by about 60 local Singers, Dancers and Comedians

### Wednesday and Thursday Eve's, Feb. 8-9

At Phelan Opera House

offers FOUR Tickets to the person completing the following jingle in the best and most original manner:

#### COUPON

Fill out, cut out and address to Elks' Contest Committee, care of P. O. Box 1128.



JACK

Pa says I can see "THE WHIRL O' TH' TOWN"  
grins Jack in merry glee, but his twin brother, Tom.....

(You complete here)

Name, .....

Address, .....

For example: (but don't use this one)

But his twin brother Tom, only weeps in despair; he is bad; that's the reason, you see.



TOM

## Phelan Opera House Saturday, Feb. 4

### "The Candy Girl"

A Musical Comedy in 3 Acts

18 Big Song Hits  
20 People in the Cast  
10 Chorus Girls  
18 Changes Wardrobe

The only popular priced Musical Show now playing the West.

Prices: 50c, 75c and \$1. Seats on sale beginning Thursday.

## Spring Wagons for Sale

We now have five New Hand-Made Spring Wagons ready for delivery. They are better made, more durable and will give much better satisfaction than machine-made spring wagons. We will sell these wagons at reasonable price. If you want one of them, call immediately, before they are all taken. Shop opposite Palace Livery Barn.

## Donovan & Son

## Butte Art Studio

We do Enlarging and Commercial Work  
Kodak Finishing

## Repair Work

### Sewing Machines and Organs.

Have secured the services of a practical mechanic and can guarantee all work done by him. Don't trust your work to travelling repair men. This man will be here permanently. Repairs and parts furnished for all machines. Phone 139. Geo. D. Darling.

**AGENTS \$50 TO \$75 EVERY WEEK**

Biggest sales ever invented. Use man's orders \$200.00 one month—paid \$25.00. More boys in Pa. made \$500 in 2-3 hours. "Called at 20 houses, made 19 sales," says A. E. Martin, Mich. "Sold 111 in 2 days," says G. W. Handy, New York. "Sold 18 first 4 1/2 hrs.," says E. Meru, Wis. Hand-dred getting rich. You can make this money New Sell-Writing Mop. A household necessity. Women all buy—delighted. No talking necessary. 150 percent profit. Agents. Act quick. You can't fail because you risk nothing. We even pay agents and give exclusive territory. Write for your country today. Send no money. Only your name and address on a postal card for information, office and valuable booklet Free. Write today.

Turn Crank to Writing. Hands do not touch water or cloth.

The Easy Writing Mop (Patented)

U. S. Mop Co. 1299 Main St., Leipsic, O.

#### LEGAL NOTICE IN THE COUNTY COURT

State of Nebraska ) ss  
Box Butte County. ) ss

In the matter of the estate of William Wallace Gray, deceased.

TO THE CREDITORS OF SAID ESTATE:

You are hereby notified that I will sit at the county court room in Alliance, in said county, on the 23 day of February, 1911, and 23rd day of August, 1911, at 10 o'clock, in the forenoon of said days to receive and examine all claims against said estate, with a view to their adjustment and allowance. The time limit for the presentation of claims against said estate is six months from the 23 day of February, 1911, and the time limit for the payment of debts is one year from said 23 day of February, 1911.

WITNESS MY HAND, and the seal of said county court this 23rd day of January, 1911.

[Seal] L. A. BERRY,  
County Judge.

#### LAND OFFICE NOTES

Interesting News of the Government Land Office at Alliance.

**Homestead Applications**  
Adaline Watson, Bingham, Nebr., s<sup>1</sup>/<sub>2</sub> of se, se<sup>1</sup>/<sub>4</sub> of sw, section 21; ne, e<sup>1</sup>/<sub>2</sub> of nw, n<sup>1</sup>/<sub>2</sub> of se, ne<sup>1</sup>/<sub>4</sub> of sw, section 28-23-41.

Charles L. Hill, Alliance, e<sup>1</sup>/<sub>2</sub> of se, sw<sup>1</sup>/<sub>4</sub> of se, section 19; lots 3-4-5, se<sup>1</sup>/<sub>4</sub> of nw, w<sup>1</sup>/<sub>2</sub> of nw, nw<sup>1</sup>/<sub>4</sub> of sw, section 29; n<sup>1</sup>/<sub>2</sub> of se, ne, section 30-21-47.

Almon M. Abbott, Rushville, Nebr., lot 4, sw of nw, w<sup>1</sup>/<sub>2</sub> of sw, 1-33-44.

Daniel V. Lindeman, Crawford, Nebr., w<sup>1</sup>/<sub>2</sub> of sw, w<sup>1</sup>/<sub>2</sub> of nw, 18-30-52; s<sup>1</sup>/<sub>2</sub> of sw, s<sup>1</sup>/<sub>2</sub> of se, section 13; s<sup>1</sup>/<sub>2</sub> of se, e<sup>1</sup>/<sub>2</sub> of sw, section 14-30-53.

Joseph C. Roos, Antioch, Nebr., s<sup>1</sup>/<sub>2</sub> of sw, section 6; nw, nw of sw, section 7-25-43; s<sup>1</sup>/<sub>2</sub> of se, section 1; ne, n<sup>1</sup>/<sub>2</sub> of se, section 12-25-44.

Will H. Morgan, Alliance, 200 acres in 15-22-48.

Will B. Russell, Alliance, 618.77 acres in sections 3, 4, 9 and 10, 22-47.

Ethel Hagaman, Alliance, 640 acres in sections 19, 20, 29 and 29, 23-48.

Joseph C. Romer, Hemingford, ne and nw of 26-27-53.

Ver Swan, Harrisburg, nw of 29-19-56.

Clarence E. Morgan, Charlton, Ia., 642.54 acres in sections 17, 20 and 21, 22-47.

Albert Sutterfield, Chadron, all of 13-27-57.

Theodore A. Crapesey, Rushville, n<sup>1</sup>/<sub>2</sub> of nw, sw of nw, 6-30-43.

William H. Blanton, Chadron, nw of 27; n<sup>1</sup>/<sub>2</sub> and sw of 28-34-49.

Zadock Goodwin, Sr., Alliance, w<sup>1</sup>/<sub>2</sub> and se of 15-25-57.

Barney Meyer, Montrose, 480 acres in sections 14, 11 and 13, 33-54.

Theodore Thomas, South Omaha, all of 8-30-56.

F. L. Sharp, Moffitt, 653.17 acres in sections 30 and 19, 22-45.

Thomas Stewart, Kearney, s<sup>1</sup>/<sub>2</sub> of 13; nw of ne, ne of nw, section 24; se, n<sup>1</sup>/<sub>2</sub> of sw, 14.

William H. Wells, Clinton, 560 acres in 18-30-40 and 13 and 12 in 30-42.

J. P. Colerick, Alliance, land in 8-17.

Henry J. Howard, Gering, 240 acres in sections 14 and 23, 20-57.

Applications for Public Sale of Isolated Tracts.

Arnold Peters, Hay Springs, 200.42 acres in 19-29-44 and sections 12 and 13, 29-45.

Henry I. Davis, s<sup>1</sup>/<sub>2</sub> of sw, s<sup>1</sup>/<sub>2</sub> of se, 33-18-49.

George H. Hoxby, Broadwater, 400 acres in 18 and 19-20-48.

William Martin, Unit, se of ne, section 8; sw of nw, section 9-32-54.

Enrietta Hogue, Gordon, n<sup>1</sup>/<sub>2</sub> of sw, section 25; n<sup>1</sup>/<sub>2</sub> of se, s<sup>1</sup>/<sub>2</sub> of ne, sw, section 26; nw of nw, section 35; nw of ne, section 34; 30-41.

#### BOX BUTTE COUNTY REAL ESTATE TRANSFERS

By F. E. Reddish, Bonded Abstractor

J. H. Garrels to Lewis Garrels, NW<sup>1</sup>/<sub>4</sub> of SE<sup>1</sup>/<sub>4</sub>, 1-26-50, \$1,000.

J. H. Garrels to Etta Garrels B. King, NE<sup>1</sup>/<sub>4</sub> of SE<sup>1</sup>/<sub>4</sub>, 1-26-50, \$1,000.

The Truax Land Co. to A. A. Truax, Section 1-27-51, \$18,000.

John C. McCorkle to Russel W. Shields, SE<sup>1</sup>/<sub>4</sub> of 10-25-50, \$3,440.

S. B. Post to C. H. Freeman, NW<sup>1</sup>/<sub>4</sub> of 10-28-48 and NW<sup>1</sup>/<sub>4</sub> of 8-28-47, \$1.00.

Eugene Burton, referee, to Joseph E. Carey, SW<sup>1</sup>/<sub>4</sub> of 26-24-50, \$1,600.

Lincoln Land Co. to A. J. Welch, Lot 2, Blk. 5, Wyo. Add. to Alliance, \$225.00.

S B Post to C H Freeman, nw of section 10-28-48 and nw of 8-28-47, \$1.00.

Elmer A. Marsh to Joseph E. Carey, s<sup>1</sup>/<sub>2</sub> of nw and s<sup>1</sup>/<sub>2</sub> of ne, section 34-24-50, \$800.

Norbert Frohnapfel to Harry E. Jones, lot 11, blk 11, Hemingford, \$1,000.

Ernest L. Everett to James Harvey Garvey, lot 6, blk 25 and lots 17 and 18, blk 27, Hemingford, \$1,250.

The Truax Land Company to H D Butterfield, sw of 23-25-50, \$4,000.

Daniel Fitzpatrick to William F. Rosenkranz, lot 2, blk 1, Second add to Alliance, Nebr., \$3,000.

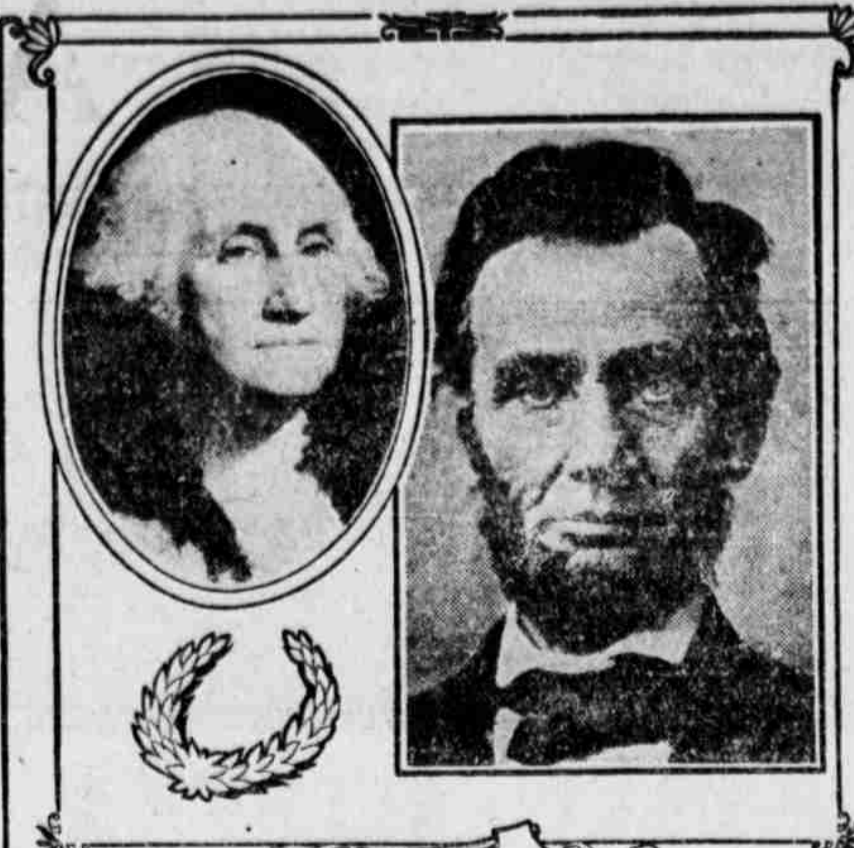
Daniel O'Keefe to Elizabeth O'Keefe, ne of 35-26-50, \$1.00.

D A Finch to J Lue Sutherland, 1/2 interest in ne of 5-27-49, \$1,000.

Miss Edith Snodgrass, of the Alliance city schools, was called home Monday noon by a telegram stating that her brother was seriously ill with an attack of appendicitis, and that it was feared he could not recover.

A classified advertisement will deliver your message to the people for whom it is intended.

ANYONE CAN RUN A PAPER, but it takes brains to get out a newspaper that will interest the readers. THE ALLIANCE HERALD covers western Nebraska.



1911 FEBRUARY 1911						
SUN.	MON.	TUE.	WED.	THU.	FRI.	SAT.
			1	2	3	4
5	6	7	8	9	10	11
12	13	14	15	16	17	18
19	20	21	22	23	24	25
26	27	28				

CALENDARS FOR YEAR 1912  
See Our Samples and Get Prices  
THE HERALD PUBLISHING COMPANY, (Inc.)  
ALLIANCE, NEBRASKA



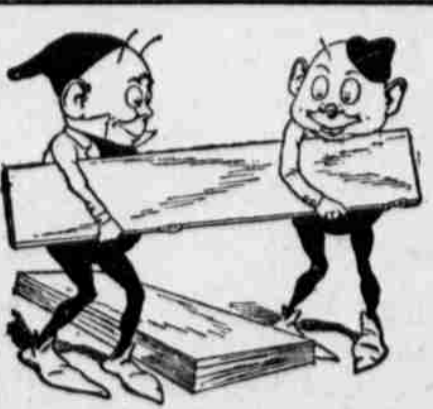
## From City to Country

Your Bell Telephone is one of five million other Bell instruments in daily use, connected by ten million miles of wire, uniting a nation of a hundred million people into harmonious whole.

More than a hundred thousand employes, working together, keep the entire Bell System attuned. Unity is the keynote. Without centralization and harmony of cooperation efficient service is impossible. One policy, broad and general, in which uniformity of method and co-operation are the underlying principles, makes Bell Service the World's Standard of Telephone Efficiency.



NEBRASKA TELEPHONE CO.  
T. H. BEESON, Local Manager



## Boards

of all descriptions for any part of a house or barn.

Dierks Lumber & Coal Co.  
Phone 22 D. Waters, Mgr.



## Wallace's Transfer Line

Household goods moved promptly and transfer work solicited. Phone 1 Frank Wallace, Prop'r.