

# Brennan's Drug Store

Patronized by  
careful and  
discriminating  
buyers

The one place in  
town where you  
can buy really  
good chocolates

## A Dutch Colonial.

Interior as Well as Exterior Reproduce the Past—House  
Can Be Finished Complete For \$4,500 to \$5,000.

Designed by Albert E. Davis, the Bronx, New York.



PERSPECTIVE VIEW—FROM A PHOTOGRAPH.

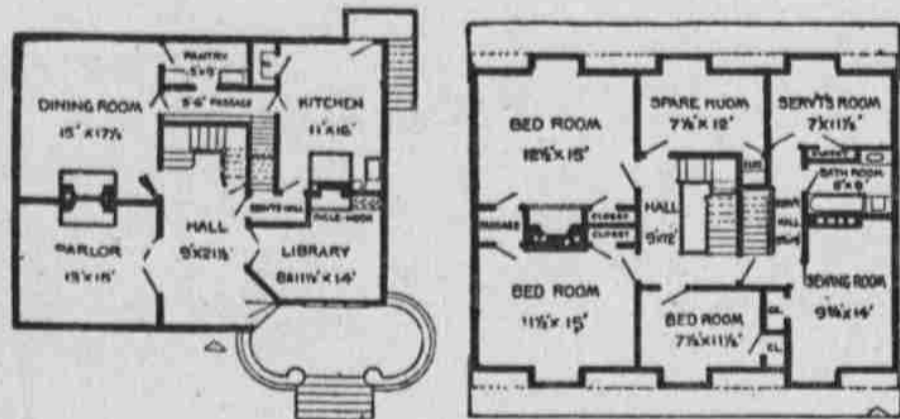
### Cement Walks

I make a specialty of cement walks and work. Have been constructing same in Alliance more than one year, and invite the most rigid inspection of my work. Use only the best of materials and make prices as low as can be done with honest work. Have had many years experience in cement construction in various cities. Remember poor cement work is dear at the cheapest price and when you have had to replace it is money thrown away.

### John Pederson

#### Seed Wheat and Rye

I have a quantity of winter wheat threshed and also some fall which I will sell to persons wanting the same for seed.—P. J. KNAPP, 8 miles northwest of Alliance, on place known as the "Donovan ranch."



FIRST FLOOR PLAN.

SECOND FLOOR PLAN.

A picturesque Dutch colonial cottage having a gambrel roof with broad projecting eaves, the entire exterior being shingled with cypress for the roof and sawed cedar for the sides, the starting courses having serrated edges. The rustic piazza walls are of rough field stones, coped with bluestone. The entrance is through a jib door into a large central hall, to the right of which is the library, with chimney corner or inglenook. The parlor, dining room and library have open red brick fireplaces with colonial mantels. There is a servants' hall and back stairs from kitchen to second story. The second story contains three bedrooms, sewing room, spare room, servants' room, bathroom and ample closets. Cellar floor is cemented. The interior trim is of whitewood, stained and varnished in different finishes, except the stairs, which are of cherry. Dimensions, 32 by 40 feet. Total cost, including plumbing and steam heating, \$4,500.

ALBERT E. DAVIS, Architect.



# GEO. A. MOLLRING

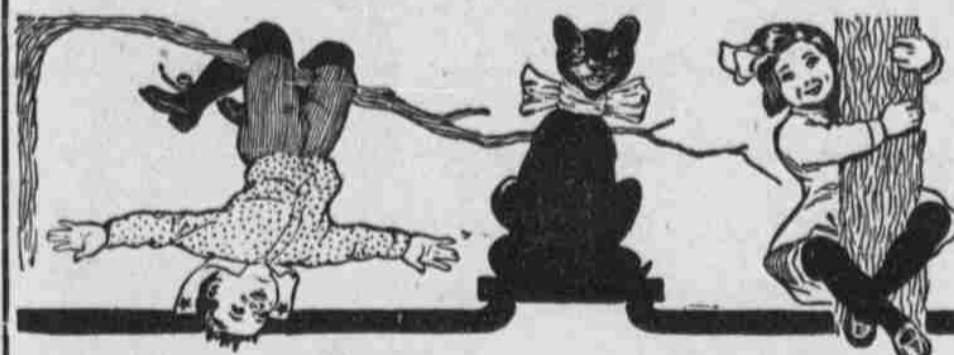


## 'LA VOGUE' SUITS and COATS

THE STYLE FAULTLESS

## New Line SKIRTS Just Received

## The Famous BLACK CAT Hose



FOR  
LADIES,  
GIRLS,  
BOYS

The Kind That Last

## RED SCHOOL HOUSE SHOES

For Boys and Girls

ASK TO SEE OUR NEW LINE OF

## Waists and Dress Goods

# GEO. A. MOLLRING

# LAND LAND



## ANDERSON & DONOVAN

The Land Men

Alliance - Nebraska

Office: 117½ Box Butte Ave.

5,000 acres Box Butte Co.

480 acres Dawes Co.

2,500 acres Lincoln Co.

1,800 acres Cherry Co.

600 acres Sheridan Co., 8 miles from Valentine

Also, land in western Minnesota, eastern Wyoming and eastern Nebraska --if you wish

4,000 acre Ranch, 15 to 18 miles west of Alliance, one-third hay land and two creeks running through. It's all fenced. 2 barns for more than 400 head of stock, and other out-buildings. A 7-room house, 3 wells and windmills. A 10-acre cultivated grove. This is a good bargain if you come soon. Old age the reason for selling.

# ANDERSON & DONOVAN

# Aladdin Houses

"Built in a Day"

Greatest Improvement ever made in the Construction  
of Frame Houses

Direct from the Forest to the Home

Skilled labor is unnecessary in the erection and completing of an Aladdin house, because the skilled labor is supplied at the mill, preparing the entire house for you to fit together in a few days. All the measuring, sawing and fitting is done by automatic machinery and the best skilled labor at the mill in the heart of the Michigan lumber region.

Let us give you further information and figures showing how much you can save in building a house by using the Aladdin method.

# ANDERSON & DONOVAN

DISTRICT MANAGERS

117½ Box Butte Ave.

Alliance - Nebraska