

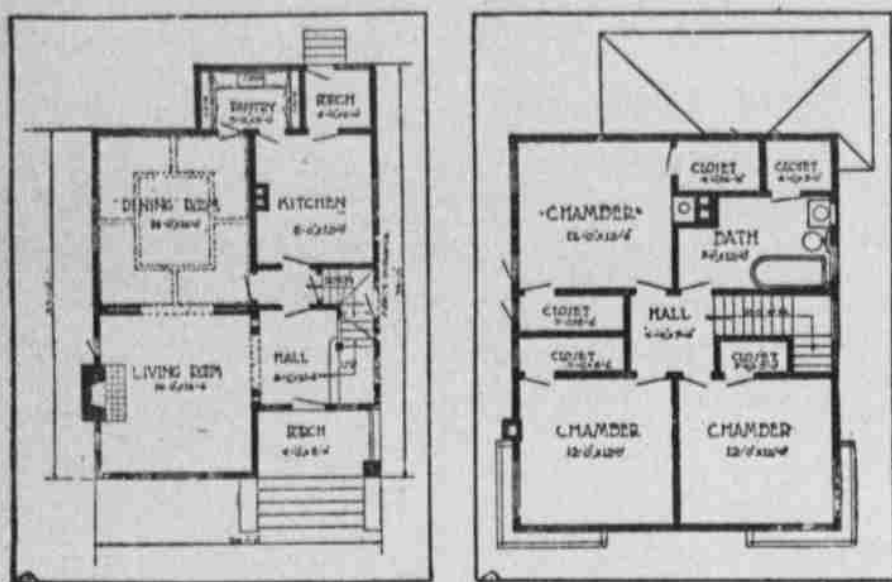
## Attractive Six Room House.

Carefully Planned Inside and Out — Architect's Estimate For Cost of Construction About \$5,200.

Copyright, 1909, by Thomas L. West, Seattle, Wash.



PERSPECTIVE VIEW—FROM A PHOTOGRAPH.



FIRST FLOOR PLAN.

SECOND FLOOR PLAN.

This design has been built from in different sections of Seattle and makes an attractive home. The exterior and interior arrangement is carefully planned, and for a house built on simple lines it has a charm all its own. A wide and easy stairway leads from the main hall to the second story. The basement is reached by a passageway between the hall and kitchen under the main stairs. Access from the hall to the living room is through a columned arched opening; to the kitchen and dining room through doors opening from the middle passageway already mentioned. Living room and dining room are separated by sliding doors. The living room has three windows in front and two high windows on each side of the mantel. A beamed ceiling forms a novel feature of the dining room. Second floor contains three large chambers, five closets and a large bathroom with a linen closet adjoining. Bathroom is finished white and kitchen natural, the remainder in stained fir. Size 26 by 32 feet. Full basement with concrete walls. Exterior sided and roof shingled. First story ceiling nine feet, second story eight feet six inches, basement seven feet. Hot water heating. Cost to erect as described about \$5,200.

THOMAS L. WEST, Architect.

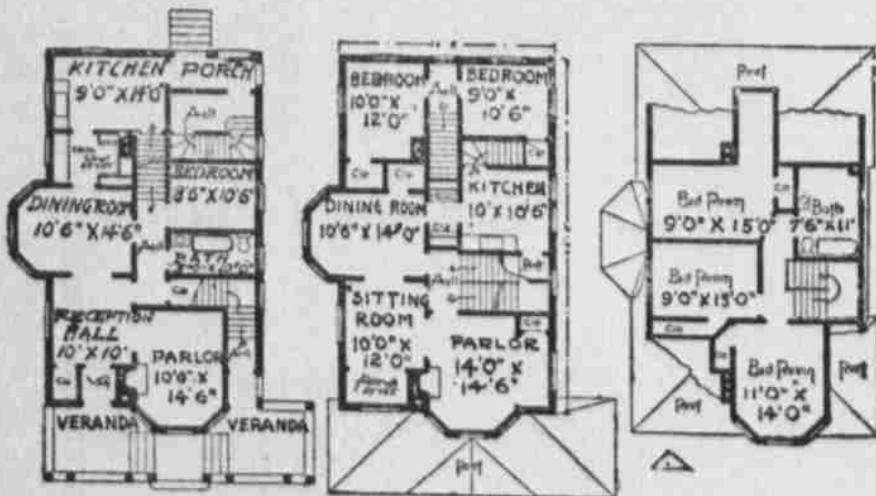
## Two Family Concrete.

Every Foot of Space Utilized — Can Be Constructed For About \$5,000.

Copyright, 1909, by the Thompson Architectural Company, Rochester, N. Y.



PERSPECTIVE VIEW—FROM A PHOTOGRAPH.



FIRST FLOOR PLAN. SECOND FLOOR PLAN. THIRD FLOOR PLAN.

For a two family house the design here shown has many advantages, among them economy of arrangement, which utilizes every foot of space under the roof. Each family has a separate front veranda and main entrance and separate entrance to the cellar, which is also exclusive. The bedrooms on the second floor belong with the first floor apartment. They are reached by a central stairway and hall which connect below with a third bedroom; also the bathroom, dining room and reception hall. The main part of the second floor and the entire third floor combined form an apartment similar in arrangement and convenience to many single family houses. Size about 35 by 45 feet, exclusive of veranda, but including bays. Built of cement blocks in natural gray the cost complete will be about \$5,000.

THE THOMPSON ARCHITECTURAL COMPANY.

## Agricultural Experimentation in Box Butte County

PROF. E. W. HUNT, DIRECTOR

### Disease in Potato Vines

There are several forms of disease in potato vines to which I wish to call the attention of potato growers. I mentioned one of them last week and recur to it again because of a possible misconception that has arisen in the minds of several who have observed it. I refer to the brown rot that appears at the bottom of the growing stem beneath the surface of the ground. When one notes a vine that looks sickly and pale and the leaves begin to roll slightly in the heat of the day, he will find upon digging away the earth that the disease has attacked the lower end of the stem giving a brown or black color on one side, and sometimes entirely surrounding it. Some people have thought that this disease was caused by a small borer that works up the heart of the stem. Whether this is true or not will have to be determined by laboratory investigation. In my opinion the two troubles are entirely separate and distinct though sometimes co-existent; that is, both appearing in the same plant at the same time. Prof. Bruner, state entomologist and also entomologist of the experiment station at Lincoln, has prepared a bulletin giving the life history and methods of dealing with this potato stem borer. I have sent for a number of copies of this bulletin and will have them for free distribution as soon as they come in. In this way any one interested may learn all that is known about it. In the meantime Dr. Wilcox is investigating in the laboratory the brown rot at the lower end of the stem and as soon as the nature of the disease has been determined will communicate his discoveries through these columns.

The only other diseases of the vine that have come under my notice are a few specimens of blight, or what appears to be blight. It is barely possible that there are forms of blight in this locality that are not known elsewhere. This will be for the specialists to determine. For blight, if it is abundant, the only feasible remedy is spraying with Bordeaux mixture. The blight may be effectually controlled by this method. A demonstration of the efficiency of the sprayer is now being made at the experimental plot north of town. No means of combating the brown stem rot can be determined until the precise nature of the disease has been ascertained. I suggest that where only a few plants in the field are effected with either brown or stem rot or blight, that the plants be dug up and burned. These diseases are caused by a fungus which is propagated by spores. If this fungus is allowed to mature it can spread the disease as well when pulled up as when in the ground. The only way to effectually kill it is to burn the plants.

### Potato Culture

The farmers in this vicinity have undertaken more work than they can properly do with a season such as this has been. Many potato fields are showing neglect, weeds are becoming abundant, and evidently on some fields an attempt is being made to grow a large crop of both potatoes and weeds on the same ground. Of course this is impossible. The weeds if left alone have native virility enough to distance potatoes in the race for life. The cultivators should get busy until the weeds are exterminated and the crop is practically made.

In my judgment the cultivator with four two-inch shovels on the side is the best tool to use. Many of the farmers are using cultivators with three shovels on the side and these, though not as good, answer the purpose fairly well. Under no circumstances would I use in this soil and under these conditions the old fashioned cultivator two five-inch shovels on the side.

It is well at the first cultivating to plow deep with the cultivator but after the first cultivating the implement should not be allowed to run deeper than three inches. The growing plant sends out roots in all directions from the growing stem. These roots are its feeders. By plowing deep after these roots are formed those that reach toward the center of the row are cut off and the plant is thereby deprived of a part of its food and consequently cannot thrive as well or produce as large a crop. All cultivation after the first should be shallow so as not to destroy any roots and frequent enough to destroy all weeds, keep the surface stirred so as to give the roots the proper supply of air and to prevent unnecessary evaporation. After cultivating it will repay any one to go over the field with a weeder at least once a week.

The field should be left as nearly level as possible. When the rows are ridged up a much larger evaporating surface is exposed and much of the moisture that should go to produce a crop is taken up by the air and lost.

### When to Cut Alfalfa

Perhaps there is no subject where there is such a difference of opinion as this. I have seen it recommended that the alfalfa be left until it is in full profuse bloom. Others advise cutting when the bloom is

half out, while still others say cut when it first begins to bloom. I wish here to call attention to a factor that must be taken into account in deciding this question. We have here in some fields a disease known as "leaf spot" in alfalfa. This is a fungus disease that effects the leaves, destroys them and weakens the plants. Its development is very rapid and a difference of only three or four days in cutting will make a great difference in the value of the crop. It is well known that the leaves are the best part of the alfalfa plant and furnish the most desirable part of the nutriment in alfalfa hay. Every loss of leaf is a loss of value in the crop. My advice is to cut the alfalfa as soon as this disease makes its appearance. In this way most of the leaves are saved from the disease for valuable animal food. In some fields that I have visited there has been great loss through "leaf spot" which might have been avoided if the crop had been cut earlier. In one field that I visited the leaves were so thick upon the ground as fairly to form a carpet and give one the impression of walking on moquet. If this field had been cut four days earlier and properly handled, that is handled before it became excessively dry, most of these leaves would have been saved for feed and a great loss thereby prevented. Alfalfa leaves have about the same protein feeding value that bran has and when fed right after the right kind of a harvest are worth as much ton for ton as bran. Bran in this market is almost out of sight and it behoves every grower of alfalfa to use every effort to save the most valuable part of his crop.

### For Sale at a Bargain

Owing to ill health, I wish to sell my business property at 113 Box Butte Ave., which now rents for fifty dollars per month. For particulars call immediately at the Alliance National Bank.

A. C. Johnson

### Horses Wanted

To pasture. Grass and water, good and plenty, one mile west of town.

A. R. Wilson.

### LEGAL NOTICE

In the District Court of Box Butte County, Nebraska.  
In Matter of the Guardianship / Order to Show Cause of Adelia Ramsdell, an Insane / Case person.  
The cause came on for hearing upon the petition of Frank H. Ramsdell, guardian of the person and estate of Adelia Ramsdell, an insane person, praying for a license to sell the South Half of the Southeast Quarter (S. 1/2 S. 1/4) and South Half of Southwest Quarter (S. 1/2 S. 1/4) of Section Five (5) in Township Twelve (12) N. Range Thirty (30) West, in Box Butte County, Nebraska, or a sufficient amount of the same to pay the sum of twelve hundred eighty dollars (\$1280.00) for the payment of expenses incurred in the support, treatment, care and maintenance of said ward, there not being any personal property and the income of said ward being insufficient to pay the said debts and expenses, and maintain the said ward.  
It is, therefore, ordered that the next of kin and all persons interested in said estate appear before me at Chambers at O'Neill, Nebraska, on the 20th day of July, 1909 at nine o'clock A. M. to show cause why a license should not be granted to said guardian to sell so much of the above described real estate of said ward as shall be necessary to pay said debts. I specify that this order be published in The Alliance Herald, a weekly newspaper, published at Alliance in said county, for three weeks prior to the date of said hearing.  
Dated June 25th, 1909. J. J. HARRINGTON, Judge District Court.

### CONTEST NOTICE

DEPARTMENT OF THE INTERIOR,  
UNITED STATES LAND OFFICE.  
Alliance, Nebraska, June 12, 1909.  
A sufficient contest affidavit having been filed in this office by Harry Der, contestant, against Homestead Entry No. 01613, made October 30th, 1898, for S. W. 1/4 section 18, 12 N. 30 W., 1/2 of section 18, township 12 N. of range 30 W. of the 6th P. Meridian, by Eliert Stindt, Contestee, in which it is alleged that the said Eliert Stindt does not reside on the said land and has no buildings or improvements thereon and that he has abandoned the same for more than six months prior to the date of this contest, said parties are hereby notified to appear, respond, and offer evidence touching said allegation at 10 o'clock a. m. on July 23, 1909, before the Register and Receiver at the United States Land Office at Alliance, Nebraska.  
The said contestant having, in a proper affidavit, filed June 7, 1909, set forth facts which show that after due diligence personal service of this notice cannot be made, it is hereby ordered and directed that such notice be given by due and proper publication.  
Dated June 17-5w W. W. Wood, Register.

### NOTICE TO CREDITORS

State of Nebraska, ss  
Box Butte County, ss  
I, L. A. Berry, County Judge of Box Butte County, Nebraska, hereby notify all persons having claims and demands against the estate of Adie E. Thompson that I have set and appointed the 27th day of December, 1909, at 10 o'clock in the forenoon, at the County Court room in Alliance, for the examination of all claims against the estate of said decedent with a view to their allowance and payment.  
All persons interested as creditors of the said estate will present their claims to me at said time, or show cause for not so doing, and in case any claims are not so presented by said time they shall be forever barred.  
This notice shall be sorted by publication thereof for three consecutive weeks in the Alliance Herald, a newspaper published in Alliance, prior to the day of hearing.  
Given under my hand and the seal of said court this 22nd day of June, 1909.  
L. A. BERRY, County Judge.

### ORDER FOR HEARING

State of Nebraska, Box Butte County, ss.  
At a County Court, held at the County Court Room in said county on the 3rd day of June, 1909.  
Present L. A. Berry, County Judge,  
In the Matter of the Estate of Nancy C. Watson, Deceased.  
On reading the petition of Francis M. Watson filed herein, praying that Administration of said estate be granted to Allen D. Rodgers as Administrator.  
Ordered, That said petition will be heard on the 26th day of July, 1909 at 10 o'clock a. m. That all persons interested in said estate may appear at County Court on said date, and show cause if any there be why said petition should not be granted; and that notice of the pendency of said petition and of said hearing be given to all persons interested in said estate by publishing a copy of this order in the Alliance Herald, a weekly newspaper published in said county for three successive weeks prior to the day of hearing.  
Dated July 1-5w L. A. BERRY, County Judge.

## CHAUTAUQUA, 1909

Scottsbluff, July 23 to August 1

The annual assembly of the North Platte Valley Chautauqua association will be held at Scottsbluff July 23 to August 1st, this year.

The management has been fortunate in the quality and quantity of talent secured and has endeavored to combine education, entertainment, religion, philosophy and recreation, that all who attend may be pleased and benefited. You will have brought to your neighborhood that which otherwise would cost you \$1,000.00 and years' time and travel and which is given here in 10 days. You would have to go to India, Japan, Arizona, Ohio, Montana, Boston, in fact all over the globe. The things which you have read and have interested you all over the world will more than interest you at home because you see and hear.

The following is a partial list of the entertainers:

Nat M. Brigham, who gives elegantly illuminated lectures, "The Grand Canyon of the Colorado," and "From Coronado to Kit Carson."

Charles Oliver Merica, president of the Wyoming university, in his favorite lecture, "The Boy Who Went Wrong," and a lay sermon.

Dr. George Hindley, the Montana whirlwind, in, "Tom, Dick and Harry," "Duties in Civic Matters," etc.

Edmond Vance Cook, a poet and humorist of the Riley class, in a host of good things.

Alton Packard, the king of cartoonists, in rapid fire chalk talk entertainments.

Dr. Toyokichia Iyenaga, a Japanese scholar, who talks on the East and the West and gives us beautifully illustrated lectures on "Picturesque Japan."

Samuel Avery, Dean of the Nebraska State University, in subjects not yet announced.

Laurant, the Magician, who presents many of the most complete entertainment associations which brings culture and charm. His novelties including "Ben Hur," "The Chariot Race," "Lenh, the Forsaken," also, "Laureame, the Marble Dream," which is a marble figure in a powerful calcium light, that comes to life at the stroke of the midnight bell, and tells the dramatic story of her life.

Col. Will Maupin in interesting topics including "Wit and Humor of the Bible".

Frank La Fayette Loveland, who is one of our modern ministers who presents new ideas with force and eloquence.

Gov. A. C. Shallenberger who is too well known as a Demosthenes and a Cicero to need introduction.

Boston Carnival and Concert Co., one of the most complete entertainment associations which brings culture and charm. Its novelties including "Ben Hur," "The Chariot Race," "Lenh, the Forsaken," also, "Laureame, the Marble Dream," which is a marble figure in a powerful calcium light, that comes to life at the stroke of the midnight bell, and tells the dramatic story of her life.

Miss Lackey, county superintendent, assisted by Miss Larson, a graduate of Colorado Agricultural college, and Prof. C. A. Fulmer, has arranged to hold the county teachers' institute upon the grounds each morning from 8 to 11. Girls' domestic science and boys' agriculture are important parts of the institute.

From Chautauqua Lake, New York, comes the word that 1909 is the classical year, so those who would like to participate in Round Table talks should look up points on the following subjects: "The Greek View of Life," "Plato, and His Lessons for Today," "Classic Myths in English Poetry," "Readings from Homer."

Tents, \$2.50 and \$5.00 for entire assembly.  
Season tickets: Adults, \$2.50; children, \$1.25; electric lights in tents, \$1 for entire assembly.

Dining hall on the ground.  
Write G. L. Shumway, secretary, at Scottsbluff, for concessions, tickets, tents or information.

## Acheson Bros.

Refrigerators  
Ice Cream Freezers  
Gasoline Stoves and Ranges

OPERA HOUSE BLOCK

## The Home Paper

Gives you the reading matter in which you have the greatest interest—the home news. Its every issue will prove a welcome visitor to every member of the family. It should head your list of newspaper and periodical subscriptions.

BRENNAN'S  
SANITARY  
FOUNTAIN  
It couldn't be better  
IT'S BEST

Conrad Koch

Jewelry

and Watch Repairing

Special attention given to  
RAILROAD WORK

BRENNAN'S  
DRUG STORE

## Combination Jack

Lifter,  
Post Puller,  
Splicer and  
Wire Stretcher,

most useful tool on a farm. Can be seen and tested at

604 Yellowstone Av.

Alliance, Neb., by

L. M. E. Anderson

## Ranchmen Stockmen Farmers

We cordially invite you to make our office your headquarters when in Alliance. Big rest room. The daily and weekly papers on file. Easy chairs and a good, clean place to rest.

Remember, when you have land for sale that we have a big organization and can sell it for you.

Buyers and Sellers  
We get them together

Phillips-  
Thomas  
Land Company

Ora E. Phillips Lloyd C. Thomas  
B. M. Thomas