

A LAND OF PLENTY

BOX BUTTE COUNTY

NEBRASKA

Soil

in Box Butte County is a rich, fertile, black, sandy loam, with great strength and of the finest quality. The land is level and slightly rolling. Drains well and holds the moisture.

Water

is found at a depth of from forty to seventy feet. Good sheet water without alkali.



BOX BUTTE COUNTY PRODUCTS

Climate

Our climate cannot be beaten. No severe blizzards in the winter and a fine, temperate climate in the summer. Warm summer days with cool nights. Just the right combination for a home and for growing crops and fine stock.

Schools

Our towns and county have plenty of schools. The people are hard-working and intelligent. A good place to live.

I will be glad to show you this fine land

I HAVE THOUSANDS OF ACRES OF THE FINEST FARMING LAND IN THE WEST FOR SALE AT THE LOWEST PRICES. LAND WILL MAKE YOU FROM 50 TO 150 PER CENT ON YOUR INVESTMENT. WRITE ME AT ONCE, TELLING ME WHAT YOU WANT AND WHEN YOU CAN COME TO SEE IT. I WILL BE GLAD TO SHOW IT TO YOU AND WANT THE OPPORTUNITY TO PROVE THE STATEMENTS MADE ON THIS SHEET



Box Butte County Farm Scene

Crops

I am not exaggerating when I say that our crops are getting to be as good as those raised on higher-priced land farther east. Potatoes, corn, and all kinds of small grain are raised in abundant crops. It is not unusual for the crops to pay for the land in one year. Where else can you do this. We have good transportation facilities and get the best prices all the time.



THE POTATO
Our Leading Crop

Potatoes

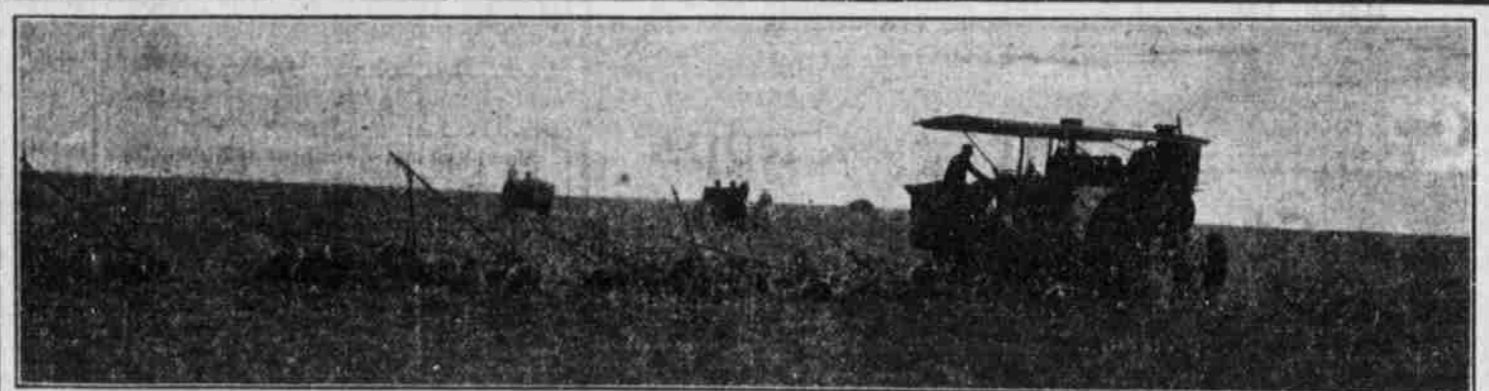
average from seventy-five to two hundred bushels per acre. All the farming is done by machinery and the hard work is diminished to almost nothing. Potato cutters, planters, diggers and sorters are all used. Our potatoes bring the best of prices and have a wide demand.

RAINFALL

The rainfall is getting larger and larger each year. This year beats them all. We will have a larger crop than ever before. Values are advancing fast. Crops are getting better and you will have to hurry.

Only a Small Investment Necessary

You do not have to wait until you have large capital to own a farm in Box Butte County. I will sell you a farm on easy terms. It will practically pay for itself in a couple of years. Your opportunity is here now. Take advantage of it. Come and see this land and prove my statements.



STEAM PLOW WITH DISCS

This shows you how we do our plowing. It is not unusual to see a farm of one, two or more sections, all being worked by monster steam plows. Raw land is being rapidly broken up and the country is being swiftly transformed.



33
Bushels
of
Wheat
to
the
Acre

Hemingford

is a thriving town of about 500 inhabitants. Has a fine flour mill; good public schools; lumber yard; newspaper, and new enterprises starting up all the time. Hemingford is located in the central part of Box Butte County, and is surrounded with the finest farming land in Western Nebraska. The main line of the C., B. & Q. railroad runs through it with four through trains each day.



Fine Stock

H. E. JONES

Real Estate Broker

Hemingford, Box Butte County, Nebraska