

IRRIGATED LAND

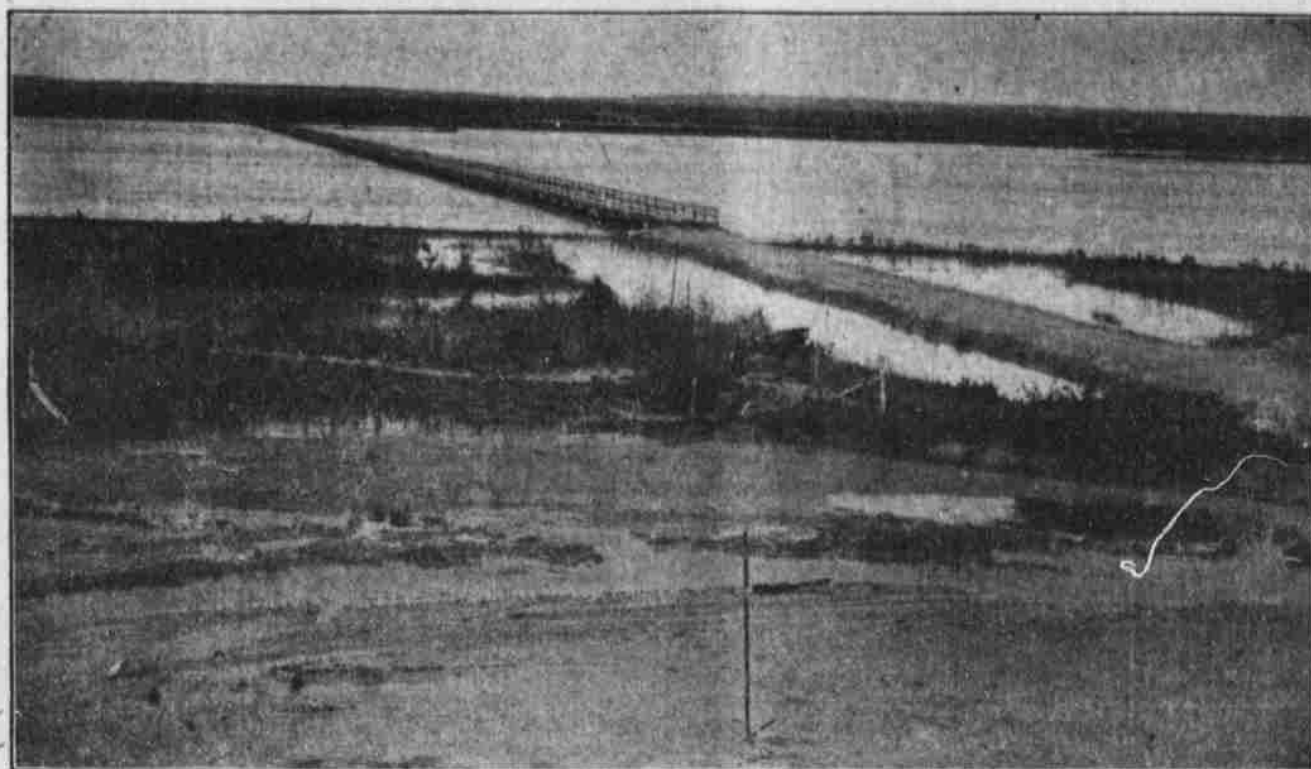
in the Famous North Platte Valley, Morrill County, Nebraska

Wheat

Nearly all varieties are grown. 54 bushels per acre have been raised. The average under irrigation is double the average for the state. Winter wheat bring the best price and the highest yield. **SPELTZ** gives a good yield and is especially fine for fattening sheep.

Oats are hardier than the wheat and seldom require more than one irrigation. As high as 125 bushels per acre have been grown, weighing 43 pounds per measure.

Barley here is always gathered without a stain. Therefore it brings the best prices.



Bridge over the North Platte at Bridgeport

Alfalfa

makes fortunes on irrigated land. Is cut three times each season, yields two tons per acre each cutting and when irrigated grows an inch per day. Sells for eight dollars per ton.

Sugar Beets

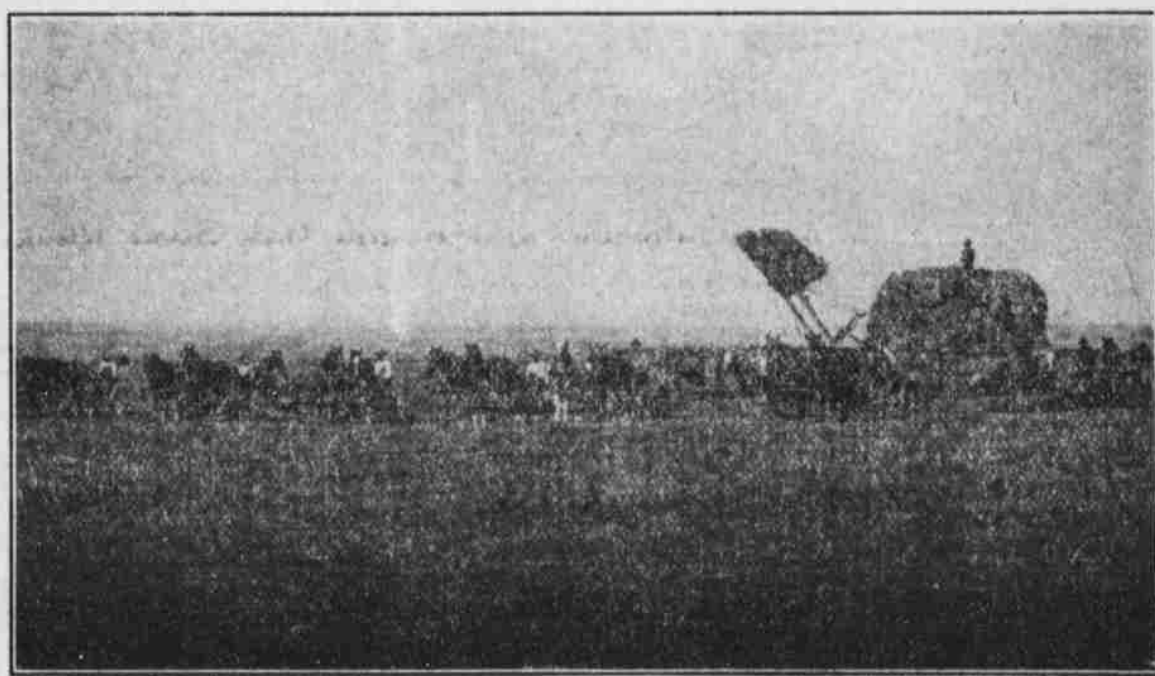
are one of the leading crops. Irrigation makes them yield big. The sugar factory pays the freight. We will probably have a factory soon.

Potatoes

go as high as 400 bushels to the acre. Big, well-formed, fine potatoes that rival the Greeley product and bring the highest prices.

I have thousands of acres of this fine land for sale

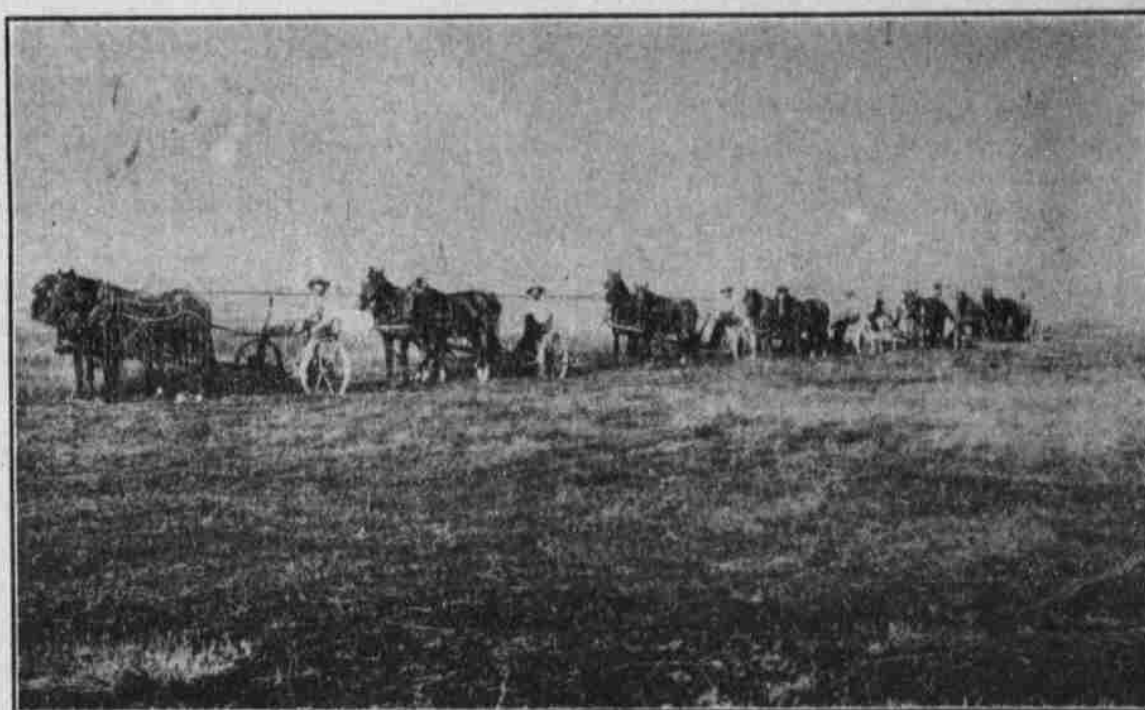
This land lies in a district about 125 miles in length and from 10 to 25 miles in width. A great deal is not yet under irrigation but the United States Government, "Uncle Sam," is pushing the work fast. You should see this land and buy NOW as prices are rapidly advancing. The soil is a rich, sandy, black loam, very quick to respond to cultivation. Hundreds of people are locating in this land of promise. No crop failures with irrigation and your money doubling with the increase in land values.



STACKING HAY ON A LARGE SCALE

Hay

North Platte Valley hay is always in demand at the highest prices. I have large tracts of hay land at cheap prices. Not much work to handle it and it pays big dividends on the investment. **COME AND SEE IT**



CUTTING HAY

Pathfinder Reservoir

This immense reservoir is a lake 25 miles long and 16 miles wide. The dam cost \$1,000,000 and the water will irrigate more than one million acres. Water sold by the government at actual cost.

Bridgeport

is the county seat of the new county of Morrill. Is in the center of this great district. An important point on the Burlington railroad. Will soon have the Union Pacific's new line. Transportation facilities the best in the world. A good place to live and a prosperous town.

Morrill County

has just recently been cut off from Cheyenne County. A great amount of the land I have for sale is in this county. Low taxes, good schools, prosperous people.



Alfalfa Fed Cattle



Morrill County Hogs



Hundreds of acres of grain

Write me or come at once

I HAVE OVER TEN THOUSAND ACRES OF UNIMPROVED AND UNIRRIGATED LANDS THAT WILL BE PLACED UNDER IRRIGATION BY THE GOVERNMENT IN THE NEXT TWO YEARS. PRICES ARE NOW \$20.00 TO \$40.00 PER ACRE. WILL SOON BE WORTH \$100.00 TO \$200.00 PER ACRE. WRITE ME OR COME AND SEE THEM.

Real Estate
Broker

E. H. FARMER

Reference: Any
Bank in Morrill
County

BRIDGEPORT, NEBRASKA