

DAKOTA COUNTY HERALD.

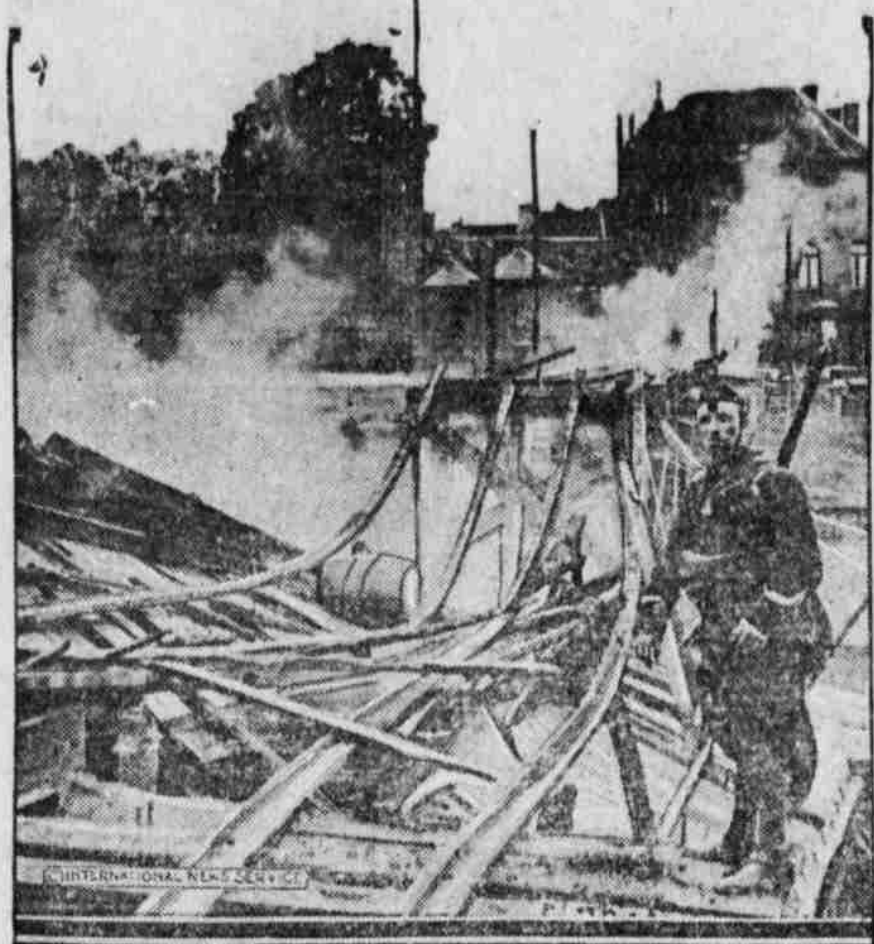
MOTTO: All The News When It Is News.

VOL. 23. State Historical Society

DAKOTA CITY, NEB., THURSDAY, OCTOBER 29, 1914.

NO. 9.

HAMPERING THE GERMAN OPERATIONS



This is the way the Belgians destroyed the railway which was the German line of communication between the army in France and Brussels.

GERMANS CLAIM STEADY ADVANCE

Enveloping Campaign of the Allies Stopped—Paris Admits Retirement.

ENEMY CROSSES THE YSER

Fresh Troops of the Kaiser Turn What Looked Like Defeat into a Victory—British Fleet Shells Ostend—Russians Claim Success on the East Prussian Frontier—General News of the War Gathered by Special Correspondents.

Berlin, Oct. 26.—The end of the twelfth week of the war was signalized, according to German official accounts, by the final stopping of the enveloping campaign which the allies for a month have directed against the German right wing.

The Germans have begun slowly but definitely to push southward, it is declared here.

Comment on French Bulletin. The following comment on the French official statement was given to the newspapers:

"The tone of the French official war bulletin of last evening was rather depressed and caused a panic in Paris. It admits a retreat between the sea and Canal La Bassee and mentions the impetuosity of the German attacks near Arras and Somme.

"The night bulletin aggravates the pessimistic impression. It repeats that there have been French defeats on the north wing. In order to attenuate the impression, an official note was issued two hours later, saying that the battle front had shifted 200 kilometers northward, and, therefore, patience always was needed."

Fresh Troops Change Situation. At the battlefront, via Paris, Oct. 26.—The Germans advancing toward the coast have broken the allies' line of defense in the battle of Flanders, and a large force of the invaders has effected a crossing of the Yser canal between Neuport and Dixmude, directly east of Dunkirk.

The force is believed to be part of the 400,000 troops rushed to the front by the Germans from the garrisoned positions at the rear of the fighting line. They are reported to have arrived just in time to turn the retreat which the French war office claimed Saturday into a victory. Both the French and German official statements tell of the advance of the Germans across the Yser and describe the battle which preceded it as a furious one.

British Fleet Shells Ostend. Bombardment of Ostend by the British vessels, which are no longer required to aid the left flank of the Belgian line resting on the coast, was begun in earnest. Their target was the German batteries about Ostend, but one of six shells which fell short of the range struck the Hotel Majestic, where the German staff was dining, according to a dispatch to the Amsterdam Telegraph. Several other buildings were damaged.

Recapture of Ostend by the allies is imminent, as the advance column of Belgians, relieved of the pressure against it by the change of the German front in the direction of Dixmude, is reported to have made remarkable progress. It is now ready to strike at the remaining German forces at Ostend in the rear while the British ships are bombarding from the sea.

British cruiser by a British aeroplane, which dropped a projectile near the point where the submarine's periscope had cut the surface of the water.

The attack is being centered upon Dixmude, well to the south of the coast line, to escape the long range guns of Admiral Hood's flotilla of British monitors and the squadron of British and French battleships operating on the coast and in the channels of the Yser canal.

Germans Cross Yser River. The Germans in a furious counter-attack directed against the positions of the Belgian troops along the Yser succeeded in crossing the river between Dixmude and Neuport, forcing the Belgians to retreat.

Offsetting this advantage gained by the enemy in the battle, which admittedly is of the greatest importance of any thus far in the war, the French troops in the Woivre region gained a signal success by securing control of one of the enemy's lines of communication toward St. Mihiel.

Battle Still on at Lille. About Lille the battle continued with undiminished fury.

An artillery duel of vast proportions and great significance is being fought to the northwest of Soissons and upon the heights in the region of Craonne. In the Argonne the allies' positions are being maintained with unquestioned success.

Three German batteries were destroyed during the fighting on the upper Meuse.

Fearful slaughter of the Germans in the Argonne region during last week was recorded in a letter from a French officer published here. The letter reads:

"One infantry regiment and a battalion of chasseurs was strongly entrenched with the mission of holding an important strategic highway. At midday four German columns, numbering 15,000 men, stormed the trenches with the bayonet.

"Their total losses were placed at a minimum of 10,000."

The Germans, in a mighty effort to gain victory, continue rushing up all the reinforcements that can be spared to the northern battle line.

The casualties in the Belgian army during its gallant fighting about Dixmude have been heavy, but the spirit of the troops is wonderful.

close upon successful operations at Verdun and the holding of St. Mihiel against tremendous odds, is believed here to presage the final breaking of the republic's line of defenses.

French gunners destroyed three German batteries in an artillery engagement of huge proportions north of the Aisne.

The ferocity of the encounters where the British and French have come in contact with the invaders around Arras (La Bassee and Armentieres), incident to the allied armies' advance upon Lille, is unparalleled in the history of war. The carnage has been frightful.

French Retreat Admitted. The next result of the day's fighting in this region has been gains at considerable cost for the allies at points to the east of Armentieres, while about La Bassee the French and British have been forced to retreat at some places in the face of the desperate assaults directed by the Germans. The gains by one side have been offset by those of the other and the effect on the situation has been insignificant.

Belgians on Offensive. The Germans, heavily supported by their mammoth howitzers, are still on the offensive against the Belgians, led by their king and supported by French troops, with British and French war vessels on the sea, and British monitors in the canals, lending the aid of their long range gun fire, while air scouts direct their range.

The battle has resolved itself into a duel of big guns. The allies, by reason of their long range guns, have had the advantage up to now.

Although pushed back at several points, the Kaiser's forces appear to be holding their line between the sea and La Bassee, the extent of the front in this distinct engagement.

German Point of View. Washington, Oct. 25.—The German embassy announced receipt of the following official wireless from Berlin:

"Official headquarters report of October 22 says fighting on the Yser canal is continuing, that eleven British war vessels are supporting the hostile artillery, and that the enemy was repulsed east of Dixmude. Our troops also have successfully advanced in the direction of Ypres.

"There is stubborn fighting west and northwest of Lille. The enemy slowly retreated along the whole front. The fierce attacks from the direction of Toul against the heights south of Thioncourt were repulsed under heaviest losses for the French."

Russ Announce Victory. Petrograd, Oct. 26.—Minister of War Soukhomlinoff in a statement sums up the situation in the following language:

Between the East Prussian frontier and the River Niemen the Russian army has been successful in driving back the Germans into Prussia, and in clearing the governments of Kovno, Suwalki, Lomsha and Pletsk of the enemy.

On the left bank of the Vistula, toward Warsaw and the fortress of Ivanogorod, commencing October 13 a series of battles with the Austro-German armies was fought which resulted on October 18 in complete victory for the Russians.

The enemy is retreating. Heavy losses were sustained by the Prussian reserve guard corps. Large numbers of prisoners and war material have been captured. German and Austrian armies advancing on Warsaw and Ivanogorod were repulsed and driven back to the line of Skiernewice-Radom.

GENERAL NEWS OF THE WAR

German Cruiser Sunk Continues to Capture and Sink British Ships—Lille Destroyed.

Sinks and Captures British Ships. London, Oct. 22.—A Lloyd dispatch from Cochlin says that the British steamer Exford has been captured by the German cruiser Emden off the Malabar coast.

Another Lloyd dispatch reports the sinking of the British steamer Chilkama, Troilles, Bonmohr and Clan Grant, as well as a dredger off the Colombo coast.

The German cruiser Emden has to her credit the sinking of 15 British steamers and the capture of three others vessels flying the union jack.

Belgian Ambulance Corps at the Front.

Belgium Yield Ground. Or the Battle Front, via The Hague, Oct. 25.—The allies' vigorous attack on the German lines before Lille has failed. The French and British are being driven steadily to the westward.

The principal gains of the Germans during the day were made in the vicinity of La Bassee. The Germans made a sortie and fell on the allies' lines, which retired in some confusion.

The Germans' gain at La Bassee was greater than at any other portion of the line, but the day saw large accessions to the territory occupied by the Teuton armies all along the battle front.

Two French Forts Taken. The German attack on Belfort, by which route it is hoped to hurl the Kaiser's armies again toward Paris, is proceeding. Two French forts to the south of the main fortress have capitulated to the Germans, the garrisons withdrawing to the greater stronghold. The development at Belfort continues

close upon successful operations at Verdun and the holding of St. Mihiel against tremendous odds, is believed here to presage the final breaking of the republic's line of defenses.

French gunners destroyed three German batteries in an artillery engagement of huge proportions north of the Aisne.

The ferocity of the encounters where the British and French have come in contact with the invaders around Arras (La Bassee and Armentieres), incident to the allied armies' advance upon Lille, is unparalleled in the history of war. The carnage has been frightful.

French Retreat Admitted. The next result of the day's fighting in this region has been gains at considerable cost for the allies at points to the east of Armentieres, while about La Bassee the French and British have been forced to retreat at some places in the face of the desperate assaults directed by the Germans. The gains by one side have been offset by those of the other and the effect on the situation has been insignificant.

Belgians on Offensive. The Germans, heavily supported by their mammoth howitzers, are still on the offensive against the Belgians, led by their king and supported by French troops, with British and French war vessels on the sea, and British monitors in the canals, lending the aid of their long range gun fire, while air scouts direct their range.

The battle has resolved itself into a duel of big guns. The allies, by reason of their long range guns, have had the advantage up to now.

Although pushed back at several points, the Kaiser's forces appear to be holding their line between the sea and La Bassee, the extent of the front in this distinct engagement.

German Point of View. Washington, Oct. 25.—The German embassy announced receipt of the following official wireless from Berlin:

"Official headquarters report of October 22 says fighting on the Yser canal is continuing, that eleven British war vessels are supporting the hostile artillery, and that the enemy was repulsed east of Dixmude. Our troops also have successfully advanced in the direction of Ypres.

"There is stubborn fighting west and northwest of Lille. The enemy slowly retreated along the whole front. The fierce attacks from the direction of Toul against the heights south of Thioncourt were repulsed under heaviest losses for the French."

RIGHT OF TRESPASS IN COURT

Supreme Tribunal to Decide Railway Accident Case Started in Dawes County.

An appeal has been made to the supreme court from Dawes county which involves the right of an individual to trespass on railway property. The case is one brought by George W. Means in the Dawes county district court against the Minneapolis & Omaha railroad for the injury to his son, James, about six miles from scenic in South Dakota. It appears that the son was badly hurt in rescuing another boy named Sherman who was lying on the track of the company at about 10:30 in the evening. Both were playing in the vicinity and the Sherman boy had laid down on the track. The Means boy saw the approaching train and in rescuing the other was hit by the locomotive and dangerously hurt. The father sued the company for \$2,000 damages, claiming that if the engineer of the train had been looking he could have seen the boy lying on the track in plenty of time to stop the train, or if he had whistled at the crossing the boy would have had time to get away from the track. The company set up a defense that the boys were trespassing and therefore the company was not liable, and the court jury decided against the plaintiff, who appeals.

The rehearing on an application for leave of the Lincoln Telephone company to increase rates at Ashland has been completed before the railway commission. Thirty residents of Ashland appeared and most of them testified. The telephone company desires to cancel grounded circuit rates which will have the effect of increasing one-party residence phones from \$1 to \$1.50, two-party residence rates from \$1 to \$1.25 and individual business telephones from \$2 to \$2.50. The company has 260 subscribers and obtained contracts on the basis of the new rates from 191 subscribers. Only twenty-nine subscribers have grounded circuit service. The company desires to change all telephones to a metallic circuit at an increased price.

Thirty-five subscribers have petitioned the board to permit them as a matter of right to retain the grounded circuit service, which they say satisfies them. Many years ago when the original telephone company was given a franchise it was agreed that not more than \$1 for a residence phone nor more than \$2 for a business phone would be charged by the company. Most of the objectors to higher rates are on two-party residence phones.

Dr. Wild, director of the state bacteriological laboratory, has completed an examination of four samples of water and two samples of milk from Tecumseh, where there is an epidemic of typhoid fever. The city water and milk from a dairy were suspected as being the cause of the epidemic. A sample of the water from each of the two city wells, water from a tap where typhoid fever exists, water from a well at the suspected dairy and two samples of milk from the dairy were examined. Dr. Wild reports that all four samples of water contain sewage and both samples of milk are reported by him to contain bacillus typhoid.

The state railway commission have completed the hearing on the Farmers' Co-operative association against the South Omaha stock yards company and took the evidence under advisement before preparing an order. It will probably be some weeks before the commission makes its findings in the complaint. There is quite a voluminous amount of evidence to be examined and the commission may conduct some further investigations on its own initiative.

Governor Morehead has designated Friday, November 6, as "State Fire Day," in which all schools of the state are expected to hold services along the line of educating the children along the line of fire prevention and methods to be used in putting out fires that may be started. This day will also be devoted to cleaning up rubbish and getting things in shape so that there is little chance of fire.

The railway commission has authorized the Arnold Telephone company to increase its rates for business telephones where the subscribers own the instrument from \$1 to \$1.25 and where the company furnishes instruments the increase is to be from \$1 a month to \$2.50 a month. The company will reduce the residence rate from \$1 a month to 75 cents a month, and the charge for extension bells will be lowered from 25 cents to 15 cents.

Doctor Wilson, inspector for the state board of health, has been called to Beaver City to investigate a disease believed to be smallpox.

The new state bar commission, to examine applicants for admission to the bar, and to act in disbarment proceedings, has been named by the supreme court. They consist of Bernard McNeny of Red Cloud, A. D. McCandless of Wymore, N. C. Pratt of Omaha, N. P. McDonald of Kearney and Walter Anderson of Lincoln.

Dakota City Grocery

Fresh Groceries of all kinds and at Prices that are Right

Just Arrived

a nice lot of Shoes, Gingham, Calicoes, Percales, Etc.

Come in and get First Choice We will save you money if you trade with us.

If you don't buy it here, how can we save it for you

Highest Market Price Paid for Butter and Eggs

W. L. ROSS

Dakota City, Nebraska

Modern Mid-West Methods Mean

Promptness—Accuracy—Courtesy—Appreciation, GOOD Banking since 1886—with "Safety—Over All" always first.

SO VERY SAFE—Your account would come—if you knew. Over 2000 pleased customers—think our Service—Safety best. Why not you—today—"Smile Also"?

Farmers especially welcome—their every want supplied. Call on us for "Anything—Anywhere." "Get Acquainted" with Your Bank.

The Mid-West Bank

Several of our fine farms are for rent to GOOD men. "Safe as a Government Bond." Sioux City, Iowa

Plan Now to Visit the California Expositions

SAN FRANCISCO: Panama-Pacific-International Exposition, February 20 to December 4, 1915.

SAN DIEGO: International Panama-California Exposition, Jan. 1 to Dec. 31, 1915.

When you visit the San Francisco and San Diego Expositions you will receive more benefit from your money than has been offered by any other world's fair of history.

The attractions are not alone with the great Fair at San Francisco and its magnificent array of world's achievement, or with California, its wonderful beauty and resources, but the routes of travel there and back are full of intensely interesting features.

The C. St. P. M. & O.

Chicago and North Western Line

The Most Direct Route to California

Round Trip Tickets will allow stopovers enroute and make it possible to plan a comprehensive tour of the west.

Details of Exposition Fares will be Announced Soon

B. C. Buchanan, Agent, Dakota City, Neb. G. H. MacRae, Gen. Pass. Agt., St. Paul, Minn.

A MAIN LINE THRO' CENTRAL WYOMING

On October 18th the Burlington will inaugurate through passenger train service between Denver and Billings over the new main line through the Big Horn Basin—through Cheyenne, Orlin Junction, Casper and Thermopola. The establishment of through train service over this new main line of railroad is historic. It closes one of the last great breaks in the transportation system of the country, and offers for the first time to the social, commercial and agricultural activities of Wyoming and of the Middle West, direct means for intercourse and exchange of commodities between northern and southern Wyoming—between the rich farming, live stock, coal and oil regions of the Big Horn Basin, in the North, and Cheyenne, the state capital, and Denver, the metropolis of the Rockies, on the south. The opening of this new line should prove a great stimulus to every farmer, stockraiser, and business man in central and Northern Wyoming.

NORTHBOUND, the train will leave Denver at 4:00 P. M. and arrive Billings, 6:20 the next afternoon; SOUTHBOUND, leaves Billings 7:30 A. M. and will arrive Denver, 12:35 the next noon. It will carry a comfortable car in each direction for the daylight trip between Billings and Casper, and standard sleepers for the night trip between Casper and Denver.

Let us send you booklets descriptive of this new country, or answer your specific inquiries about opportunities for the farmer and business man.

H. E. Gordon, Agent, Dakota City, Nebr.

L. W. WARELY, G. P. A., Omaha, Neb.

