

ALL WHO COME TO SEE THE EXHIBIT AND HEAR THE LECTURER ON THE

# War Trophies

Now in This Store on the Third Floor  
WERE LOUD IN THEIR PRAISE AND APPRECIATION

Historical Societies and all who are interested in Relics that may never be seen again are cordially invited to come and see the exhibit and hear Mr. Whitney describe the different items.

ALL THIS WEEK—10 to 12 and 2 to 4 Daily.

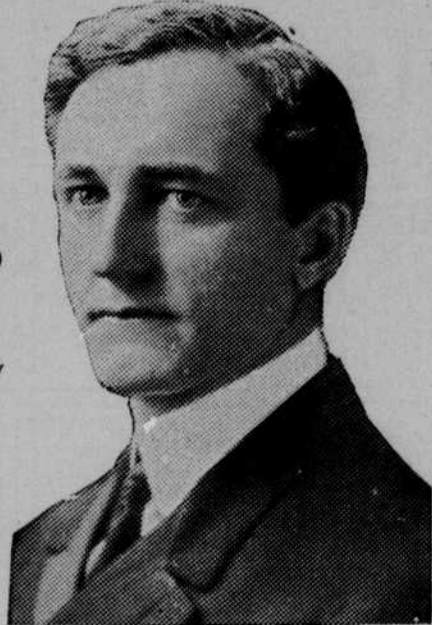
## Brandeis Stores

### Henry T. Clarke, Jr.

OF OMAHA

Chairman Nebraska State Railway Commission

**Republican Candidate  
for  
Re-Election**



The duties of a State Railway Commissioner are such as to require the selection of a man who is trained and experienced, a thorough student of rate and service problems, a man of mature judgement.

Henry T. Clarke, Jr., is the only candidate for the office possessing these qualifications.

Endorsed by Farmers, Jobbers, Manufacturers and Laborers Generally

VOTE FOR HENRY T. CLARKE, JR., FOR STATE RAILWAY COMMISSIONER

A TRIUMPH IN PURITY

# Storz



**TRIUMPH BEER**  
PROMPT DELIVERY TO PRIVATE FAMILY TRADE  
(PHONE WEB. 1260)  
MAIL ORDERS SHIPPED IMMEDIATELY

**CHAS. STORZ** CONSUMERS DISTRIBUTOR  
1827-29 SHERMAN AVE. OMAHA, NEB

**Now's the Time  
TO PLANT BULBS**

Tulip                      Hyacinth  
Narcissus                Crocus  
Lily

For Winter and Spring Bloom

**Stewart's Seed Store**  
119 North 16th Street  
(Opposite Post Office)

VOTE FOR

R. J.  
**MADDEN**  
FOR  
**POLICE JUDGE**

Common Sense and Justice

## New Fashions

From the Markets of  
Whole World



FOR MILADY'S WEAR  
And the Adornment  
of the Home.

### Thompson, Belden & Co.

Established 1886

OMAHA

Snappy Styles

—In—  
**SHOES**

FOR MEN AND BOYS At

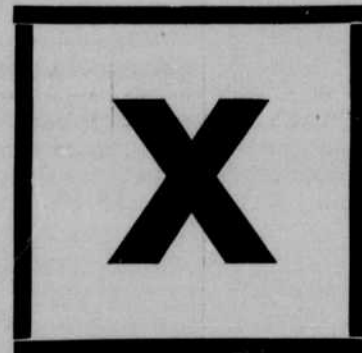
**M. S. ATKISSON'S**

("HOME OF THE NETTLETON")

Buy Yours Here.

503 South 16th Street

Her Grand Building.



# BENJ. S. BAKER

REPUBLICAN NOMINEE  
FOR

## CONGRESS

He's All Right and Big Enough for the Job.

VOTE FOR

### H. H. CLAIBORNE

ATTORNEY-AT-LAW  
Republican Candidate for

## Justice of the Peace

(Only One Candidate to be Elected)

### Judge Willis G. Sears

PRESENT DISTRICT JUDGE

CANDIDATE FOR RE-ELECTION.