

GRAIN AND PRODUCE MARKET

General Dullness, Though Market Opens Steady with Light Offerings.

CORN RULES STEADY AND STRONG

Liverpool Markets Close Unchanged to One-Eighth Higher, with Little or No Change at All on Corn.

OMAHA, April 4, 1908. The grain market was dull and inactive, with the general lack of interest shown on a Saturday.

The opening was steady and some advance was made on the dry weather reports and bullish Bradstreet shipping estimate.

Wheat opened steady with offerings high and the inclination of the crowd to the bull side, and values were raised slightly, only to fall back again owing to lack of support.

May wheat opened at 91 1/2c and closed at 91 1/2c. Corn ruled steady to strong and advanced 1/2c on strong buying early in the session.

Offering were light with receipts much smaller. May corn opened at 69 1/2c and closed 69 1/2c.

Oats ruled steady with cash demand good and no trading in futures. May option opened at 50 1/2c and closed 50 1/2c.

Primary wheat receipts were 355,000 bu. and shipments were 180,000 bu. against receipts last year of 645,000 bu. and shipments of 380,000 bu.

Corn receipts were 47,000 bu. and shipments were 37,000 bu. against receipts last year of 68,000 bu. and shipments of 69,000 bu.

Clearances were 56,000 of corn 1,000 of oats and wheat and flour equal to 177,000. Liverpool closed unchanged to 1/2c higher on wheat and unchanged on corn.

Local range of options: Wheat—May, 91 1/2c; July, 91 1/2c; Sept., 91 1/2c; Oats—May, 50 1/2c; July, 50 1/2c; Sept., 50 1/2c.

OMAHA CASH PRICES. WHEAT—No. 2 hard, 90 1/2c; No. 3 hard, 89 1/2c; No. 4 hard, 88 1/2c; No. 2 spring, 91 1/2c; No. 3 spring, 90 1/2c; No. 4 spring, 89 1/2c.

CORN—No. 2, 69 1/2c; No. 3, 68 1/2c; No. 4, 67 1/2c; No. 5, 66 1/2c; No. 6, 65 1/2c; No. 7, 64 1/2c; No. 8, 63 1/2c; No. 9, 62 1/2c; No. 10, 61 1/2c; No. 11, 60 1/2c; No. 12, 59 1/2c.

OATS—No. 2 mixed, 49 1/2c; No. 3 white, 48 1/2c; No. 4 white, 47 1/2c; No. 5 white, 46 1/2c; No. 6 white, 45 1/2c; No. 7 white, 44 1/2c; No. 8 white, 43 1/2c; No. 9 white, 42 1/2c; No. 10 white, 41 1/2c; No. 11 white, 40 1/2c; No. 12 white, 39 1/2c.

CHICAGO GRAIN AND PROVISIONS. Features of the Trading and Closing Prices on Board of Trade. CHICAGO, April 4.—An official forecast of rain for Missouri and Kansas caused weakness today in the grain market.

The wheat market was rather a tame affair and the pit was bearish all day. Although the rain forecast was for Missouri, Kansas and Nebraska failed to materialize, the official forecast for wet weather in that section of the wheat which was felt.

The market was bearish on crop reports from the southwest, but the majority of them were conflicting. Elevator interests and shorts were the principal buyers. A moderate advance had a strengthening influence on wheat late in the day.

The market closed easy. May opened at 91 1/2c, sold off to 91c and closed at 90 1/2c. Clearances of wheat and flour were equal to 138,000 bu. Primary receipts were 280,000 bu., compared with 63,000 bu. a year ago.

MINNEAPOLIS GRAIN MARKET. MILWAUKEE GRAIN MARKET. KANSAS CITY GRAIN AND PROVISIONS. KANSAS CITY, April 4.—WHEAT—Unchanged to 1/2c higher; No. 2 hard, 89 1/2c; No. 3 hard, 88 1/2c; No. 4 hard, 87 1/2c; No. 2 spring, 91 1/2c; No. 3 spring, 90 1/2c; No. 4 spring, 89 1/2c.

Receipts, Shipments. Wheat, bu., 44,000; Corn, bu., 17,000; Oats, bu., 2,000. Futures at Kansas City as reported by Logan & Bryan, 112 Board of Trade.

Table with columns: Articles, Open, High, Low, Close. Rows: Wheat, May, July, Sept; Corn, May, July, Sept; Oats, May, July, Sept.

NEW YORK GENERAL MARKET

NEW YORK, April 4.—FLOUR—Receipts, 49,000 bbls.; exports, 4,700 bbls.; market dull and lower.

WHEAT—Receipts, 11,000 bu.; exports, 55,000 bu. Spot, easy; No. 2 red, 91 1/2c; elevator, and 91 1/2c; f. o. b. afloat, No. 2 red, 91 1/2c.

CORN—Receipts, 12,700 bu.; exports, 2,617 bu. Spot, steady; No. 2, 69 1/2c; elevator, and 69 1/2c; f. o. b. afloat, No. 2 yellow, nominal.

OATS—Receipts, 7,500 bu.; exports, 1,000 bu. Spot, quiet; mixed oats, 35 to 37 lbs., 36c; natural white, 36 1/2c; clipped white, 37 to 40 lbs., 36 1/2c.

CHEESE—Steady; full cream, specials, 15c; state, full cream, small, white and fancy, 15 1/2c; colored, 15 1/2c; large, colored, fancy, 15 1/2c; good to prime, 14 1/2c; winter made, 14 1/2c; common to fair, 13 1/2c; skims, 12 1/2c.

EGGS—Steady; state, Pennsylvania and nearby firsts, 15 1/2c; western and southern firsts, 15 1/2c.

POULTRY—Alive steady; fowls, 14 1/2c; turkeys, 16c; dressed easy; turkeys, 13 1/2c; fowls, 13 1/2c.

WEATHER IN THE GRAIN BELT. Fair and Cooler Probably for Sunday is the Prediction. OMAHA, Neb., April 4, 1908.

A trough of low pressure extends from the Saskatchewan valley in western Canada, south over the extreme upper Missouri valley and Rocky mountain slope to New Mexico.

Omaha record of temperature and precipitation compared with the corresponding day of the past three years: Minimum temperature... 42 35 35 37; Precipitation... 0 0 0 12.

Corn and Wheat Region Bulletin. For the twenty-four hours ending at 8 a. m., 10th meridian time, Saturday, April 4, 1908.

Table with columns: Station, Max. Min. Fall. Sky. Rows: Ashland, Neb.; Auburn, Neb.; Columbia, Neb.; Fairbury, Neb.; Fairmont, Neb.; Gr. Island, Neb.; Hartington, Neb.; Hastings, Neb.; Oklahe, Neb.; Omaha, Neb.; Tekamah, Neb.; Alta, Ia.; Carroll, Ia.; Clarinda, Ia.; Sidney, Ia.; Sioux City, Ia.

ST. LOUIS GENERAL MARKET. ST. LOUIS, April 4.—WHEAT—Weak; track, No. 2 cash, 86 1/2c; No. 2 hard, 85 1/2c; May, 87 1/2c; July, 88 1/2c.

CORN—Lower; track, No. 2 cash, 62 1/2c; No. 2 white, 63 1/2c; May, 63 1/2c; July, 64 1/2c.

OATS—Lower; track, No. 2 cash, 50c; No. 2 white, 50 1/2c; May, 50 1/2c; July, 51 1/2c.

PEORIA MARKET. PEORIA, Ill., April 4.—CORN—Lower; No. 2 yellow, 63 1/2c; No. 3 yellow, 62 1/2c; No. 4 yellow, 61 1/2c; No. 5 yellow, 60 1/2c; No. 6 yellow, 59 1/2c; No. 7 yellow, 58 1/2c; No. 8 yellow, 57 1/2c; No. 9 yellow, 56 1/2c; No. 10 yellow, 55 1/2c; No. 11 yellow, 54 1/2c; No. 12 yellow, 53 1/2c.

SHOES DAMAGED BY WATER

2000 pairs of Men's and Women's high shoes that were slightly damaged by water will be placed on sale Monday morning.

\$2.00 Shoes at \$1.25, \$3.00 Shoes at \$2.00, \$4.00 Shoes at \$2.75, \$5.00 and \$6.00 Shoes at \$3.50.

These shoes are as good as new, only slightly damaged by water.

FRY SHOE CO. THE SHOERS 16th and Douglas St.

Articles, Open, High, Low, Close. Yes.

DRUMMOND'S SPRING SONG "Spoke Up"

Rim Your Wheels, Set Your Loose Tires, Tighten Your King Bolt, Button Your Back, Trim Your Shafts.

Your Akle's Spring, Your Reach Is Crooked, Your Body's Split, Your Top Is Tough, Paint's All Off.

Your friends think better of you. Look cheerful. Get a smile if you have to buy it. Come and see us about your buggy—your harness. We do all kinds of repairing and painting.

Don't forget the "WHITE STEAMER". The best car in America. We're the agents. We're well fitted for all kinds of automobile work.

Drummond's 18th and Harney. The weather is warmer throughout the corn and wheat belt.

WHAT WE DO. We clean or dye anything that requires care and skill in handling. Carpets and rugs, portiers, curtains, bric-a-brac, table and stand covers, laces, dollies and all kinds of wearing apparel.

The Pantorium. "Good Cleaners and Dyers." 1513 Jones St. Phone—Doug. 902. Ind.—4316.

Delath Grain Market. DULUTH, April 4.—WHEAT—No. 1 northern, 81 1/2c; No. 2 northern, 81 1/2c; May, 81 1/2c; July, 81 1/2c.

MILWAUKEE GRAIN MARKET. MILWAUKEE, April 4.—FLOUR—Steady. WHEAT—Steady; No. 1 northern, 81 1/2c; No. 2 northern, 81 1/2c; May, 81 1/2c; July, 81 1/2c.

MINNEAPOLIS GRAIN MARKET. MINNEAPOLIS, April 4.—WHEAT—May, 81 1/2c; July, 81 1/2c; Sept., 81 1/2c; No. 1 northern, 81 1/2c; No. 2 northern, 81 1/2c; No. 3 northern, 81 1/2c; No. 4 northern, 81 1/2c; No. 5 northern, 81 1/2c; No. 6 northern, 81 1/2c; No. 7 northern, 81 1/2c; No. 8 northern, 81 1/2c; No. 9 northern, 81 1/2c; No. 10 northern, 81 1/2c; No. 11 northern, 81 1/2c; No. 12 northern, 81 1/2c.

METAL MARKET. NEW YORK, April 4.—METALS—Copper was quiet in the absence of cables and quotations were more or less nominal.

D. C. SCOTT, D. V. S. (Successor to Dr. H. L. Ramacciotti), ASSISTANT STATE VETERINARIAN, Office and Hospital, 2610 Mason Street.

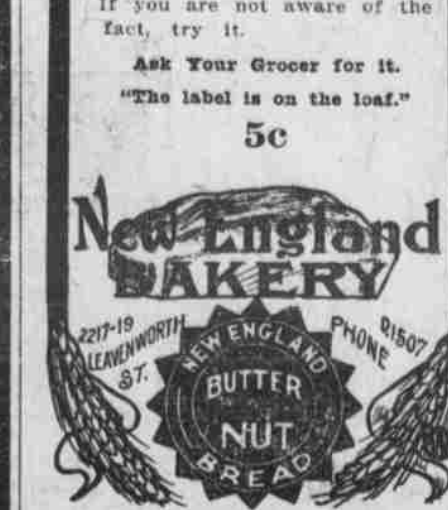
ONLY TWO WEEKS UNTIL EASTER



Time to think about the new spring suit isn't it? Certainly the best time to make your selection, while lines are complete. If you'll take the time to look over our spring lines we'll guarantee to show you the most swagger lot of new styles you'll find on display in Omaha.

The New Varsity Models. In the celebrated Hart, Schaffner & Marx hand tailored Suits will certainly meet with the approval of the most critical dressers.

YOU HAVE NEVER EATEN ANYTHING BETTER THAN "BUTTER NUT". It is the best bread made. If you are not aware of the fact, try it.



EASTER FOOTWEAR READY TO PUT ON. Permit us to call your special attention right now to our new arrivals in Women's Oxfords in the NEW COLONIAL EFFECTS.

Remember our 25 per cent Discount on bed room paper this week.

SAM NEWMAN. 109 South 14th Street, Phone, Douglas 45; Ind. A-4313.

ENAMEL FILLINGS Just Like the TOOTH. A durable substitute for gold or silver that does not show. If your teeth are missing we can fill the space without plates or bridge-work by our Alveolar System of dentistry. Most teeth made solid.

DR. BRADBURY, Dentist, 1508 Farnam. Phone Doug. 1728.

Easter Styles ALL NEW

WALK-OVER NETTLETON \$3-\$4-\$5, SPRING OXFORDS \$5-\$5.5-\$6. SWELLEST IN OMAHA. SELECT YOURS NOW.

WALK-OVER SHOE STORE. 314 South 14th Street, Four Doors South Beaton Drug Co. ED. S. THOMPSON, "Walk-Over Man".

SCHAEFER'S CUT PRICE DRUG STORE. OUR DELIVERY SYSTEM. "UP-TO-DATE" METHODS—Just call up any of our five stores, give us an order, and your drug wants will be delivered to your door as fast as motor cycles can carry them anywhere in Omaha, South Omaha and Council Bluffs, and at Out Prices too.

AND WE STILL ARE SELLING DRUGS AT CUT PRICES. A full line of SPARR'S DOG REMEDIES. Ask for Booklet on "Dog Culture."

SCHAEFER'S CUT PRICE DRUG STORES. OMAHA: 15th and Chicago—Bell Phone Doug. 747 & 748; Ind. B1747. S. W. Cor. 25th and N Sts.—Phone South 11. 15th and Douglas—Bell Phone Doug. 145; Ind. A4145. COUNCIL BLUFFS: 5th Ave. and Main St.—Phone 330.

Fire Sale Extraordinary. Our whole stock, Jewelry, Watches, Cut Glass, Etc., slightly injured from the recent fire, goes on sale Tuesday morning, 8 a. m., at a reduction of from fifty to sixty-five per cent. Your chance of a lifetime for bargains in our line.

AT THE SIGN OF THE CROWN. Brodegaard & Co. JEWELERS. 115 South 16th Street. Opposite Boston Store.

JEWELERS C.B. BROWN CO. 222 So. 16th OMAHA.

For Easter Gifts. We are showing a line of gifts never before shown in Omaha. GENUINE PERSIAN JEWELRY. Genuine Topaz, Turquoise matrix, Amethyst, La Valliers at—\$10.00 and \$15.00.

That the stones could not be bought in this country for that price. We have made unusual preparations for Easter this year in every department.

C. B. BROWN CO. 16th and Farnam.