

### Missionary Workers Tell of Philippines

Bishop Ernest Vincent Shayler Accompanies Mr. and Mrs. L. G. McAfee to This City.

This morning at the St. Luke's Episcopal church, Mr. and Mrs. L. G. McAfee, missionary workers of the church, told of the conditions and peoples of the Philippines.

Bishop Ernest Vincent Shayler, of Omaha, accompanied the missionaries and conducted a short service as well as introducing the speakers. The bishop called attention to the fact that these series of mission meetings are being started in St. Luke's church, the oldest church building in the diocese. He urged the support of the mission work of the church in the home and foreign fields.

Mr. McAfee and his wife have for the past ten years been in the Philippine field and were stationed at St. Leo's church, Upl. Philippines.

Mr. McAfee told very interestingly of the nature of the island, the various tribes of the natives through the several islands and the customs of the people that they had met with when reaching the islands to start their service.

Mrs. McAfee discussed the various tasks that the missionary found in dealing with the people, the necessity of being the physical healer as well as educational and spiritual guide. To the missionary came people for their treatments and teachings and when their confidence was gained the natives responded readily to the educational work and spiritual teaching.

The party were luncheon guests at the home of Misses Mia and Barbara Gering and this afternoon departed for Nebraska City where they will hold a meeting at St. Mary's church in that city.

Mr. and Mrs. McAfee will spend some time in the Omaha diocese and will visit the various churches.

#### BOARD OF EDUCATION MEETS

From Tuesday's Daily—  
The board of education last evening at their regular monthly meeting had with them a committee of the Chamber of Commerce composed of Searl S. Davis and John P. Sattler. The committee stated that the Chamber of Commerce had expressed the wish that the old high school building be used for community purposes. They asked that decision on the matter of tearing down the building be deferred until a canvass of organizations be made to see if sufficient support and sponsorship could be secured to create a project for the repair of the building.

The board of education will wait to see what the outcome of the canvass may be before taking further steps.

The board of education has prepared its budget and which has no provision for any such repair program and makes it impossible for them to carry on the restoration work of the building.

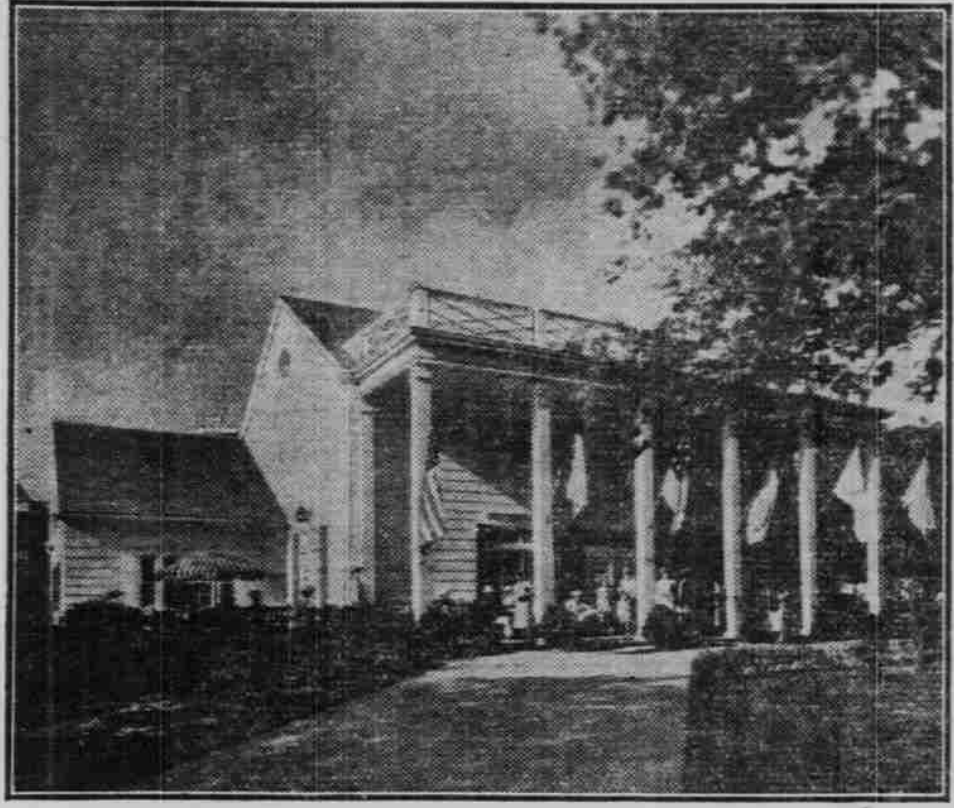
The board also decided on the Thanksgiving vacation which will be on Thursday and Friday, November 25 and 26.

#### BOWLING CONTEST

From Wednesday's Daily—  
The Wimpys took two games from the Bowman barber shop team in a contest last night. Pickens' big 191 saved the first game and Wimpys' 176 won the 2nd game by a small margin. Seitz' 517 series was the high three game score, also the 108 pin per game handicap wasn't enough to overcome so many low scores. Baker went in and bowled for Charles Ault in the last game on account of his sore hand.

Individual scores:  
Wimpy—Pickens, 478; Ault, 433; Hula, 345; Bourne, 469; Wimpy, 366.  
Bowman's Shop—Seitz, 517; Porter, 392; Dashner, 425; Nelson, 319; Bowman, 323; Handicap, 324.

### Conoco House to D. A. R.



HOSPITALITY HOUSE, the graceful colonial mansion in which Continental Oil Company kept "open house" during the Texas Centennial and Pan American Exposition has been presented by the Company to the Dallas Chapter of the Daughters of the American Revolution, which hereafter will use it as a meeting place. The presentation ceremonies included an address by Congressman Fritz Lanham from Fort Worth, Texas. Mrs. Cloyd H. Read, Regent of the Chapter accepted the gift, which will be known as Continental D.A.R. House. The former Hospitality House is air-conditioned and contains reception rooms, lounges and office space. More than 900,000 persons visited it during the exhibitions.

#### NINE WEEKS OF SCHOOL OVER

The first quarter of the 1937-38 school year will end this week with examinations being conducted in all grades. Report cards will be sent out during the next week and students and parents will have an opportunity to evaluate their work for this first quarter.

The Plattsmouth high school is using the hourly basis for conducting tests so it will not be necessary to dismiss school during this examination period.

#### VISIT NEW GRANDDAUGHTER

From Tuesday's Daily—  
Mr. and Mrs. William Wetenkamp, Sr., were in Omaha today to visit their new granddaughter at the hospital and were accompanied by William Wetenkamp, Jr., the happy father. Mrs. Glen Corneal, a daughter of Mr. and Mrs. Wetenkamp accompanied them.

#### ARE HAPPY PARENTS

Mr. and Mrs. William Wetenkamp are the proud parents of a seven pound baby girl born this morning at the Methodist hospital in Omaha. The baby has been named Marlene Elaine.

#### ELECTED CHURCH TREASURER

From Wednesday's Daily—  
Last evening J. Howard Davis, who has served several years as the superintendent of the Methodist Sunday school, was named as the church treasurer to succeed the late Jesse P. Perry, who held that office for a twenty year period.

Mr. Davis will take over the work of the office at once and which will make necessary his laying aside his Sunday school superintendency at the close of his term.

#### SUFFERS FROM STROKE

William Newman, 81, of St. Joseph, Missouri, who has been here visiting his daughter, Mrs. John Hatt and family, is suffering from the effects of a stroke.

Mr. Newman was taken ill Friday and has been under medical care since that time. Mrs. William Andrews, of St. Joseph, a daughter, is here to assist in his care.

Mr. Newman is a former resident of the vicinity of Nehawka, where he made his home some thirty years ago.

#### VISITS RURAL SCHOOLS

County Superintendent Miss Alpha C. Peterson, accompanied by Mrs. A. E. Johnson, registered nurse, are spending this week in visiting the rural schools of the county.

Miss Johnson is making an examination of the children in each school as to their health. She is also engaged as the examining nurse for the Plattsmouth city schools.

#### EIGHT MILE GROVE

##### LUTHERAN CHURCH

9:30 Sunday school.  
10:30 German service.

## Hunting for Used Cars at Value Prices!



Come in and look over these cars. Every one a 100% value car. Delivered ready for winter service!

#### PLYMOUTHs:

1937 - '36 - '34 - '30  
COUPE - COACH - SEDAN

#### CHEVROLETs:

1937 - '35 - '33 - '32  
COUPE - COACH - SEDAN

Ford V-8s: 1935 - 1934  
Coach - Sedan

## ROSEN AUTO COMPANY

O-K GARAGE BUILDING Where You Save the Finance

**SKINNY**  
spaces in your engine!

## No gangway for mere fast-flowing oils. Instant safety with WINTER OIL-PLATING

Long, skinny oil passages. Pinhole filter screens. Almost invisible spaces between the parts—even in worn engines. There's the what any oils are up against trying to flow all through your cold engine "instantly."

Even if some lay claim to flowing as fast as your correct Winter grade of Conoco Germ Processed oil, what of it? ... They absolutely cannot OIL-PLATE your engine.

And OIL-PLATING is actually ready to lubricate long before any known oils

faintly hope to circulate!

Before you even approach your cold car, OIL-PLATING is already up to the top of your engine, left there by Germ Process action.

This slippy PLATING of oil eases the job for starter and battery... wipes out ruinous Winter warm-ups for you. Your Conoco Mileage Merchant OIL-PLATES your engine with your correct Winter grade of Germ Processed oil and it goes weeks longer between quarts.

Write for "The Story of Oil-Plating" ... Dept. 4, Conoco, Ponca City, Okla.

## CONOCO GERM PROCESSED OIL

Your Mileage Merchant

"I am a local independent merchant. My living depends on you people right here. I want you coming to my place steady. I want to be able to look you in the eye. That's why I've got Conoco Products and Service for you. You'll get mileage that tells you I've got a right to be called Your Mileage Merchant."

Washing - Greasing  
Equipped to Service  
Hypoid Differentials  
Will Call for and Deliver Your Car

R. T. 'Bob' Rummel  
SERVICE STATION—6th and Vine  
PHONE 13

R. E. 'Dick' Beverage Agent  
Country Deliveries—Phone 13 or 439-J

501 THE NEW IMPROVED  
Tractor Fuel

Kerosene and Greases  
Germ Processed Motor Oil

#### TEACHERS RETURN TO DUTY

Miss Maxine Crodt, teaching in the McCook high school, was here over the week end to visit her parents, Mr. and Mrs. Frank A. Cloldt and was accompanied as far as Lincoln on her return by the parents. She has been attending the teachers meeting at Holdrege.

Miss Helen Farley, now teaching at York, was also here over the week end, with her parents, Mr. and Mrs. George L. Farley. She has been attending the teachers' meeting at Lincoln.

#### INJURED IN AUTO ACCIDENT

Misses Margaret and Alice Davis were slightly injured Sunday near Murdock while en route from their home in Lincoln, to Plattsmouth for the Methodist homecoming. Their car skidded in the loose gravel on the Greenwood-Murdock road and was swung into the path of a car driven by Richard Eppings of Murdock.

Both cars were badly damaged but the occupants suffered only minor cuts and bruises and all were able to return to their homes. Sheriff Homer Sylvester and Deputy Sheriff Cass Sylvester were called to the scene of the accident.

### FOR SALE!

## Hybrid Seed Corn

at Popular Prices... or on a 'Share Crop' Agreement!

Local Salesmen Wanted

Geo. A. Reed  
Box 76; Phone 43W Valley, Nebr.

## Armour's Star Pure LARD

[IN BULK]

Lb. . . . . 12c

Ham Roast Lb. . . . . 15c

Fresh, Choice, Tender.

Beef Roast Lb. . . . . 12c

Choice, Tender Shoulder Cuts.

Hamburger Lb. . . . . 12c

Selected Beef Cuts, Freshly Ground.

Beef Steak Lb. . . . . 15c

Tasty, Economical.

Ham Steak Lb. . . . . 23c

Fresh, Choice, Tender.

Bacon Sqs. Lb. . . . . 17½c

Sugar-Cured.

Minced Luncheon or Bologna Selected, lb. 14c

Oysters Fr. Direct Shipp't Solid Pack, Pint. 23c

of FISH, Fcy. Boneless, Skinless, 2 lbs. 23c

Filets Holland Mixed, 9-lb. keg. . . . . 69c

Holland Milkers, 9-lb. keg. . . . . 79c

New 1937 Pack.

SUNRISE COFFEE

Sweet, Mild. 3 lbs. 53c; lb. 18c

HINKY-DINKY COFFEE

3 lbs. 59c; lb. 20c

# HINKY DINKY

Ad for Plattsmouth, Fri., Sat., Nov. 5-6th

Grapes Fcy. California Red Flame Tokay, lb. 5c

Bananas Tropic Gold Fancy, Firm, Yellow-Ripe, Lb. 5c

Lettuce Large Size Head, 5c Extra Large Size head. 7c

Fresh, Solid Iceberg—I Idaho.

Grapefruit Marsh Seedless Large Size, 6 for 25c

Sweet, Juicy Texas

Oranges 17c Size, doz. 49c 21c Size, doz. 39c

Sweet, Fcy Florida Seedless Sealdsweat.

Cranberries Fcy Red Cape Cod 1-lb. Cello Bag. 15c

Cauliflower U. S. No. 1 Oregon White Snowball, lb. 9c

Apples Ring Packed, Full Bushel Basket, \$1.35; 6 lbs. 25c

U. S. No. 1 Large, Red Snappy Jonathans

Washington Delicious Apples Extra Fancy, Extra Large Size, Doz. 45c

Yams U. S. No. 1 Louisiana Porto Rican, 4 lbs. 19c

Cabbage Fresh, Crisp, Solid Colorado, Lb. 2c

Carrots Calif. Green Top Large Bunches, 2 for 9c

Del Monte PEARS or PEACHES 19c

No. 2½ Can

Del Monte Crushed PINEAPPLE 20c

Buffet Cans. 3 for

Del Monte Whole Unpeeled APRICOTS 17c

No. 2½ Cans

Staley's Dark or Light SYRUP

10-lb. Pail, 59c

5-lb. Pail 29c

PANCAKE FLOUR

Dixiana, 3-lb. Bag. 13c

Gehl's Quality MILK

3 Tall Cans 19c

Campbell's Tomato SOUP

Regular Cans, each 7c

Pine Cone Brand TOMATOES 7c

No. 2 Cans

QUAKER OATS

Quick or Regular Large Pkg. 17c

Bulk Hallowii DATES 19c

2-lb. Bag

Santa Clara PRUNES 25c

90-100 size, 4 lbs.

Choice Blue Rose Rice or LARGE NAVY BEANS

3-lb. Bag 15c 5-lb. Bag 25c

Sliced White, Rye, Whole Wheat or Raisin BREAD 7c

16-oz. Loaf

Sliced White, 24-oz. loaf. 9c

OXYDOL All Purpose Soap

Giant Pkg. 65c

Med. Pkg. 9c

Lge. Pkg. 21c

CRISCO or SPRY Shortening 51c

3-lb. Can

SNOWDRIFT Shortening, 3-lb. Can. 49c

Hinky-Dinky BUTTER 36c

1-lb. Carton

Sunlight Margarine 15c

So-Tast-ee Soda CRACKERS 17c

2-lb. Caddy

RITZ Butter Crackers 21c

Lux Flakes Small Pkg. 9c 22c

Large Pkg.

Lux Toilet Soap Regular Bars. 3 for 19c

Fine Granulated Beet SUGAR 52c

100 lbs., \$5.19; 10

10-lb. Cloth Bag, 54c

C & H Cane, 100 lbs., \$5.39; 10-lb. Cl. bag. 56c

Mile High Fancy Cut Wax or Green Beans 3 for 29c

No. 2 Cans

Royal Brand 48-lb. FLOUR Bag \$1.39

Glenn Valley CATSUP 9c

Large 14-oz. Bottle.

P & G SOAP 5 for 19c

Giant Bars

10 Reg. Bars. 33c

SUPER SUDS (Red Label) Excellent for Dishes, Fine for Laundering Small Pkg. 3 for 29 17c

Large Pkg.

Del Monte Tomato Juice, Giant 46-oz. can. 23c

Del Monte Pineapple Juice, Giant 46-oz. can. 33c

Del Monte Coffee, 2-lb. can, 53c; 1-lb. can. 27c

Del Monte Sliced or Crushed Pineapple, No. 2½ can. 22c

Del Monte Solid Pack Tomatoes, No. 300 cans, 3 for 29c

Good Brand Spinach, No. 2½ can 10c



## Viking Tissue

Soft, Absorbent Tissue

Regular Rolls 6 for 23c

12 Rolls, 45c

## Gold Medal Softasilk Cake Flour

Free Painting

"CHILD WITH CHERRIES" WITH EACH PKG.

44-oz. Pkg. 27c



## RED CROSS TOWELS

Convenient, Economical

Regular Rolls 5 for 45c 2 for 19c

### MEN'S LEATHER JACKETS

- Brown Suede
- Yoke Back
- Zipper Front

SPECIAL AT \$4.95

WESCOTT'S  
Where Quality Counts