

Commissioners Transact Regular Monthly Business

Gravel Levy in Mt. Pleasant Precinct Approved with County Paying Half of Cost.

Graveling of four miles of highway in Mt. Pleasant precinct, petitioned for by more than 51 per cent of the resident freeholders was approved by the County Commissioners at their July meeting, with the county following its practice in vogue since 1928 of paying one-half the cost. The other half will be raised through a one mill levy against property for the one year 1937 only.

The Commissioners established this policy of paying half back in 1928, when a resolution was passed making the definite proposal to all sections of the county to pay half the cost.

Reports of various county officers of fees collected during the second quarter were received, as follows: County Judge \$814.26, County Clerk 352.00, Register of Deeds 456.00, County Sheriff 148.50, Clerk of Dist. Court 674.65

A quit claim deed was signed by the board transferring Lots 3 and 4, Block 1, Fleming and Race Addition to the City of Weeping Water to Harold S. Meyers of Weeping Water.

The County Supt. of Schools filed a certificate stating that a free high school tuition levy for the sum of \$28,988.00 would be necessary for the year 1937-38 to pay the high school tuition of 358 qualified pupils. As the valuation on which the high school tuition levy is based was not available, the levy could not be made by the board and was deferred to be certified to the County Clerk later by the County Superintendent of Schools as provided by law.

Mothers' Pensions of Mrs. Elsie M. Smith, Mrs. May Bauers, Mrs. Marcia Hise, Mrs. Cleo Capper and Mrs. Ruth E. Taylor were revoked by the County Judge and approved by the Board as they are now transferred to the Dependent Children's list.

Claims Allowed Balance of the time was spent in considering and allowing claims on the various funds as follows:

MOTHERS' PENSION FUND table with names and amounts.

GENERAL FUND table with names and amounts.

Table of financial entries for Henry T. Woster, Minnie L. Puls, R. W. Tyson, etc.

Table of financial entries for C. L. Raul, J. H. Steffens, A. O. Ault, etc.

Table of financial entries for RD's 1 and 10, Bauer Auto Supply Co., Anchor Oil Corp., etc.

Table of financial entries for Searle & Chapin Lumber Co., material, Crane, Curvey & Murtey, etc.

Table of financial entries for COMMISSIONER'S FUND First District, Standard Oil Co., Wm. Read, etc.

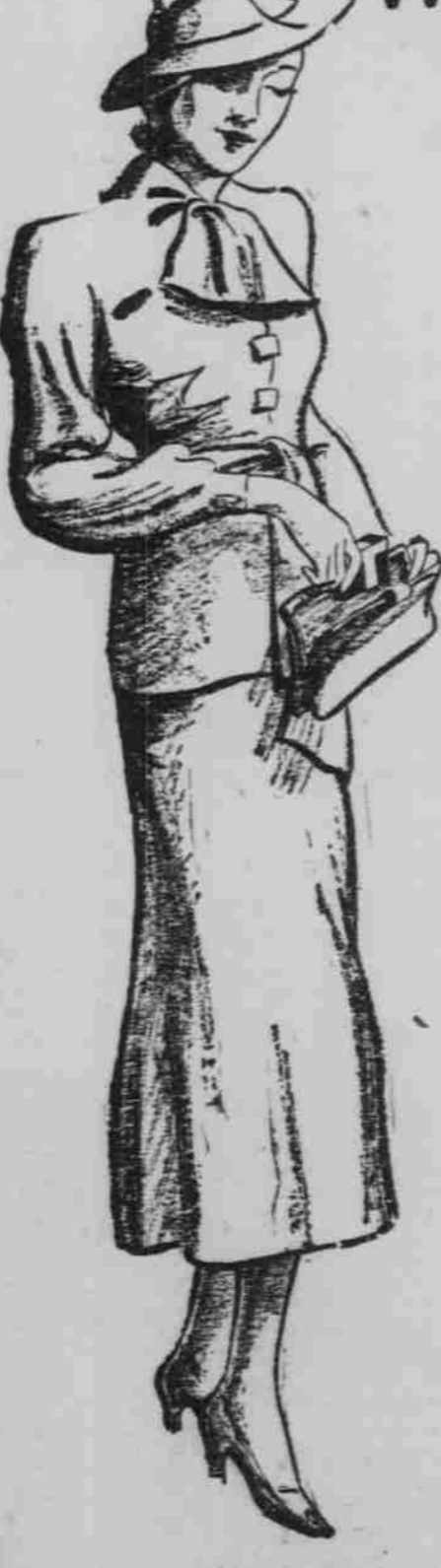
Table of financial entries for COMMISSIONER'S FUND Second District, Miller-Hasselbalch Company, etc.



Business cares rest lightly on the shoulders of J. W. Townsend, Lafayette, Ind., restaurant operator, who closes his luncheon on July 1, places a sign on the door, "Gone Fishin' Back in Sept.," and proceeds to take life easy for the summer.

Table of financial entries for JOHN R. CHRISWISSER, Ote Oil Co., George Small, etc.

Now! Sanitary Protection WITHOUT NAPKINS or BELTS



Here, at last, is a sanitary protection that does away with pads, napkins and belts . . . that brings more freedom to modern women . . . a new method that is completely invisible, and so comfortable that there is no consciousness of wearing a sanitary protection at all!

Physicians approve this hygienic new method . . . women everywhere who have adopted Bettes agree that they are more comfortable, and permit greater personal daintiness than any sanitary protection ever before devised.

Ladies Toggery - Knorr's 5c to \$1 Store