

**Cass County Farm Bureau Notes**

Copy furnished from Office of County Agent Wainscott

65 Cass county 4-H girls and boys are enjoying a three days vacation at Camp Bellevue. This is the annual 4-H district club camp participated in by Cass, Otoe, Sarpy, and Douglas county members. Visitors are welcome at camp for the Friday evening stunt program or any time Saturday.

**Judging Try-Outs**

4-H club members interested in trying out for a chance to represent Cass County at State Fair, in judging, must be in attendance at the judging day meeting in Lincoln, Tuesday, August 2nd.

Classes will be available in all projects. The high ranking members in each project will make up the teams for state fair.

**Spray for Second Brood of Codling Moths**

The long delayed, second brood of codling moths arrived in such numbers that you should begin spraying. For some weeks we have caught few or no moths, but recently the numbers jumped from ten to sixteen. There is a marked increase in pupation in the insectary where over 500 worms are under observation. The peak of emergence must be very near. Word has just come from Shubert that the increase in moths there is practically the same as here.

Another application of lead arsenate applied within a week should

protect the apples from the bulk of the worms which will begin to appear in about a week.

**Give Clothes a Sun Bath**

Clothes, draperies, or other materials harboring clothes moths should be removed from the house, brushed well and hung in the sun all day. When the are taken down they should be brushed thoroughly again before being taken into the house. By this time any larvae present should be dead. The closets where these moths were found should be thoroughly cleaned, the walls brushed and the floors scrubbed with a good soapy water. Where insects get into upholstered furniture they can often be controlled by the use of a high grade gasoline or else the furniture may be fumigated. Such furniture can be made moth-proof by the use of a good moth-proof chemical. Warehouses are usually equipped to do this moth-proofing or furniture fumigating work.

**August Planted Rye Good Early Pasture**

Providing there is plenty of moisture, August planted rye makes good early pasture for livestock, according to Prof. H. J. Gramlich, chairman of the animal husbandry department of the Agricultural College. He says experience has shown that the crop can be grown successfully for both fall and early spring pasture.

The rye came thru the ground quickly with reasonable moisture and affords pasture during the fall. Five days after planting it has come through the ground at the Agricultural College. The ground should be plowed and harrowed as early as possible before planting and is usually sowed at the rate of one and one-

half bushels per acre. Planted the first week in August following a rain, the crop will make pasture late in September and again early in the spring months. Farmers who do not desire to plant the rye in August, however, may wait until later when it can be disked in the corn stalk ground where ensilage or fodder has been cut.

**Sour Cream Cookies**

1 cup thick sour cream 1 egg  
2 1/4 cups flour 1 cup sugar  
3/4 t. soda Nutmeg Raisins  
Cream sugar and thick sour cream. Add beaten egg. Sift soda, flour and nutmeg. Stir all together. Drop from end of spoon until they are about 1 1/2 inches in size. Sprinkle sugar on top. Press raisins in center of each. Bake.

Variation:  
3/4 c. chopped nuts may be added to dough.

Shredded coconut may be used. 1/2 t. vanilla extract may be added instead of nutmeg.

Dates or raisins may be cut and added.

Cornmeal could be used instead of part of the flour.

Cocoa or melted chocolate may be used.

**Contract Feeding Facts**

A severe shortage of livestock credit brought on by falling prices and wide market fluctuations during the past two years has caused a great many growers and feeders of livestock to enter into a joint feeding enterprise known as contract feeding.

Prof. R. R. Thalman of the animal husbandry department at the Nebraska College of Agriculture says in writing a bulletin upon the subject which will be off the press soon.

In preparation of the bulletin, Thalman says no attempt has been made to promote or discourage contract feeding. Neither has any attempt been made to discuss the merits of buying and selling direct on the open market. The sole object has been to present data that will aid those interested in contract feeding and to also serve a handbook for the average livestock feeder.

While the contract method of feeding is not absolutely new, a wide experience in the employment of the contract feeding is certainly lacking, the College of Agriculture Professor says. As a result, many lopsided and unfair plans of share feeding have been used. In practically all such cases one or the other, or both, parties to the contract entered into it without information on the costs of feeding livestock or else failed to consider them when the agreement was made.

The recently published bulletin discusses such facts as shrink, death loss, overhead costs, feed costs, feeds and contracts. The best parts of 150 or more contracts are concentrated in three forms as illustrated in the booklet. Farmers are shown how they may figure their costs of gain also.

Prof. Thalman says contract feeding was popular with many Nebraska farmers last year who had the feed on hand but lacked the credit to buy stock to feed out. The trend toward contract feeding started in 1929 with the low prices of livestock and the lack of credit. Thalman estimates that thousands of lambs and cattle were fed by contract last year.

Jessie H. Baldwin, Home Extension Agent, D.D. Wainscott, Cass Co. Extension Agent

**ROAD IN BAD SHAPE**

Motorists continue to complain of the rough and dangerous condition of the unpaved stretch of road on Highway 75, north of this city. This highway, treated with oil macadam less than a year ago, quickly went to pieces under the heavy traffic and is filled with rut holes that make driving dangerous.

Complaints have been registered with the state highway department, but without avail.

**FOR SALE**

One grey team, 1400 lbs., one roan team, 1400 lbs., four good milk cows, four Red Duroc sows and 17 spring pigs, one heifer calf, two sets of very good double 14-inch harness; 20 tons red clover hay in barn and a complete line of farm machinery and lot of good small tools and two good farm wagons.

FARMERS STATE BANK, Plattsmouth, Nebr.

j26-2td; 1 sw

**LOST HOUND DOG**

White and tan hound, ears scarred from coon fights. Lost near Four Mile creek on Cedar Creek road. Please notify Henry Klinger or J. T. Porter, Plattsmouth. 1td-1tw



**THE Law of averages never fails. Protect your property with sound insurance. Then, should you suffer a loss, the law of averages will enable the insurance company to indemnify you.**

**Automobile Insurance is Important**

Get your protection from this experienced agency. If you have a loss you will appreciate the service we give with our policies. Call Phone No. 56.

**Duxbury & Davis**

We represent the Largest and Oldest Insurance Companies in America  
DONAT BLDG.

**NEW LEGION COMMANDER**

With the forthcoming departure of W. T. Distell from the city, the position of commander of the local American Legion post will automatically be taken over by Clyde Jackson, the senior vice-commander of the post. Mr. Jackson is one of the old time members of the post, having joined shortly after its organization and has been a very enthusiastic worker in the organization. Being a son of the great state of Missouri, Mr. Jackson has the "show me" spirit and which should make him a very valuable man in the position of commander. Mr. Jackson was a member of one of the Missouri regiments in the world war.

Napkins—Yellow, Green or White. 50 in pack. 10c.—Bates Book Store.

**GRASSHOPPERS IN CITY**

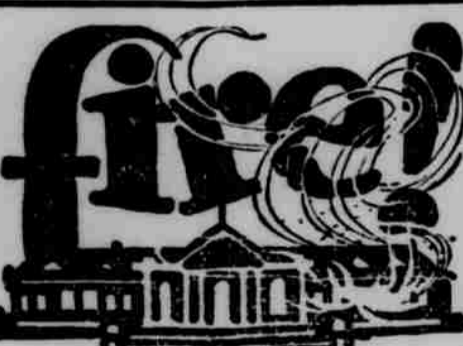
In the last few days there has been an increasing number of grasshoppers appearing in the city. These hoppers are of the large type such as has done so much damage in the past few years in this section of the west. The hoppers have so far, however, not been in such numbers as to do damage to vegetation.

Thomas Walling Company  
Abstracts of Title  
Phone 324 - Plattsmouth

**TAKEN TO NEBRASKA CITY**

From Monday's Daily  
"Rev" William Attey, who has been a prisoner at the jail here for the past several weeks, was today released from the Cass county jail, only to find Sheriff Carl Ryder, of Nebraska City, awaiting him. Attey is wanted in Otoe county on a charge of passing fraudulent checks and was taken to Nebraska City at once by Sheriff Ryder.

Dennison's Paper Dusters, kind to fine furniture and dainty hands. 10c a package of 12—Bates Book Store.



Millions of dollars' worth of property is destroyed each year by fires that 'spread'—that are often caused by some one else's carelessness! Have you enough insurance?

This agency represents the Hartford Fire Insurance Company—an institution that has been serving property owners faithfully since 1810.

Searl S. Davis  
Plattsmouth - Nebraska

**LaPlatte Parks Prove Popular with Omahans**

Ten Thousand Persons Gather at Eagles and Italian Federation Gatherings.

The vicinity of La Platte was the scene of a great gathering of Omaha residents Sunday when some 10,000 of the metropolis residents met in picnic parties.

The Eagle lodges of Omaha had arranged the first of their summer picnics at the Eagles park on the west side of highway No. 75. Just north of the Platte river. Here it is estimated that 4,000 persons were gathered during the day and to enjoy the program of sporting events and other attractions that served to pass the day, while picnic parties enjoyed their dinner at the spacious and attractive park.

The Italian federation of Omaha also staged their picnic on this date at Naevae park, a short distance from the Eagles park and at the Naevae park the attendance was estimated at 6,000. The day was taken up with athletic events, games and dancing, there being prizes awarded in each of the events. The music for the day was furnished by an Italian band and which was later initiated into the federation of the Italian societies.

The highways in the vicinity of the two parks were packed with cars despite the fact that hundreds of the cars were in the parking spaces at the parks.

These two picnics were the largest that have been held at the parks in several years and attest the popularity of the Platte river parks as entertainment places.

**RECEIVE CONVENTION CALL**

From Monday's Daily  
The official call for the annual state Legion convention to be held at Norfolk August 21, 22, 23, was received today by the local post adjutant. Plattsmouth post is entitled to three delegates and three alternates, who will be selected at the August meeting of the post to be held Thursday evening, August 4th.

Norfolk is entertaining a state Legion convention for its first time, and is laying great plans for making this year's meeting one of the most successful and largely attended of any held heretofore.

As usual, Tuesday will be parade day, and the host city is laying up some real prizes for best bands, drum corps, etc.

Convention headquarters will be at the Norfolk hotel. A registration fee of \$1.50 will be charged each delegate, alternate or guest, including admission to the commander's ball and a book of special privilege concessions.

As Norfolk is but 150 miles from here, it is probable quite a number of Plattsmouth Legionnaires will drive to the convention.

**HAVE EXCELLENT ROCK**

Ole Olson, of Weeping Water, who is superintendent of the new quarries that have been opened at that place, was in the city Monday for a few hours. Mr. Olson had with him several specimens of the rock that is being secured from the new quarries. This rock is some of the best that can be found in the west and is excellent in every way, in fact Mr. Olson states that in his long experience in the quarry business he has never found such excellent rock. They have a fourteen foot ledge of this rock in the hills east of Weeping Water, which is now being worked. Mr. Olson states that his company has several of the hills leased for quarrying and that if the conditions are favorable there will be much activity in this line in our neighboring city.

The opening of the quarry will make a fine thing for Weeping Water and it is hoped that the quarry can be operated so that it will furnish employment for a great many of the residents of that place.

**MANY SWIM AT LOUISVILLE**

The bathing beach at the state recreation grounds at Louisville was crowded with bathers throughout the afternoon and evening, including a goodly number from Lincoln and Omaha. The grounds there include some seven or eight sandpit lakes, and like other sandpits, are dangerous to all but expert swimmers. So far, however, the Louisville lakes have not been the scene of any drownings this year, the scene of stark tragedy apparently having shifted to the sandpit lake near the Platte river bridge north of this city.

**FOUR MILE TEAM WINS**

The Four Mile creek baseball team Sunday afternoon took a close and exciting game from the Plattsmouth Merchants on the local lot by the score of 5 to 2, in what should have been a shutout for the Creckers.

The pitching of Becker for the Four Mile team and March for the Merchants was excellent and the hits were few for either team, but several errors gave the visitors breaks that they took advantage of to score runs which the locals could not do.

Weldon Stoehr, Ralph Wehrbein of the Creckers and Smock of the Merchants made several sensational fielding catches that checked batting rallies of the teams.

The Creckers scored in the first and second innings and in the fourth, seventh and eighth.

With the last of the ninth inning coming up, Dick March, hurler of the Merchants, secured a nice bingle in short right field for a single and was resting on the initial sack when Bill Bond, shortstop, placed a grounder to second that escaped the fielder and rolled into the grass and weeds in short right field. March reached second as the Creckers searched in vain for the ball, March going on to third while Bond reach-

ed second and then started for the third sack with March scoring, and Bill raced on to cross the plate with the second score before the missing ball was located and thrown in.

The Merchants, however, were not able to secure the three runs needed to tie up the score as Becker tightened on them and their outs were in one, two, three order.

Both teams played a good brand of ball and barring a few bobbles in the opening innings the game was one that the fans enjoyed to the utmost.

**FIND A FLOATER**

From Wednesday's Daily  
The body of a man, apparently in the water several days was sighted shortly after noon today in the Missouri river just east of the city and near the Elledge farm. The body was towed to the vicinity of the old ferry landing where it was brought on shore and held for the investigation by the officials. The body is thought to be that of the Omaha man who a few days ago leaped from the Douglas street bridge to commit suicide.

The body will be held here until word can be received from Omaha as to the description of the man.

**BUY CHEAP- GET CHEAP**

The Bargains you buy must be measured in more than dollars and cents. Back of them must be Quality and Satisfaction. How often you may have been tempted to buy something because it was "cheap" and found when you got it that it was just that—CHEAP. Spare yourself such disappointment by buying all of your Foodstuffs at Black & White, where you get not only low price, but fine Quality as well!

- Milk, Value or Armours. 4 tall cans .19c  
Less than Small Cans formerly Sold For
- Tea, fcy. Imp. Gunpowder, 1/2-lb. . . . . 29c
- Otoe Tomato or Pea Soup, 2 cans . . . 15c
- Mackerel, 8-oz. tin for . . . . . 5c  
Especially Prepared
- Henri Imported Sardines, per can . . 5c  
Packed in Olive Oil
- Butter, Casco, quartered, per lb. . . . 18c  
Made in Plattsmouth
- Sugar, 10-lb. cloth bag . . . . . 43c
- Little Hatchet Flour, 48-lb. bag . . . 89c
- IGA Guaranteed Flour, 48-lb. bag . . 98c  
Good Quality, Low Price
- Ginger Ale, 12-oz. bottles, 3 for . . . 39c
- P & G Soap, 10 bars for . . . . . 25c
- Old Nurmberg Malt, 3-lb. can . . . . 35c  
3 Cans for \$1
- Matches, 6-box carton . . . . . 19c
- IGA Lye, 3 cans for . . . . . 29c
- Pineapple, lg. No. 2 1/2 size can . . . 14c  
Matched Slices

**GALLON FRUITS**

- ALL SOLID PACK
- Pineapple, No. 10 (gallon) tin . . . . 45c  
Crushed or Sliced
- Blackberries, No. 10 (gallon) tin . . 39c
- Apples, No. 10 (gallon) tin . . . . . 39c
- Italian Prunes, No. 10 (gallon) tin . . 39c
- Peaches, No. 10 (gallon) tin . . . . . 39c

**Meat Department**

- Beef Roast, A-No. 1 quality, lb. . . . . 16c
- Beef Shoulder Steak, 2 lbs. for . . . 35c
- Fcy. home dressed Veal Roast, lb. . . 15c
- Pork Butt Roast, per lb. . . . . 12 1/2c
- Ham Pork Roast, lb. . . . . 14c
- Pork Chops (large), 2 lbs. for . . . . 25c
- Fancy small Pork Chops, lb. . . . . 15c
- Swift's Weiners, per lb. . . . . 15c
- Coney Island Frankfurters, 2 lbs. . . 25c
- American Cheese, per lb. . . . . 18c
- Cream and Brick Cheese, lb. . . . . 20c
- Swift's Smoked Pork Butt, lb. . . . 20c
- Hamburger, 3 lbs. for . . . . . 25c
- Bacon Squares, per lb. . . . . 10c
- Home made Cottage Cheese . . . . . 15c  
Try Some—It's Delicious

**Black & White**  
Plattsmouth's Leading Cash Store