

Training Boys and Girls to Be Useful Men and Women

(Continued from Page Seventeen.)

atories accommodate two students each. No smoking or drinking is allowed on the grounds and the students are required to observe the Sabbath, which with them is Saturday, attending both morning and evening services.

College View has about two dozen business houses of different kinds, among them being a bank, printing office which publishes the Union College press and another printing establishment controlled by the International Publication society which prints all of the publications of the adventist church in foreign languages.

Business Colleges.
No city of its size in the country can boast of two as complete and up-to-date business colleges as can the capital city of Nebraska. Both of these colleges have very recently moved into new buildings, especially fitted for their use. Both are equipped with a first class faculty of teachers and a diploma from either is recognized as a guarantee of the qualifications of the holder.

Nebraska School of Business.
The Nebraska School of Business was first established as "Brown's Business College" in 1904. In 1911 it was re-incorporated with W. M. Bryant, for eight years superintendent of the School of Commerce of North Dakota, as president. Miss Gertrude Redra, superintendent of stenography in the North Dakota school, from which Mr. Bryant came, was elected vice-president and H. G. Ballard, secretary and manager.

About two years ago the college was moved from its old location to the second and third floor of the fine new building at the corner of Fourteenth and O streets. Here the officers of the school were able to carry out the plans they had made for a most complete business school. A full course in business and shorthand, covering a year for the combined course is given and the graduate of the college, if he so desires will be found a position suitable to his needs.

The Nebraska School of Business numbers among its over 500 students, those from every state in the union, nearly President Bryant is proud of his record as a business teacher, having just completed his twenty-fifth year in the work.

The Lincoln Business College is the old established school of the city. It was founded in 1884, and until recently had its quarters in the fourth story of the Oliver theater building. However, its increasing business called for more room and it has just completed and moved to its own building on the corner of Fourteenth and P streets, only a block from its former location. The new building was erected at an expenditure of \$50,000. President E. C. Bigger, of the college is immensely pleased with his new home, and with the increase in business which it has brought to the institution, which has this year about 800 students. This college gives a regular business and shorthand course, each requiring about nine months for completion.

There are fifteen teachers connected with the institution, and all students are found places when they leave the college. In fact, President Bigger insists that the supply will not fill the demand. The students are about evenly divided between male and female, and they come from nearly every state in the union.

At the State Farm.
One of the prettiest places in Lincoln is the state farm situated about two miles from the present university proper. The farm contains 250 acres and was



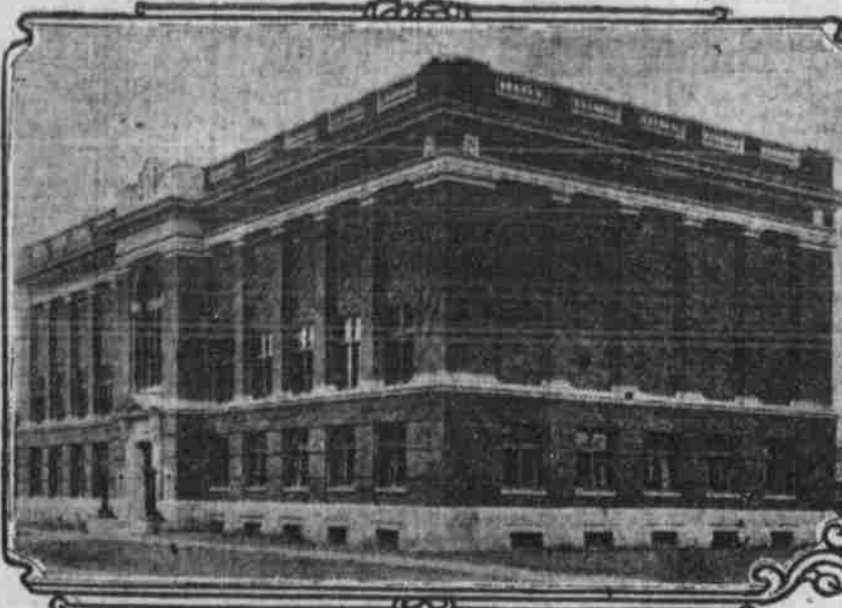
Lincoln Carnegie Library

purchased in 1874 at a cost of \$22,000. It is now estimated to be worth about \$200,000. In addition to the farm is a tract of four acres situated across the street on the south which was purchased for \$1,750.

Some of the finest buildings owned by the state are located on the state farm. Agricultural hall, built in 1904 at a cost of \$60,000; the woman's building, built in 1908 for \$65,000; the plant industry building cost \$50,000, are the three most important of the university farm buildings.

At the university farm the boys and girls receive their instruction in scientific farming, where they can learn to make two stalks of wheat grow where but one grew before, and where the very best results can be reached by putting the best into the agricultural life. Experiments in the growing of all kinds of grain are made. The farm is platted out into small pieces, in which is planted the wheat or grain at different periods and cultivated in different ways, so as to discover the best methods in which to get the best results. A large number of students from the farm of the state attend the agricultural college and during their studies there take advantage of the opportunity to take up other courses at the downtown college. It is this tendency on the part of the farm students to take advantage of the chance to attend the regular university, but are compelled to lose much valuable time between the two schools which are two miles apart, which has brought on the agitation of moving the university proper to the university farm so that the students of either who so desired, could take up work in both colleges without losing precious time covering the distance from one to the other. Many students taking the regular university course have become interested in the agricultural course and it is believed that it would be beneficial to both if the schools were so situated that these students could take both courses.

Scientific farming and scientific stock raising has made the agricultural school



COLLEGE of LAW - University of Nebraska

of Nebraska well known throughout the entire country. The stock shows and competitive stock judging meetings throughout the United States have learned to know the efficient work which is being done in the Nebraska school of agriculture and many first premiums on her stock and many premiums won by her stock judging teams has placed the agricultural farm school among the very best if not the best in the whole country.

SCHOOL OF MUSIC WELL SUPPLIED WITH TEACHERS

A powerful and potent factor in the school and college life of Lincoln is the University School of Music, of which Willard Kimball, a leading exponent in the western musical world, is conductor. The conservatory of music is directly op-

posite the main entrance to the university campus, and its close adjacency to the campus enables all of its students to enter actively in the luring enjoyments which are so manifest at all large universities and colleges. But, because of the fact that its students are essentially a part of the university at Lincoln, the school of music enjoys a maximum of efficiency in its instruction that makes it one of the best conservatories of music in the middle west. The young man or young woman who is endowed with any talent can there absorb all of the necessary technique and expression that the brilliant musical scholar must have.

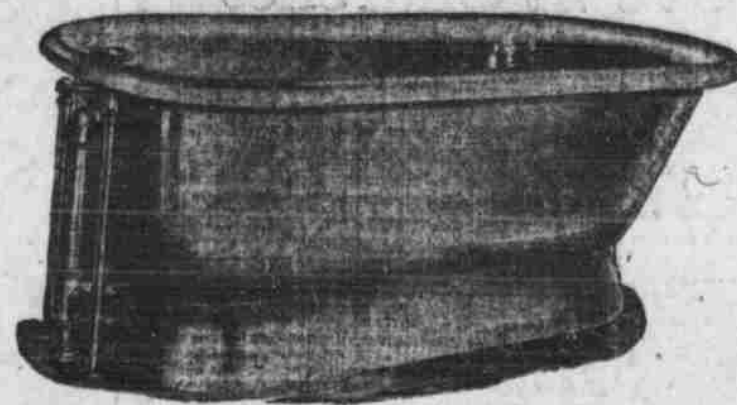
An Easter Way.
The Texas father of seventeen children has asked the governor of the state for an automobile, so he can take his family to church. One would think it would be less trouble to have the preacher hold services at his home.—Toledo Blade.

Western Supply Co.

800-822 N Street

LINCOLN, NEBRASKA

Long Distance Phones—Independent or Auto B1150



JOBBERS OF

HEATING, PLUMBING, ENGINE SUPPLIES, PERKINS WINDMILLS

A Visit To Our Showrooms Will Be Enjoyed By You.

GREEN GABLES

The Dr. Benj. F. Bailey Sanatorium

LINCOLN, NEBRASKA

AT GREEN GABLES special provision is made for the quiet and comfort of patients trying to regain their health. The surroundings are charming and homelike. It is a restful spot, a pleasant place to go, sick or well. Green Gables is equipped with approved and accepted methods for the alleviation of the suffering and the sick.

The Executive Building. This home for sick people is only a twenty minute ride from Lincoln's center. It is thoroughly equipped for the treatment of all non-contagious, non-mental diseases. It is located in a beautiful section. An ideal spot. It has a staff of four physicians and thirty nurses which enables it to give individual attention to every patient.

The Rest Cottage---is separated entirely from the main building, but is under constant supervision. This department consists of the original Rest Cottage together with the new and just completed addition, a fire-proof building of forty rooms connected with the original building by beautiful sun parlors and being as perfectly equipped for its work—the caring for mild mental cases—as any building that has ever been built by a private institution in this country.

WRITE FOR OUR ILLUSTRATED LITERATURE AND ANYTHING YOU MAY DESIRE