

THOMPSON, BELDEN & CO.

For Blouses and Tunics

Silk Nets, Georgette Crepes, Lace Allovers, Cotton Nets, Crepe Chiffons and Lace Flouncings.

New Trimmings

Beautiful crystal trimmings, silk braids, ornaments, tassels, frogs, in fact everything that's new and attractive.

Neckwear Styles

Fresh, exclusive, fashions in Roll Collars, Organie Sets, Lace Collars, Organie and Lace Vests, Lace Collars and Cuffs.

Maline Ruffs

Trimmed with fur and flowers.

The Fur Shop

The price of fine furs has not been so low for years. The prices are not guaranteed against an advance. We advise you to make your selection now. A special—Russian Pony Coats, for \$27.50 and \$32.50

The Family Hose

Black lisle with colored heels, tops and toes, so that each member may have a different color to distinguish their own hose. 35c 3 pairs for \$1.00

The Cavalier Glove

A medium weight, medium priced glove, one-clasp, pique, black, tan, white taupe. \$1.50

In anticipating the wants of the "Grown-ups" we haven't forgotten the "Little Folks." Gloves for school and dress wear. Yarn Mittens, Golf Gloves, Chamoisette and Leatherette, Mocha Mittens, Fleece-lined Gloves, Capes, and light weight dress Gloves.

Toilet Goods Specials

Manicure Sets. 75c Rubber Sponges. 15c Combination Boxes, containing 1 cake of soap, 1 bottle perfume, 1 can of talcum, all for 39c

Dresses Reduced More than Half In Price

Over one hundred ginghams and chambray dresses, formerly \$3.00 and \$4.25, will be on sale Saturday for \$1.00

Omaha Agents FOR McCall Patterns

Children's Sleeping Garments

Flannelette sleeping garments, white and colors, sizes 2 to 10 years—50c, 65c, 75c, 85c Third Floor.

Children's Flannel Skirts

Colored Flannelette Skirts, made on band—sizes 6 to 12 years—35c—50c White Flannelette Skirts, made with a cambric waist—1, 2, 3 and 4 years. 35c Third Floor.

Woman's Heavier Underwear

Cotton Fleece Vests and Pants, Merode make, for 50c Cotton Fleece Union Suits, high neck, long sleeves—Dutch neck, elbow sleeves, ankle length; all sizes. \$1.00 Wool Union Suits, high neck, long sleeves, or low neck, no sleeves; ankle length. \$1.75 Black Lisle Bloomers, at 85c Third Floor.

The Store for Shirtwaists

Is an interesting section. You will enjoy a visit to it. Inspect the dainty blouses for—\$2.95 to \$6.50

Fashionable Suits for Discriminating Women

Our suit offering appeals particularly to the woman who cares for fine tailoring, correct lines, authentic style and that indescribable something called fashion. The suit prices range from \$19.50 to \$85.00 with extremely attractive and exclusive styles for \$35.00

No Extra Charge for Alterations

THE COAT SECTION

has a most complete showing of exclusive styles with exceptional values for—

\$13.50, \$16.50 and \$19.50

An Entirely New Line of

Hats of the Unusual Sort,

Especially Produced for Winter Wear

The New Dress

Turbans

for Matron Ladies,

at

\$8.75, \$10.00,

\$12.75 and \$15

Also

Fur Hats

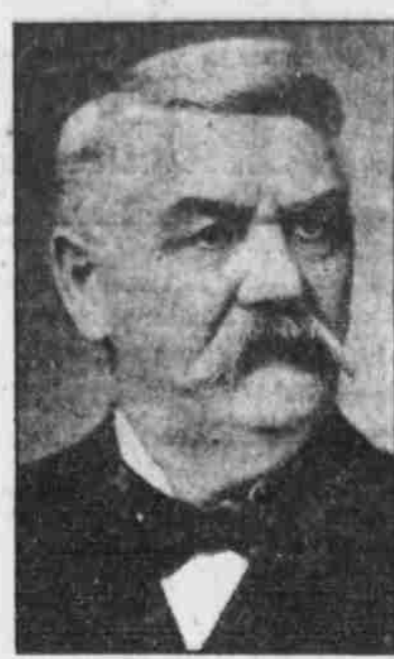
Attractive combinations for Fur and Flowers, also Fur and Novelty Materials, indicating Smart New Designs in Fur Trimmings.

Prices range from \$7.50 to \$25.00

Millinery Section—Second Floor.



RUNNING CLOSE FOR CHIEF JUSTICE OF NEBRASKA.



MANOHAR B. REESE

STEPHENS FIGURES OUT BIG PLURALITY OVER SPILLMAN

FREMONT, Neb., Nov. 6.—(Special.)—Congressman Stephens' headquarters today announced his plurality over Spillman would be \$200 on completed returns. A compilation of votes and estimates of majorities by county committees follows:

County	Steph.	Spill.	Est. Est.
Antelope	1,180	1,150	30
Boone	1,170	1,100	70
Burt	1,170	1,100	70
Calhoun	1,170	1,100	70
Chadron	1,170	1,100	70
Clatsop	1,170	1,100	70
Clay	1,170	1,100	70
Colfax	1,170	1,100	70
Cuming	1,170	1,100	70
Dakota	1,170	1,100	70
Dixon	1,170	1,100	70
Dodge	1,170	1,100	70
Franklin	1,170	1,100	70
Grant	1,170	1,100	70
Harlan	1,170	1,100	70
Jefferson	1,170	1,100	70
Kimberly	1,170	1,100	70
Lincoln	1,170	1,100	70
Loup	1,170	1,100	70
Madison	1,170	1,100	70
McPherson	1,170	1,100	70
Merrick	1,170	1,100	70
Missouri	1,170	1,100	70
Nemaha	1,170	1,100	70
Perkins	1,170	1,100	70
Platte	1,170	1,100	70
Polk	1,170	1,100	70
Rock	1,170	1,100	70
Saline	1,170	1,100	70
Stanton	1,170	1,100	70
Thurston	1,170	1,100	70
Wayne	1,170	1,100	70
Totals	10,000	9,000	1,000

County Winners

Clay County—County Judge, J. S. Logan, dem.; clerk, Ward K. Newcomb, dem.; sheriff, Paul Bonfield, dem.; treasurer, Albert Gries, dem.; coroner, A. J. Zerk, rep.; surveyor, Charles Frickert, rep.; superintendent, Paul T. Pouchard, rep.; assessor, Mabel Mirk, dem.; auditor, M. L. Corey, dem.
Dodge County—County Judge, Waldo Wintersteen, dem.; clerk, John O'Connor, dem.; sheriff, W. C. Condit, rep.; treasurer, Ernest H. Hoyer, rep.; register, Fred Klass, dem.; supervisors, Forney, rep.; Nelson, rep.; Parkert, dem.; coroner, A. P. Overgaard, rep.; surveyor, William Sanders, dem.; superintendent, John Matzen, rep.; attorney, F. W. Button, dem.
Wayne County—County Judge, James Button, ind.; clerk, Charles Reynolds, dem.; sheriff, George Porter, rep.; treasurer, T. R. Stanfield, dem.; register, Corbit, dem.; G. S. Parran, rep.; coroner, Beckenhauer, rep.; H. H. Jones, rep.; superintendent, Paul T. Pouchard, rep.; assessor, L. A. Kiplinger, dem.
Madison County—County Judge, M. S. McDuffee, ind.; clerk, T. T. Hodson, rep.; sheriff, W. M. Smith, rep.; treasurer, W. M. Darlington, rep.; register, E. H. Taylor, dem.; supervisor, W. S. Crook, rep.; coroner, C. A. Peterson, rep.; surveyor, G. L. Huntley, rep.; superintendent, N. A. Houzel, dem.; attorney, W. L. Dowling, rep.
Platte County—County Judge, John Ratterman, ind.; clerk, John Graf, dem.; sheriff, Henry C. Lachmi, dem.; treasurer, Otto E. Heber, dem.; register, Fred Carrig, dem.; supervisor, John Goetz, dem.; coroner, E. Clorber, dem.; John B. Hyde, dem.; surveyor, O. H. Swanson, rep.; superintendent, Fred S. Lecron, dem.; attorney, Otto F. Walter, dem.
Burt County—County Judge, G. A. Ireland, dem.; clerk, H. W. Whitaker, rep.; sheriff, Paul Bonfield, dem.; treasurer, Fraser Cook, rep.; coroner, H. A. Johnson, rep.; surveyor, W. M. Connors, rep.; superintendent, Herbert Rhodes, rep.; attorney, Herbert Rhodes, rep.
Gosper County—County Judge, C. G. Lewis, dem.; clerk, W. T. Pouchard, dem.; sheriff, H. L. Braug, rep.; treasurer, R. Chambers, dem.; supervisor, J. E. Chambers, dem.; superintendent, F. W. Montgomery, rep.; attorney, C. E. Rosarth, dem.; commissioners, Fred Harm and C. G. Nelson, dem.
Dundy County—County Judge, L. D. VanDerhook, dem.; clerk, Halton Earl, dem.; sheriff, C. F. McGonagle, dem.; treasurer, K. R. Logan, rep.; coroner, E. J. Pickens, rep.; surveyor, Ira Lamb, rep.; superintendent, Lorna White, attorney, C. A. Ratcliffe, dem.
Turks Reize British Ships. LONDON, Nov. 6.—The Exchange Telegraph company has given out a dispatch from its Liverpool correspondent saying that the Turks have seized the British steamers Assiout and City of Khirs at Smyrna.
See Want Ads Produce Results.

DEMS TO MAKE LAWS AT OWN SWEET WILL

(Continued from Page One.)

Clay County—County Judge, J. S. Logan, dem.; clerk, Ward K. Newcomb, dem.; sheriff, Paul Bonfield, dem.; treasurer, Albert Gries, dem.; coroner, A. J. Zerk, rep.; surveyor, Charles Frickert, rep.; superintendent, Paul T. Pouchard, rep.; assessor, Mabel Mirk, dem.; auditor, M. L. Corey, dem.

Woman Suffrage Contest. Suffrage seems to have met with less favor in the state than first returns indicated.

Thirty-two counties and 200 other precincts, including Douglas county, give a majority of 5,000 against it.

The proposition for workmen's compensation appears to be meeting with approval, while university removal is the reverse.

Following are the tabulations:

For Governor.	1914	1913
Morehead	1,180	1,150
Hoar	1,170	1,100
Rock	1,170	1,100
Morehead	1,180	1,150
Hoar	1,170	1,100
Rock	1,170	1,100

County	Steph.	Spill.
Antelope	1,180	1,150
Boone	1,170	1,100
Burt	1,170	1,100
Calhoun	1,170	1,100
Chadron	1,170	1,100
Clatsop	1,170	1,100
Clay	1,170	1,100
Colfax	1,170	1,100
Cuming	1,170	1,100
Dakota	1,170	1,100
Dixon	1,170	1,100
Dodge	1,170	1,100
Franklin	1,170	1,100
Grant	1,170	1,100
Harlan	1,170	1,100
Jefferson	1,170	1,100
Kimberly	1,170	1,100
Lincoln	1,170	1,100
Loup	1,170	1,100
Madison	1,170	1,100
McPherson	1,170	1,100
Merrick	1,170	1,100
Missouri	1,170	1,100
Nemaha	1,170	1,100
Perkins	1,170	1,100
Platte	1,170	1,100
Polk	1,170	1,100
Rock	1,170	1,100
Saline	1,170	1,100
Stanton	1,170	1,100
Thurston	1,170	1,100
Wayne	1,170	1,100
Totals	10,000	9,000

Legend for the above table: Steph. = Stephens, Spill. = Spillman.

County	Steph.	Spill.
Antelope	1,180	1,150
Boone	1,170	1,100
Burt	1,170	1,100
Calhoun	1,170	1,100
Chadron	1,170	1,100
Clatsop	1,170	1,100
Clay	1,170	1,100
Colfax	1,170	1,100
Cuming	1,170	1,100
Dakota	1,170	1,100
Dixon	1,170	1,100
Dodge	1,170	1,100
Franklin	1,170	1,100
Grant	1,170	1,100
Harlan	1,170	1,100
Jefferson	1,170	1,100
Kimberly	1,170	1,100
Lincoln	1,170	1,100
Loup	1,170	1,100
Madison	1,170	1,100
McPherson	1,170	1,100
Merrick	1,170	1,100
Missouri	1,170	1,100
Nemaha	1,170	1,100
Perkins	1,170	1,100
Platte	1,170	1,100
Polk	1,170	1,100
Rock	1,170	1,100
Saline	1,170	1,100
Stanton	1,170	1,100
Thurston	1,170	1,100
Wayne	1,170	1,100
Totals	10,000	9,000

County	Steph.	Spill.
Antelope	1,180	1,150
Boone	1,170	1,100
Burt	1,170	1,100
Calhoun	1,170	1,100
Chadron	1,170	1,100
Clatsop	1,170	1,100
Clay	1,170	1,100
Colfax	1,170	1,100
Cuming	1,170	1,100
Dakota	1,170	1,100
Dixon	1,170	1,100
Dodge	1,170	1,100
Franklin	1,170	1,100
Grant	1,170	1,100
Harlan	1,170	1,100
Jefferson	1,170	1,100
Kimberly	1,170	1,100
Lincoln	1,170	1,100
Loup	1,170	1,100
Madison	1,170	1,100
McPherson	1,170	1,100
Merrick	1,170	1,100
Missouri	1,170	1,100
Nemaha	1,170	1,100
Perkins	1,170	1,100
Platte	1,170	1,100
Polk	1,170	1,100
Rock	1,170	1,100
Saline	1,170	1,100
Stanton	1,170	1,100
Thurston	1,170	1,100
Wayne	1,170	1,100
Totals	10,000	9,000

State Superintendent. Whitehead, Thomas. 1,180

County	Steph.	Spill.
Antelope	1,180	1,150
Boone	1,170	1,100
Burt	1,170	1,100
Calhoun	1,170	1,100
Chadron	1,170	1,100
Clatsop	1,170	1,100
Clay	1,170	1,100
Colfax	1,170	1,100
Cuming	1,170	1,100
Dakota	1,170	1,100
Dixon	1,170	1,100
Dodge	1,170	1,100
Franklin	1,170	1,100
Grant	1,170	1,100
Harlan	1,170	1,100
Jefferson	1,170	1,100
Kimberly	1,170	1,100
Lincoln	1,170	1,100
Loup	1,170	1,100
Madison	1,170	1,100
McPherson	1,170	1,100
Merrick	1,170	1,100
Missouri	1,170	1,100
Nemaha	1,170	1,100
Perkins	1,170	1,100
Platte	1,170	1,100
Polk	1,170	1,100
Rock	1,170	1,100
Saline	1,170	1,100
Stanton	1,170	1,100
Thurston	1,170	1,100
Wayne	1,170	1,100
Totals	10,000	9,000

County	Steph.	Spill.
Antelope	1,180	1,150
Boone	1,170	1,100
Burt	1,170	1,100
Calhoun	1,170	1,100
Chadron	1,170	1,100
Clatsop	1,170	1,100
Clay	1,170	1,100
Colfax	1,170	1,100
Cuming	1,170	1,100
Dakota	1,170	1,100
Dixon	1,170	1,100
Dodge	1,170	1,100
Franklin	1,170	1,100
Grant	1,170	1,100
Harlan	1,170	1,100
Jefferson	1,170	1,100
Kimberly	1,170	1,100
Lincoln	1,170	1,100
Loup	1,170	1,100
Madison	1,170	1,100
McPherson	1,170	1,100
Merrick	1,170	1,100
Miss		