

Character Hats and The New Collars



Charming "Character Hat" Which Brings Out the Fresh, Girlish Charm of Wearer and Costume



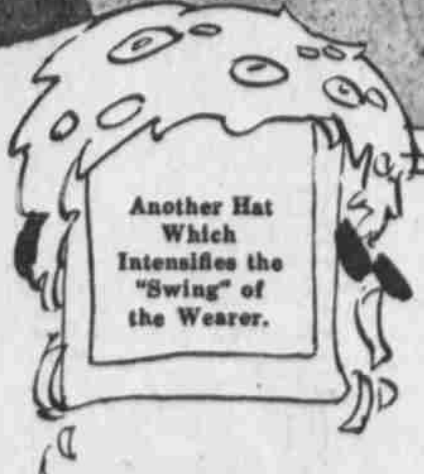
Charmingly Demure Hat and One of the New High "Lucile" Collars.

LADY DUFF-GORDON, the famous "Lucile" of London, and foremost creator of fashions in the world, writes each week the fashion article for this newspaper, presenting all that is newest and best in styles for well-dressed women. Lady Duff-Gordon's Paris establishment brings her into close touch with that centre of fashion.

By Lady Duff-Gordon

JUST a few words on "character hats," or character in hats. You can study the collars in the pictures. Hats are quite one of the important things for the well-dressed woman to study. They are really the exclamation point on the woman herself and her gown. They intensify the outward manifestations of character, and therefore they should be closely studied in relation to character. In fact, every hat ought to be a character hat, and the tragedy of so many women is that it is not. The three photographs of hats on this page show clearly what I mean. In each case the hat emphasizes, and is in harmony with the dominant note of girl and dress. The sweet ingenuousness of the model in the large picture is reflected and "sign-pointed" by the character of her hat. How absurd would be the dashing little hat with the birds on this face! It would be absurd because it would not harmonize with the character of the wearer. These, alas, are only too few words on this important subject.

An Advance Photograph of One of Cheruit's New Afternoon Coats of Black Falles Silk, Showing the Enormous New Collar of Black Velvet.



Another Hat Which Intensifies the "Swing" of the Wearer.



A "Character Hat" in Which the Little Birds Interpret the "Dash" of the Gown.