

Bride Fashions and Season-End Gowns



Lady Duff-Gordon, the famous "Lucile" of London and foremost creator of fashions in the world, writes each week the fashion article for this newspaper, presenting all that is newest and best in styles for well-dressed women.

Lady Duff-Gordon's Paris establishment brings her into close touch with that centre of fashion.

A Season-End Tailored Suit of Black and White Checker Board, with Apron Front and Coat of Black Velvet. Trimmed with White Fur. ("Lucile" Model.)

By Lady Duff-Gordon
("LUCILE")

HERE is a bridal dress I have just finished showing at Newport. Bridal dresses must have the longest of trains to be thoroughly up to date. This one is of flesh colored tulle over white satin. The bodice is encrusted with pearl passementerie. The satin train falls from the shoulders and the veil from the head. The hair is brushed straight back from the forehead, and is fastened under the wealth of orange blossoms.

Below it is another bridal dress—built for the stage it is true—but still capable of adaptation. The train is really not too long for the bride who is not behind the footlights.

The amusing little sketch at the right shows one of the new long coats. It is of brown duvetyne, trimmed with fox. It is the very latest note.

The other amusing little sketch has the apron front which will be so popular this Fall. The skirt is a black and white checkerboard. The little coat, like the apron, is

The Long Trains for Wedding Belles and New Coats Described by Lady Duff-Gordon

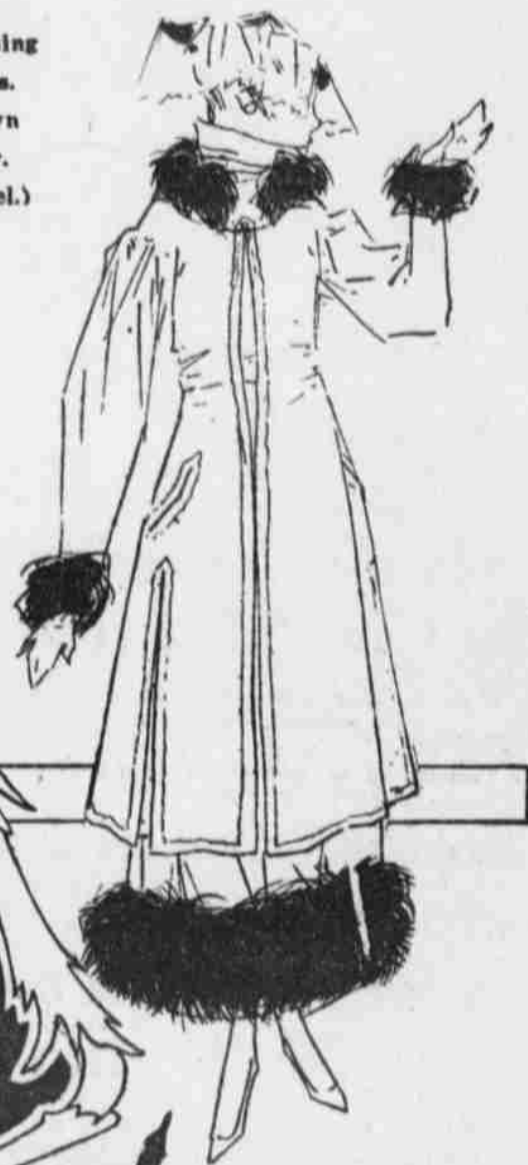
of black velvet. Touches of green give sparkle to the costume. White fox completes the effect.

I call attention to the lines of this coat and apron. In their straight effects they foreshadow a dominant factor in the coming season.

This is, of course, the season-end, and the season-end is one of the most difficult times for women. The old clothes have become too familiar—and the new ones are not quite in yet. Still, to the smart woman there is no time more important than this. The season-end is when the styles are born. It is a time of experimentation, of inspiration. One little accidental touch in the effort to polish up the old a bit may mark the birth of an entirely new fashion.

A little later and the modes will be fixed. So now is the time for every American woman to do what I continually preach—use her brains and ingenuity and see if she herself cannot create an entirely new mode.

The Newest Thing in Long Coats. Brown Duvetyne and Fox Fur. ("Lucile" Model.)



Bridal Dress of Flesh-Colored Tulle, with 1840 Bodice of White Satin and Encrusted with Pearl Passementerie; Veil of Flesh-Colored Tulle, Falling from Head.

Below Another Wonderful "Lucile" Dress Especially Created by Lady Duff-Gordon for Stage Setting.

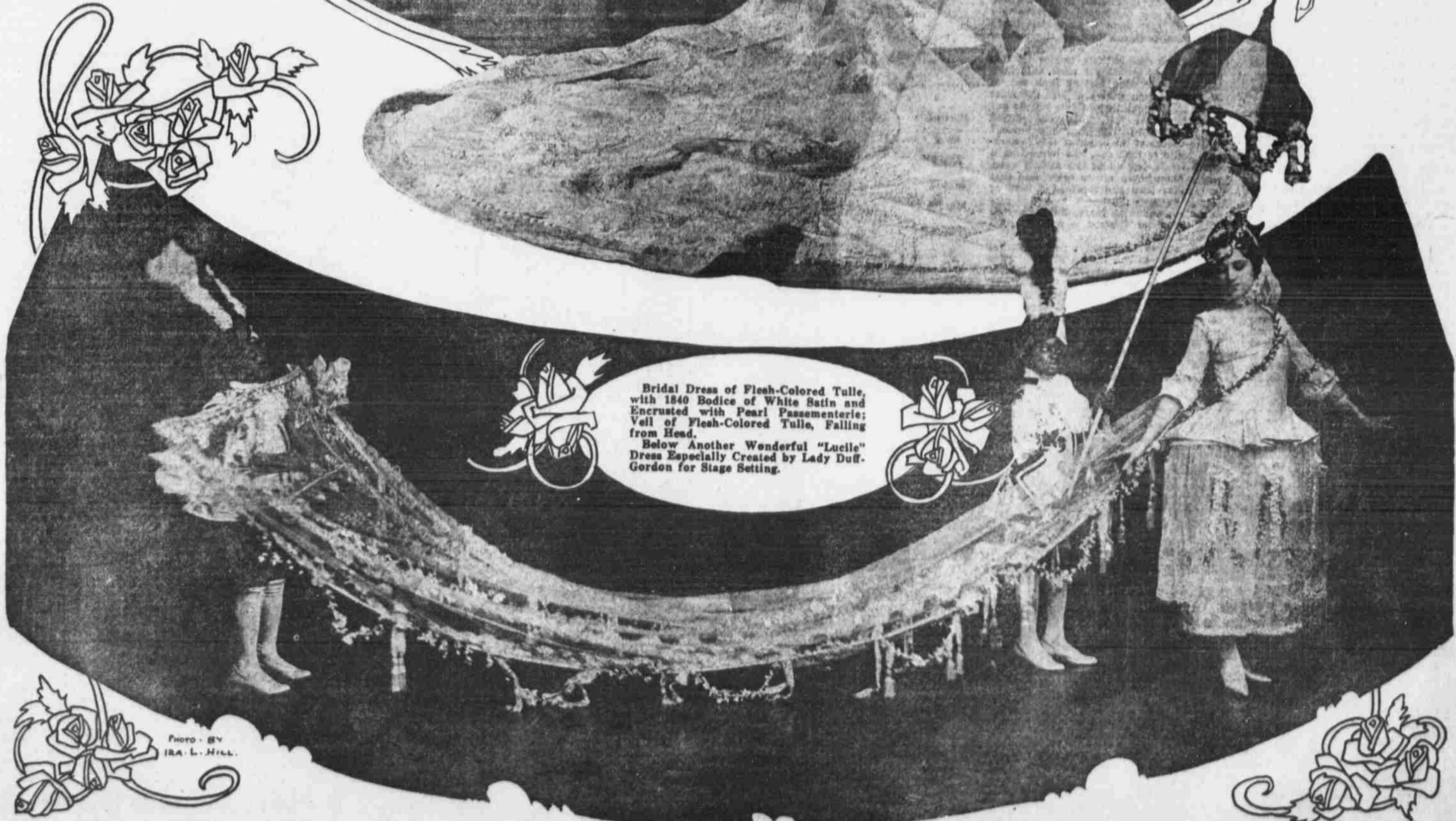


Photo by IRA L. HILL.