

**NEW YORK STOCK MARKET**

Session Largely Repetition of Those of the Days Preceding.

**WAR SPECIALTIES DECLINE**

NEW YORK, July 23.—So far as actual results were concerned today's stock market was largely a repetition of the days immediately preceding. There was a further downward revision of some of the war specialties, to which Bethlehem steel common and offered proved the most notable exceptions, the former repelling its recent high quotation of 204 and the latter making a new high at 125. Baldwin locomotive also broke into new ground at 77 1/2. A few other industrials and equipments participating more or less actively in profitable war contracts rose and fell within comparatively narrow limits.

Railroad stocks were more prominent but almost wholly at the expense of quoted values. Shares like St. Paul, Canadian Pacific Southern Railway preferred and Texas & Pacific descended to low prices in years. St. Paul's minimum of 73 being the record since 1898. All the carriers in the southern and southwestern sections of the country were heavier at declines of 1 to 4 points.

Actual new low prices were established by Missouri Pacific at 25, Seaboard Air Line preferred at 3 3/4, Rock Island at 10 1/2 and Norfolk & Southern at 17. The chief factor in connection with the heaviness of the southern stocks was the discounting cotton outlook, resulting from the war, together with unfavorable earnings. Cotton options were mostly higher, however, in response to an urgent demand for the staple from foreign sources.

Dealings were the lightest of any recent session, the overture in the specialties being from 1/4 to 1/2 under that of the midweek. Baldwin locomotive, Westinghouse and American can together with United States Steel, made up one-third of the total of 45,000 shares.

International conditions, particularly the impending reply of this government to Germany, furnished the basis for much of the day's hesitation. There were no developments of interest in the markets for foreign exchange. The probable success of the new Canadian note offering by our bankers threw some light on the investment in gold. Monetary conditions were unchanged except for a more free acceptance of industrial collateral loans. Bonds were irregular with a renewal of foreign selling. Total sales, net value, aggregated \$1,550,000. United States bonds were unchanged on call.

**New York Money Market.**

NEW YORK, July 23.—MERCANTILE PAPER—95 1/2 per cent. STEELING EXCHANGE—Sixty-day bills \$4.70; demand, \$4.75; cables, \$4.71. SILVER—Bar, 47 1/2; Mexican dollars, 26 1/2.

BONDS—Government, steady; railroad, irregular.

MONEY—Call, steady; high, 1 1/2 per cent; low, 1 1/4 per cent; ruling rate, 1 1/2 per cent; last loan, 1 1/2 per cent; closing bid, 1 1/2 per cent; offered at 1 1/2 per cent.

Time loans, firm; sixty days, 2 1/2 per cent; ninety days, 2 3/4 per cent; six months, 3 1/2 per cent.

**Bank Clearings.**

OMAHA, July 23.—Bank clearings for Omaha today were \$2,475,540.55, and for the corresponding day last year, \$2,367,025.86.

**BERLIN ANNOUNCES GAINS**

German War Office Tells of Minor Successes Made in the West.

**GRENADE ATTACKS FAILURE**

BERLIN, July 23.—(Via London, 4:50 p. m.)—At the war office today the following communication was given out: "The nightly hand grenade attacks of the enemy north and northwest of Souchez were repulsed. In the Champagne district we successfully blew up several mines and occupied the borders of the openings thus made.

"In the forest of La Pretre a French night attack failed. In the Vosges fighting is proceeding. An attack by the enemy against the Linzkapf-Barrenkopf line, north of Muenster, was repulsed after severe fighting at close quarters before and in the positions of the Bavarians and Mecklenburg Chasseurs. We captured two officers and sixty-four Alpine troops.

"A French attack against Reich-Ackerkopf also was unsuccessful. Near Metzweil we ejected the French from their advanced positions, which, according to our plan, we evacuated in order to avoid losses.

"As a reprisal for the repeated bombardment of Thiaucourt and other places between the Meuse and the Moselle, our artillery yesterday bombarded Pont-A-Mousson. Our airmen dropped bombs on the railway triangle at St. Hillars, in Champagne, and forced the airmen of the enemy to retreat.

"The barracks at Gerardmer also were bombarded. In an aerial fight over Comblains we destroyed a battle airplane of the enemy.

"Easter theater: In Courland there is continued fighting. We are pursuing eastward the retreating Russians. Yesterday we captured three machine guns and many munition cars and field kitchens.

"Our troops advanced closer to the Narew bridge head position. Before Rosan we stormed at the point of the bayonet the village of Milny and the fortification at Izyel. At the latter place we captured 240 prisoners. Night sorties from Novocorzevsk failed.

Southeastern theater: "The west bank of the Vistula was cleared of the enemy from Janowiec, west of Kasmierz, to Granica. In the wooded ground south east of Kosienca fighting is proceeding with rear Russian guards.

"Between the Vistula and the Bug the Teutonic allies succeeded in breaking the obstinate resistance of the enemy at several points and forced the Russians to retreat.

"Linskapf and Barrenkopf are three and four kilometers, respectively, north of Muenster. Granica is ten kilometers south of Ivangorod."

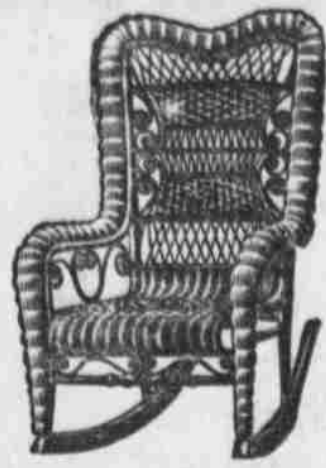
**A COMPARISON**

Would be the most convincing proof of what we continually advertise. That our prices are absolutely the lowest—that our assortments are larger—and the quality of our furniture and general home furnishings is really much above the average—the kind that will make a home cozy and comfortable and will stand the test of hard service.

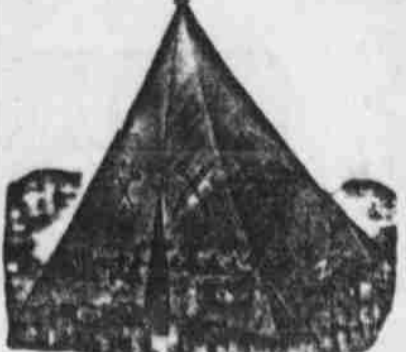
**OUT OF THE HIGH RENT DISTRICT**



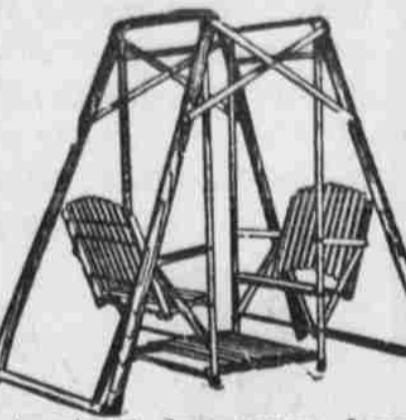
Substantial Lawn Mowers are 18 inches and guaranteed to give excellent service. Our price ..... \$2.95



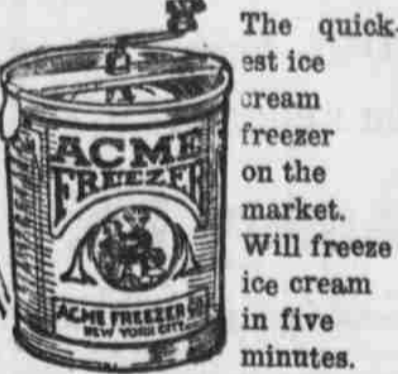
An excellent Porch Rocker, made of heavy fiber in the brown finish. Exceptionally well made with a closely wadded back and seat. Our price ..... \$1.95



Child's Indian Tent, made of heavy canvas, nicely ornamented, complete with stake, pole and rope. Our price ..... \$1.10



A splendid four-passenger Lawn Swing, finished in red with natural wood seats, which are adjustable. The entire swing is thoroughly well bolted and screwed together. Our price ..... \$4.95



The quickest ice cream freezer on the market. Will freeze ice cream in five minutes. Ice Cream Freezers that are absolutely sanitary. No solder used on the inside of cream can. Our price ..... 49c

You will actually save from 25% to 50% by buying your porch and lawn furniture at the Central Furniture Store.

YOU MAKE YOUR OWN TERMS AT THE CENTRAL

**CENTRAL**  
17TH AND HOWARD STS.

Clothing Dept. Second Floor Sale Is Now On



Clothing Dept. Second Floor Sale Is Now On

**Men's Clothing Ordered Out!**

No matter what the value, no matter how high the quality, it is time for Clearance. So all men's Suits and Trousers have been ordered to move. Radical reductions are the rule, as the most desirable of wearables go marching out of the store. The sale includes all our high-class Hart, Schaffner & Marx Suits; Hart, Schaffner & Marx and Princess Trousers, as well as elegant Palm Beach Suits—certainly very desirable right now. Look at the bargains:

**Hart, Schaffner & Marx Suits**

- All \$25.00 Suits . . . \$16.75
- All \$20.00 Suits . . . \$14.75
- All \$18.00 Suits . . . \$12.75
- All \$15.00 Suits . . . \$ 9.75

**Men's Trousers**

- Hart, Schaffner & Marx and Princess Trousers in this great sale, regular \$4.50 \$6.00 and \$7.00 Trousers, for only.....
- The \$5.00 and \$5.50 H., S. & M. Trousers.....\$3.50
- And \$3.95 and \$4.50 Princess Trousers.....\$2.50

**Palm Beach Suits**

- Genuine Palm Beach Suits; the lightest, coolest procurable, wonderful values at...\$5.00 and \$8.50
- Pure Shantung Silk Suits—Hart, Schaffner & Marx make—and they are priced very low at...\$15.00
- The regular \$10.00 Mohair Suits are now.....\$6.95
- And the \$15.00 to \$18.00 Mohair Suits go at...\$12.50



IT PAYS Try HAYDEN'S First IT PAYS

**DEPARTMENT OF LABOR**

**SPECIALS HERE NEXT WEEK**

The United States Department of Labor is sending fifty people to the California expedition in two special cars which will pass through Omaha at 10:15 a. m. next Wednesday. The Chicago & Northwestern railway handles them from Chicago to Omaha and from Omaha the party travels over the Union Pacific.

A "For Sale" ad will turn second-hand furniture into cash.

**MRS. JAMES C. ENEWOLD**

**DIES IN SAN FRANCISCO**

Mrs. James C. Enewold, former pioneer resident of Omaha, died Thursday in San Francisco at the age of 68 years. Mrs. Enewold came to Omaha in 1878 and was during her residence here a prominent member of the Danish church. She is survived by her husband, now in San Francisco, and three children, Henry J. and Frederick C. Enewold, and Mrs. C. G. Carbery, and two sisters, Mrs. Elizabeth Hendrickson and Miss Hansine Boes, all living in Omaha.

Apartments, flats, houses and cottages can be rented quickly through Bee "For Rent" Want Ads.

**Reduced Electric Rates**

**NEW Maximum Lighting Rate, 8 Cents.**

**OLD Maximum Lighting Rate, 11 Cents.**

**EFFECTIVE AT ONCE**

**Applicable to All Bills Rendered on and After August 10th**

**Lower Electric Rates Promote Household Comfort**



**An Electric Iron Should Be in Every Home**

**Electrical Household Appliances Lighten the Housewife's Burden--Saves Time**

ELECTRICITY IS DOING MUCH to reduce toil and discomfort in the home—to make life easier and more worth living for women.

Chief among the most favored electrical appliances is the Electric Flatiron—now sold at reduced prices.

Electric Irons save in time, steps and temper. They can be used wherever there is an electric light socket. They do better work than old fashioned irons.

Electric Fans, Table Stoves, toasters, washing machines,

Vacuum Cleaners, Coffee Percolators and a host of other devices are playing a big part in making woman's work more attractive.

See them at our office or your electrical supply store.

**OMAHA ELECTRIC LIGHT AND POWER COMPANY**  
GEORGE H. HARRIES, President

Maximum electric lighting rates have been reduced approximately 40% within the past 2 years due to physical improvements and growth of business