

REAL ESTATE—INVESTMENTS

AN INVESTMENT that provides for your old age; insurance for your family; a good, permanent income; moderate investment will do it. Write or call W. T. SMITH CO., City National Bank Bldg.

REAL ESTATE—EXCHANGES

15-apartment flats on North 25th. Price \$15,000. Encumbrance on Georgia Ave., equity \$12,000; encumbrance, \$6,000. O'Keefe Real Estate Co.

REAL ESTATE—BUS-PROPT

FOUR-STORY BRICK The Collins' heirs insist that we sell their warehouse on 13th, near Farnam. It ought to appeal to any small wholesale concern wanting to locate permanently in their own building; 4 stories and basement, 2x28. Well built. About 11,000 sq. ft. floor space. Send for out of building with price.

REAL ESTATE—BUS-PROPT

ONE-QUARTER BLOCK, northwest corner 15th and Davenport, 12x12 feet, 1/4 blocks from postoffice, 4 blocks from new Ford building. For sale, or will lease for long term; act quick; large close-in corners are scarce.

REAL ESTATE—BUS-PROPT

WANTED—To buy on monthly payments, small store room with living rooms above, in Central school district. Phone Red 784.

REAL ESTATE WANTED

WANTED—To buy on monthly payments, small store room with living rooms above, in Central school district. Phone Red 784.

FINANCIAL

Real Estate, Loans, Mortgages. WE are ready at all times to make loans on first-class city property and eastern Nebraska farms. Rates on request.

REAL ESTATE WANTED

WANTED—To buy on monthly payments, small store room with living rooms above, in Central school district. Phone Red 784.

FINANCIAL

Real Estate, Loans, Mortgages. WE are ready at all times to make loans on first-class city property and eastern Nebraska farms. Rates on request.

REAL ESTATE WANTED

WANTED—To buy on monthly payments, small store room with living rooms above, in Central school district. Phone Red 784.

FINANCIAL

Real Estate, Loans, Mortgages. WE are ready at all times to make loans on first-class city property and eastern Nebraska farms. Rates on request.

REAL ESTATE WANTED

WANTED—To buy on monthly payments, small store room with living rooms above, in Central school district. Phone Red 784.

FINANCIAL

Real Estate, Loans, Mortgages. WE are ready at all times to make loans on first-class city property and eastern Nebraska farms. Rates on request.

REAL ESTATE WANTED

WANTED—To buy on monthly payments, small store room with living rooms above, in Central school district. Phone Red 784.

FINANCIAL

Real Estate, Loans, Mortgages. WE are ready at all times to make loans on first-class city property and eastern Nebraska farms. Rates on request.

REAL ESTATE WANTED

WANTED—To buy on monthly payments, small store room with living rooms above, in Central school district. Phone Red 784.

FINANCIAL

Real Estate, Loans, Mortgages. WE are ready at all times to make loans on first-class city property and eastern Nebraska farms. Rates on request.

REAL ESTATE

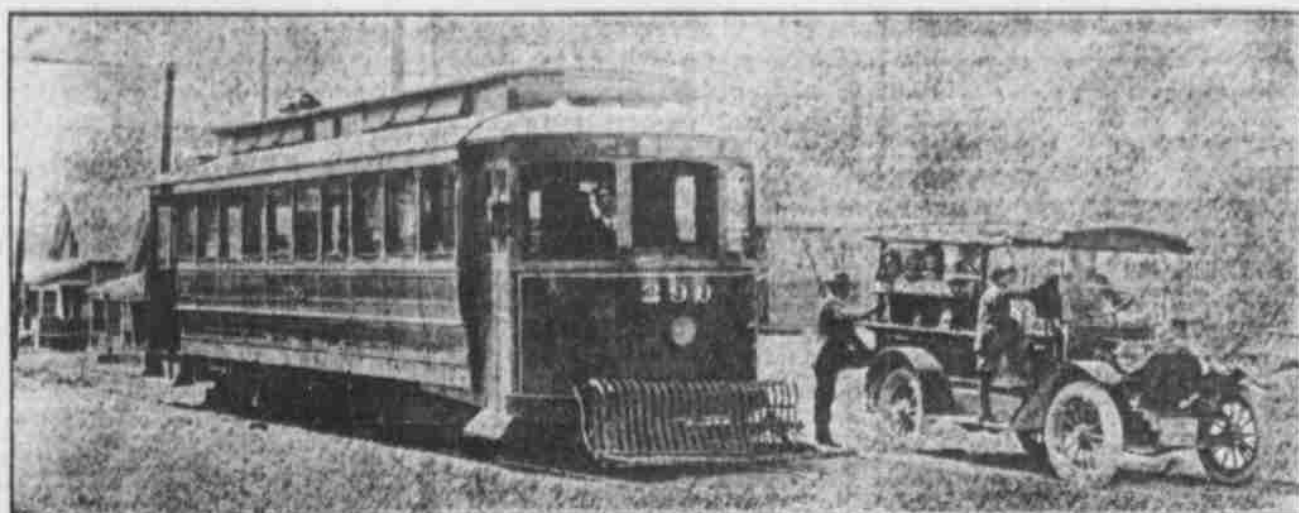
REAL ESTATE

REAL ESTATE

REAL ESTATE

REAL ESTATE

REAL ESTATE



Showing Benson Gardens Jitney, Connecting With End of Benson Car Line, Which Has Been Run Continuously Since April 1st (Last Year).

On April 1st (last year), we established a Jitney route on West Main Street paved road directly West of Benson along the North side of Benson Gardens to the new town of West Benson, which was laid out late last fall.

The automobile service has been kept up continuously since it was established with hourly service during the day and half hour service mornings and evenings, and has been a success from the beginning.

Arrangements have been made to continue this service for the year 1916; and also to keep this jitney service until extension is made by the street car company on West Main street, Benson, to the new Townsite of "West Benson." Owing to the rapid growth of this rapidly growing district, it is now assured that the jitney service will be kept up and improved as the surroundings develop.

We have also made arrangements for Free Transportation to and from the end of car line for everyone making their home in Benson Gardens Addition, who are employed in the City of Omaha.

Since we established the jitney route the Benson School Board have made arrangements to carry all school children living in the surrounding districts West of Benson, free of charge to and from the big new Benson school, which is quite an advantage to people living in Benson Gardens.

Many new homes have been started lately in this new acreage subdivision. There is no acreage tract near the City of Omaha so well located and as well adapted for the raising of

Chickens, Growing Fruit and Garden Truck, Our Terms on One Acre, \$10 Down, \$10 Per Month Half Acres, \$10 Down, \$7.50 Per Month

Everyone of these acres are going to increase in value just as sure as Omaha and Benson continue to grow.

Acres have proven to be the best investment in the past and will continue to show the biggest increase in the future. Don't overlook this opportunity.

Call at this office for plats and price list; or call up by phone, Tyler 50, and we will have one of our salesmen take you out and show you the unsold acres.

HASTINGS & HEYDEN,

NEW PHONE TYLER 50. 1614 HARNEY STREET.*

ABOUT DEVELOPMENT

On April 11th, less than one year ago, we announced the purchase of the land now Minne Lusa Addition. Work was immediately started, the corn stalks were burned and all the streets and lots were brought to permanent grade.

Twelve miles of walks were laid, six miles of permanent water mains were put in and six miles of large sewer mains were started.

The addition was platted on July 22d, 1915, and since that time we have sold over 500 lots to 250 buyers. Fifty beautiful new HOMES ARE being built under Building Restrictions. We sold, to the School Board a block of seventeen lots close to the center of the tract. Got 30th street paved and paving ordered on every street in the entire tract, amounting to 60,000 yards—this work will be DONE early this summer.

Think what this vast development means to those who buy lots there at the present LOW PRICES and EASY TERMS. We have about 300 lots to sell this summer. Come out today and see why 250 DIFFERENT BUYERS bought for Homes, Investment and speculation.

Simply Wonderful

is the expression of all who see it. It is the LARGEST addition ever platted in Omaha at one time and the BEST proposition ever offered to lot buyers.

Large lots close to car line with sewer mains, water mains, walks, grading and seeding all paid for.

\$550, \$600, \$650, \$700, \$750 \$800 and \$900

Look at lots in any addition in Omaha or Dundee. Minne Lusa lots are BETTER than most of them, AND AT PRESENT you can buy them for one-half the price.

Buy Now—Easy Terms

while the prices are low.

CHARLES W. MARTIN & CO.

Tyler 187. 742 Omaha Natl. Bank Bldg.*

a motorcycle, a summer cottage, a Morris chair. And he sold them through THE BEE Want Ad columns.

Pianos, Furniture and Rug Storage

Our facilities for the storage of these goods cannot be excelled anywhere. The piano rooms are constructed with the sole aim of keeping the instrument in as perfect tone as possible. Furniture, rugs and carpets are carefully stored in clean, sanitary, moth-proof rooms.

If you are contemplating storing goods it will pay you to see us first. Our methods and facilities will please you. Our charges for this service are very reasonable.

Packing and Shipping

This branch of our business is thoroughly systematized, thereby insuring efficient service. Patrons intrusting the details of packing to us save MONEY, ANNOYANCE and, frequently, SEVERE LOSSES.

We employ only experienced and polite men who know how to pack your goods for shipment. Our rates are very reasonable. We can frequently save you considerable in freight charges on your shipment.

Why not call us up for particulars? Phone—

DOUGLAS 288 Fidelity Storage & Van Company

SIXTEENTH AND JACKSON STREETS.*

Headquarters for Good Bargains

- \$1,100—40-foot lot near the corner of 30th and Farnam; paving all paid. A very cheap lot for a brick flat.
\$1,250—N. E. corner 32d and Cuming; suitable for business or residence; cheapest lot in the addition.
\$3,500—87x128, 22d and Jones Sts. Other ground in same block held at twice this price.
\$2,750—121x118, vacant corner in West Farnam district, suitable for apartment house, flats or detached houses.
\$3,950—49-foot, south frontage on Harney St. Paving all paid. This is the cheapest lot on Harney street and will double in value within three years.
\$8,000—Brick flats at 25d and Howard; very well built and rented cheaply, at \$240 per year.
\$11,000—28th and Howard, brick flat; income, \$1,650.
\$12,000—120x170, partly improved; right downtown, within two blocks of the Grain Exchange.
\$13,000—28th and Howard, 28 feet, improved.
\$22,500—100 feet, corner on 24th, near Farnam, partly improved. This is the cheapest corner in this whole district. Can arrange terms.
\$21,750—115-foot frontage on Farnam St., close in, with income of \$2,700. This is cheaper than vacant ground in the same block.

Residence Bargains

- \$2,750—Corner lot, six rooms, all modern, in the Field Club district, just one block to car. Make very easy terms.
\$4,500—Bemis Park, A brand new house, stucco finish, fully modern in every way, with two fire places; hardwood finish throughout; full lot; complete and ready to move into, with a cash payment of \$750.
\$5,500—But want an offer, 3402 California St. A very well built 8-room, modern house, including sleeping porch; oak floors and hardwood finish throughout; nicely decorated. For quick sale will make a decided sacrifice.
\$6,000—Dundee. One of the best values in this addition; an attractive house, built for a home, has living room, with fireplace; dining room, sun room, complete kitchen and breakfast room; 3 bed rooms and sleeping porch. Full south front lot, with cement driveway and garage. \$1,500 cash will handle.

Dundee, \$6,500, Brick and Stucco

This is a 8-room, completely modern and very attractive home, located at 4821 Dodge street. Must be sold this week, or off the market. Note the arrangement; large living room with extra large stone fire place, dining room, kitchen, breakfast room and den, all on the first floor; 3 bed rooms, sleeping porch and the bath room on second floor; breakfast room on first floor, can easily be used as maid's room; paving taxes paid in full. This is a bargain and terms can be arranged.

Glover & Spain, Doug. 2882, 319-20 City National.*

A Chance to Own a Good Home CHEAP

Houses Must Be Moved to Make Way for New School Buildings

The Board of Education MUST sell at once the five houses, 1314 to 1332 South 29th Street, immediately north of Park School, also the school building at 38th and Jackson Streets, South Side.

Sealed bids must be in hands of the Secretary of the Board of Education by 1:00 p. m. Thursday, March 30th. Bids will be opened at 2:00 p. m. Terms of Sale, CASH. Board reserves the right to reject any or all bids. 30 days from date of sale allowed for moving the buildings. All improvements, together with bricks in basements, heating plants, pipes, etc., to go with houses.

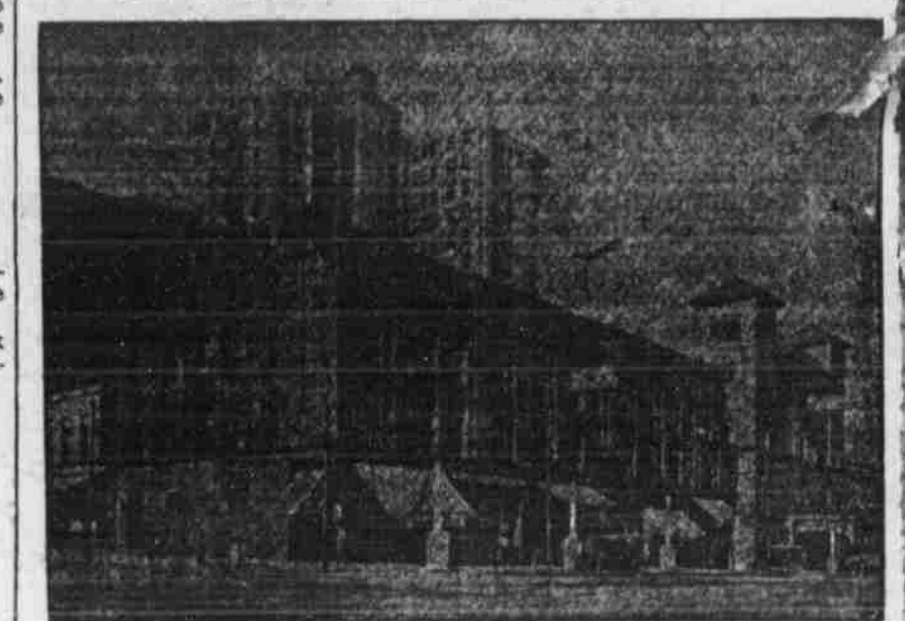
JANITOR OF PARK SCHOOL HAS KEYS AND WILL SHOW THE HOUSES.

CERTIFIED CHECK AMOUNTING TO TEN PER CENT OF OFFER MUST ACCOMPANY EACH BID.

Full Particulars Given by Secretary of the Board of Education, 505 City Hall

Business Property Investment ESTABLISHED HOTEL BUSINESS

INCLUDING Three-story and basement, good brick building, 60x132 feet in size, with 6 retail store rooms and 86-room hotel and hotel furniture and equipment and good will in well-established and profitable hotel business; also 95-year lease on lot 66x132 feet at low rental, without reappraisal. Location northwest corner 15th and Howard Sts., Omaha, in same block with City National Bank Building and Orpheum Theater. Retail stores alone will pay leasehold rental, taxes and insurance. BUILDING, HOTEL FURNITURE AND BUSINESS AND LEASE ALL FOR \$36,000.



An unusual opportunity to make a business property investment and purchase a going, profitable business. For Further Information Call Upon or Address, GEORGE & COMPANY, Phone Douglas 756. City National Bank Bldg. Omaha.

SPRING PICK UPS Gold Nuggets

Get Next to These Bargains. Lot on Farnam St. and 44th St.; 60 feet front; all specials paid, \$900. 10-foot on Cass St., facing 25d St.; beautiful view; just think, only \$1,250.

Six full lots, 1/4 acre, northwest of Dundee and close to Benson car line, the whole block for \$500. Two large lots in Redmon's Sub. on 42d St. and Benham Ave., fine for gardening; price for both, \$350.

FARM AND RANCH LANDS

FREE FARM IN ARKANSAS 125.38 acres of government land open for homestead April 20; located along and near the Missouri and North Arkansas railroad; ideal for fruit, poultry, stock or general farming; some timber. Write for particulars. J. C. Murray, G. P. A., Desk in Harrison, Arkansas.

FREE FARM IN ARKANSAS

125.38 acres of government land open for homestead April 20; located along and near the Missouri and North Arkansas railroad; ideal for fruit, poultry, stock or general farming; some timber. Write for particulars. J. C. Murray, G. P. A., Desk in Harrison, Arkansas.

FREE FARM IN ARKANSAS

125.38 acres of government land open for homestead April 20; located along and near the Missouri and North Arkansas railroad; ideal for fruit, poultry, stock or general farming; some timber. Write for particulars. J. C. Murray, G. P. A., Desk in Harrison, Arkansas.

FARM AND RANCH LANDS

Colorado Lands. FREE GOVERNMENT LANDS in Colorado; fine soil and climate; unusual opportunity; official pamphlets free. Manager Immigration Department, Clason Bldg., Denver.

California Lands.

FOR SALE OR EXCHANGE FOR \$25,000 (preferably clear). Control (25 per cent) of prosperous California land company, owing subdividing and farming, with complete tractor equipment, 500 acres at Riverside, Cal. Property includes 25 acres valuable marketable nursery stock. Balance in crop for large hog ranch. Prospective large profits. Hogs, nursery, fruit specialty and subdivision. Submit, Owner, 27 Story Bldg., Los Angeles, Cal.

Iowa Lands.

80 ACRES. 11 miles southeast of Co. Bluffs, 50 acres in cultivation, some timber, fair improvements. Price \$20 per acre; about \$1,500 cash, balance on easy terms. O'Keefe Real Estate Co., 1018 Omaha Natl. Bank. Doug. 2115.*

Michigan Lands.

BIG LAND SALE, 6,000 ACRES in eight state capital, Helena, Mont. Fertile soil, big crops, best markets. 20 acres up, \$15 to \$25, easy terms. Write free, Western States Land Co., Helena, Mont.*

Mississippi Lands.

RICH upland imp. farms, 100 acre up wards. Corn, cotton, alfalfa, cattle, hogs; large and small tracts; easy terms. G. P. Stebbins, 109 Chicago-