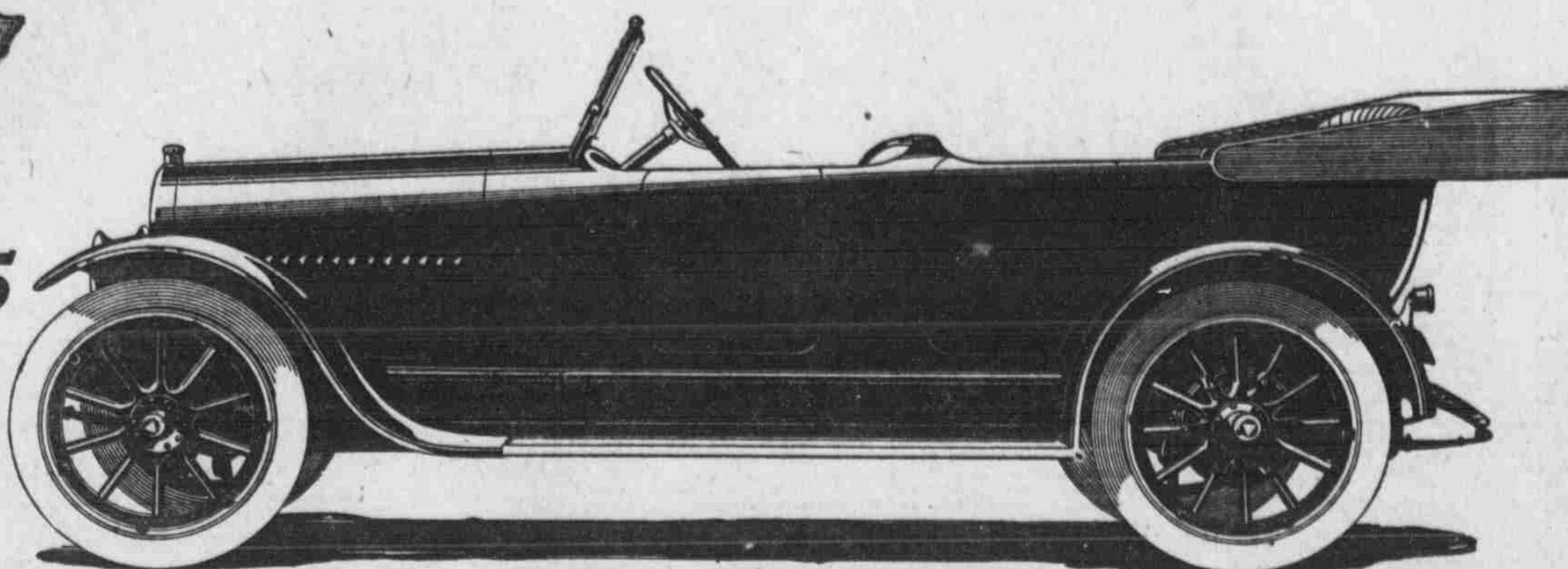




\$1375
at Detroit

Patented by Hudson
December 28, 1915
Patent No. 1165861



7-Passenger Phaeton. Five Other Body Styles

Hudson Super-Six

The Greatest Car of Any Show

80% More Efficiency

New Limits of Endurance

The World's Record Breaker

A 7-Passenger Super-Six Makes Fastest Time for Touring Cars up to 100 Miles, in Official Tests, Under A. A. A. Supervision

100 miles in 80 min., 21.4 sec. averaging 74.67 miles per hour, with driver and passenger.

The best previous stock car time was made by a car with more cylinders, more cylinder capacity and driver only.

75.69 miles in one hour with driver and passenger.

Some laps were made at 76.75 miles per hour.

70.74 miles in one hour, carrying 5 passengers, with top and windshield up.

The best previous time for stock cars similarly equipped was made by a car with more cylinders, more cylinder capacity, and with two passengers only.

Standing start to 50 miles an hour in 16.2 sec.

All these Hudson records were made with the same stock car, using the same motor, at Sheepshead Bay Speedway in November, under supervision of the American Automobile Association.

During these tests the car was driven 1,350 miles at top capacity, at speed exceeding 70 miles per hour, without discoverable wear on any part.

An endurance record seemingly impossible.

Proving the most powerful motor per cubic inch displacement that the world has ever known.

A new monarch appears at the Show this year, with records to prove its supremacy.

It is a lightweight Six, simple and economical. No added cylinders or size.

But it shows 80 per cent more efficiency than like-size motors heretofore developed.

It means that a Six—the ideal type of motor—has outtravaled Eights and Twelves. Its records have never been matched.

And this Super-Six is a Hudson invention, controlled by Hudson patents. So, for the first time, an epoch-making feature is found in only one car at the Show.

SMALL, LIGHT, BUT 76 H. P.

The Hudson Super-Six, with this patented motor, remains in the Light Six class. Its cylinders are 3 1/2 x 5—identical with the Hudson Six-40. And its motor follows long-established practice in all respects save one. It involves no experiments whatever.

The legal rating of this size motor is 29.4 horsepower. That's the rating accorded by the Society of Automobile Engineers.

In the best former types this size was made to deliver 42 horsepower at maximum.

The Super-Six delivers 76 horsepower.

2563-67 Farnam St., Omaha

LIST OF DEALERS:
Arlington, Neb.—Fred Bahrkamp.
Atkinson, Neb.—John Nelson.
Berlin, Neb.—A. E. Schell.
Blair, Neb.—G. A. Rathman.
Central City, Neb.—F. F. Hall.
Clarkson, Neb.—Kopac Bros.

Cody, Neb.—Tansey & Stotts.
Cosed, Neb.—W. Robertson.
David City, Neb.—Kopac Bros.
Fremont, Neb.—Opas Follack.
Gene, Neb.—C. L. Harris.
Humphrey, Neb.—John Eckhoff.
Madison, Neb.—F. P. Schmitt.

That's 80 per cent more than formerly, motor size considered. Thus the Super-Six, for its cylinder capacity, is by far the most efficient motor known.

34 H. P. WAS WASTED

A motor of this size actually creates about 85 horsepower in energy. In former Light Sixes it delivered 42 horsepower. So 34 horsepower was heretofore wasted, as compared with the Super-Six.

That waste lay in vibration, causing friction. We have saved that waste by wiping out vibration.

No extra power is developed, no extra fuel is consumed. Simply by conserving the energy created we attain this vast reserve power.

NEVER SUCH SMOOTHNESS

That 80 per cent of added efficiency comes through added smoothness. One result, at every speed, is quiet, flowing power. You never knew such bird-like motion, such freedom from vibration.

That vast reserve power in a light car creates a marvelous performer. One may creep on high gear and pick up with record quickness. Hills are climbed without effort. Sand and mud present small opposition. One rarely needs to change from high gear.

GUY L. SMITH—"Service First"

Milldale, Neb.—E. M. Davanport.
Newman Grove, Neb.—Newman Grove Auto Co.
Norfolk, Neb.—C. O. Stahl.
So. Omaha, Neb.—Kamler-Adkins Co.
Papillion, Neb.—J. D. Clark.
Plattsmouth, Neb.—P. T. Becker.

Platte Center, Neb.—Platte Center Auto Co.
Schuyler, Neb.—Kopac Brothers.
Spalding, Neb.—F. J. O'Hara.
Valentine, Neb.—Valentine Auto Co.
Valley, Neb.—Wickland Parson Auto Company.
Bentley, Ia.—M. A. Anderson.

Clarinda, Ia.—J. A. Johnson.
Council Bluffs, Ia.—Wm. Roper, Jr.
Glaswood, Ia.—L. R. Ferguson.
Harlan, Ia.—Booth Implement Co.
Hawcock, Ia.—I. H. Grever.
Logan, Ia.—Olson & Longman.
Margoia, Ia.—Hanneman Brothers.
Missouri Valley, Ia.—W. W. Foote.

Paris, Ia.—J. E. Peterson.
Red Oak, Ia.—Petty Auto Co.
Riverton, Ia.—Samuels & Morgan.
Schleswig, Ia.—Boyer & Binkley.
Shenandoah, Ia.—A. F. Woodward.
Wilcox, Ia.—The Jones Store.
Walnut, Ia.—Reimers & Larson.
Vall, Ia.—J. P. Duffy.

7-Passenger Phaeton, \$1375 at Detroit
Also Roadster, Cabriolet, Touring, Sedan,
Limousine and Town Car

HUDSON MOTOR CAR COMPANY, DETROIT, MICH.

Phone Douglas 1970

SEE THE HUDSON SUPER-SIX, SPACE 10 AT THE AUTO SHOW