

County Journal.

ISSUED 1888.]
 COUNTY PAPER.
 IN THE COUNTY.
 CELEBRATION OF AN
 IN THE COUNTY.
 Price, \$2.00
 Editor.
 APRIL 7, 1892.

Public Schools of Amer-
 ica.
 of the Public Schools
 the Executive Com-
 munean Public School
 the following Message:
 ber, 1892, the 400th
 discovery of America,
 served everywhere in

marked in Chicago by
 the Columbian Expos-
 ition may also be sig-
 nificant and village in
 the celebration of which
 the centre.
 of the Republic will
 centres for all these
 A national public
 simultaneous with
 will awaken a pop-
 ular coming Exposition.
 is the fact that the
 right to occupy the
 in the celebration,
 the one character-
 istic link all neighbor-
 hood can thus furnish a
 national celebration.
 the ripe fruit of the
 American civilization.
 of today sways the
 me.

of this suggestion
 public school scholars
 The plan was first
 Youth's Companion,
 hands of letters were
 to the enthusiasm
 responded.
 Auxiliary of the
 on then took up the
 on all the people of
 the day in their
 suggesting that the
 the centre of the

of education were
 the fitness of giving
 the first place in
 Anniversary. At their
 local Convention in
 Brooklyn, in Feb-
 ruary, 1892, they
 took charge of the
 school by appointing
 the under-
 committee to lead
 commemoration.
 committee now appeals
 to the first
 you, scholars of the
 schools, to arouse a senti-
 ment in your schools
 and in your neigh-
 borhoods the grand way of celebrat-
 ing the discovery of America. Educators
 teachers will meet you from their
 and it is for you to begin.

you will make it succeed if you unite
 that it ought to be done. The in-
 terest of the public will be awak-
 ened if scholars join in the earnest request
 that the school be allowed to be the cen-
 tre of the day's observance.
 There are millions now in the
 schools who have a chance to
 act a part in a movement which will
 be a pleasure to every child and will strength-
 en the coming cen-
 tennial.

is to determine,
 message, that you
 do it. Show our school
 Then show this
 every patriotic
 to help you if you
 earnest. Take the
 committee and the
 consent and aid are

the support of all
 school vote that it
 tion.
 er this public vote
 ent of a strong com-
 charge. This com-
 de up jointly from
 and friends of the
 ittee should in all
 those who are most
 the work may not be
 ble change of teach-
 ers.
 ences will be fur-
 ve committee. It
 apted to any school,
 more elaborate ex-
 whenever desired.
 al program will be
 gresses may be the
 in the Republic; and
 at the Chicago
 program may be

mined that the celebration shall be
 worthy of the day. The local press will
 be the most valuable of all supports; and
 the earliest effort of your local commit-
 tee should be to enlist its sympathy and
 request its co-operation. Ask your local
 paper to print this message.

On October 13th the stars and stripes
 should be floating from every school
 home in the Republic.

It is the hope of the friends of common
 school education that not one public
 school in the United States will allow
 itself to be left out in this most memora-
 ble celebration.

EXECUTIVE COMMITTEE.
 FRANCIS BELLAMY, Chairman, represent-
 ing The Youth's Companion, Boston.
 JOHN W. DECKINSON, Secretary of Mas-
 sachusetts Board of Education.
 THOMAS B. STOCKWELL, Commissioner of
 Public Schools of Rhode Island.
 W. R. GARRETT, Superintendent of Public
 Instruction of Tennessee.
 W. C. HEWITT, Superintendent of Michi-
 gan Educational Exhibit at World's Fair.

OFFICIAL DIRECTORY.
STATE OFFICERS:
 James E. Boyd, Governor, Lincoln, Neb.
 J. J. Major, Lieutenant Governor
 J. L. Allen, Secretary of State
 T. H. Benton, Auditor
 John E. Hill, Treasurer
 G. H. Hastings, Attorney General
 W. C. Humphrey, Land Commissioner
 A. K. Gandy, Supt. Public Instruction

CONGRESSIONAL DELEGATION:
 A. S. Paddock, U. S. Senator, Beatrice
 W. E. Manderson, U. S. Senator, Omaha
 W. J. Bryan, Congressman 1st Dist., Lincoln
 W. A. McKelgan, " 2d " Red Cloud
 O. M. Kern, " 3d " Broken Bow

JUDICIARY:
 S. Maxwell, Chief Justice, Fremont
 C. E. Norval, Associate Judge, Seward
 A. S. Post, Associate Judge, Columbus
 D. A. Campbell, Clerk and Reporter, Lincoln

FIFTEENTH JUDICIAL DISTRICT:
 G. P. Eickold, Judge, O'Neill
 Alfred Bartow, " Chadron
 Conrad Lindeman, Clerk, Harrison

COUNTY OFFICERS:
 S. Barker, County Judge
 Conrad Lindeman, Clerk
 W. J. Gaylor, Treasurer
 A. Southworth, Supt. Public Instruction
 Chas. Reilly, Sheriff
 Geo. J. Shuter, Coroner
 S. B. Dew, Surveyor
 Conrad Lindeman, Clerk of District Court
 J. T. Canley, County Attorney

BOARD OF COMMISSIONERS:
 John A. Green, (chairman), 3d District
 F. W. Knott, " 1st "
 J. J. Weber, " 2d "

LEGISLATIVE:
 W. Wilson, Senator, Dist. No. 14, Chadron
 El. L. Heath, Rep., Dist. No. 3, Rushville

VILLAGE OFFICERS:
 Thomas Reily (chairman), Trustee
 Grant Guthrie, " "
 C. E. Verity, " "
 C. H. Weller, " "
 Conrad Lindeman, " "
 W. H. Davis, Clerk
 G. Guthrie, Treasurer
 J. W. Scott, Street Commissioner

SCHOOL OFFICERS:
 Mrs. E. G. Hough, Director
 W. B. Wright, Moderator
 G. W. Hester, Treasurer

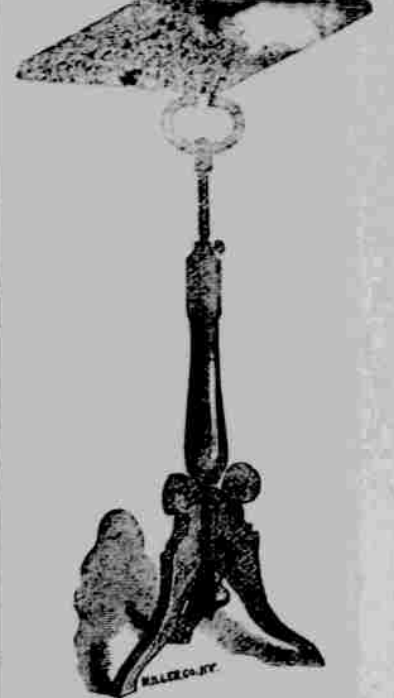
TERMS OF COURT:
 District Court, at Harrison, commences
 April 13th and November 21st, 1892.
 County Court, at Harrison, commences
 first Monday of each month.

CITY CHURCHES AND SOCIETIES.
 M. E. Church—Preaching each alternate
 Sunday at 10:30 a. m., and every Sunday
 evening at 7:30. Rev. W. O. GLASSER, Pastor.

**Episcopal services on the second Wednes-
 day of each month, at 7 o'clock p. m., Com-
 munion at 8 p. m.**
 CHAS. E. SNAVELY.
 Methodist Sunday School meets every Sun-
 day morning at 11:30.
 Mrs. W. O. GLASSER, W. H. DAVIS,
 Superintendent, Secretary.

While School meets at the church each Sun-
 day afternoon at 2 o'clock.
 S. O. C. BASSETT, Supt.

Adjustable Extension Stand.



Two Rock Stand, Mule Stand, Horse Stand, Allam Stand, Rifle Stand, Flower Stand, also Lamp, Lecture Stand, Library, Office, Posture and Checker Stand and each. Hard wood, reliable finish, height 24 inches. Height extended 36 inches. Weight 17 lbs. Size of top 24" x 18" x 12". Price \$5. KERRICK CO., Fair-
 bank, N. Y., 24 West Broadway St., Boston, Mass.

INDIANA RANGE CO. MANUFACTURERS OF WROUGHT STEEL RANGES



Guaranteed to be the most economical, most durable and most perfect Range on the market. Suitable for hard or soft coal, or wood.

Send for catalogue to
INDIANA RANGE CO. EVANSVILLE, IND.

A LAMP FOR THE MILLION



NEVROSE LAMP & MFG. CO., ST. LOUIS, MO.

\$6.00 COMPLETE SEE IT BEFORE YOU PAY



To sell you once means to always sell you. For a short time we offer this unheard-of bargain. The case is genuine Sil-
 ver and is guaranteed for durability, finish and appearance. The watch is fully equal to Coin Silver, and is guaranteed to wear and retain their color a lifetime. Stem wind and set. Remember we do not offer you an "American Style" movement, but a Genuine American movement of the well known name. TRY ONE! Sent by Express C. O. D. with privilege of examination. Send for our illustrated Wholesale Catalogue.

Garden City Watch Co. 265 Dearborn St., CHICAGO, ILL.



NEW HOME SEWING MACHINE CO. CHICAGO, ILL.

Send for
 EVERY VARIETY OF
REPEATING ARMS CO.,
 New Haven, Conn.

SELF-CLOSING OILY WASTE CAN



GREAT FIRE PRECAUTION
 A NECESSITY
 In the Factory, Engine Room, Machine Shop, Plumber's and Painter's Shops, and any place where oily rags or cloths are used. They are acknowledged by all to be the best thing for the purpose ever invented.
 SEND FOR CATALOGUE
Frank E. Fitts Mfg. & Supply Co., 76-78 Pearl Street, Boston.

ARE 20 YEARS NAUGHT?

ESTABLISHED 1868.
 These are PIANO HAMMERS—they alone actuate the tone. OTHER makers talk and think more about CASES. We have a process by which the felt covering REMAINS elastic and uncompressed after years of HARD PLAYING. All other hammers get MATTED DOWN like an old MATTRESS, and soon yield tiny tones—not music.
 WE GIVE IT AWAY.
 The reason why pianos carry high prices on the catalogues, and the SYSTEM of DISCOUNTS—with frank and candid inside information, worth many dollars—WHATEVER PIANO YOU BUY.
 We also send, post paid, an elegant illustrated Catalogue, explaining above, and very large colored illustrations
 The FURNITURE part of the "Wing" Piano is worthy of its interior merits.
 Learn what we have to whisper, then BUY WHERE YOU WILL. If we are chosen, distance is no consideration—We pay the freight.
 OUR PIANOS HAVE WON our own confidence. Hence we send freely on trial, AND, with every WING piano bought, there goes a signed warrantee for NINE LONG YEARS.
 Write to-day a LITTLE BIT (postal) and get what COST US MANY TIMES AS MUCH—beautiful illustrations, etc.

1868 WING & SON, 245 Broadway, opp. City Hall, NEW YORK, 1891
 42-And in 130 Dealers Stores.



TWINNERS DRY HOP YEAST 5c THE QUICK RISER FOR LIGHT BREAD
 WATERLOO YEAST CO. DETROIT MICH.



JOHNSON & FIELD CO., RACINE, WISCONSIN, Manufacturers of "THE RACINE" FARM AND WAREHOUSE FANNING MILLS DUSTLESS GRAIN SEPARATORS AND LAND ROLLERS.



These Mills and Separators have long been used by the Farmers, prominent Millers, Grain and Seed Dealers throughout the United States, who highly recommend them as being the BEST MACHINES ever made for cleaning and grading Wheat, Barley, Oats, Corn and Seeds of every description.
 They do the work more thoroughly, have greater capacity, built stronger and heavier and better finished than any other Mills. Six different sizes, two for Farm Use, four for Warehouse, Elevator and Millers use.
 The Land Rollers are the BEST and CHEAPEST for the money.
ALL MACHINES WARRANTED.
 Write for Circulars and Prices before buying.
 We can vouch for the reliability of this firm.—EDITOR.

ESTEY PIANOS

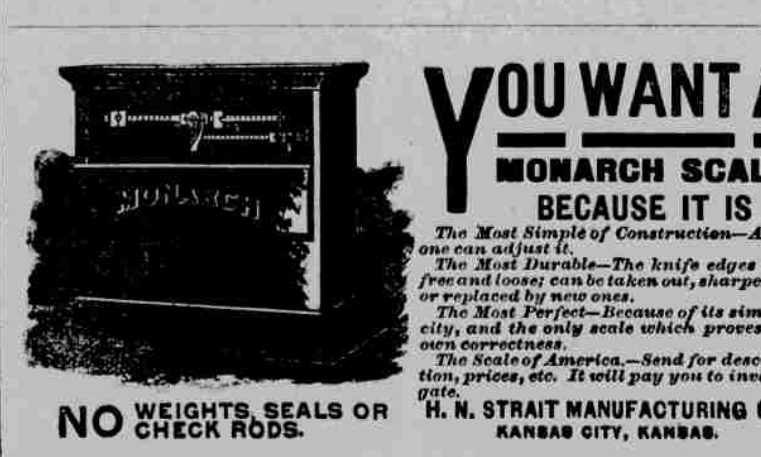
Are strictly first-class in every detail, possess an absolutely perfect repeating action and handsome cases. Fully warranted.
ESTEY ORGANS
 Are the best in the world, and have led all others for years. Over 210,000 in use. The people are bound to have the best, and will have none but the ESTEY. Time payments or cash, as customers prefer.
 Call and see us, or send for Catalogues and full information.

ESTEY & CAMP, 233 State Street, Chicago.
 St. Louis House, 916 & 918 Olive St.
 Mention this Paper.

LOVELL DIAMOND CYCLES.

No. 1, Solid Tires, \$85.00	STRICTLY HIGH GRADE.	No. 3C, Ladies' Cushion Tires, \$95.00
No. 2, Cushion Tires, \$95.00		No. 4, Convertible Solid Tires, \$85.00
No. 3, Ladies' Solid Tires, \$85.00		No. 4C, " Cushion Tires, \$95.00

OUR Cushion Tires ARE Warranted ALL PARTS Interchangeable.
 No better machine made at any price.
 Bicycle Catalogue Free.
\$85.00 JOHN P. LOVELL ARMS CO., MANUFACTURERS, BOSTON, MASS.
 Send six cents in stamps for our 400 page illustrated Catalogue of Guns, Rifles, Revolvers, Sporting Goods of all kinds, etc.



YOU WANT A MONARCH SCALE BECAUSE IT IS
 The Most Simple of Construction—Any one can adjust it.
 The Most Durable—The knife edges are free and loose; can be taken out, sharpened or replaced by new ones.
 The Most Perfect—Because of its simplicity, and the only scale which proves the oven correctness.
 The Scale of America—Send for description, prices, etc. It will pay you to investigate.
H. N. STRAIT MANUFACTURING CO., KANSAS CITY, KANSAS.

\$66.00 FOR THE STRONGEST BUGGY
 THE BEST RIDING THE BEST LOOKING THE STRONGEST BUILT
 Ever before offered.
 This is a special offer. We sell them at this price to introduce them, regular price is \$75.00.
 WE ARE WHOLESALE MANUFACTURERS.
 TURBES IN ONE CHANCE IN
 Rubber Top, Elliptic Springs, Plano Body, upholstered in a fine grade of cloth, or leather if preferred.
 Three or four bow top. Either wide or narrow track. We would also furnish Corning body in place of Plano body if desired.
 Send for Catalogue.
FREDONIA MANUFACTURING CO., YOUNGSTOWN, OHIO.