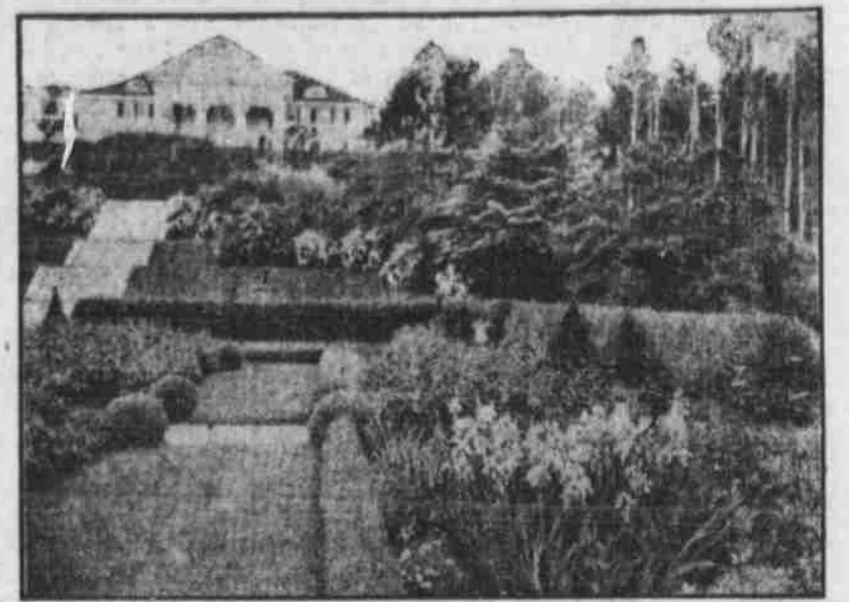
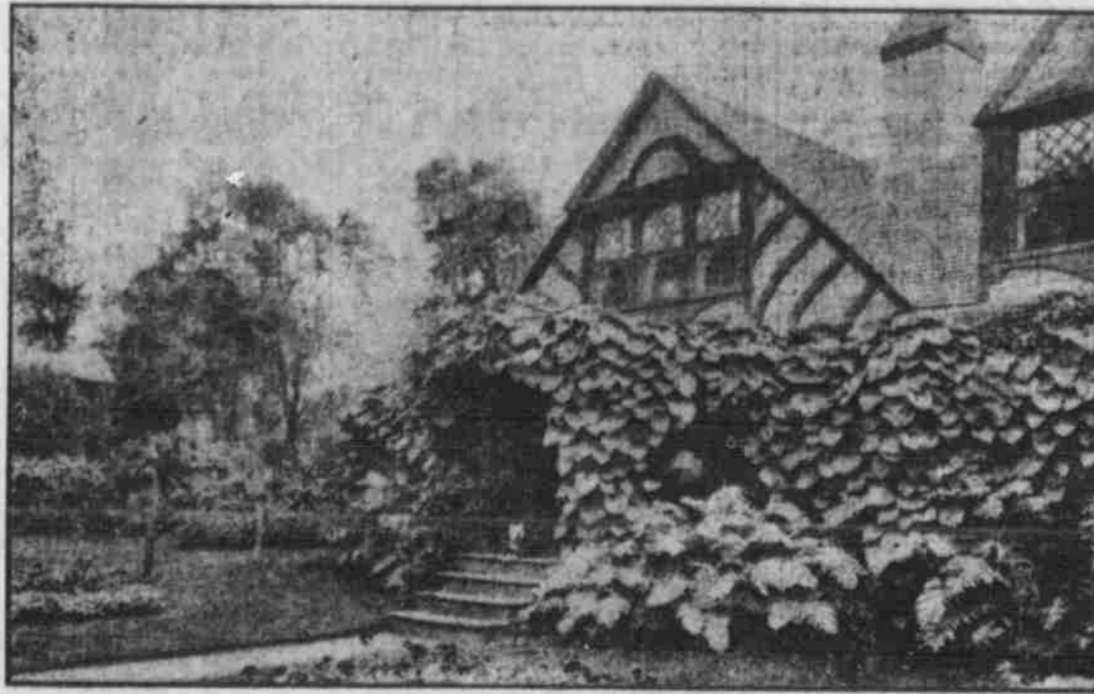
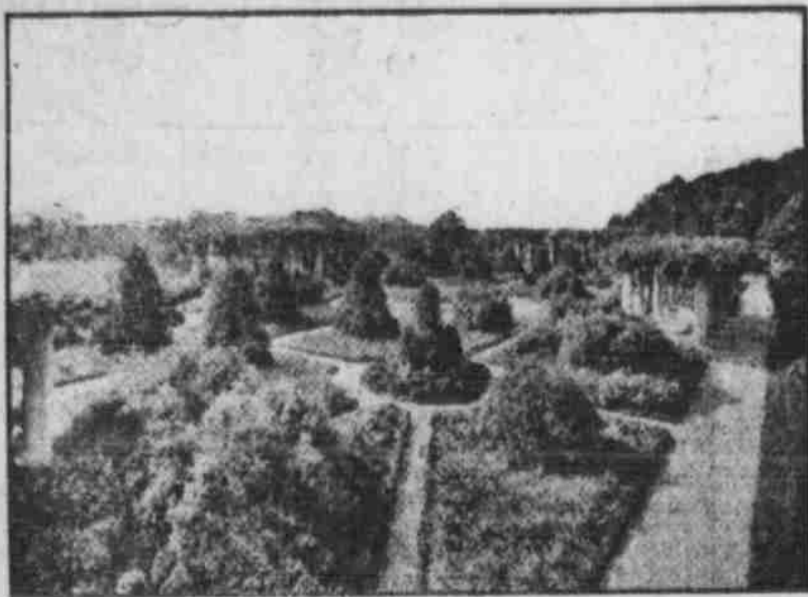


Everything for the Neighborhood Garden



Dunham Lawn Roller

These rollers are smooth on the face and rounded on outer edges to avoid cutting the lawn. Roller bearings make them 40 per cent easier to operate than the old style roller. The fact that the weight is adjustable by water for different lawn conditions is a great advantage. All prices.



"SEEDS THAT GROW"—NEED ANY?
NEBRASKA SEED CO.

1613 Howard St. Phone Douglas 1261

All Nursery Stock Must Go By May 15th

As we are obliged to vacate our sales grounds, our general line of nursery stock will be closed out at very low prices. Call and see us before buying.

J. WESTROM NURSERY
Sales Ground: **20TH and HARNEY STS.**

We Have Consolidated

The two large concerns for your benefit as well as ours. We are better able to take care of your business now than before because of a combined effort in the way of service.

SCOTT RAWITZER MFG. CO.
SUCCESSORS TO
OMAHA TENT & AWNING COMPANY
Scott Tent & Awning Co. 11th and Harney Sts.

OMAHA NURSERY

- SPECIALS FOR THIS WEEK**
- Apple Trees, each 9c
 - Apple Trees, largest size, three for \$1.00
 - Cherry Trees, each 9c
 - Early Richmond Cherry Trees, largest size—three for \$1.00
 - Peach Trees, large size, each 17c
 - Pear Trees, six kinds, largest size, each 20c
 - Current Bushes, two years old, each 25c
 - Strawberry Plants, each 1c
 - Grapes—black, white and red—each 10c
 - Blackberry and Raspberry Plants, per dozen 50c
 - Asparagus Plants, per dozen 30c
 - Roses, in variety, cut back ready for planting, each 10c
 - Carolina Poplar Trees, 6 to 8-ft., each 10c
 - Carolina Poplar Trees, 5-ft., each 5c

FRANK MARTIN
Sales Room 1519 Howard Sts.; Sales Ground 17th and Jackson Sts.
Telephone Douglas 6272. Open Evenings.

CYCLONE LAWN FENCE
is the highest grade fence on the market, heavier, stronger and closer spaced than any other—put up on wooden or iron posts, does not require an expert, is self-adjusting to uneven ground, does not lose its shape.

We carry a full line of wire and iron fences and gates for lawns, gardens and poultry yards. Trellises for vines, flower bed borders. Come in and see the line and get our low prices.

Anchor Fence Company
207 North 17th St. Phone Red 514.

Secure your garden needs from advertisers represented on this page. They are all reliable firms and handle only the best goods.

JOHN H. BATH FLORIST
307 1/2 Theater Bldg. Phone D. 2000.

Full Line of Fresh Cut Flowers and Plants.
A telephone message as good as a call. Fair treatment is not a habit—it's an institution.

ADVICE ON GARDEN MAKING

Things to Be Done in Competing for Civic League Prizes Offered.

OMAHA CITIZEN GIVES IDEAS

Would Not Attempt to Do Too Much, but Would Do the Work Well. Thereby Getting the Best Results.

Relative to the Omaha Civic league's lot improvement competition for this year, adopted for the purpose of encouraging boys and girls to go into gardening and at the same time beautifying the vacant lots in the city, a prominent citizen, in writing to The Bee, says: "If I were an Omaha boy or girl I would see that my mother and father read the preamble and rules of the league and sanctioned my entering the contest, then I would consider well the time and strength that would be needed, and if I felt a bit doubtful on the subject I would get my friends to help; next I would make out and mail the application, with a rough little sketch of my home lot just as it is today. Of course, if there were two or more lots to choose from I would pick out the one that looked the worst. If the house, fence, etc., needed painting, I would try to get my father to have them painted. When the choice was finally made and the entry blank filled out and mailed to the secretary, Roy Towl, at the City National bank building, I would examine very carefully the ground to be worked upon, and if it were hard and clayey, it might have to be plowed, and perhaps fertilized. I would get some one who has a nice garden to look at it, and advise me about this, and most certainly I would take his or her advice, then I would think well about the actual work, for I would need to decide in what way I could improve it to the very best advantage.

Starting the Grass.
"Of course, if there were no good grass, that should be almost the first thing to think of, and I would have just as much of the space in front of the house in grass as I could. Sodding is the best way to get it, but if that would cost more than I could put into it, I would seed it.
"Again, I would get advice, or if I could not get any, I would spade and rake and work the ground until it was nice and fine and without lumps. Then I would get white clover and blue grass seed and oats, to one part blue grass, one-eighth clover and one-fourth oats, and sow the mixture all over the space prepared, spreading it as evenly as possible, and raking it under lightly with great care.
"Town gardens are first and foremost a setting for a house, and its character and its position on the lot must govern the treatment of the garden. If the house stands near the street, in the middle of the lot or to one side, or if the lawn is on the north or south side of the house, as the case may be, more or less space for the garden, and more or less shade or sunlight, I will add a little suggestive plan to my letter. I would keep the center of my lawn open and plant an irregularly outlined shrubbery on its sides. I would plant the highest bushes at the back, the lower growing ones in front of these, and on the edges I would plant perennials—the old-fashioned hardy garden flowers, which live in the ground all winter, such as peonies, phlox, iris, hardy chrysanthemum, etc., and the bushes would be such a beautiful background for my flowers.

Should Trim the Trees.
"If there are trees on the place I would see if they did not need trimming, and if so, have them trimmed immediately to guide their growth and to let in light and air, and I should trim them very carefully, and as little as possible, for it is rather late and the sap is running. If there are no trees, or at best only a few

Beats Washington's Hatchet.
A Belgian writer describes an electrically driven machine for felling trees. By means of reciprocating steel wire, making 1,500 oscillations per minute, a tree one foot in diameter can be felled in two minutes.

Suggestions for Handling Garden in Early Spring

All fruit trees, bushes, hardy annuals, perennials, summer flowering roots and bulbs may be planted out of doors this month. Finish all outdoor pruning and divide and multiply all hardy perennials and prepare the beds for all tender flowers and vegetables that cannot be planted until later. Keep a book for the purpose and enter in it the date, name and location of every tree and shrub you set out for use in future years after the labels have been lost.

Balcony and Window Boxes for Flowers Beautify the Home

People occupying city houses, or houses on small lots in the suburbs, can find additional space for plants by utilizing window boxes in windows and on balconies. By supplying ample water the plants will thrive perfectly, proving a source of great pleasure to the owners and their neighbors, and greatly improve the appearance of the home. Plants for window boxes should be selected for the beauty of their foliage, as well as plants that remain in perfection a long time, carefully avoiding those that reach maturity and die in a short time. The most useful plants for window boxes are palms, ficus, aspidistra, abutilons, achyranthus, begonias, coleus, geraniums, fuschias, convolvulus, dwarf flowering cannas, asparagus, candytuft, English ivy, ivy geranium, petunias, amaranthus, centaurea, lantana, manettia, vine, pilea and vinca, all comparatively inexpensive, and many of them may be raised from seed. Window boxes of pine are easily constructed of suitable size, six to eight inches in depth, and painted a solid color or covered with oil cloth neatly tacked on to give the effect of tile. Plant boxes dry out quickly in warm weather and require a thorough watering once every day, preferably at sundown.

SPOKANE PLANS GARDEN CONTEST FOR CHILDREN

SPOKANE, Wash., April 26.—Hauling turnips, carrots, onions, rutabagas and other vegetables with play express wagons, wheelbarrows and tricycles, 6,000 Spokane school children will participate in the most unique pageant ever held in the northwest.

The vegetable parade will be the concluding event of a garden contest in which several thousand boys and girls are causing as many backyards to blossom and to produce real money. Following the parade, which will be held during the week of the June pow wow, or carnival, the horde of young gardeners will take their vegetables to the public stadium to be disposed of by auction. This is the second year of the garden contest, which is conducted by the Chamber of Commerce and the Young Men's Christian association, and every one of the thirty-three grade schools in the city has between 150 and 300 boys and girls who are cultivating garden plots. In many instances vacant lots have been secured by the children from their neighbors.

Lilies and Artificial Refrigerators.
By means of artificial refrigeration florists were able to control the flowering of Easter lilies and other plants, first holding back their growth until the Easter season, and then by artificial heat forcing them into bloom for the Easter demand.

Beats Washington's Hatchet.
A Belgian writer describes an electrically driven machine for felling trees. By means of reciprocating steel wire, making 1,500 oscillations per minute, a tree one foot in diameter can be felled in two minutes.

Suggestions for Handling Garden in Early Spring

All fruit trees, bushes, hardy annuals, perennials, summer flowering roots and bulbs may be planted out of doors this month. Finish all outdoor pruning and divide and multiply all hardy perennials and prepare the beds for all tender flowers and vegetables that cannot be planted until later. Keep a book for the purpose and enter in it the date, name and location of every tree and shrub you set out for use in future years after the labels have been lost.

In transplanting seedlings that have been grown in the houses or hotbeds select a damp, cloudy day for this operation. Allow as much earth as possible to adhere to the roots, and water carefully as soon as set out.

Keep the ground around small fruits well tilled, free from weeds and well fertilized. A coating of manure turned under in the berry patch this spring and the operation repeated next autumn will make a wonderful difference in the yield and size of the fruit. Keep seedbeds properly watered and free from weeds. If weeds are kept down during May and June less trouble will be had with them the remainder of the season.

The last of May all plants in the window garden may be set out of doors. Repeat all plants requiring it, and if wanted for flowering in the house again next winter keep them in a partially shaded position, during the summer. Pick off all buds as they appear until the plants are taken into the house. If the pots are plunged—that is, buried in the earth to their rims—the plants will get along better, but the pots should be lifted slightly and turned around occasionally to prevent the roots growing through the hole in the bottom of the pot.

Spade, that is, turn, the soil at the base of the fruit trees on the lawn, making a circle six feet in diameter, three feet out from the trunk of the tree. Use care not to bark the roots, and get the spade in as deep as possible without striking the roots. The top of the soil should first be covered with a good coating of stable manure, or prepared sheep manure, sold by seedmen, will be neater and quite as effective.

Garden Notes.
The Anchor Fence company at 206 North Seventeenth street is handling a fine line of garden fences, flower bed borders and trellises. It is agent for the celebrated Cyclone fence, which can be put up to suit any lot or condition.

The Burnett Hardware company, which recently succeeded the Dunning Hardware company, is featuring a fine line of excellent garden tools and general hardware. The slogan "anything delivered any minute" has been adopted by this progressive concern such as this is.

The M. P. Byrd Nursery company is showing a fine line of evergreens which were recently received. Mr. Byrd reports that the evergreen business this year is better than it has ever been before. Frank Martin, the nurseryman, who has been selling and planting trees in Omaha for the last fifteen years, states that there has been a record-breaking demand for nursery stock this year. Since the tornado Dr. A. Walt Steidle, the tree surgeon and landscape architect, has been busy fixing up the grounds and trees of many Omahans. Dr. Steidle states that many trees, while they did not appear to be badly damaged, were practically killed, being strained during the heavy winds.

THE POINT
We want to make is that we make
Awnings, Tents, Flags, Camp Cots and Stools, Canvas Porch Curtains, Etc.
Of top-notch quality, and that no better can be made, and this is evidenced by our phenomenal growth since 1889. Have us estimate on your work. Our prices are right. Workmanship guaranteed.
WOLF BROS. TENT & AWNING CO.
PHONE DOUGLAS 604. 1313 HOWARD ST.

Fruit Trees, Shrubs, Large Evergreens

See our sales ground at 21st and Farnam or come to the nursery at Benson.

If you are figuring on planting we will make the price right.

Apple Trees—according to size 5c to 20c
Pear Trees—standard and dwarf 10c to 25c
Cherry Trees 10c and up

Large Norway Poplars at greatly reduced prices.

BENSON-OMAHA NURSERY
Phone Benson 534-J. BENSON P. J. Flynn, Prop.

COME to Our DISPLAY GROUNDS
And see our nursery stock. It and the prices speak for themselves.
GATE CITY NURSERY CO.
J. H. MARSHALL, Mgr.
Sales Grounds, 10th and Harney. 53d and Burdette.

DR. A. WALT STEINLE
TREE SURGEON AND LANDSCAPE ARCHITECT
Main Office 718 South 16th St. Phone Douglas 7490.
Associate Editor Agricultural Southwest. Southwest Farmer.

Choice Cut Flowers
are at their best at this time of the year.

We handle only the freshest and best.

We ship flowers to any city in the United States and guarantee them to be in first class condition on reaching destination.

If you need floral designs, sprays and cut flowers of the finest quality call on us. Prompt deliveries.

HESS & SWOBODA FLORISTS
Members of the Florists Telegraph Delivery Ass'n
Greenhouse 5808 North 24th St. 1415 Farnam St.

LET BYRD Beautify Your Grounds

ORNAMENTAL SHRUBBERY. Roses, Fruit and Shade Trees.

If you are building a new home get BYRD to lay out your grounds. FRESH, HOME-GROWN STOCK.

M. P. Byrd Nursery Co.
Phone Douglas 4498. Sales Grounds 18th and Douglas Sts.
Special Prices This Week.
EVERGREENS
Colorado Blue Spruce, Norway Spruce.
Byrd is Omaha's Evergreen Specialist. Call and See Him.

Trowels 25c up to 75c.
Rakes Lawn Spring 40c up to \$1.50.
Spades and Forks 65c up to \$1.25.
Garden Hose per Foot 15c, 18c and 20c.
Dunham's Water Filling Lawn Roller \$10.
Pennsylvania Self-Sharpening Lawn Mower \$6 up to \$19.00.

"Anything Delivered Any Minute."
JUST USE THE PHONE
BURNETT HARDWARE COMPANY
1612 HARNEY STREET Successor to Dunning Hardware Co. Phone Doug. 421

Wire and Iron Fences and Gates for Lawn, Garden and Poultry Yards. Trellises for Vines and Roses. Grape Arbors. Flower Borders.

CYCLONE FENCE

Wire Arches
Summer Houses
Chairs and Settees
Tree and Flower Guards
Lawn Vases

Clothes Posts
Iron and Wire
Window Guards
Screen Door Guards
Send for Catalogue.

CHAMPION IRON & WIRE WORKS, 15th and Jackson. Tel. Doug. 1590
J. E. LEBBY, Prop.