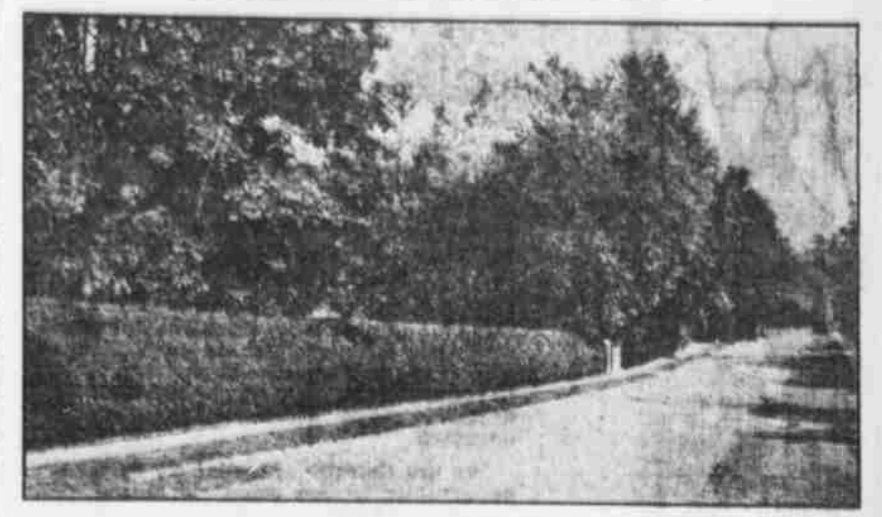


Everything for the Neighborhood Garden

Omaha Civic League's Lot Improvement Contest for 1913



This competition is instituted for two purposes:
 First—To bring about the improvement of as many Omaha homes as possible.

Second—To interest boys and girls in the work of improving the appearance of their city and to help toward its accomplishment in the most direct and simple manner.

In both purposes the stimulation of a desire in the coming generation of Omaha citizens for more healthful and attractive surroundings is clearly aimed at. There will be first, second and third prizes given for the best work in each of the four quarters of the city of Omaha.

District No. 1 includes any lot within that part of Omaha lying north of Farnam and west of Twenty-fourth streets.

District No. 2 includes any lot within that part of Omaha lying west of Twenty-fourth street and south of Farnam street.

District No. 3 includes any lot within that part of Omaha lying north of Farnam street and east of Twenty-fourth street.

District No. 4 includes any lot with that part of Omaha lying south of Farnam and east of Twenty-fourth streets.

APPLICATION TO ENTER THE OMAHA CIVIC LEAGUE'S 1913 LOT IMPROVEMENT COMPETITION.

OMAHA, Neb. 1913.
 Description of lot entered for improvement:
 Lot number
 Block number
 Addition or place
 Street and number
 Size and shape of lot
 Buildings on lot, or contemplated
 State whether fenced or not
 Present condition (state what trees, grass and shrubs are now on lot and whether it is to be graded
 A pencil sketch showing outline of lot to be improved, with measurements, may be drawn here.

The first prize in each district will be \$25, the second \$15 and the third \$10. There will be a grand prize of \$50 for the best lot in the whole city, making a total of \$75 to the winner. In judging the work and awarding the prizes the jury will take into consideration the greatest general improvement accomplished during the period of the competition, which will be from the present time until September 1, 1913. The jury will value the work in the following order, giving consideration to items as listed, which are in the order of the jury's own preference:

First—General clean-up and improvement to buildings, paint, etc.

Second—General plan of gardening, planting in groups, avoiding straight lines and geometric forms, leaving open spaces, and always considering general effect and influence on adjoining property.

Third—Area and condition of grass lawns.

Fourth—Trees, specially considered in the general effect and for hiding unsightly objects.

Fifth—Shrubs and vines.

Sixth—Temporary improvements, annuals, etc., especially when used to cover unsightly objects.

While the prizes are offered to boys and girls, the interest of parents and friends is desired, and no competitor is barred from getting all the help he or she can for whoever will help without pay. Any number may club together to improve any lot.

THE 1913 CONTEST WILL BE HELD UNDER THE FOLLOWING RULES:

1. Except in the matter of improvement to buildings and grading and sodding, no hired or paid help shall be used.
2. The committee of the Civic League having charge of this competition will advise competitors who ask for advice, but will not in any event assist with actual work. Apply to the secretary for this advice.
3. Photographs will be taken early in September of the lots showing the greatest improvement. The jury's decision will be made known as soon as practicable thereafter.
4. The applicants must be boys and girls under the age of 21 years.

This application blank is to be filled out and mailed to the secretary at the earliest possible moment.

COMMITTEE ON 1913 LOT IMPROVEMENT COMPETITION, OMAHA CIVIC LEAGUE.
 ROY N. TOWL, Secretary,
 1123 City National Bank Bldg., Omaha, Neb.

Lot Improvement Competition Committee—R. C. Peters, Chairman; Mrs. Harold Gifford, Mrs. Zachary T. Lindsey, Mrs. Lowrie Childs, George T. Morton, Thomas R. Kimball, Paul W. Kuhns, William H. Koenig, Henry Doorley, Prof. E. U. Graff and Roy N. Towl, Secretary.

ALL KINDS OF GARDEN TOOLS

PLANET JR. SINGLE WHEEL HOE, CULTIVATOR, RAKE and FLOW.



Price Complete
\$5.85

We offer these Single Wheel Hoes as the highest type of their class. They have a great variety of tools which adapt them to the various lines of gardening.

"SEEDS THAT GROW"—NEED ANY?

NEBRASKA SEED CO.

1613 Howard Street. Phone Douglas 1261.

AWNINGS



SLEEPING PORCH CURTAINS

We have several styles of curtains for sleeping porches and sun rooms. Call us and we will have our representative call. Phone D. 338. D. 882.

SCOTT-RAWITZER MFG. CO.

SUCCESSORS TO

OMAHA TENT & AWNING COMPANY

Scott Tent & Awning Co. 11th and Harney Sts.

Nursery Stock Specials for Arbor Day

We will have another car of Shade Trees, Large Shrubs and Evergreens which is due to arrive in Omaha Monday.

- Maple Trees, 2 to 2 1/2-in., each \$1.00
- Maple Trees, 1 1/2-in., each 40c
- Carolina Poplar, 2 to 2 1/2-in., each 75c
- Carolina Poplar, 1 1/2-in., each 40c
- Choice of eight varieties of 1-in. Cherries, in lots of five, ea. 32c
- All large Fruit Trees, 3 for \$1.00

FRANK R. MARTIN

1519 Howard St. Sales Ground 17th and Jackson Sts.
 Phone Douglas 6272.

Civic League Contestants

If you want the best results plant our seeds. We have all the different varieties and our prices are right. Call at our store and we will assist you in making selections.

STEWART'S SEED STORE

119 North 16th St. Opposite Postoffice. Douglas 977.

Flower Dept. Brandeis Stores

A Full Line of Bedding Plants and Seeds.

Special Prices.

FRUIT TREES SHADE TREES SHRUBS

General Nursery Stock
 We save you agent's commission. Write for Catalogue or phone Benson 554-J.

Benson-Omaha Nursery
 Benson, Neb., Box 4-N.

CYCLONE LAWN FENCE
 is the highest grade fence on the market. Heavier, stronger and closer spaced than any other—put up on wooden or iron posts; does not require an expert. Is self-adjusting to uneven ground; does not lose its shape.
 We carry a full line of Wire and Iron Fences and Gates for lawns, gardens and poultry yards. Trellises for vines. Flower bed borders. Come in and see the line and get our low prices.

Anchor Fence Company
 207 North 17th St. Phone Red 514.

JOHN H. BATH FLORIST

Boyd Theater Bldg. Phone D. 3000.

Full Line of Fresh Cut Flowers and Plants.

A telephone message as good as a call. Fair treatment is not a habit—it's an institution.

Carnations Were Grown Over Two Thousand Years Ago

Carnations, the name derived from the Latin *carnis* (flesh) in reference to the flesh color of the original types, have been in cultivation more than 2,000 years.

Theophrastus (history of plants, 300 B. C.) says: "The Greeks cultivate roses, gillyflower, violet, narciss and iris, gillyflower being the old English name for the carnation."

The sixteenth century showed a large development in the varieties of carnations. The original flesh color of the flowers was broken up into its component colors, red and white.

In the early part of the nineteenth century English gardeners exercised very great care in the growing of carnations, to mature only perfect flowers.

Carnations, like many other greenhouse plants, are started from cuttings planted in sand.

The propagation of these plants is done in the winter months as the weather is cool and the sun is never very hot.

After the cuttings take root in the sand they are put in small pots and placed in a cool house.

In the early spring they are planted in a large field where the soil has been enriched. Here they require a great deal of care and attention. The young growth and buds must be pinched back in order to give the younger plants a good, strong start before they are allowed to bloom. In the latter part of summer they are brought into the greenhouse and placed in the benches, and as soon as the plants are braced or fastened with wire supports they are allowed to bloom.

Unless given the greatest care the blossoms and foliage become infested with small red spiders and green flies which are very injurious and cause small, weak flowers.

The carnation is grown chiefly for cut-flowers, for it is not a decorative plant. After the blossoms are cut, they should be left in a cool place for a short time. See to it that there is plenty of water in the vase, for water is taken

up at every joint in the stem where the leaves are formed.

The carnation has a comparatively long season, is showy, substantial and one of the most popular flowers grown.

Garden Notes.

Mr. J. J. Hess of Hess & Swoboda, florists, returned home Monday from New York, where he attended the National Flower Show, which was held there from April 7 to 12. Mr. Hess says that the orchid display at the show this year was the finest ever shown and that many of the displays of same were from florists in England. About 1,000 florists attended the show.

The Burnett Hardware company, which recently succeeded the Dunning Hardware company, is featuring a complete line of fine garden tools. "Anything delivered any minute" is the slogan adopted by this new firm, and Mr. Burnett says that this holds good at all times.

A. C. Scott and A. H. Rawitzer have formed a partnership and have succeeded the Omaha Tent and Awning company under the firm style of Scott-Rawitzer Manufacturing company. Mr. Scott was formerly at the head of the Scott Tent and Awning company. This new firm has purchased two new auto delivery trucks, which will enable them to render the best delivery service in town.

The Gate City Nursery has its sales grounds located at Eighteenth and Harney streets, where they are showing a complete line of fine nursery stock. Mr. J. H. Marnette is manager of this concern and states that nursery stock generally is better than it has been for a number of years.

The headquarters of the National Tent and Awning Manufacturing association are now located in Omaha. Mr. A. H. Rawitzer of the Scott-Rawitzer Manufacturing company is president and Mr. W. H. Laubach of the Gate City Tent and Awning company is the recording secretary. This location of this institution in Omaha will bring much work here, such as printing and electrotyping.

The trailing nasturtiums are among the easiest annual to grow and will give a supply of flowers the whole season. Plant when danger of frost is past, or in pots or boxes and transplant in the open later.

Lily of the Valley a Flower that is Easily Cultivated

The lily of the valley is much prized for its delicate and sweet scented flowers. The plant is supposed to be the one referred to in the Sermon on the Mount, but this is not to be determined. Few plants give so much satisfaction at so little cost as the lily of the valley. It is one of the earliest spring flowers and is hardy and easily grown in shady places, also thrives in full sunshine if planted in good rich soil. The bed should be top dressed every year to get the best results.

Hundreds of thousands of crowns of lilies are especially grown in Germany for forcing. They are detached from the clumps, grown separately for two years, sorted before shipment and tied in bundles of twenty-five each. Berlin lilies are considered best for early forcing and can be had in bloom the early part of January.

In forcing, the bundles of lilies are brought in as needed, separated and planted in rows of sand, in frames where the light is excluded until the growth is about two-thirds along, then they are gradually given light.

The time from planting to the matured flower is from eighteen to twenty-four days, the time lessening as the season advances.

Many thousands of pipes are now put in cold storage where they can be kept frozen until wanted, so that lily of the valley can be had twelve months in the year instead of a few months in the spring as was the case before cold storage was devised.

Garden Wrinkles.

Do you desire a long season of lilies of the valley? Then, plant clumps on each of the four sides of the house and your desire will be gratified in a very simple fashion. Those on the south side will bloom first. The others will come along in succession as the weather warms up, those on the north side flowering last. Mignonette makes an excellent house plant. If seeds are sown in pots late in the summer.

Garden Tools

We carry a complete line of the celebrated Pennsylvania Self-Sharpener Lawn Mowers, Crack-proof and Revere Garden Hose, Dunham Water-filling Lawn Rollers, Rakes, Hoes—and all kinds of Lawn and Garden Supplies. "Anything Delivered Any Minute."

BURNETT HARDWARE CO.

1612 HARNEY ST. Formerly Dunning Hardware Co. PHONE DOUG. 421.

Wire and Iron Fences and Gates for Lawn, Garden and Poultry Yards. Trellises for Vines and Roses. Grape Arbors. Flower Borders.

Wire Arches
 Summer Houses
 Chairs and Settees
 Tree and Flower Guards
 Lawn Vases



Clothes Posts
 Iron and Wire Window Guards
 Screen Door Guards
 Send for Catalogue.

CHAMPION IRON & WIRE WORKS, 15th and Jackson. Tel. Doug. 1590
 J. L. EDDY, Prop.

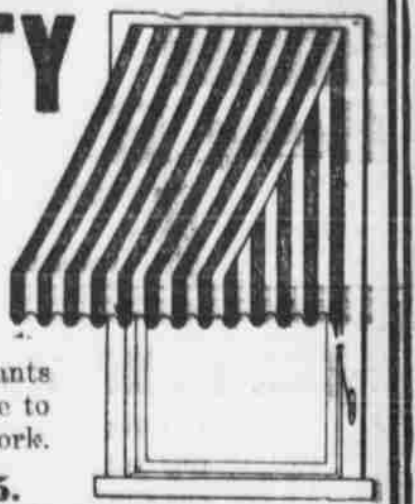
GATE CITY

Tent & Awning Co.

314-316 South 12th Street

A new Tent and Awning Company, managed by men of experience and ability capable of handling your wants in this line. Give us a chance to make an estimate on your work.

PHONE DOUGLAS 6045.



FOR ARBOR DAY PLANTING

We have a special assortment of shade and fruit trees, evergreens, small fruits, and a general line of the best nursery stock, for planting on Arbor Day. All kinds of ornamental shrubbery.

SPECIAL LOW PRICES

J. WESTROM NURSERY

Sales Ground: 20TH and HARNEY STS.

COME to Our DISPLAY GROUNDS

And see our nursery stock. It and the prices speak for themselves.

GATE CITY NURSERY CO.

J. H. MARNETTE, Mgr. Sales Grounds, 18th and Harney. 501 and Burdette.

LET BYRD Beautify Your Grounds

ORNAMENTAL SHRUBBERY. FRUIT AND SHADE TREES.

If You Are Building a New Home, Get BYRD to Lay Out Your Grounds.

FRESH, HOME-GROWN STOCK

M. P. Byrd Nursery Co.

Phone Doug. 4493. Sales Grounds 18th and Douglas Sts.

Special Prices This Week. GET BYRD TO PLANT IT.

Spring Time MEANS Planting Time

And we have just what you want in Bedding Plants to beautify your garden. Our large stock of Potted Plants offer a wide range to select from. See our display at our greenhouse at 5308 North 24th Street or at the Farnam street store.

CHOICE CUT FLOWERS

At this season of the year cut flowers are at their best. Don't forget to remember a friend, relative or sweetheart with a box of fragrant carnations, roses, sweet peas, etc. We handle only the best and freshest.

HESS & SWOBODA FLORISTS

Greenhouse 5808 North 24th St. 1415 Farnam St.

Secure your garden needs from advertisers represented on this page. They are all reliable firms and handle only the best goods.