

TO OUR STOCKHOLDERS

The Omaha Loan & Building Association is fully protected by Tornado Insurance Policies in the best companies, so no possible loss can come to the association through the recent disaster.

Omaha Loan & Building Association

Tornado Insurance Covers Blown Off Chimneys, Broken Glass. Partial as well as total loss.

50 Cents Per \$100 for Three Years

ALFRED C. KENNEDY

209 First National Bank Building Telephone Douglas 722

Tornado and Windstorm

NO BETTER COMPANIES. NO BETTER AGENTS. BIRKETT & COMPANY

421-23 Bee Bldg. Douglas 4754.

OMAHA MARBLE & TILE CO.

SLATE, TILE AND GRAVEL ROOFING REPAIRED IMMEDIATELY.

Phone Douglas 1689. 110-112 North 14th Street.

T. J. O'Brien Turns Home Into Hospital for the Injured.

T. J. O'Brien, proprietor of the Henshaw hotel, threw open his spacious west Parman street home and went out with his big auto Sunday night to bring in refugees, some of whom he knew and some not. His home has been a hospital since.

Dr. H. L. Arnold, 424 North Thirty-eighth street, had one of the prize beauty residences of the west end, and he says he will remodel it as good as before, though one outside wall is torn away. Mr. and Mrs. Arnold were in the house when the storm arose and saw it coming, but could not get out. They crouched beside a radiator and escaped injury, while part of their house blew over them.

Mrs. Frank Miller's Easter bonnet has not shown up yet. It was costly, enclosed on the box as brought from the store when the wind blew it away, leaving the box.

T. J. Fitzmorris has never succeeded in finding the white asbestos roof of his beautiful California street home. He has scoured the Walnut hill and Bemis park districts without getting a trace of it. A stray roof has been found on the Omaha university campus some miles north, but Mr. Fitzmorris thinks it is not his roof.

George M. Estrkin, 422 Parman street, does not enjoy being thumped on the head, but when it is that instead of death, he likes it. He and his family rushed to the basement when the cyclone roared up, he being last down. Just as he slumped in a slab of the plaster off the wall took him on the head and set some unpleasant thoughts to going-about what might happen, not what had happened.

J. E. Wootan of The Bee was looking over half a dozen houses three years ago with a view of buying a home. Every house he looked at then was in the path of the storm and demolished in whole or part. The one he bought at Forty-first street and Lafayette avenue escaped entirely.

George Ousley is an old colored man about 50, living with a daughter at 402 Park street. He was one of the founders of Zion Baptist church. When sold of the cyclone Monday morning he picked himself together, got his old hickory cane and footed it out to see how the old church was. He was rewarded for his walk of several miles by the sad sight of the church demolished.

Out on West Leavenworth two good-sized dwellings were lifted bodily and carried by the wind across the street and set down some 100 feet back from the curbing on vacant lots.

Key to the Situation—See Advertising.

PATRICK McENLOE TO BE BURIED FRIDAY MORNING

Patrick McEnloe, aged 35, who was injured at the home of his daughter, Mrs. Daniel Danaher, 212 North Twentieth street, during the storm Sunday night, died Tuesday at 8 p. m. at the home of another daughter, Mrs. John J. Conlon.

DISPENSARY

An experienced doctor in charge to examine and prescribe for all diseases. Free 50c paid cash medicine included. 9 to 6. Sundays 1 to 3. PUBLIC DISPENSARY. Suite 333 Bee Bldg. Omaha.

AMUSEMENTS.

“OMAHA'S FUN CENTER.”

Gaiety Daily Mat. 12-25-30-500 Evgs. 10-20-30-75c THAT SPEDDY-GET-THERE SHOW COLUMBIA Burlesques

Extravaganza and Vaudeville Little Charles Howard, Alva Lavinia, Francis Vender and a Big Beauty Chorus. This show's first visit to Omaha this season.

Ladies' Dime Matinee Today.

“Worth Climbing the Hill.”

Hippodrome Daily Mat. 10c Evgs. 5-10-20c MAX BLOOM & CO. in the TAPLOID MUSICAL COMEDY.

SUNNY SIDE OF BROADWAY “THAT'S MY HORSE!” Daily at 2:30, 7:30 and 9:00 P. M.

Orpheum Phone Douglas 494 Matinee every day 2:15. Every night 8:15

Advanced Vaudeville This Week—MONTY & HEATH, Louis Nilly, Joe Brady, Frankie Carpenter & Co., Harry DeCoe, Miss Lottie, Five Morris, Jess & Tom, Pat's Weekly Review. Prices—Mat. gallery 10c, best seats 20c, except Saturday and Sunday, Night, 10c, 20c, 30c.

Mrs. Sarah Bernhardt coming April 11.

BOYD THEATER

Tonight and All Week Matinee Wednesday and Saturday EVA LANG

Presenting the Delightful Comedy SEVEN SISTERS Next Week, March 30 “THE DAWN OF TOMORROW.”

KRUG THEATER

Matinee Today, 2:30. Tonight, 8:30 JARDIN DE PARIS GIRLS EXTRA Tonight, Wrestling Match, Two Falls Out of Three, Walt Anderson vs. Big Bill Mokuff.

EMPRESS CONTINUOUS Opera. Vaudeville Starts at 8:00. PHOTO LAYS Always Grand—There Is a Reason

BRANDEIS THEATER

Monday and Tuesday—Senix Nov. MAUDE ADAMS in “Peter Pan.”

1907 Binney street from the injuries he received.

Mr. McEnloe came to Omaha fifty-seven years ago from County Cavan, Ireland. The funeral will take place Friday at 9 a. m. from Sacred Heart church. He is survived by the two daughters mentioned.

Chamberlain's Tablets for Constipation.

For constipation, Chamberlain's Tablets are excellent. Easy to take, mild and gentle in effect. Give them a trial. For sale by all dealers.—Advertisement.

\$3,000 FOR CHARITY LAST CALL FOR MARCH

For 1362 Subscriptions The Curtis Co. will pay \$3,000 to The Invalids' Pension Association, which will insure myself and fifteen other sufferers \$10 a month each—leaving \$1,000 for advertising. Watch the personals for progress.



I MUST MAIL 62 SUBSCRIPTIONS TO

- The Ladies' Home Journal \$1.50
The Saturday Evening Post \$1.50
The Country Gentleman \$1.50
BY MARCH 29TH OR THE \$3,000 PRIZE IS LOST

ONLY FOUR DAYS LEFT PLEASE GET THEM IN

I have lain twelve years with my body dead from waist down, including the lower organs. There is neither feeling nor power of motion in the afflicted parts, nor functional knowledge or control. Yet, friendless and bedfast, unable even to sit erect, only as I support myself with my hands, I must literally support myself or perish. The situation is terrifying, for my lifeless flesh will no longer bear my weight. Yet tomorrow, were I ill or unable to provide, I would be deserted to my fate.

NOW IS THE MATTER PLAIN

I cannot live alone. Hence to insure sufficient business to pay nurse and clerical help, I will earn \$3,000 for the Invalids' Pension Association, which will insure myself and fifteen other sufferers \$10 a month each, which with the interest on the \$5,000 previously earned, will give me \$32 a month—else the I. P. A. will fail and the \$5,000 previously earned will go to the Orchee and Visiting Nurses as legally provided.

100,000 subscribe for these magazines in Iowa and Nebraska. Thousands purchase these magazines on news stands who could save \$1.10 a year. If you prefer to send your orders direct, for mercy's sake, ask the publishers to credit subscription to Agent John Gordon, Omaha. But clerks forget—better mail to me.

I must have 62 subscriptions in March; please get them in. Watch the personals for results. Your check is good. Phone Douglas 7163 today. Always address

GORDON, THE MAGAZINE MAN OMAHA, NEBRASKA

The Chicago Lumber Co. of Omaha

TELEPHONE DOUGLAS 191

LUMBER AND SHINGLES Quality and Service

Use Our Big 10-Ton Auto Truck

Call Us for RUSH ORDERS We Have the Stock.

Telephone Douglas 191

LUMBER SHINGLES

LATH, CEMENT, PLASTER, LIME

FOR REPAIR WORK

BOWMAN-KRANZ LUMBER COMPANY

Phone Harney 2854

MISSOURI RIVER LUMBER COMPANY

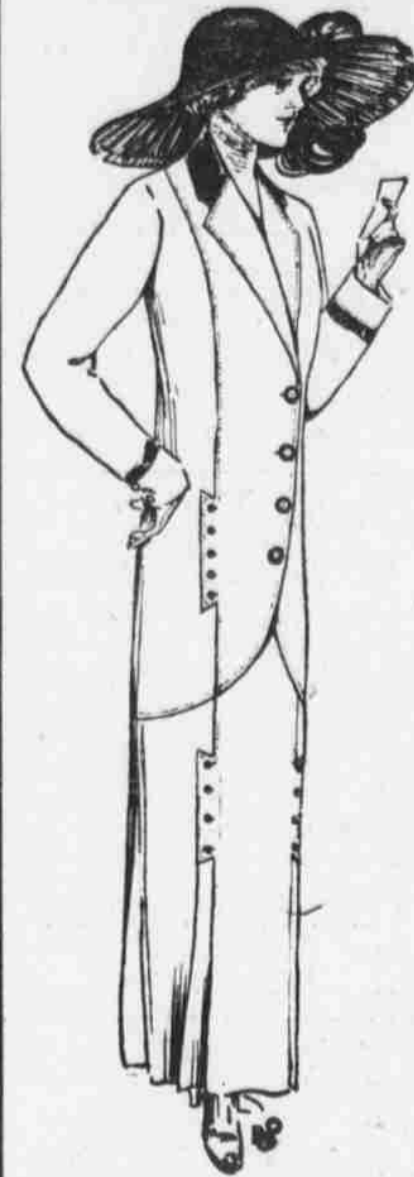
Phone Webster 803

Concentrate your advertising in The Bee. There is a Bee in almost every home.

FRIDAY'S SPECIAL OFFERINGS



Women's Cloak and Suit Dept.



"Domestic Room" Specials For Friday

- Women's New Spring Tailored Suits, blacks, tans and grays, good styles, values \$9.75 to \$15.00
Women's New Spring Coats, good assortment sizes and colors, values to \$12.50
Children's Dresses, ages 6 to 14 years, good styles and colors, values to \$1.00, at 50c
Women's black and gingham Petticoats, values to 79c, choice 50c
Women's Percalé House Dresses, well made, good styles, values to \$1.00, at 69c
Percalé Dressing Saques, all colors and sizes, well made, 50c vals. 39c

Remnants of Wash Goods and Seasonable Merchandise from the Bolt at Special Prices; Domestic Room, Friday

- Remnants 26-inch bleached muslin, 8 1/2 c values 6c
Remnants of plisse or searucker crepes, good colors, 18c values, at 12 1/2 c
Remnants of Poplins, good colors, 19c values 12 1/2 c
Remnants of Gingham Apron Checks, 7c values 5c
Remnants of Wash Goods, an odd lot, worth 15c 5c
Remnants 36-inch Percalés, 12 1/2 c values 7 1/2 c
Remnants of Dress Gingham, 12 1/2 c values 8 1/2 c
Made Bed Sheets, 81x90, 50c values 39c
Made Pillow Cases, 42x36, 12 1/2 c values 10c
Prints, "Simpson's" perfect goods, 6 1/2 c values 5 1/2 c
Cotton Challis, good patterns, 12 1/2 c values 10c
Poplins or Voiles, fancy silk stripes, good colors, 25c values 19c

Special Silk Values Friday

2,000 yards of all silk foulards in pretty new spring styles, 10 different designs to choose from, 35c values, at 45c
25 pieces of 27 and 36-inch tub wash silks, in cream grounds with fancy stripes, 75c values, Friday at 45c
27-inch all silk messaline and novelty silks, all silk serges, both plain and fancy, \$1.00 values, Friday at 65c
10 pieces of yard wide black dress taffetas, soft chiffon finish, 80c values, Friday at 55c
15 pieces yard wide black messaline and satin fancy, \$1.00 values, Friday at 65c
75 pieces of 36-inch novelty silk in dots, stripes and checks, also a full line of plain all silk messaline, \$1.25 values, Friday at 95c

Dress Goods Bargains for Friday

25 pieces of Serges, Panamas and novelty checked materials, 59c values, Friday at 38c
25 pieces of new Wool Ratines in fancy mixtures, every new spring color, 75c values, Friday at 45c
75 pieces of all wool serges and diagonals in a full line of colors, at 80c and 85c
20 pieces of all wool cream serges, also cream with hair line stripes, \$1.00, Friday, at 75c
20 pieces of 54-inch all wool serges, fine, firm quality, new spring colors, \$1.25 values, Friday at 95c

The Big Six Notion Specials

Friday in the Domestic Room.
5c safety pins, 3 cards for 5c
200 yds. sewing thread, 3 spools for 5c
5c fish-eye pearl buttons, per card 2 1/2 c
5c darning needles, card 2 1/2 c
20c silk hair bow ribbon, per yard 10c
20c embroidery, per yd. 10c

Men's, Women's and Children's Furnishings Goods DOMESTIC FRIDAY

Men's Undershirts and Drawers, worth up to 75c, at 35c and 25c
Men's Union Suits, worth up to \$2, at 95c, 85c and 75c
Women's and Children's Vests and Suits, worth to 75c, at 35c, 50c
Women's and Children's Vests and Drawers, worth to 75c, 25c, 15c
Men's and Boys' Negligee Shirts and Suits, worth to 75c, at 35c
Men's, Women's and Children's Hose and Socks, worth 20c, pair, at 12 1/2 c and 6 1/2 c

Friday We Offer the Following Specials in Pure Foods at Prices That Are Money Savers

- 22 lbs. best granulated sugar \$1.00
10 lbs. best white or yellow cornmeal 77 1/2 c
10 lbs. best rolled breakfast oatmeal 77 1/2 c
12 lbs. good cooking apples 35c
6 lbs. best hand picked navy beans for 25c
5 lbs. fancy Japan rice 25c
1 gallon cans Golden table syrup 35c
The best domestic macaroni, vermicelli or spaghetti, pkg. 7 1/2 c
2-lb. cans fancy sweet sugar corn 35c
2-lb. cans wax string, green or lima beans 71 1/2 c
2-lb. cans baked beans, rhubarb, squash or pumpkin 71 1/2 c
1/2-gal. cans condensed milk, cov. 71 1/2 c
E. C. corn flakes, pkg. 45c
1-lb. pkg. cornstarch 45c
The best soda of oyster crackers, lb. at 61 1/2 c
10 bars Best 'Em All Diamond or Lenox soap 25c
Choice California Prunes, lb. 50c
3 Crown Muscatel raisins, lb. 71 1/2 c
Choice California peaches, lb. 71 1/2 c
The best Tea Siftings, lb. 10c
Golden Santos Coffee, lb. 25c
Best bulk peanut butter 13 1/2 c
Peter's Breakfast Cocoa, lb. 25c
The Vegetable Market for the Fr.—1c
15 lbs. Colorado potatoes 15c
12 lbs. good cooking apples 35c
Large bunches fresh beets, carrots, turnips, radishes or shallots, bunch at 40c
New potatoes, lb. 7 1/2 c
15 lbs. best red onions 15c
Fresh Spinach, per peck 71 1/2 c
Fresh cabbage, per lb. 15c
Fresh rhubarb bunch 15c
Fresh ripe tomatoes, lb. 10c
Fresh green beans, lb. 20c
Fresh asparagus, lb. 20c
Fresh cauliflower, lb. 35c
2 heads fresh leaf lettuce 50c
The best dairy butter, lb. 25c
Large head lettuce 15c
Fancy cucumbers, each 15c, 12 1/2 c, 10c
Eggs, Butter and Cheese Prices.
The best strictly fresh eggs, doz. 18c
The best creamery butter, carton or bulk, lb. 25c
The best country creamery butter, lb. 30c
The best dairy butter, lb. 25c
Good table butter, lb. 25c
Full cream cheese, lb. 18c

On Account of the Tornado Our Pure Food Exhibit Has Been Postponed Until Further Notice.

Try Hayden's First

You Will Miss Something if You Fail to Read the Want Ad Section today