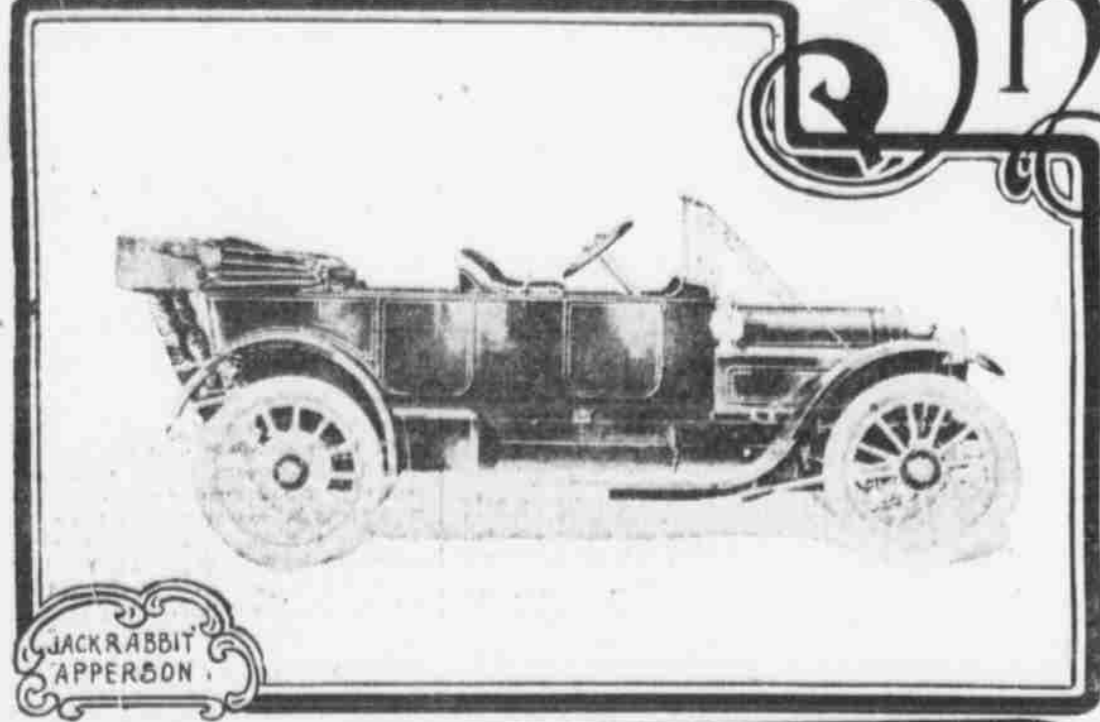
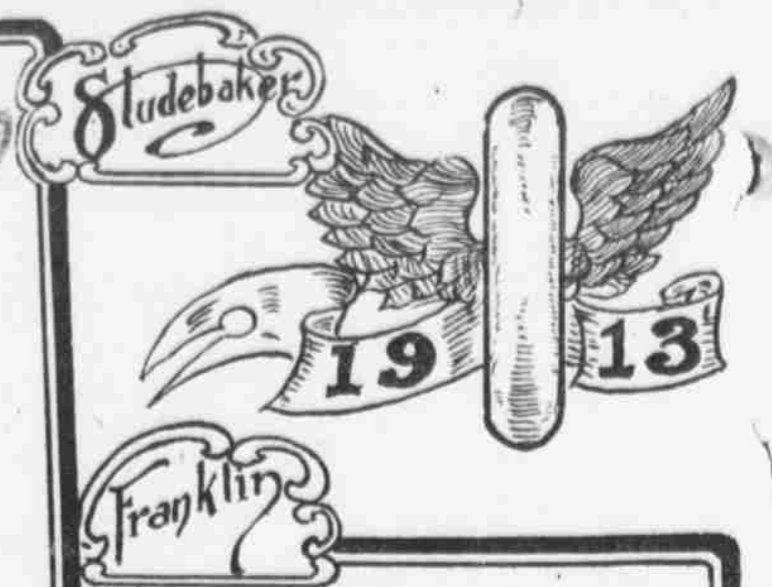
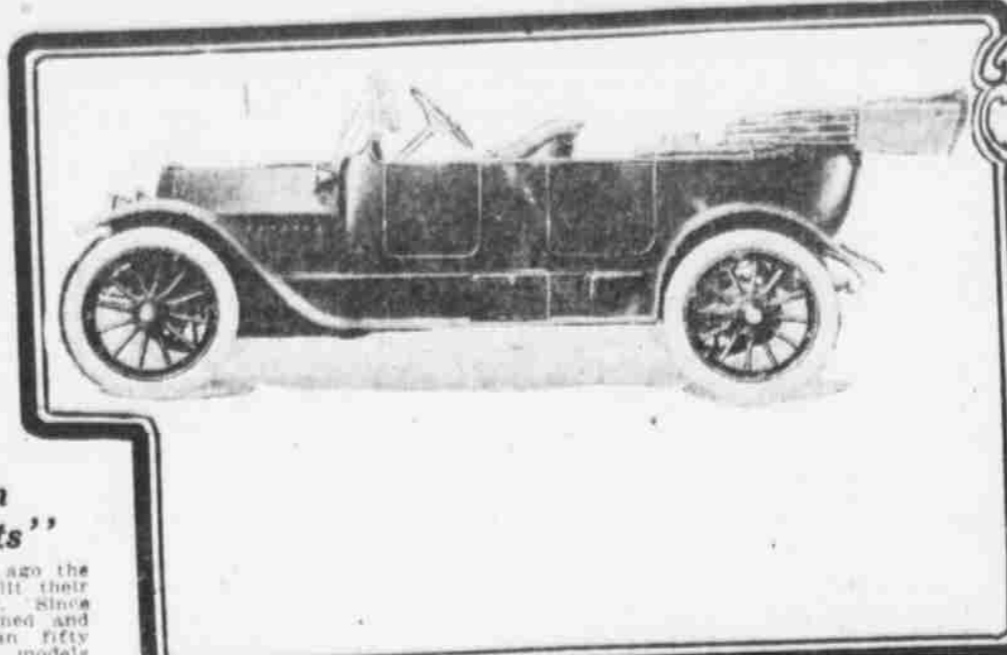


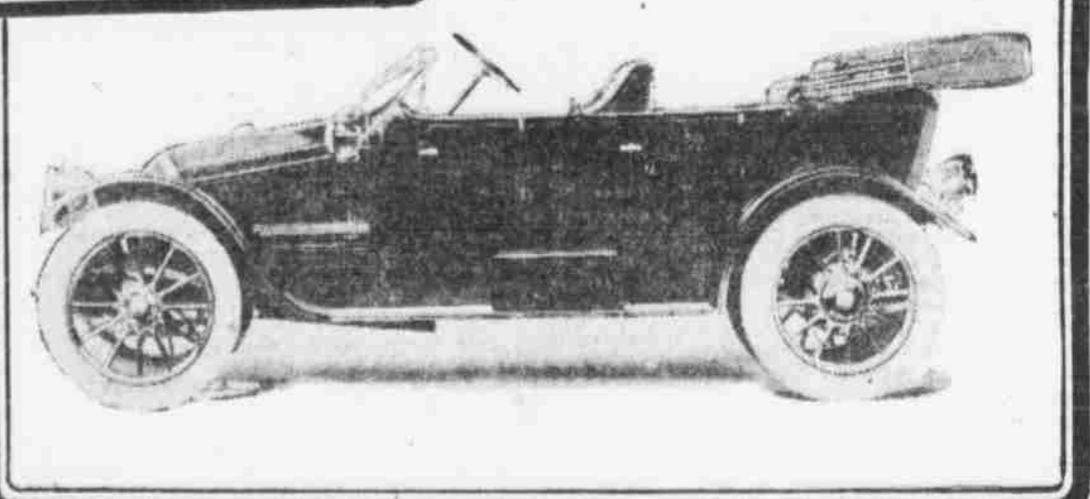
Cars worth seeing at the Show



**Apperson
"Jackrabbits"**

One score of years ago the Apperson Brothers built their first gasoline buggy. Since then they have designed and constructed more than fifty different and distinct models of motor cars. Each and every model has been an improvement over its predecessor, until this year the Twentieth Anniversary Models are the very highest product it is possible to secure.

**Apperson Jackrabbit Auto Co.,
1206 Farnam Street.**



Buick Automobiles

A Buick automobile must be so built that it will, at all times and under all circumstances, give the owner uninterrupted use of his investment. No matter what its price, a Buick car must, and will, give the maximum of that service for which it was intended, and must bear its proportion of the responsibility of maintaining that high prestige which Buick cars have attained.

**Nebraska Buick Auto Co.,
1914 Farnam Street.**

Hupmobile "32"

A striking example of straight line symmetry, the four-passenger 22-horsepower model has power to spare for hill climbing and rough going in country driving; for congested city travel, a flexible throttle of from four to fifty miles an hour. Its low center of gravity, perfect balance, comfortably tilted seats, special rear axle construction and springs, make it wonderfully easy riding. Priced at \$275 and fully equipped.

A long-looked for car of moderate price that will hold the whole family is the six-passenger "32" Touring Car. Its added carrying burden is well within the power and capabilities of the long-stroke 2 1/2 x 3 1/2-inch motor.

**W. L. Huffman Automobile Co.,
1814-16 Farnam Street**

Velie

The most noticeable advancement for 1913 season in the Velie car is the adoption of the Gray and Davis electric self-starting mechanism. It differs in two important respects from other electric starters in that the generator and the motor are separate units, each designed for its particular requirements. Left hand drive with center control has been adopted as the only satisfactory solution of the driving problem with the present vestibuled cars.

**John Deere Plow Co.,
10th and Howard Sts.**

Jackson "Sultanic" Six

55 horse-power, unit power plant, six cylinder, long stroke motor, 4 1/2 x 7 1/2 inches, 12 1/2-inch wheels, tires. Full elliptic springs, front and rear. Deep roomy body with 18-inch upholstery. Gasoline tank under dash supplied from storage tank at rear, with pressure pump. Total capacity, twenty gallons. Electric starter, electric dynamo and lighting system, mohair top, top bow, ventilating wind-shield, speedometer, oil and gasoline gauges on dash, demountable wheels, extra wheel, wheel carrier, robe rail, foot rest, pump, jack, fire outfit and tools. Trimmings, black and nickel. The perfection of motor cars and the price only \$2,500.

**Pioneer Implement Co.,
Council Bluffs, Iowa.**

Studebaker "35"

In considering the Studebaker "35" notice first that this is a six-passenger car, with two seats of the disappearing, collapsible type. The body is long and handsome, the upholstery rich, and the cushions so deep and comfortable that it seems incredible that they can be placed on a \$1,250 car.

The Wagner electric self-starter is simple in operation, has nothing to get out of order, and will turn the motor 30 revolutions per minute for 31 minutes. For power there is a long stroke full 35 horsepower motor.

**E. R. Wilson Automobile Co.,
2010-12-14 Harney Street.**

Franklin Motor Cars

These are the advantages Franklin owners have over owners of other cars. Equipped with electric starting and lighting system. Average of 400 miles per gallon of oil with no smoke. Travels 20% to 25% farther per gallon of gasoline than any other car of the same size. No freezing, no overheating troubles. Freedom from cooling difficulties every day in the year. Average of 8,000 to 10,000 miles per set of tires. Rides the easiest—affording real comfort on tours of 200 to 300 miles per day. Last the longest, giving 5 1/2 years of service to owners.

**Guy L. Smith,
2205-7 Farnam Street.**

Locomobile

Importations of foreign cars, at one time extensive, have dwindled almost to nothing, owing to the high development of the leading American cars. Of the four makes principally contributing to this change, the Locomobile has always had the highest reputation for reliability. Its strength and safety have ranked it as the "Best Built Car in America."

**Drummond Motor Co.,
26th and Farnam Streets.**

Regal Underslung

See the Regal car with its much talked of safety underslung construction. Into the design, workmanship and materials, the builders have concentrated all past experience, in addition to the improvements which by every "down to the minute" test and the best engineering practice have proved desirable.

When this car is compared, inch by inch, there will be discovered a value at \$550 which will affirm immediately the assertion that the new Regal Model "T" is "the car of the year."

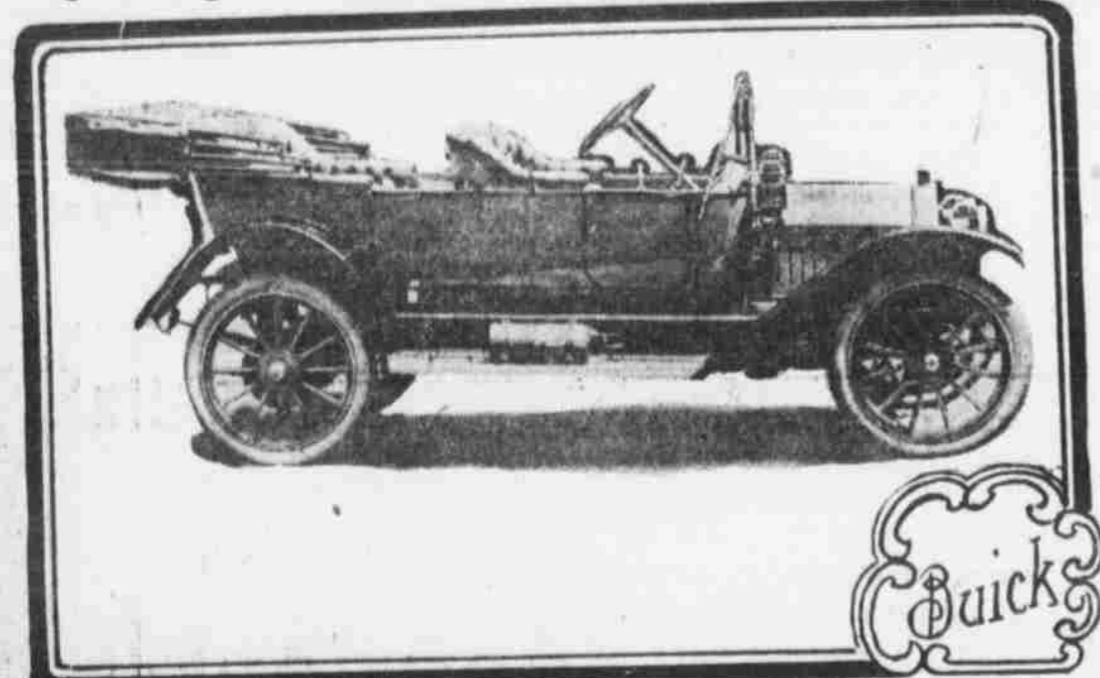
**The T. G. Northwall Co.,
914 Jones Street.**

New Hudson "37"

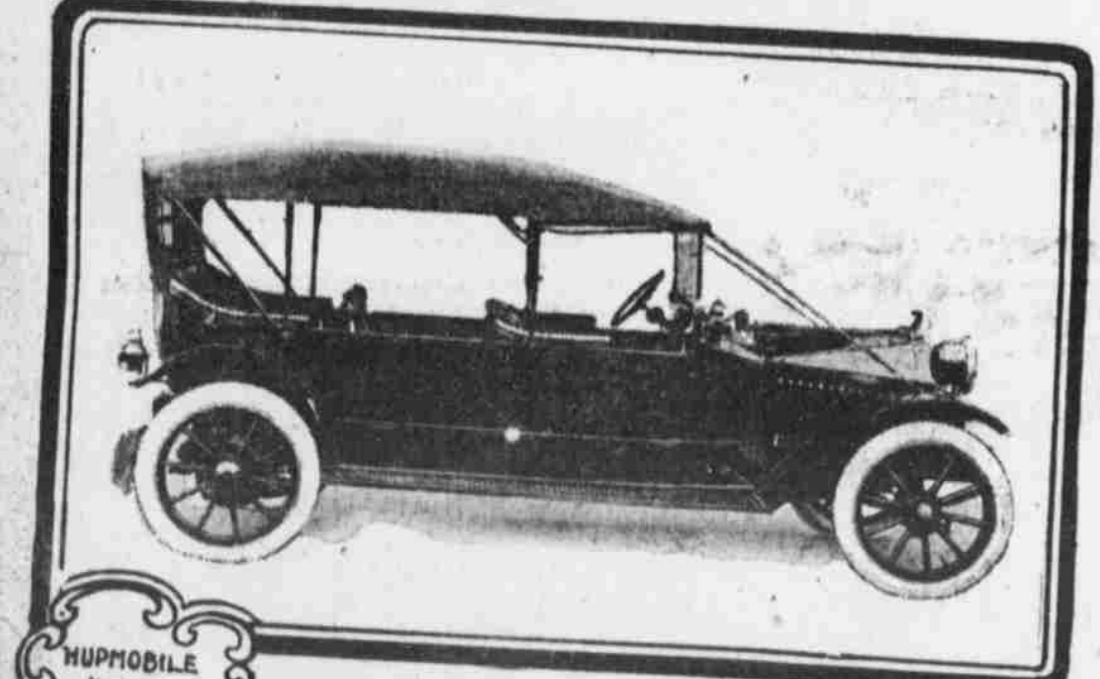
Electric self-starting and electric lights. You need know nothing about an automobile to appreciate the luxury and comfort of the HUDSON "37". You never sat in a more comfortable seat. You never rested on easier, softer cushions. They are 12 inches deep—Turkish type. The highest development of automobile building is expressed in this car.

You start the car from the seat. It is operated electrically by touching an electric button and pressing the clutch pedal. In short all the convenience, reliability and perfection known to the automobile world is embodied in this \$1,875 car.

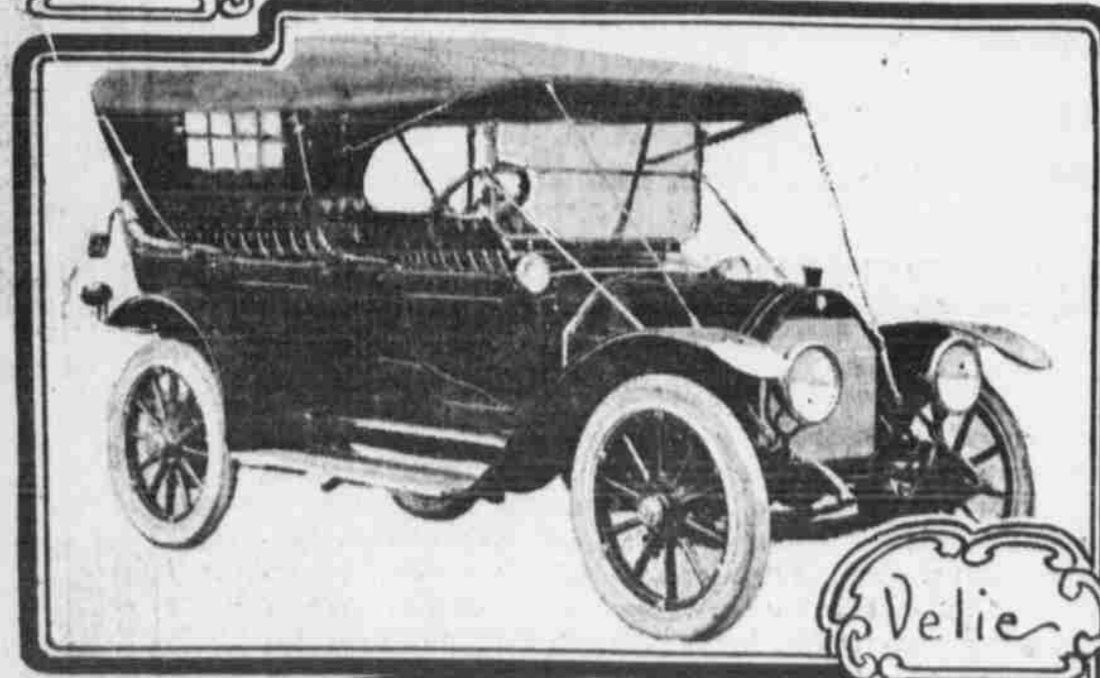
**Guy L. Smith,
2205-5 Farnam Street.**



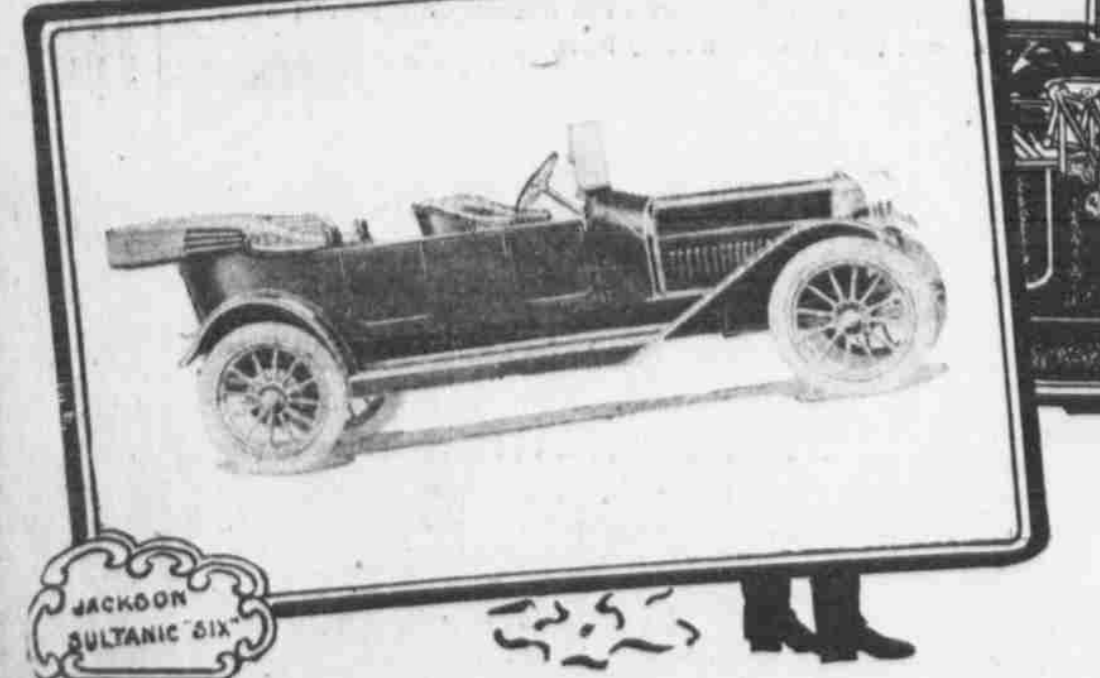
Buick



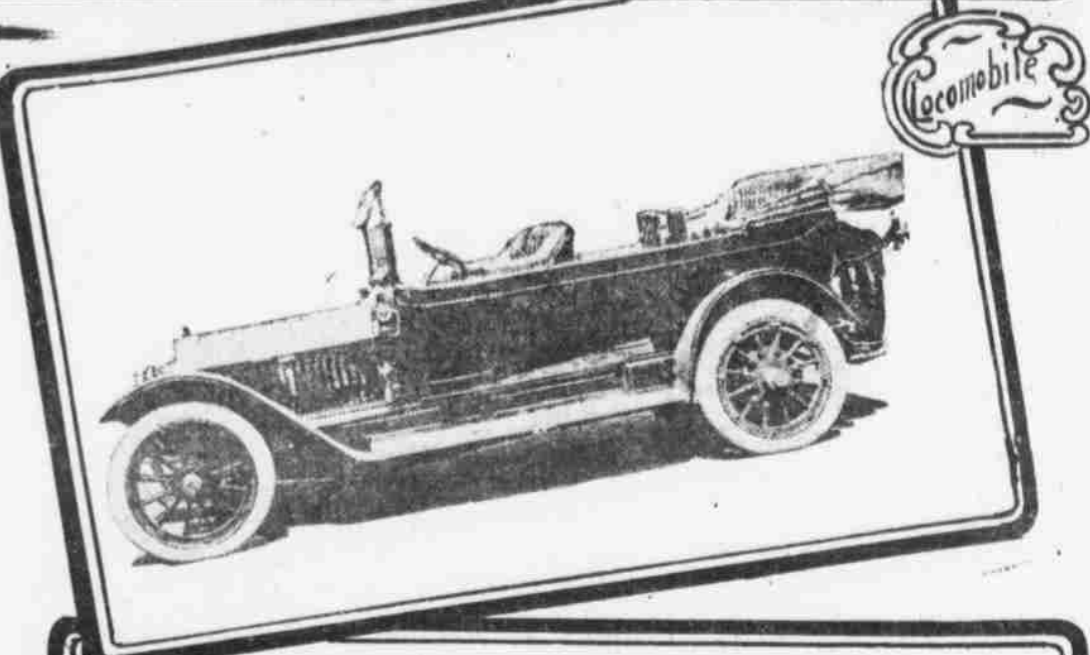
**HUPMOBILE
"32"**



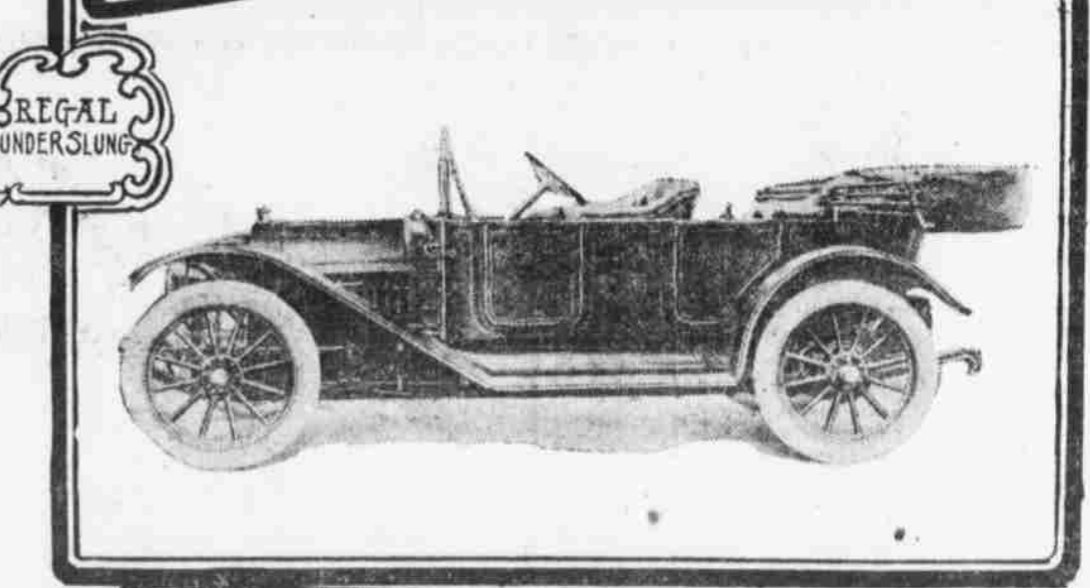
Velie



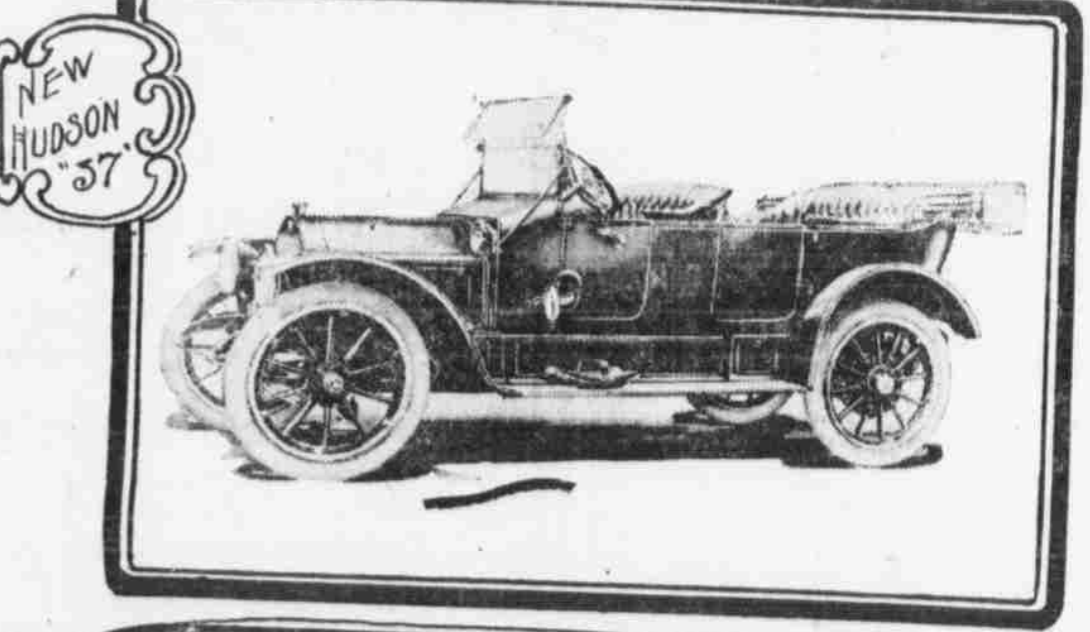
**JACKSON
SULTANIC SIX**



Locomobile



**REGAL
UNDERSLUNG**



**NEW
HUDSON
"37"**

