

MAKE SMOKERS BUILD ROADS

By Placing Small Tax on Tobacco Highways Could Be Improved.

WOULD PROVIDE MILLIONS

By Restoring Tax of 1870 on Tobacco the Yearly Income Would Amount to Over Eighty Million Dollars.

National roads as an exact form in which the government should participate in highway construction is a belief which is becoming countrywide in its acceptance.

Mr. Warburton proposes to make the tobacco users of the country pay for the building of these national highways through the imposition of a tax so small that the smokers will go right on smoking as usual without consciousness of the great benefit they are bestowing upon the people of this country.

The scheme contemplates trunk lines connecting the capitals of all states with the national capital and with one another and also with the principal national parks, the government to locate the lines between the capitals along the most feasible routes, with the states granting to the government the selected roadways, with the improvements thereon.

Would Provide Eighty Million Year.

In this announcement Representative Warburton is quoted as saying: "I propose to raise the fund by restoring the internal revenue tax of 1870 on tobacco and set aside the additional income from this source as a national road fund. The additional tax thus provided would amount to about \$80,000,000 a year, a little more than double the present internal revenue tax on tobacco. If the proposed \$3,000-mile road system should cost \$20,000 a mile it would be paid for in about four years and in about five years at a cost of \$20,000 a mile.

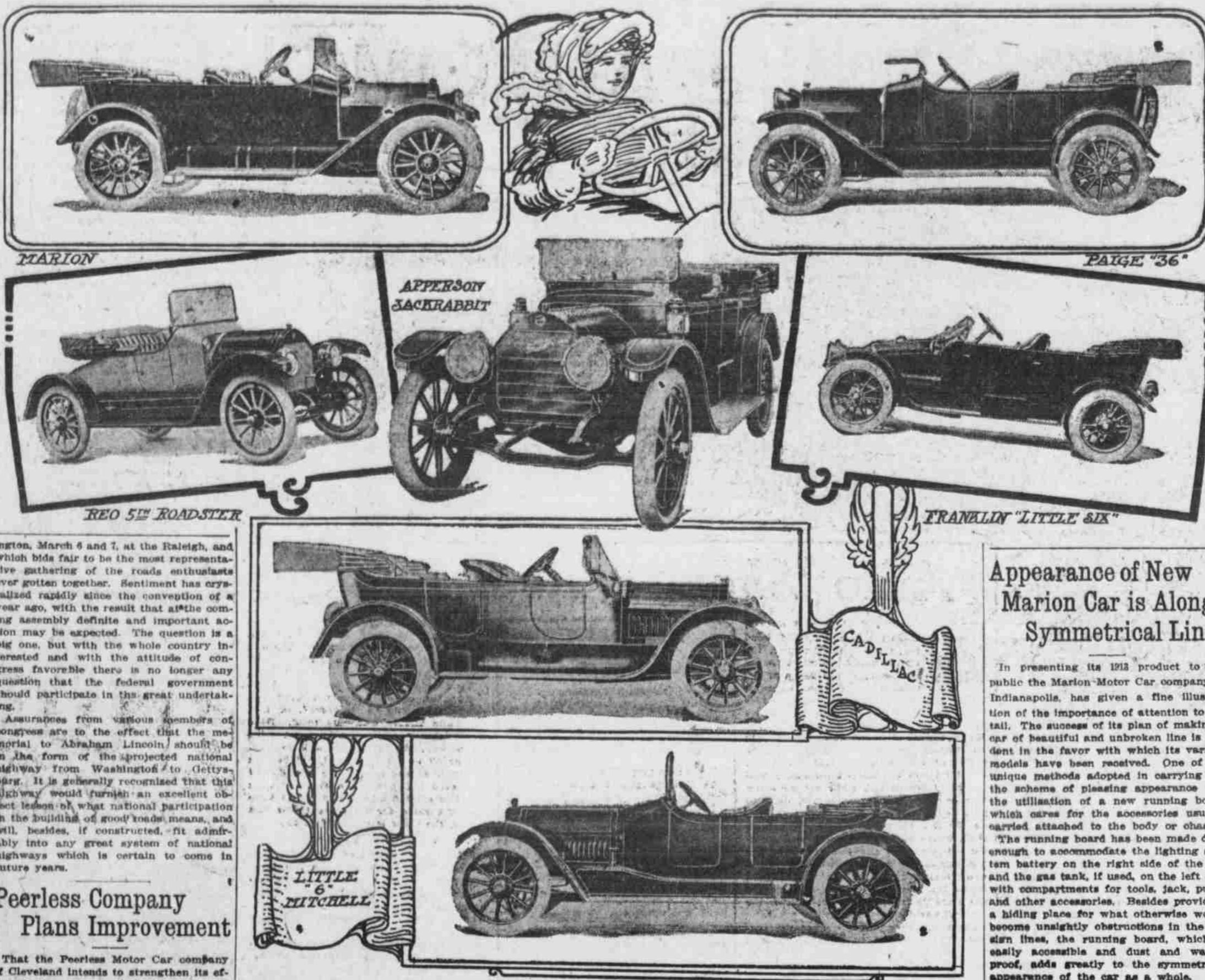
"In 1910, according to the reports of the internal revenue bureau, the receipts from the tobacco tax were \$55,000,000, as opposed to \$125,000,000 had the law of 1870 been enforced. While the proposed increased tax on tobacco might seem heavy, as a matter of fact it will not be noticed by the consumer. For instance, it would raise the tax on a 10-cent cigar 3-10 of a cent and the manufacturer of that cigar would decrease the weight of the package one-thirtieth and the consumer could not tell the difference in price. The manufacturer of smoking tobacco would decrease the size of the package about one-twelfth and the consumer would not know the difference.

"In the Spanish-American war the tax on tobacco was increased to the amount of tax suggested, and I venture to say not one consumer out of a dozen ever knew the tax was raised and never knew when it was taken off.

"The proposed raise in the tax will not affect the producer of tobacco, for one-half of our tobacco is exported. England imports one-half of her tobacco from us; France one-half; Italy nearly all of hers. The price is regulated by the foreign market, much more than is the price of wheat and corn, and is not affected by the tax."

Mr. Warburton will be included in the list of speakers of the second Federal Aid convention called by the American Automobile association to take place in Wash-

Leading Cars to Be Seen at the Auto Show This Week



ington, March 5 and 7, at the Raleigh, and which bids fair to be the most representative gathering of the roads enthusiasts ever gotten together. Sentiment has crystallized rapidly since the convention of a year ago, with the result that at the coming assembly definite and important action may be expected. The question is a big one, but with the whole country interested and with the attitude of congress favorable there is no longer any question that the federal government should participate in the great undertaking.

Peerless Company Plans Improvement

That the Peerless Motor Car company of Cleveland intends to strengthen its efforts in the motor truck field is evidenced by its recent fiscal transactions.

President Kittredge of the Peerless Motor Car company in a recent interview stated that since early last fall the Peerless company has been making extensive preparations to make 1913, in every way, its banner year. Favored from the

first with unusually capable officials and board of directors, by wise and conservative management, this concern has become a well knit organization with an increasingly large market for its high grade output.

At recent meetings of the stockholders and directors of the Peerless Motor Car company of Cleveland, O., proper action was taken to increase the capital stock of the company to \$10,000,000, of which \$4,200,000 is paid in.

APPEAL TO WOMEN BUYERS

Manufacturers See Need of Getting Up Creations for Gentler Sex.

ADVANTAGE OF SELF-STARTER

Is Greatest Single Achievement in Automobile Construction for Woman's Benefit in Running Gasoline Car.

Recognizing that cars which appeal to the woman not only mean added sales but greatly increased popularity, motor car builders have left nothing undone to clinch the approval of woman buyers. That feminine taste would dominate certain phases of design was recognized years ago, but the season of 1913 has produced a new set of conditions where those makers who would hold feminine favor were obliged to go beyond the details of interior treatment for women who merely buy and provide greater convenience and comfort for women who drive.

Undoubtedly the greatest single achievement aiding women motorists has been the perfection of the self-starting system in conjunction with the left side drive and center control. Without these features a motoring trip unaided by man was almost sure to result in work that was not only difficult but undignified. Now, however, the woman motorist may stop and start as often as she likes without manual work. She may, for example, merely close a simple switch on the dash and the motor is started by an efficient and simple electric motor generator. In addition, current is supplied for the electric lights, making it unnecessary for the driver to leave the seat.

Dependable starting is not the only feature which manufacturers are giving greater attention. The exhibit shows that manufacturers are not only meeting requirements as they are made known, but they are anticipating many more needs that were formerly overlooked in the effort to accomplish the big things.

Another point showing a study of woman's needs while motoring is the simplicity of adjusting the folding seats in enclosed cars. This careful attention to small details reflects the infinite care given to things of greater importance.

ANOTHER BIG DONATION TO HIGHWAY MOVEMENT

INDIANAPOLIS, Ind., Feb. 21.—Through its president, R. D. Chapin, the Hudson Motor Car company of Detroit, Mich., has pledged its support to the Ocean-to-Ocean highway movement by making a subscription of \$100,000 to the fund now being raised by the automobile and accessory manufacturers and dealers of the United States for the purchase of materials for the rock highway which is to span the continent from New York to San Francisco. This contribution of the Hudson Motor Car company is based upon 1 per cent of the gross earnings of the company for one year, and brings the total fund considerably over the \$2,000,000 mark.

Appearance of New Marion Car is Along Symmetrical Lines

In presenting its 1913 product to the public the Marion-Motor Car company of Indianapolis, has given a fine illustration of the importance of attention to detail. The success of its plan of making a car of beautiful and unbroken line is evident in the favor with which its various models have been received. One of the unique methods adopted in carrying out the scheme of pleasing appearance was the utilization of a new running board which carries for the accessories usually carried attached to the body or chassis. The running board has been made deep enough to accommodate the lighting system battery on the right side of the car and the gas tank, if used, on the left side with compartments for tools, jack, pump and other accessories. Besides providing a hiding place for what otherwise would become unsightly obstructions in the design lines, the running board, which is easily accessible and dust and waterproof, adds greatly to the symmetrical appearance of the car as a whole.

ANNOUNCEMENT!

We have just made arrangements with the Midland Motor Co., of East Moline, Ill., to retain the exclusive agency rights in this territory for their famous line of cars during 1913. Although Midland Automobiles have been a great success for 8 years, this year promises to be the banner one.

With the latest improvements for convenience and its many special features which make it the superior car of its class, the Midland was the most admired car at the big Chicago Show and will be the big attraction at the Omaha Exhibit.

See the Midland at the Auditorium BOOTH 27

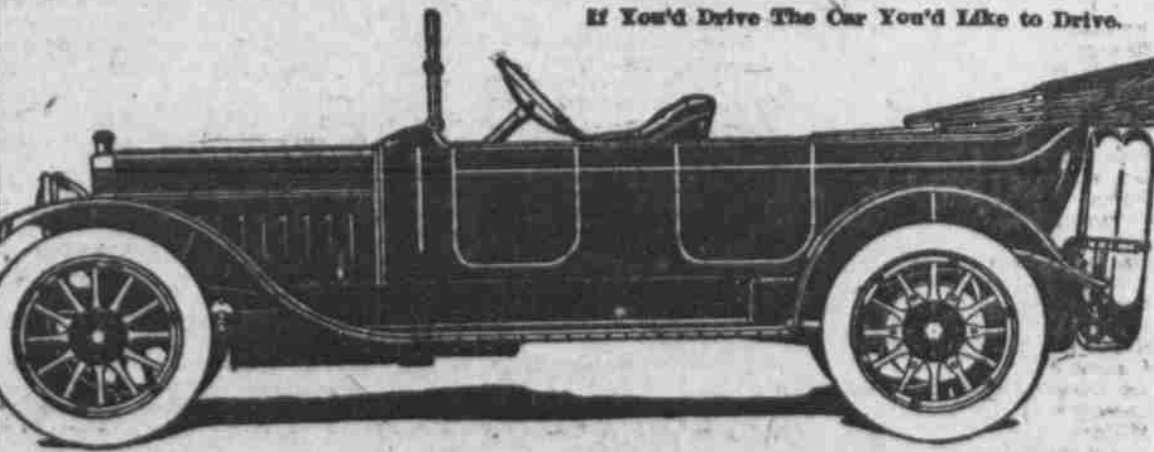
Compare it, point by point, with all other cars in its class and you will be surprised at the exceptional value of the Midland. Note the low, rakish, graceful lines in the 1913 Midland. Mark the trim, clean-cut appearance, how the dash lights are hidden, how the extra tires are carried in the rear, how everything is constructed to make this an admired car.

The power parts are built with the same care and thoughtfulness for economy, speed and ease of operation. Read over the specifications then see the car itself at the show.

Midland Instantaneous Service

A new idea in Motordom. A service that eliminates delays, that furnishes you assistance when and where you need it. Let us explain.

Table with specifications for Model T (4-40, 5-Pass., \$1,685) and Model T (6-50, 5-Pass., \$2,385). Includes details on wheel base, motor, ignition, starter, lighting, suspension, steering, clutch, rear axle, front axle, wheels, tires, springs, brakes, body, and color.



FREELAND AUTOMOBILE CO. TELEPHONE DOUGLAS 2282. 1124 FARNAM STREET

Rambler Motor Cars

Five features of the U. S. L. starting and lighting system used on the Cross Country will bring owners of other cars, dealers and careful buyers to the Cross Country exhibit.

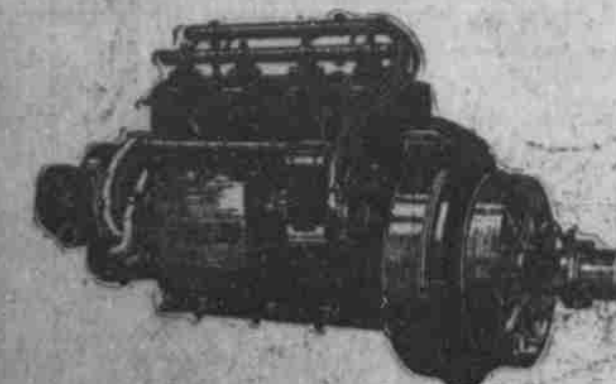
First—The motor generator is an integral part of the engine—not an extra moving part is added.

Second—It operates silently, starting the car without jerk or jar.

Third—It turns the engine over at three hundred revolutions per minute—this because of the direct application of the power.

Fourth—There are no additional bearings, chains, sprockets, gears or belts.

Fifth—The parts are larger and more substantial than those of any other starting and lighting device. The greater number of brushes and the greater size of the commutator provide better wearing qualities and greater power capacity.



The Cross Country motor connected with the U. S. L. motor generator makes a compact and simple unit. Electrical parts enclosed and protected. The armature is bolted to the crank shaft and rotates with it, acting as a fly-wheel. The other parts, mostly of aluminum, are bolted to the crank-case.

See the new Cross Country at Space 7, the Auditorium.

Rambler Motor Company 2082-2054 Farnam Street, Omaha, Neb.