

OFFERED FOR RENT. Apartments and Flats.

OFFERED FOR RENT. Apartments and Flats.

OFFERED FOR RENT. Houses and Cottages.

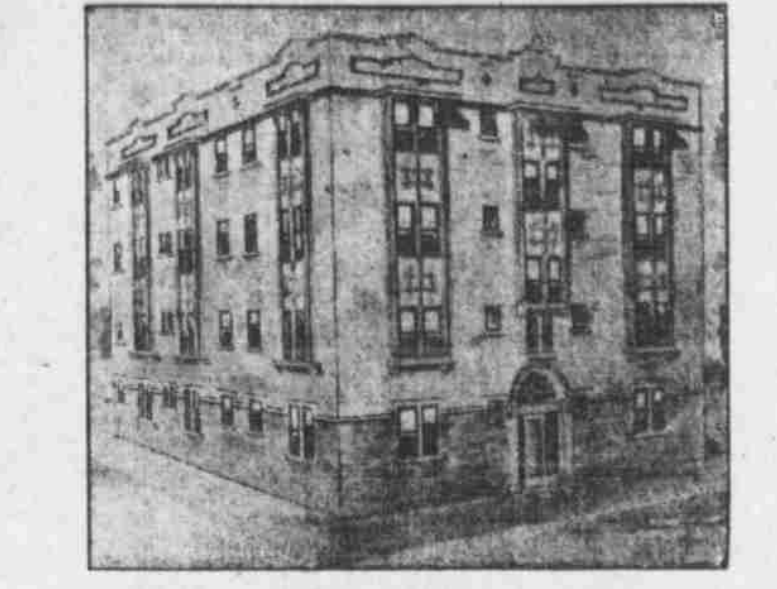
OFFERED FOR RENT. Houses and Cottages.

OFFERED FOR RENT. Houses and Cottages.

REAL ESTATE. FARM & RANCH LANDS FOR SALE.

REAL ESTATE WANTED. Are You the Owner of Either of These?

Furnished Apartments in "The Traverton" Fireproof 24th St. and Langdon Court



These beautiful apartments have been rented for more rapidly than was expected and there are but a very few left. Everything possible has been done to secure the comfort of our tenants.

Entrance to "The Traverton" is of marble, the floors and marble base in corridors and bath rooms.

105 Omaha National Bank Building. Phone Red 4721. Sunday, Web. 4835.

TRAVER BROS.

105 Omaha National Bank Building. Phone Red 4721. Sunday, Web. 4835.

DETACHED HOUSES. 207 So. 24th St., 12-r., modern, \$50. 1111 So. 31st St., 12-r., modern, \$45.

THE HELMAN, 2603 St. Mary's; pleasant rooms; board optional. D. 6300. COOL rooms; board optional. Call H. 7184.

NEW West Hotel; reasonable. 1614 Doug. New West Hotel; reasonable. 1614 Doug.

NEW brick apartments, ready to move into; completely furnished, dishes and all.

HEATED APARTMENTS. 2211 Howard St., 2 rooms and bath; best and most convenient in Omaha.

NEARLY new flat, six rooms, reception hall, modern. 3122 Cass St. Benson 355 W.

HEATED APARTMENTS. 913 Forest Ave. New, south-east corner; third floor; \$47.50.

BOARDING HOUSE—VERY LOW COST. 2545 Doug. 12 rooms, all modern, in good condition.

THE HELEN. Very choice 4-room apartment. MAURIE J. BRIDGEMAN, Office 2255 Harney St., D. 6700.

VERY choice 4 or 5-room steam heated apartment on West Farnam St.

FURNISHED or unfurnished 7-r. east apartment, No. 6, Winona, 36th St. and Dewey Ave. Harney 1261.

STURTELL MODERN. 6-r., 240 Seward, newly decorated, \$30. 7-r., 209 Dewey Ave., choice brick dwelling.

3-r., 215 Nicholas, a choice detached dwelling in the heart of the West Farnam district.

PARTLY MODERN. 5-r., 210 S. 25th St., very close to 15. 5-r., 215 S. Nicholas, within easy walking distance.

CLARK, close in, bargain at \$18. 5-r., 215 S. Nicholas, within easy walking distance.

STURTELL MODERN. 3-r., 148 N. 7th, bargain at \$8. 3-r., 215 S. Nicholas, within easy walking distance.

NEW WEST FARMING BRICK. Nine rooms, w. w. corner, 324 and Dodge, brand new and extra fine with rent only on yearly lease.

COMMODOUS 6-room house, reception hall, bath, full basement, well located, and very prettily decorated.

FREE RENT until June 1: 5-room modern house, 201 N. 44th St., 5-room house, 128 N. 42d Ave.

2014 Chicago St., 3 rms., modern, only \$22.50. 1305 N. 25th St., 5 rms., modern, \$15.

THE STERLING APTS., 15th and St. Mary's Ave.; reduced rates for summer, 3 and 4 rooms; strictly modern; janitor service; close in; splendid location.

BENSON & MYERS CO., 624 Omaha National Bank Bldg. Phone Douglas 741.

HEATED APARTMENTS THE BOSWORTH. 2217 Howard St., 2 rooms and bath. Best and most convenient in Omaha.

4 AND 5 ROOM, 13 N. 16th, close in walking distance. 13 N. 16th, close in walking distance.

FOR RENT Brick House. Four bedrooms, bath and linen closet on second floor.

FREE RENTAL LIST. Complete rental list of houses, apartments and flats on file at our office no charge whatever.

FOR RENT Brick House. Four bedrooms, bath and linen closet on second floor.

2028 Capitol Ave., 7-r., modern, \$23.00. 2531 Spencer, 6-r., mod. ex., heat, \$18.00. 1517 N. 30th, newly decorated, \$17.00.

WE rent your houses free of charge. No Commission. Realty Company, 216-220 Paxton Bldg., Omaha.

SALESROOM or office room, second floor, 1204 Harney. Centrally located, well equipped for large purposes.

FOR RENT—Two modern store buildings, Choice location. 16th and Corby Sts.

FOR RENT—Grocery store with shelving, counters and icebox. 413 N. 23d St. Council Bluffs, Inquire 227 Ave. 2.

STORAGE ROOMS FOR RENT. In the PLATON, 17th and St. Mary's Ave. and the STERLING, 19th and St. Mary's Ave.

NEARLY all car lines pass this point. 70 S. 16th St., with heat and water furnished FREE.

REAL ESTATE. FARM & RANCH LANDS FOR SALE. Arkansas. 166-A RICH creek improved farm; 66 cultivation; oak timbered; 23 a. Seasonable Co., Winthrop, Ark.

FOR SALE—160 Acres. First quality farm land at \$50 per acre. Irrigation not required.

MINNESOTA. 166-A RICH creek improved farm; 66 cultivation; oak timbered; 23 a. Seasonable Co., Winthrop, Ark.

MINNESOTA. 166-A RICH creek improved farm; 66 cultivation; oak timbered; 23 a. Seasonable Co., Winthrop, Ark.

MINNESOTA. 166-A RICH creek improved farm; 66 cultivation; oak timbered; 23 a. Seasonable Co., Winthrop, Ark.

MINNESOTA. 166-A RICH creek improved farm; 66 cultivation; oak timbered; 23 a. Seasonable Co., Winthrop, Ark.

MINNESOTA. 166-A RICH creek improved farm; 66 cultivation; oak timbered; 23 a. Seasonable Co., Winthrop, Ark.

MINNESOTA. 166-A RICH creek improved farm; 66 cultivation; oak timbered; 23 a. Seasonable Co., Winthrop, Ark.

MINNESOTA. 166-A RICH creek improved farm; 66 cultivation; oak timbered; 23 a. Seasonable Co., Winthrop, Ark.

Must Sell. 30 acres near Long Pine, under cultivation. 100 bushels of alfalfa, 100 bushels of clover, 100 bushels of timothy.

It Will Be Corth Your While. To investigate this well improved 24-acre Douglas Co. farm. Only 10 miles from Omaha.

FOR RENT—Two modern store buildings, Choice location. 16th and Corby Sts.

FOR RENT—Grocery store with shelving, counters and icebox. 413 N. 23d St. Council Bluffs, Inquire 227 Ave. 2.

STORAGE ROOMS FOR RENT. In the PLATON, 17th and St. Mary's Ave. and the STERLING, 19th and St. Mary's Ave.

NEARLY all car lines pass this point. 70 S. 16th St., with heat and water furnished FREE.

REAL ESTATE. FARM & RANCH LANDS FOR SALE. Arkansas. 166-A RICH creek improved farm; 66 cultivation; oak timbered; 23 a. Seasonable Co., Winthrop, Ark.

FOR SALE—160 Acres. First quality farm land at \$50 per acre. Irrigation not required.

MINNESOTA. 166-A RICH creek improved farm; 66 cultivation; oak timbered; 23 a. Seasonable Co., Winthrop, Ark.

MINNESOTA. 166-A RICH creek improved farm; 66 cultivation; oak timbered; 23 a. Seasonable Co., Winthrop, Ark.

MINNESOTA. 166-A RICH creek improved farm; 66 cultivation; oak timbered; 23 a. Seasonable Co., Winthrop, Ark.

MINNESOTA. 166-A RICH creek improved farm; 66 cultivation; oak timbered; 23 a. Seasonable Co., Winthrop, Ark.

MINNESOTA. 166-A RICH creek improved farm; 66 cultivation; oak timbered; 23 a. Seasonable Co., Winthrop, Ark.

MINNESOTA. 166-A RICH creek improved farm; 66 cultivation; oak timbered; 23 a. Seasonable Co., Winthrop, Ark.

MINNESOTA. 166-A RICH creek improved farm; 66 cultivation; oak timbered; 23 a. Seasonable Co., Winthrop, Ark.

MINNESOTA. 166-A RICH creek improved farm; 66 cultivation; oak timbered; 23 a. Seasonable Co., Winthrop, Ark.



Suburban Home For Rent. A strictly modern, 5-room county home, with 1 1/2 or 2 acres of ground in city limits of Florence.

George & Company. 902 City Nat. Bk. Bldg. Phone D. 756.

We Can Rent Your Vacant Houses. Omaha's Rental Men. 616 Omaha Nat'l Bank.

HOUSES, ALL MODERN. 2904 Caldwell St., 5 rooms, \$30. 128 N. 42d Ave., 7-r., modern, \$18.

BEISSON HOMES. 2014 Chicago St., 3 rms., modern, only \$22.50. 1305 N. 25th St., 5 rms., modern, \$15.

THE STERLING APTS., 15th and St. Mary's Ave.; reduced rates for summer, 3 and 4 rooms; strictly modern; janitor service; close in; splendid location.

BENSON & MYERS CO., 624 Omaha National Bank Bldg. Phone Douglas 741.

HEATED APARTMENTS THE BOSWORTH. 2217 Howard St., 2 rooms and bath. Best and most convenient in Omaha.

FOR RENT Brick House. Four bedrooms, bath and linen closet on second floor.

FREE RENTAL LIST. Complete rental list of houses, apartments and flats on file at our office no charge whatever.

2028 Capitol Ave., 7-r., modern, \$23.00. 2531 Spencer, 6-r., mod. ex., heat, \$18.00. 1517 N. 30th, newly decorated, \$17.00.

WE rent your houses free of charge. No Commission. Realty Company, 216-220 Paxton Bldg., Omaha.

SALESROOM or office room, second floor, 1204 Harney. Centrally located, well equipped for large purposes.

FOR RENT—Two modern store buildings, Choice location. 16th and Corby Sts.

FOR RENT—Grocery store with shelving, counters and icebox. 413 N. 23d St. Council Bluffs, Inquire 227 Ave. 2.

STORAGE ROOMS FOR RENT. In the PLATON, 17th and St. Mary's Ave. and the STERLING, 19th and St. Mary's Ave.

NEARLY all car lines pass this point. 70 S. 16th St., with heat and water furnished FREE.

REAL ESTATE. FARM & RANCH LANDS FOR SALE. Arkansas. 166-A RICH creek improved farm; 66 cultivation; oak timbered; 23 a. Seasonable Co., Winthrop, Ark.

FOR SALE—160 Acres. First quality farm land at \$50 per acre. Irrigation not required.

MINNESOTA. 166-A RICH creek improved farm; 66 cultivation; oak timbered; 23 a. Seasonable Co., Winthrop, Ark.

MINNESOTA. 166-A RICH creek improved farm; 66 cultivation; oak timbered; 23 a. Seasonable Co., Winthrop, Ark.

Must Sell. 30 acres near Long Pine, under cultivation. 100 bushels of alfalfa, 100 bushels of clover, 100 bushels of timothy.

It Will Be Corth Your While. To investigate this well improved 24-acre Douglas Co. farm. Only 10 miles from Omaha.

FOR RENT—Two modern store buildings, Choice location. 16th and Corby Sts.

FOR RENT—Grocery store with shelving, counters and icebox. 413 N. 23d St. Council Bluffs, Inquire 227 Ave. 2.

STORAGE ROOMS FOR RENT. In the PLATON, 17th and St. Mary's Ave. and the STERLING, 19th and St. Mary's Ave.

NEARLY all car lines pass this point. 70 S. 16th St., with heat and water furnished FREE.

REAL ESTATE. FARM & RANCH LANDS FOR SALE. Arkansas. 166-A RICH creek improved farm; 66 cultivation; oak timbered; 23 a. Seasonable Co., Winthrop, Ark.

FOR SALE—160 Acres. First quality farm land at \$50 per acre. Irrigation not required.

MINNESOTA. 166-A RICH creek improved farm; 66 cultivation; oak timbered; 23 a. Seasonable Co., Winthrop, Ark.

MINNESOTA. 166-A RICH creek improved farm; 66 cultivation; oak timbered; 23 a. Seasonable Co., Winthrop, Ark.

MINNESOTA. 166-A RICH creek improved farm; 66 cultivation; oak timbered; 23 a. Seasonable Co., Winthrop, Ark.

MINNESOTA. 166-A RICH creek improved farm; 66 cultivation; oak timbered; 23 a. Seasonable Co., Winthrop, Ark.

MINNESOTA. 166-A RICH creek improved farm; 66 cultivation; oak timbered; 23 a. Seasonable Co., Winthrop, Ark.

MINNESOTA. 166-A RICH creek improved farm; 66 cultivation; oak timbered; 23 a. Seasonable Co., Winthrop, Ark.

MINNESOTA. 166-A RICH creek improved farm; 66 cultivation; oak timbered; 23 a. Seasonable Co., Winthrop, Ark.

MINNESOTA. 166-A RICH creek improved farm; 66 cultivation; oak timbered; 23 a. Seasonable Co., Winthrop, Ark.

Must Sell. 30 acres near Long Pine, under cultivation. 100 bushels of alfalfa, 100 bushels of clover, 100 bushels of timothy.

It Will Be Corth Your While. To investigate this well improved 24-acre Douglas Co. farm. Only 10 miles from Omaha.

FOR RENT—Two modern store buildings, Choice location. 16th and Corby Sts.

FOR RENT—Grocery store with shelving, counters and icebox. 413 N. 23d St. Council Bluffs, Inquire 227 Ave. 2.

STORAGE ROOMS FOR RENT. In the PLATON, 17th and St. Mary's Ave. and the STERLING, 19th and St. Mary's Ave.

NEARLY all car lines pass this point. 70 S. 16th St., with heat and water furnished FREE.

REAL ESTATE. FARM & RANCH LANDS FOR SALE. Arkansas. 166-A RICH creek improved farm; 66 cultivation; oak timbered; 23 a. Seasonable Co., Winthrop, Ark.

FOR SALE—160 Acres. First quality farm land at \$50 per acre. Irrigation not required.

MINNESOTA. 166-A RICH creek improved farm; 66 cultivation; oak timbered; 23 a. Seasonable Co., Winthrop, Ark.

MINNESOTA. 166-A RICH creek improved farm; 66 cultivation; oak timbered; 23 a. Seasonable Co., Winthrop, Ark.

MINNESOTA. 166-A RICH creek improved farm; 66 cultivation; oak timbered; 23 a. Seasonable Co., Winthrop, Ark.

MINNESOTA. 166-A RICH creek improved farm; 66 cultivation; oak timbered; 23 a. Seasonable Co., Winthrop, Ark.

MINNESOTA. 166-A RICH creek improved farm; 66 cultivation; oak timbered; 23 a. Seasonable Co., Winthrop, Ark.

MINNESOTA. 166-A RICH creek improved farm; 66 cultivation; oak timbered; 23 a. Seasonable Co., Winthrop, Ark.

MINNESOTA. 166-A RICH creek improved farm; 66 cultivation; oak timbered; 23 a. Seasonable Co., Winthrop, Ark.

MINNESOTA. 166-A RICH creek improved farm; 66 cultivation; oak timbered; 23 a. Seasonable Co., Winthrop, Ark.

Are You the Owner of Either of These? 3-5 room modern homes. 2-3 room modern homes.

American Security Company. 17th and Douglas Sts. Douglas 1013.

A Talk on Acreage. It is a generally acknowledged fact that the acreage of small acre farms, close to growing cities, has arrived.

Scott & Hill Co. Exclusive Agents. 306-7-8 McCaig Bldg. Tel. Doug. 1000-10.

5 Acres; Close-In. Good soil and smooth land, just outside the city limits, out southwest. This is near Grover street and just north of the Lane cut.

Harrison & Morton. 916 Omaha Nat'l Bk. Tel. D. 311.

120 Acres On Paved Road. Has good 7-room house, large barn, within 1/4 miles of Millard; all good rich land; elegantly located.

Scott & Hill Co. Exchange. Owners would consider good vacant lot for sale as part payment on the following properties, mostly new.

Scott & Hill Co. 14 Acres Close In. On the 63rd street, close to a mile north of Center St., we have a splendid 14 acre tract of land in blue grass soil.

Harrison & Morton. 916 Omaha Nat'l Bank Bldg. Doug. 311.

REAL ESTATE WANTED. REGISTER EVERY KIND OF PROPERTY OR BUSINESS FOR QUICK SALE OR EXCHANGE.

REAL ESTATE WANTED. REGISTER EVERY KIND OF PROPERTY OR BUSINESS FOR QUICK SALE OR EXCHANGE.

REAL ESTATE WANTED. REGISTER EVERY KIND OF PROPERTY OR BUSINESS FOR QUICK SALE OR EXCHANGE.

REAL ESTATE WANTED. REGISTER EVERY KIND OF PROPERTY OR BUSINESS FOR QUICK SALE OR EXCHANGE.

REAL ESTATE WANTED. REGISTER EVERY KIND OF PROPERTY OR BUSINESS FOR QUICK SALE OR EXCHANGE.

REAL ESTATE WANTED. REGISTER EVERY KIND OF PROPERTY OR BUSINESS FOR QUICK SALE OR EXCHANGE.