

Receipts From Merchants on This Page Are Valuable

Our Square Deal Methods

Have made us many friends. It is time you, too, were on our list. And got acquainted with the— Quality and Neatness of our work.

KIMBALL LAUNDRY CO. THE "WASHWORD" OF THE HOME

1507-09-11 Jackson Street. Phone Douglas 919.

Read These Drug Toilet Goods Prices Before You Buy Again

We carry in stock over 125,000 items in Drugs, Chemicals, Proprietary Medicines and Toilet Articles. We buy direct from manufacturers or importers in most instances, and thus can with great truth say that "We Save You Time and Money."

- 25c Allen's Foot Ease for... 14c
Bromo Seltzer 60c, 34c, 18c, 10c
25c Carter's Little Liver Pills 12c
35c Castoria for... 21c
50c Caldwell's Syrup Pepsin 29c
50c Carmel Powder... 29c
50c Canthox for... 29c
50c Doan's Kidney Pills for 34c
25c Espey's Fragrant Cream 14c
Fellows Syrup for 98c and... 64c
Horlick's Malted Milk, 82.70, 67c and... 34c
25c Hydrox Peroxide Cream 14c
Hind's Honey and Almond Cream for 79c and... 29c
Listerine for 58c, 29c, 14c and 9c
25c Lyon's Tooth Powder... 14c
25c Laxative Bromo Quinine 12c
50c Malvina Cream for... 29c
25c Mennen's Talcum (4 kinds) for... 12c
Mentholatum for 34c and... 14c
\$1.50 Oriental Cream, (Gourards) for... 98c
50c Pape's Diapensin for... 29c
\$1.00 Pinkham's Compound 59c
25c Packer's Tar Soap for... 14c
\$1.00 Pierce's Favorite Rx 64c
25c Pond's Vanishing Cream 14c
50c Syrup of Figs... 29c
50c Samuel's 3 P for... 29c
S. S. S. for \$1.00 and... 59c
25c 4711 White Soap for... 12c
25c Woodbury's Facial Soap 14c
\$1.00 Wine of Cardui for... 54c

SHERMAN & McCONNELL DRUG CO. 4 REXALL DRUG STORES

Of Course, It's the Mason & Hamlin

When you want the best piano, but LOOK HERE

our factory has just finished up in fine—"Just like new"—shape, the cases, tone and action of 20 pianos, including the following makes—

Three instruments at \$75, including Kimball and Hallett & Davis; 3 instruments at \$175, including Steger, Hospe and Richmond; 5 Player Pianos, including Emerson-Angelus at \$265; Weber Pianola at \$275; others to \$475.

You can own any one of the above on small weekly payments, and later turn it in at full price on a Mason & Hamlin.

A. HOSPE CO., 1513 Douglas Street. "14600 Days in the Piano Business."

Every Dollar Deposited to Open a New Account in the SAVINGS DEPARTMENT of THE MERCHANTS NATIONAL BANK

Counts 100 Votes in The Bee's Panama Contest Capital, \$500,000 Surplus, \$500,000 Undivided profits, \$240,000 Total deposits, \$7,000,000 THE MERCHANTS NATIONAL BANK 13th and Farnam Streets

LUTHER DRAKE, President FRANK I. HAMILTON, Vice President FRED P. HAMILTON, Cashier B. H. MEILE, Assistant Cashier C. B. DUGDALE, Assistant Cashier

NOTE: Votes will not be allowed for other than bona fide new savings accounts. Full number of votes will be allowed up to sixty days before close of contest when a limit of 10,000 will be placed on each new account.

Contestants' Standing

Table with 2 columns: Name and No. of Votes. Lists names like Ruth A. Pinney, Fay M. Watts, Mrs. Emma Barry, etc., with their respective vote counts.

Italy Will Spend \$400,000 for Show at the Exposition

Prince Scialoja of the Italian ministry has advised officials of the Panama-Pacific International exposition that Italy will participate in the exposition and will expend \$400,000 on an elaborate and comprehensive national exhibit.

Signor Nathan, the former mayor of the city of Rome, has accepted the appointment as Italian commissioner to the exposition and will leave for America soon to dedicate his country's site. The Italian Parliament recently appropriated \$400,000 for participation and interest, which has been keen in Italy over the exposition, immediately became an expression of enthusiasm. It is reported that steamer reservations are now being made by hundreds of prominent Italians for the year 1915 and that the attendance from that country will be exceptionally large.

FREIGHT TRAINS RUN INTO THE BUILDINGS

A sight that never fails to amaze visitors to the Panama-Pacific International exposition grounds is that of a train of freight cars speeding out of a newly finished exhibit palace. While all the entrances are large enough to admit locomotives and cars, the proportion of the immense buildings are such that the spectator does not realize this. Spurs of the exposition terminal railway system enter all the palaces and are now in daily use transporting lumber and materials for construction to the interior of the edifices. Later these tracks will be used in the installation of exhibits. When the exposition opens every track will be covered over and will remain invisible until the close of the celebration, when they will again be used.

Roller Conveyors to Handle Crowds on Sloping Track

One of the most unique and original methods of transportation ever devised for handling exposition crowds, and one which will effectually solve the problem of transporting the enormous crowds from the ferry building to the exposition grounds, is planned for San Francisco during the Panama-Pacific International exposition next year. The new method, known as the roller conveyor system, is similar to that which has been in use in factories for years, although this will be the first application of the mechanism to passenger traffic.

WONDERFUL EXHIBIT FROM SOUTH AMERICA

The Argentine Republic recently made an appropriation of \$1,300,000, gold, for an exhibit at the Panama-Pacific International exposition at San Francisco, in 1915, and has intimated that it will add to this amount later. The exhibit will illustrate methods by which Argentina has become an important factor in contributing to the food supply of the world, and it is expected it will be one of the most remarkable ever shown from a South American nation.

NOTICE TO CONTESTANTS

Next Tuesday we will publish the standing of all contestants who have turned in their nomination coupons or cash checks for votes in this contest. Get your receipts in by Saturday evening, so that your standing will appear in the list, thus letting your friends know that you are competing for a trip to the Panama exposition.

FREE NOMINATION COUPON GOOD FOR 1000 VOTES

Send or bring this coupon to the "Panama Contest Editor" of the Bee and you will receive 1000 votes in the Panama Contest. Only one coupon will be credited to a person.

Name ..... Address .....

How to Win a Free Trip to the Panama Exposition

Rules of Contest. 1-The Bee offers and will award three round-trip tickets and expenses to the Panama Exposition, the total cost of each trip to be \$200, as prizes to the three contestants having the greatest number of points at the close of the contest.

2-This contest open to everybody except employees of advertisers on this page and of The Bee. 3-The contest page will be published one day each week and will run for a period of one year. 4-Points will be figured on the basis of one point for each 1 cent shown on cash checks or receipts for purchases made from advertisers on this page. 5-Cash checks must be deposited at or mailed to "Panama Contest Editor" The Bee not later than thirty days from date of payment of same and receipts will be issued for them. Contest to close November 7, 1914. All cash tickets and receipts must be turned into The Bee office not later than 9 p. m. on closing day of contest, or if mailed, must be postmarked not later than that hour.

New Lamp Strong Competitor to Sun

The latest and most remarkable extension in the electric illumination is a new lamp producing from 1,500 to 2,000 candle power.

The Wolfe Electric company of this city has recently added to its stock the latest production of the Shelby National Quality Mazda lamp, namely, 750 watt and 1,000 watt nitrogen filled Shelby Mazda. This lamp has nearly twice the efficiency of the regular Shelby Mazda, and for this reason is by far the most economical artificial light where a large unit is desired.

A wonderful installation of 750-watt National Mazda lamps is now in operation on Ontario street, Cleveland. Another considerable field for the new lamp is for a display advertising in front of large stores or on top of high buildings, etc. For example, a 750-watt National Mazda lamp has been on display for some time at the top of the flagpole of the Hotel Belmont, New York City, where it has excited a great deal of curiosity.

For the commercial photographer this lamp is the only really satisfactory light for printing purposes, as the brilliancy of this lamp is almost equal to sunlight.

Panama Exposition Notes.

A bill appropriating \$150,000 gold for the purpose of exhibiting the Chilean pavilion at the Panama-Pacific International exposition, has passed both houses of the Chilean congress.

Vahan Cardashian, Imperial Ottoman adjutant, high commissioner and executive director to the Panama-Pacific International exposition from Turkey, visited San Francisco recently for the purpose of selecting and formally dedicating the site for the Turkish pavilion, which will cost \$500,000. There will be shown a lavish display of the products, manufactures, and art of the Ottoman empire.

Since Lincoln Beachey started indoor aviation by his sensational flight in the gigantic palace of machinery, it has become a common sport at the Panama-Pacific International exposition. Beachey has not repeated the flight, but others have successfully attempted to break his record for an indoor endurance flight. A flock of grey linets has invaded the huge palace, and built nests among the rafters, and incidentally smashed Beachey's record for indoor aviation to smithereens.

An exhibit by which it is hoped to influence immigration to Canada is planned for the Canadian pavilion at the Panama-Pacific International exposition, now being constructed under direction of Colonel William Hutchinson, commissioner general from the Dominion of Canada. This play, says Colonel Hutchinson, is merely to offset the flow of Canadians to the United States, and is not in a spirit of rivalry. Canada has appropriated \$800,000 to be expended upon its exhibit.

Rene Quinton, head of the French Aerial league, cables congratulations to Arnold Kruckman, manager of the bureau of aeronautics of the French government, in international exposition, upon his initiative in inaugurating the great around-the-world aeroplane contest in May, 1913. Quinton, who has been organizer of many European cross-country flights, suggests an alternate route by way of Europe, Africa, Asia and America, via London, Paris, Berlin, Vienna, Constantinople, Cairo, Bagdad, Calcutta, Saigon, Peking, Behring Straits and San Francisco, with a time limit for this route of 120 days.

Every inch of the two miles of bay shore skirting the grounds of Panama-Pacific exposition has been secured by exposition builders in a vain search for isabella, the wild duck whose workmen had adopted as their mascot. Isabella appeared suddenly a few months ago in the center of the little pool in the space which is to be the sunken garden of the court, and finding things to her liking, and the workmen generous of bits of food, remained undisturbed by the sound of hammer and saw. Now she has disappeared as mysteriously as she came, driven away, it is believed by the increasing flock of sea-gulls which haunt the exposition shores.



Benj. Franklin Said-- "Wealth is not his that has it but his that enjoys it." Poor Richard's Almanac.

You can protect the health of your family and insure comfort in the home by using an Electric Radiator. In the bath room and nursery it protects the little ones from chills and draughts and aids in keeping them well and strong.

The Electric Radiator for Cool Mornings and Nights

Chill mornings and cool evenings at this time of year demand some quick, convenient method of heating. It is an unnecessary expense to operate the furnace for a few hours each day. The Electric Radiator heats quickly; can be moved readily from one room to another and is safe and convenient.

Omaha Electric Light & Power Company

WE CAN SELL RIGHT

Diamonds Watches Jewelry Silverware Crystal Cut Glass

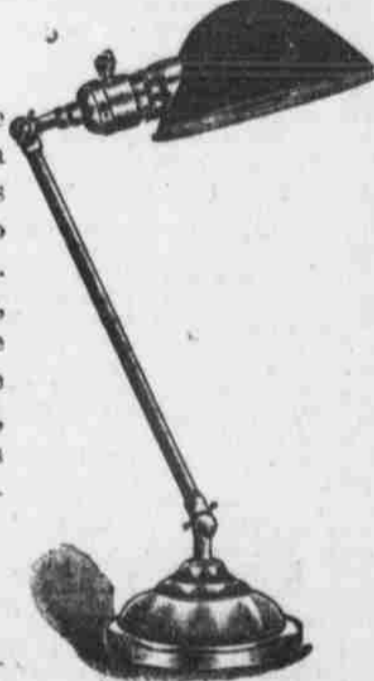
BECAUSE WE BUY RIGHT

OVER 100 BRANCH STORES and More Added Every Week Our Watch Repair Dept. Largest in State; Experts Only Employed



Take a Look

at these lamps and then notice the price at which we are offering them to you. It is hardly necessary for us to say that you cannot find a lamp of better quality for the money. This lamp is adjustable to any angle, can be used on the piano, on the desk, on the library table, on the sewing machine, on the work bench, etc. It is finished in Brush Brass with parabola shade, cord and attachment plug.



You Will Want One but you must come soon—our supply is limited, so hurry or you will be too late. \$2.25

The Electric Shop

WOLFE ELECTRIC CO. Tyler 1414 1810 Farnam Street Wire for Us and We Will Wire for You.

IF You Are Not Attired Properly This Spring It's NOT Dresher's Fault

Dreshers have given out the word repeatedly: they can take your LAST year's suit or dress and put THIS year's style to it! This makes about the 48th advertisement to this effect; so it's YOUR fault if you go SHABBY this Spring.

Dresher Brothers Dry Cleaners, Dyers, Hatters and Tailors

\$57,000 Plant at 2211-2213 Farnam Street

Advertisement for Courtmey's Grow Burbank Varieties In Your Garden. Includes text about seeds, a circular logo for Luther Burbank, and contact information for Courtmey's.