

# Commercial Motor Trucks

HE SELLS THE PACKARD CARS AND TRUCKS.



H. F. ORR,  
Orr Motor Sales Company.

## MOTOR TRUCK AS TIME SAVER

Gets Over the Ground and Makes Delivery Much Quicker.

## GREAT FOR ALL SHORT HAULS

Can Make Towns for Considerable Distance in Quicker Time and at Less Expense Than by Freight.

In times of rushing business when the railroads have more tonnage than they are able to move promptly, the use of the high grade heavy motor truck for short haul work is coming to be an important factor which tends to facilitate the quicker movement of freight.

Short haul business is not much sought by the railroads at any time and when the through business is very heavy, as it was last fall when the country experienced a great shortage of freight cars, the railroad managers welcome the relief afforded by the motor truck.

The rate charged by railroads for short haul business while higher per ton-mile than on through traffic, is scarcely sufficient to make up for the space occupied in stations by the goods and the labor of handling. When long haul business is available it is much more profitable. That is why the development of interurban truck business is good for the railroads.

There are a great many reasons why it is good for the truck owner. If a shipment is to be made to a town twenty miles away, the goods may be put on the truck in the morning, the run to the destination made in from two to two and a half hours, and the goods unloaded at the purchaser's home or place of business.

In the case of railroad shipment, the goods are loaded onto a wagon, driven to a station, unloaded into the freight shed, loaded into the car, moved that night, perhaps, to the town which is the destination, unloaded into the freight shed, loaded into a wagon, and unloaded at the purchaser's house.

The difference in efficiency between the two methods is so great that a mere statement of the case proves it. The truck does the work in a quarter of the time and at less expense.

For all these reasons many large business houses have adopted trucks exclusively for their short haul freight work. In Cleveland a large retail dealer in furniture and house furnishings, makes all its deliveries to nearby Ohio towns with a Peerless truck.

In Chicago a dealer in leather goods ships all goods to a distance of fifty miles by a Peerless truck. In Fall River, Mass., a firm of draymen carry freight regularly at night to Providence and other nearby New England towns in a Peerless truck. Because of the density of population and the short distance between cities, New England has developed this branch of motor trucking further than almost any other state in the country.

## Light Truck Shows Its Worth When Put to Severest Test

"An ounce of demonstration is worth a ton of talk," is the slogan of the Freeland Auto company, when boosting their Mason light trucks. And all who witness the enviable performance of the two light Mason trucks, only guaranteed to carry 1,000 pounds, but carrying eleven people who average 150 pounds apiece, chugging up the steep Hamilton street hill on high last Tuesday, will agree that the slogan is worth while. The two trucks carried a portion of the band of the Chicago Turvoten delegates who stopped in Omaha Tuesday and were given the long auto ride to all parts of the city.

Nothing that any Mason truck or any other make had done before gave such a clear idea of the efficiency and durability of light delivery cars. The little Mason machines rumbled over paved streets, smooth boulevards, heavy dirt roads, still in had condition as the result of the rain the night before, and up steep hills without the slightest difficulty or hesitation.

## WATER COOLED TRUCK WINS BY RECORDS MADE

"The International motor truck has made its way by the way it is made," said W. J. Pilant of the International Harvester company.

"We have just received three carloads of these motor delivery trucks and will have more coming. We have considerably over 100 of these trucks running in Omaha, but we are speaking now of our new water cooled truck, which is proving to be very popular for a light delivery truck. This new truck has many improvements and is a type that is now proving to be so successful. We are now selling many of these trucks in country towns for delivery purposes. They are fitted with most any kind of a body that is desired, and can be used for various purposes. This truck is especially adapted for sand and mud, and will go anywhere where a team and wagon can go. This is the car that won the cup in the Washington Post endurance truck run.

GENERAL AGENT OF INTERNATIONAL HARVESTER CO.



W. J. PILANT

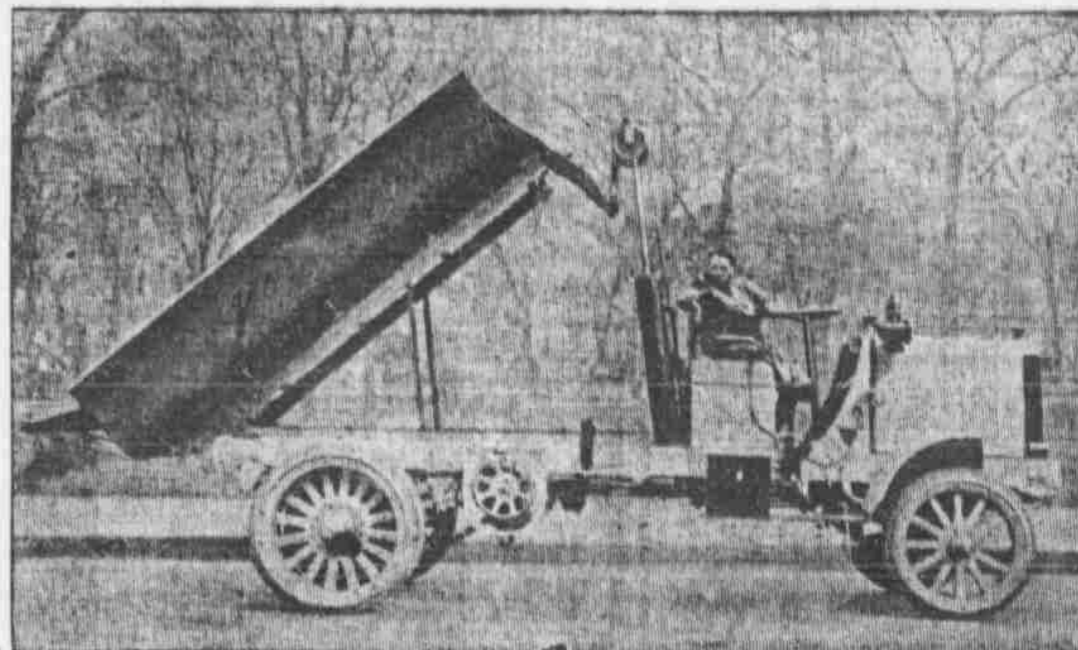
This was a run of 228 miles over the mountains in Pennsylvania and New Jersey, and the International motor truck came out with a perfect road score, perfect brake, gear and clutch test. They carried a load of over 1,000 pounds and in the 228 miles only used three pints of lubricant. Many sales have been attributed to the result of this driving test. This new car has many improvements which makes it very durable, easy to operate and very economical in fuel and oil and is the most economical truck in the world today, and is especially adapted for light motor truck business, grocery delivery, cream routes, truck gardeners, farm use; in fact, for any purpose where a truck from 1,200 to 1,800 pounds capacity is wanted. They are world beaters."

## Closed Car Makes Time.

The Studebaker "36" Sedan, in which J. W. Carlton is making a transcontinental trip, starting from Los Angeles, is already at Kansas City and, with virtually all the rough road of its trip behind, is charging on New York. This is the first closed car in which such a run has ever been attempted. With passengers and baggage on board, the outfit weighs 4,400 pounds.

# Packard MOTOR CARS AND TRUCKS

Packard Hydraulic Hoist and Dump Body



Body can be raised or lowered while truck is in motion or stationary.

Operates on hydraulic principle, using an ordinary grade of gas engine oil.

Maximum elevation of body 45 degrees.

Time required to elevate body 20 seconds.

Time required to lower body 15 seconds.

Operated by a Small Controlling Lever on Driver's Seat

## Orr Motor Sales Company

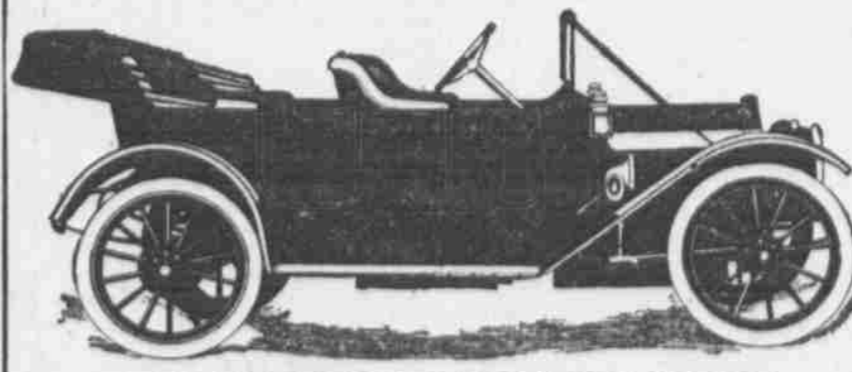
Twenty-fourth and Farnam Streets

## How We Test Out Our Little Mason Trucks



Specifications MASON MODEL 12 Two Cylinders  
 ENGINE—Double cylinder, horizontal opposed, water cooled, 5-inch 6x5 bore, 5-inch stroke, 24-25 h. p.  
 TRANSMISSION—All spur gear, planetary type, two speeds forward and one reverse; all gears run in oil bath enclosed in oil tight case.  
 DRIVE—Extra heavy roller Whitney chain, 5/8-inch wide, 1-inch pitch.  
 BEARINGS—Timken roller bearings front and rear axle.  
 TIRES—32x3 1/2-inch Goodrich Q. D.  
 SPRINGS—Full elliptic, 38 inches long in rear, and semi-elliptic, 42 inches long, 2 inches wide in front. Rubber bumpers rear and front.  
 COLOR—Warm wine; gear same color.  
 STEERING—Solid maple wheel; gear our own design, positive and irreversible.  
 CONTROL—Lever at right of driver for low gear and direct drive and brake, pedals for reverse and brake. Throttle and spark within thumb reach on top of steering wheel.  
 WHEEL BASE—Ninety-six inches.  
 TREAD—Fifty-six inches.  
 LUBRICATION—Special force feed, automatic oiler, increasing oil as speed increases.  
 CLEARANCE—10 1/2 inches.  
 IGNITION—Splitdorf Magneto and one set of batteries and coil on dash. No vibrators.  
 CARBURETOR—Special automatic; self-compensating for all speeds.  
 COOLING—Extra large radiator; our own design, insuring perfect cooling.  
 CIRCULATION—Water circulation made positive by direct connected rotary pump on end of engine shaft. No gears or chains.  
 BRAKES—Hub expanding, 2 1/4-inches wide, 12 1/2-inches diameter.  
 EQUIPMENT—Two side oil lamps, two acetylene lens mirror gas lamps with Presto generator; horn and full set of tools. Wind shield.  
 WEIGHT—1,850 pounds.  
 PRICE—Model 12—Delivery—\$800.00, with either closed or open body, with canvas top. Optional, pneumatic or solid tires.  
 Specifications for Model 12-13 same as Model 12, except that it has a larger body and capacity of 1,500 pounds, with open body with removable flare sides and removable canvas top. Prestolite tank, glass front, and 33x4-inch Goodrich Q. D. special tires. Price \$1,000.

## THE MASON LEADS THEM ALL



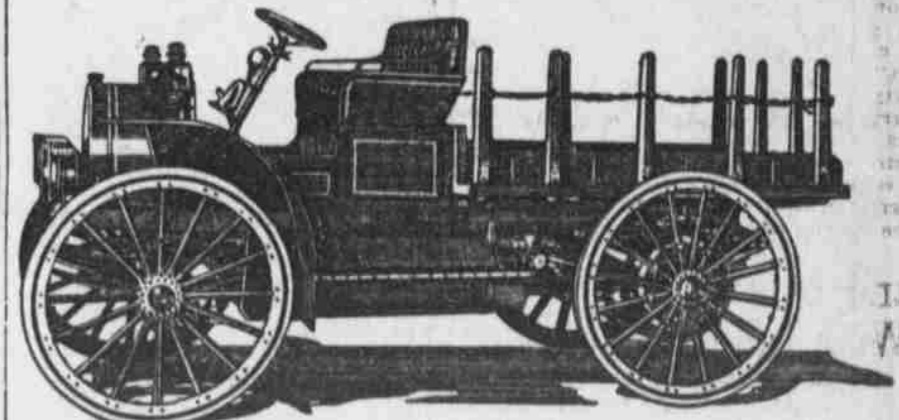
MASON MODEL K, 5-PASSENGER TOURING CAR, \$1,200.

We Also Handle the Midland Touring Cars in Both Four and Six Cylinders

## Freeland Auto Co.

1113 Farnam Street Omaha, Neb.

## International Motor Trucks



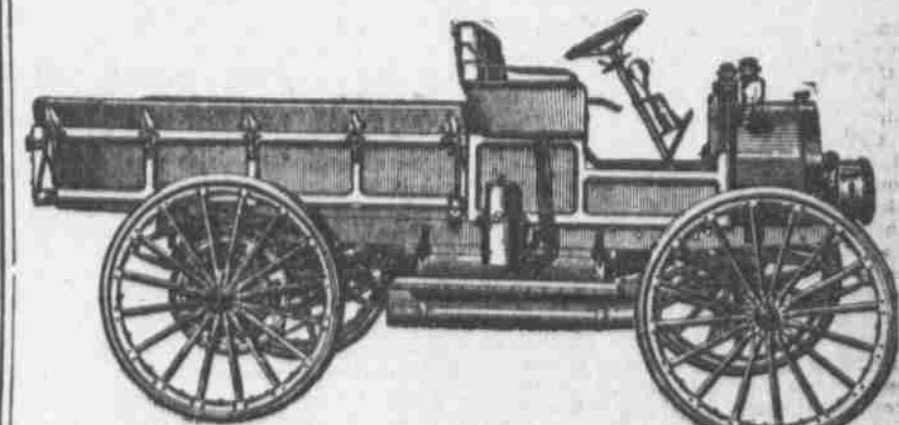
Equipped with Special Body "M-1"

This body is interchangeable with the rear part of the panel express body on Model "M-A" and "M-W." The platform is 76 inches long from back of seat and 42 inches wide (inside dimensions.)

**Distinctive International Features**  
 Simple One-Lever Control  
 Double System of Ignition  
 Constant Pressure Feed System of Lubrication

The International Motor Truck is designed and built for commercial work.

If it is a question of dollars and cents don't hesitate. For light hauling the International Motor Truck has the advantage from the standpoint of economy as well as speed. Remember every saving in your operating cost is just so much added to your profit.

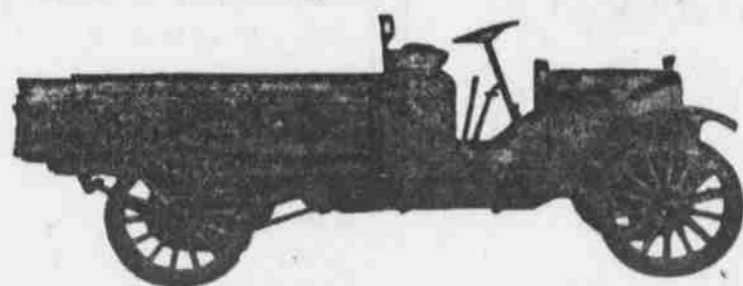


International Commercial Truck Equipped with Regular Body

## International Harvester Company of America

801-7 Capitol Ave. Omaha, Nebraska

SAVE HALF YOUR HAULING EXPENSE **Dart** INCREASE YOUR BANK ACCOUNT



## PRICES CHASSIS, F. O. B. FACTORY

Model E D 2-cylinder, 1,000 lb. capacity.....\$750  
 Model B 4-cylinder, 1,500 to 2,000 lbs. capacity.....\$1100  
 Model C 4-cylinder, 3,000 to 4,000 lbs. capacity.....\$1775

Compare the Dart Truck and the Dart Prices with others which are offered from \$300 to \$1,000 higher.

**THIS IS A REAL SERVICE TRUCK ALWAYS ON THE JOB**

Continental Motor; Brown Lipe or Warner Transmission; Sheldon Axles, Springs and Frame.

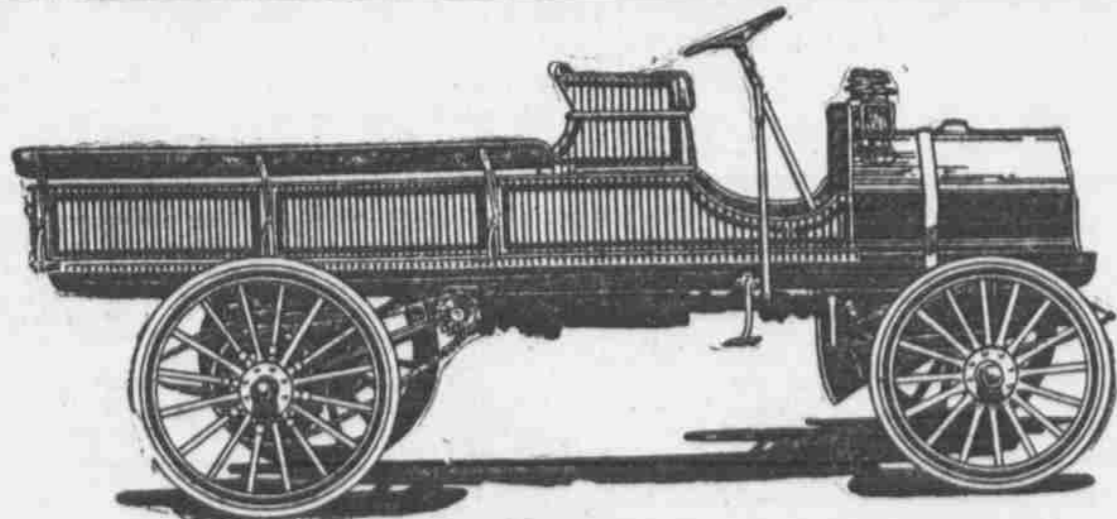
No Experiment—Absolutely Standard

R. J. LONSFIELD, Mgr. Truck Department.

## McIntyre Automobile Co.

2208 Farnam Street, Omaha.

Western Agents for Dart Motor Manufacturing Company.



The Truck for Every Need Designed for Your Business

500 Lbs. to 4,000 Lbs. \$500.00 to \$2,000.00

CALL ON US FOR DEMONSTRATION

Phone Harney 409

**Drummond** MOTOR CO.

26th and Farnam