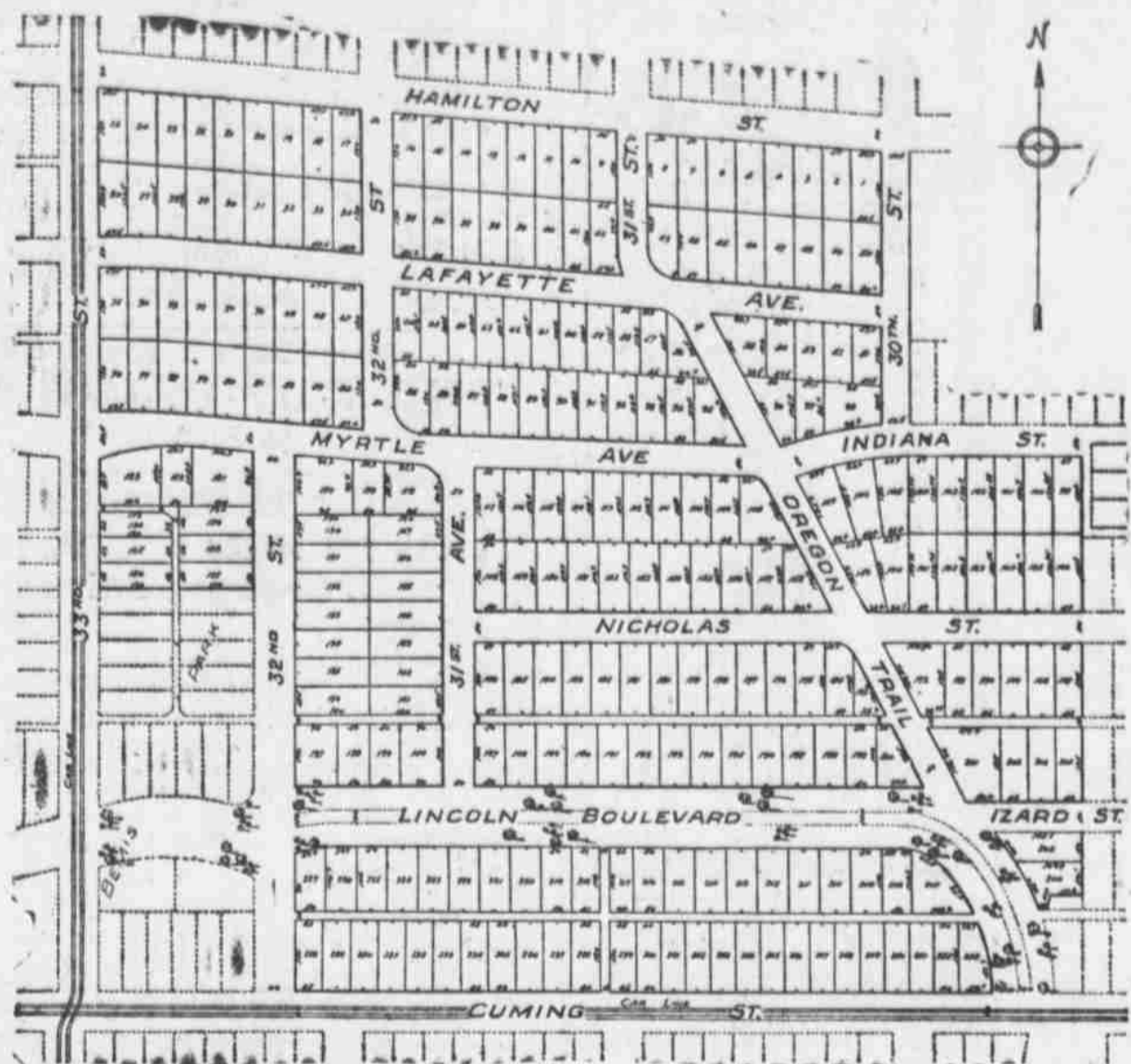


REAL ESTATE CITY PROPERTY FOR SALE. REAL ESTATE CITY PROPERTY FOR SALE. REAL ESTATE CITY PROPERTY FOR SALE. REAL ESTATE CITY PROPERTY FOR SALE.

Acquire a Part of the Earth



MONTCLAIR

Foxes have holes, birds of the air have nests, the Indian his wigwam, but not more than one civilized man in four has a habitation he can call his own. If you have not already started to acquire some part of the earth, here is your opportunity. On Saturday, June 27th, at 2:00 P. M. we are going to offer for sale lots in Montclair—Thirty-third street, Cuming to Hamilton. Salesman will be on the ground Friday, 4:00 P. M. until dark to show the property.

REAL ESTATE CITY PROPERTY FOR SALE. REAL ESTATE CITY PROPERTY FOR SALE.

ELEANOR PLACE

That beautiful, level tract lying north of pretty Prairie Park addition, known as the McKenzie property. Between 24th and 27th Street, facing Larimore Ave.

Advance Sale Begins Saturday, June 27th, 2 P. M.

Big lots 42x135 with alley and 40-ft. street. \$700 choice of inside lots—\$700. Includes Water, Sewer, Cement Walks. Easy Terms—\$10.00 Cash, \$10.00 a Month. Building Restrictions Protect Purchasers. Served by direct car lines—North Twenty-fourth, Florence, Forest Lawn or Ames Ave cars. Biggest Bargain in vicinity of 24th and Ames. Lots within two blocks selling for \$1,500. Don't let the other fellow get YOUR LOT. Hand a Salesman a \$10 bill and get receipt.

ARTHUR CHASE, Sole Agent

548 Om. Nat'l Bk. Bldg. Douglas 680 and Webster 2579.

RAILWAY TIME CARD

Table with columns for Chicago, Rock Island & Pacific, and Burlington Station. Lists various train routes and departure/arrival times.

WESTERN STREET STATION—Tenth and

Table with columns for Missouri Pacific and Union Pacific. Lists train routes and departure/arrival times.

WESTERN STREET STATION—Tenth and

Table with columns for Missouri Pacific and Union Pacific. Lists train routes and departure/arrival times.

Must Be Sold

6x12 near corner 25th and California, stables, worth \$10,000, \$7,500 will buy it now.

Fruit Acres

This is one of the finest fruit farms in Douglas county. Fruit of all varieties and all trees in bearing.

Calkins & Co.

Douglas 1703. 1313 City Nat'l.

RAILWAY TIME CARD

Table with columns for Union Station—Tenth & Mason, and Missouri Pacific. Lists train routes and departure/arrival times.

Chicago & North Western

Table with columns for Chicago & North Western. Lists train routes and departure/arrival times.

Chicago & Great Western

Table with columns for Chicago & Great Western. Lists train routes and departure/arrival times.

Chicago & St. Paul

Table with columns for Chicago & St. Paul. Lists train routes and departure/arrival times.

Chicago & Rock Island

Table with columns for Chicago & Rock Island. Lists train routes and departure/arrival times.

Chicago & Missouri Pacific

Table with columns for Chicago & Missouri Pacific. Lists train routes and departure/arrival times.

Chicago & Illinois Central

Table with columns for Chicago & Illinois Central. Lists train routes and departure/arrival times.

BOATMEN MAY BE ARRESTED

Wholesale Gathering in May Result at Inspection of Crafts. REGULATIONS ARE VIOLATED Government's Rules Regarding Equipment Changed This Year and Many Are Disregarding New Navigation Laws.

The next inspection of motor and sailboats on lakes in Nebraska and western Iowa lakes by Cadet Taylor, collector of customs for the port of Omaha, may result in wholesale arrests for violations of government regulations providing for the equipment of such water craft. While the regulations of the government concerning the equipment of launches, motorboats and sailboats have not been changed this season the enforcement of the statute will be more rigid than in former years.

Royal Arcanumites Have an Evening Out

Over 400 members and friends of the Union Pacific council Royal Arcanum enjoyed their annual reunion and outing last evening at Happy Hollow club. Three reels of interesting motion pictures were displayed during the evening.

Fontenelle Steel All Up in Two Weeks

Steel work on the new Fontenelle hotel building will be finished within two weeks, according to the contractors. It is now past the twelfth story and is being pushed to completion as rapidly as possible.

SEARCH FOR BOY'S BODY IN MISSOURI FRUITLESS

Search by the police with grappling hooks for the body of Charles Anderson, aged 18, 222 Cedar street, who was drowned in the Missouri river at the foot of Dorcas street, was abandoned at dusk Thursday night.

NEW LIBRARY BOARD IS NAMED FOR BENSON

A board of nine citizens has been named to have charge of the library to be established by the Omaha library board in the village of Benson. This library will be furnished with several hundred selected books and will be run on the same principles as the Omaha library.

MEETING HELD TO ORGANIZE FLORENCE SUFFRAGE SOCIETY

A preliminary meeting for the purpose of organizing a woman suffrage society in Florence was held Thursday afternoon at the home of Mrs. M. Mickeler, 296 Main street.

OFFICERS ARE ELECTED BY WELLESLEY CLUB

The Wellesley club held its annual meeting for election of officers at the home of Mrs. James Charles Dahman. The following officers for the coming year were chosen:

CHIEF DUNN RETURNS FROM THE CONVENTION

Chief of Police Henry W. Dunn has returned from Grand Rapids, where he attended the meeting of the National Association of Police Chiefs, which struck from the list of honorary members the name of the detective, William J. Burns.

BANQUET FOR MISS M' HUGH AT HAPPY HOLLOW TONIGHT

Miss Kate A. McHugh, retiring principal of Central High school and a member of its faculty since 1903, will be tendered a tribute by several hundred graduates this evening in the form of a dinner at Happy Hollow club.

FIRECRACKERS ARE THE CAUSE OF A RUNAWAY

A team of mules, frightened by a small boy's firecracker, ran away at Fifteenth and Howard streets and several persons narrowly escaped serious injury.

Brandeis Employes Vacation With Pay

Mr. George Brandeis, manager of the big Brandeis store left yesterday to be absent two weeks, the time to be divided between Chicago and New York. Before his departure a new rule was promulgated by which all employes in the service of J. L. Brandeis & Sons for more than a year are to have a week's vacation with full pay.

VISITING TICKET AGENTS TAKE TRIP OVER TOWN

Western Iowa and South Dakota ticket agents enroute from the trip to the Pacific coast reached Omaha and spent several hours in the city prior to leaving for their homes during the afternoon. While here they visited the Union Pacific headquarters and took an automobile ride over the boulevards and through the parks.

THERMOMETER SOARS IN THE STATE THURSDAY

Holdrege and Culbertson again carried the distinction of being the hottest places in Nebraska Thursday, when temperatures of 101 were recorded at each place by government instruments.

Ak-Sar-Ben After Commercial Club for Membership

The Ak-Sar-Ben office force, the hustling committee, and even the United States mail system, have been called into service to bring out a crowd to the downtown night, which is Commercial club Monday night.

LOCAL EAGLES TO GO TO ST. JOSEPH CLAMBAKE

A special carload of Omaha and South Omaha Eagles and prize ring enthusiasts will leave Omaha Saturday night over the Burlington for St. Joseph, where the Eagles of that city will hold their big annual clam-bake Sunday afternoon.

FORT FINDS BIG AD CLUB CONVENTION INTERESTING

Passenger Traffic Manager Fort, of the Union Pacific is back from Toronto, where he attended the annual meeting of the Ad clubs of the United States and delivered one of the principal addresses.

Culls from the Wire

Dr. Charles Van Hise, president of the University of Wisconsin, criticized pending anti-trust legislation yesterday in an address before the National Association of Credit Men in convention here.

HOWELL CANNOT COLLECT DOLLAR FOR WAIVING RIGHT

No more will R. Beecher Howell compel his valued patrons to pay \$1 for a permit to secure service from a private main and force them to waive the right of protest against paying for a new main, according to a decision of District Judge Sutton.

M'KINLEY LODGE HAS ELECTON OF OFFICERS

With a large membership present, the William McKinley lodge, No. 521, Independent Order of B'nai B'rith, for the third time elected S. J. Leon as its president at its club rooms in the Metropolitan hall.

Why Pay Rent?

Write, call, phone or send for our list of easy payment houses. Priced from \$500 to \$2,500. Payments of \$100 cash and \$10 per month. Now is the time to get away from the rent habit.

Creigh, Sons & Co.

106 McCAGUE BLDG. DOUG. 5622. IDEAL HOME 3555 California St. Living room, sun room, dining room, kitchen, first floor, four bedrooms and bath second floor.

ARMSTRONG-WALSH CO. 1538-1536-1534-1532 State Bank Bldg. Why Pay Rent? Write, call, phone or send for our list of easy payment houses.

REAL ESTATE FARM & RANCH LANDS FOR SALE.

Nebraska. \$15-25 PER ACRE-\$15. 50-acre improved western Nebraska stock ranch, easily worth \$150 per acre but owner must raise money at once.

FOR SALE OR EXCHANGE—R. E.

60-ACRE irrigated farm 1 1/2 miles from county seat, raises alfalfa, fruit, stocks, dairying and hogs. Must sell or will trade for stock of merchandise or other property in city or country.

REAL ESTATE LOANS

\$100 to \$10,000 made promptly. F. D. Wead, Wead Bldg., 15th and Farnam. WANTED—City loans and warrants.

George & Company

Brand new 5-room bungalow, oak finish, with oak floors, bookcases, window seat, plate rail and paneled walls.

Down Town Investment

Full lot 6x12 1/2 feet, 1/2 blocks from post-office, close to new Fontenelle hotel, income, \$2,000. Price, \$2,500.

J. H. Dumont & Co.

64 Farnam St. Phone Doug 520-2. REAL ESTATE CITY PROPERTY FOR SALE.

We Will Build to Order Bungalows and Cottages—

\$150 to \$200 Down Balance Like Rent. We have eight nice lots near 14th and Binney, on which we will build to order, four, five or six room cottages and bungalows.

Hiatt-Fairfield Co.

Douglas 88. 220 Omaha Nat. Bank Bldg. Happy Hollow and Dundee Lots Easy Terms

One Tenth Cash and One Per Cent of the Purchase Price Per Month

Building restrictions on all lots. Send for plat and literature. Five blocks on Nicholas St., \$100 cash and \$10 per month.

George & Company

Doug. 716. 92 City Nat. Bk. Bldg. Boulevard Park Home

Modern Benson Home, \$875 Cash

Balance \$50 and interest monthly; 3 1/2 foot east front lots, highest part of town. Two blocks south of car, house on center lot.

New 8-Room Modern, \$3,750

Corner lot, near 22d and Sprague, up-to-date and modern in every particular, four bedrooms. Owner leaving Omaha.

Armstrong-Walsh Co.

Tyler 1538. 208-19-12-14 State Bank Bldg. Why Pay Rent? Write, call, phone or send for our list of easy payment houses.

Want a Home Bargain?

Here's a good one at sacrifice price. 3-r. modern house, choice corner lot, both streets paved, finest location, near Love Ave. and Izard. Lot large enough for another house; must be sold at once.

McKittrick Real Estate Co.

316 Range Bldg. 15th and Har. Doug. 1422. Modern Benson Home, \$875 Cash

Why Pay Rent?

Write, call, phone or send for our list of easy payment houses. Priced from \$500 to \$2,500. Payments of \$100 cash and \$10 per month.

Creigh, Sons & Co.

106 McCAGUE BLDG. DOUG. 5622. IDEAL HOME 3555 California St.

ARMSTRONG-WALSH CO.

Tyler 1538. 208-19-12-14 State Bank Bldg. Why Pay Rent? Write, call, phone or send for our list of easy payment houses.

Why Pay Rent?

Write, call, phone or send for our list of easy payment houses. Priced from \$500 to \$2,500. Payments of \$100 cash and \$10 per month.

Creigh, Sons & Co.

106 McCAGUE BLDG. DOUG. 5622. IDEAL HOME 3555 California St.

MUST BE SOLD

6x12 near corner 25th and California, stables, worth \$10,000, \$7,500 will buy it now.

Fruit Acres

This is one of the finest fruit farms in Douglas county. Fruit of all varieties and all trees in bearing.

Calkins & Co.

Douglas 1703. 1313 City Nat'l.

RAILWAY TIME CARD

Table with columns for Union Station—Tenth & Mason, and Missouri Pacific. Lists train routes and departure/arrival times.

Chicago & North Western

Table with columns for Chicago & North Western. Lists train routes and departure/arrival times.

Chicago & Great Western

Table with columns for Chicago & Great Western. Lists train routes and departure/arrival times.

Chicago & St. Paul